

# CERTIFICATE OF LOCATION OF GOVERNMENT CORNER

County of Anoka

State of Minnesota

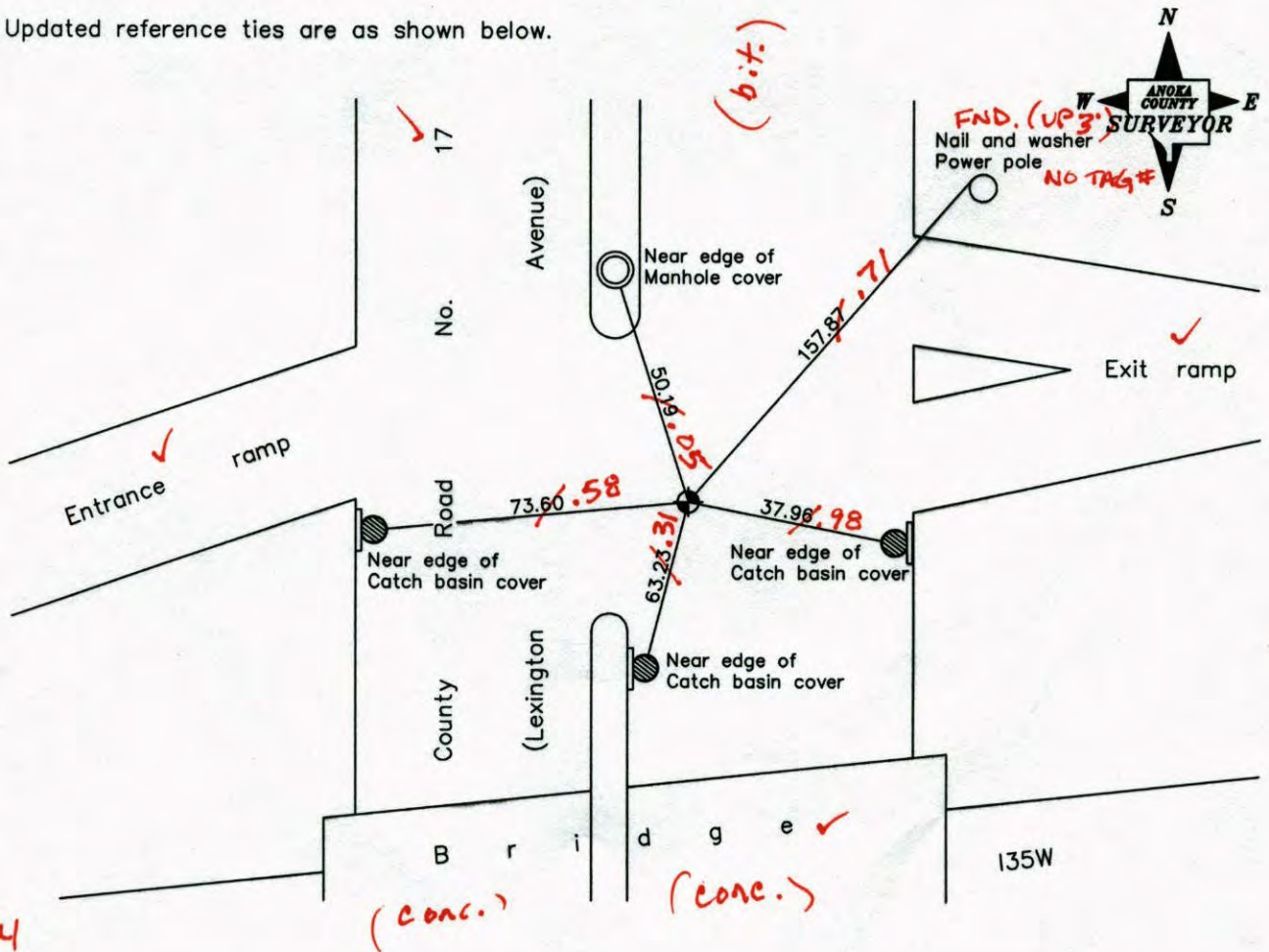
West 1/4 Corner of Sec. 24 Township 31 Range 23

On the 21st day of October, 1968, the described corner was evidenced by area resurvey

and to perpetuate the location of said ~~corner~~, at the exact location thereof, a permanent marker was placed consisting of a cast iron monument

AND on the \_\_\_ day of \_\_\_\_\_, \_\_\_\_\_, said permanent marker was \_\_\_\_\_

Updated reference ties are as shown below.



5-21-14  
BK-SS  
TOTAL  
STA.

Revised date
6/26/95
6/02/98
10/15/98

N.A.D. 1983 Coordinates (1996 Adjustment)	
County Project Coordinates	
Northing	<u>145615.3480</u>
Easting	<u>526677.7228</u>
Date	<u>10/15/98</u>

I hereby certify that this United States public land survey monument record is correct and complete to the best of my knowledge and belief.

\_\_\_\_\_, Anoka County Surveyor

Minnesota License Number \_\_\_\_\_

# CERTIFICATE OF LOCATION OF GOVERNMENT CORNER

County of Anoka

State of Minnesota

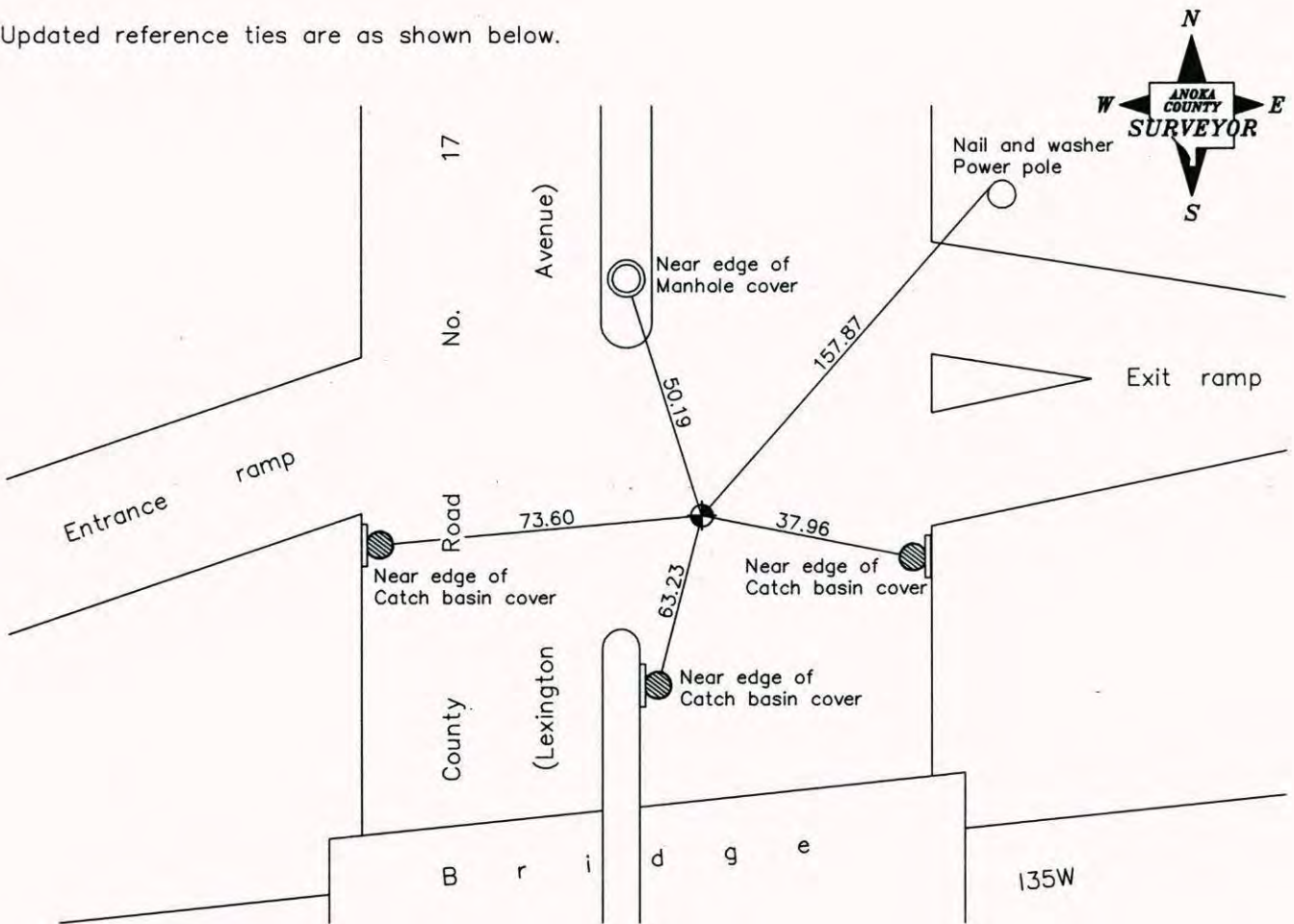
West 1/4 Corner of Sec. 24 Township 31 Range 23

On the 21st day of October, 1968, the described corner was evidenced by area resurvey

and to perpetuate the location of said corner, at the exact location thereof, a permanent marker was placed consisting of a cast iron monument

AND on the \_\_\_ day of \_\_\_\_\_, \_\_\_\_\_, said permanent marker was \_\_\_\_\_

Updated reference ties are as shown below.



**Revised date**

6/26/95
6/02/98
10/15/98

N.A.D. 1983 Coordinates  
(1996 Adjustment)

County Project Coordinates
Northing <u>145615.3480</u>
Easting <u>526677.7228</u>
Date <u>10/15/98</u>

I hereby certify that this United States public land survey monument record is correct and complete to the best of my knowledge and belief.

\_\_\_\_\_, Date \_\_\_\_\_

\_\_\_\_\_, Anoka County Surveyor

Minnesota License Number \_\_\_\_\_

# CERTIFICATE OF LOCATION OF GOVERNMENT CORNER

County of Anoka

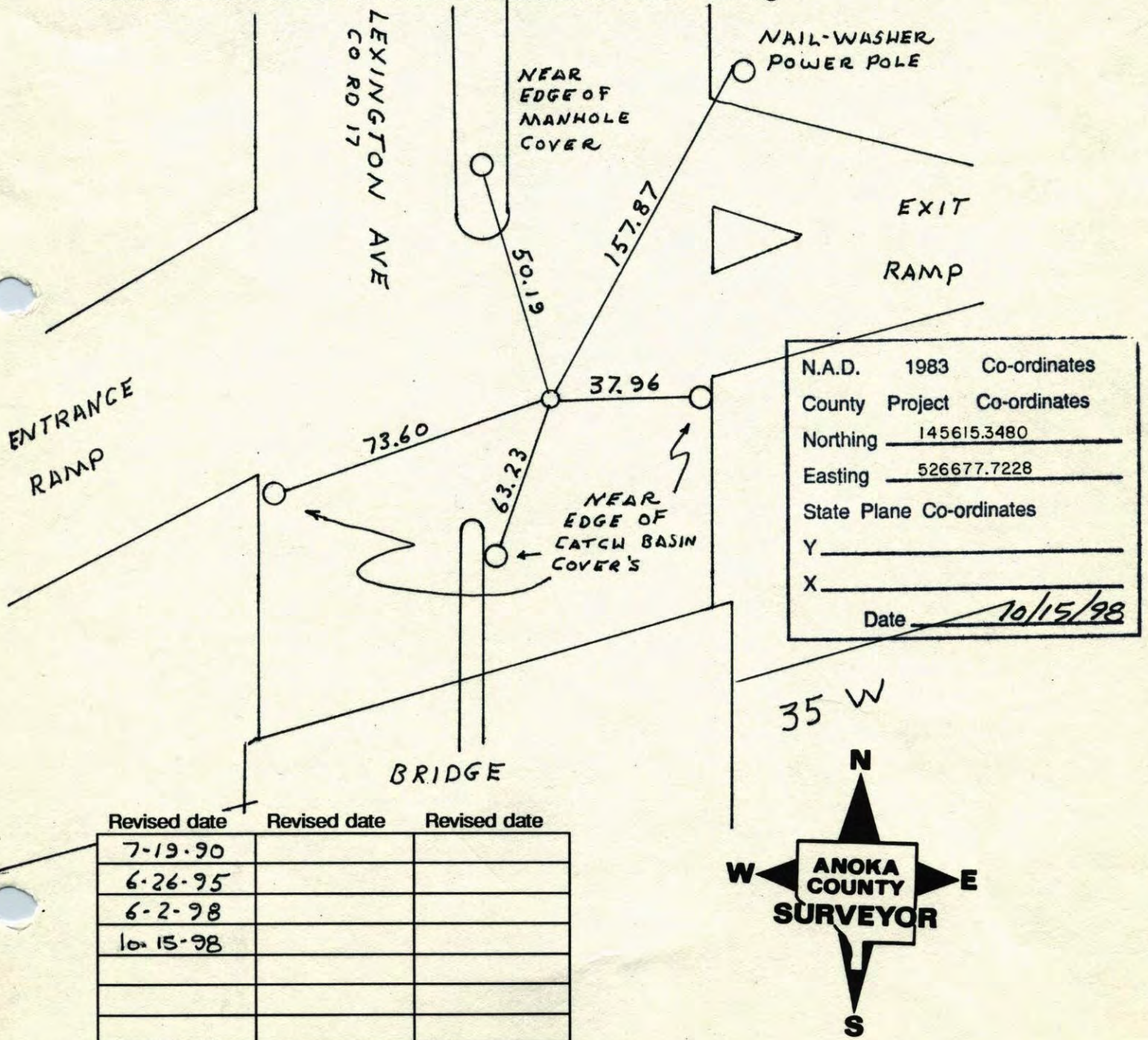
State of Minnesota

WEST 1/4 Corner of Sec. 24 Township 31 Range 23

I hereby certify that on the 21 day of OCT., 19 68, I found the described corner which was evidenced by AREA RESURVEY

and I further certify that to perpetuate the location of said corner, I did, at the exact location thereof, place a permanent marker consisting of CAST IRON MONUMENT

which reference or witness monuments are located in the manner following:

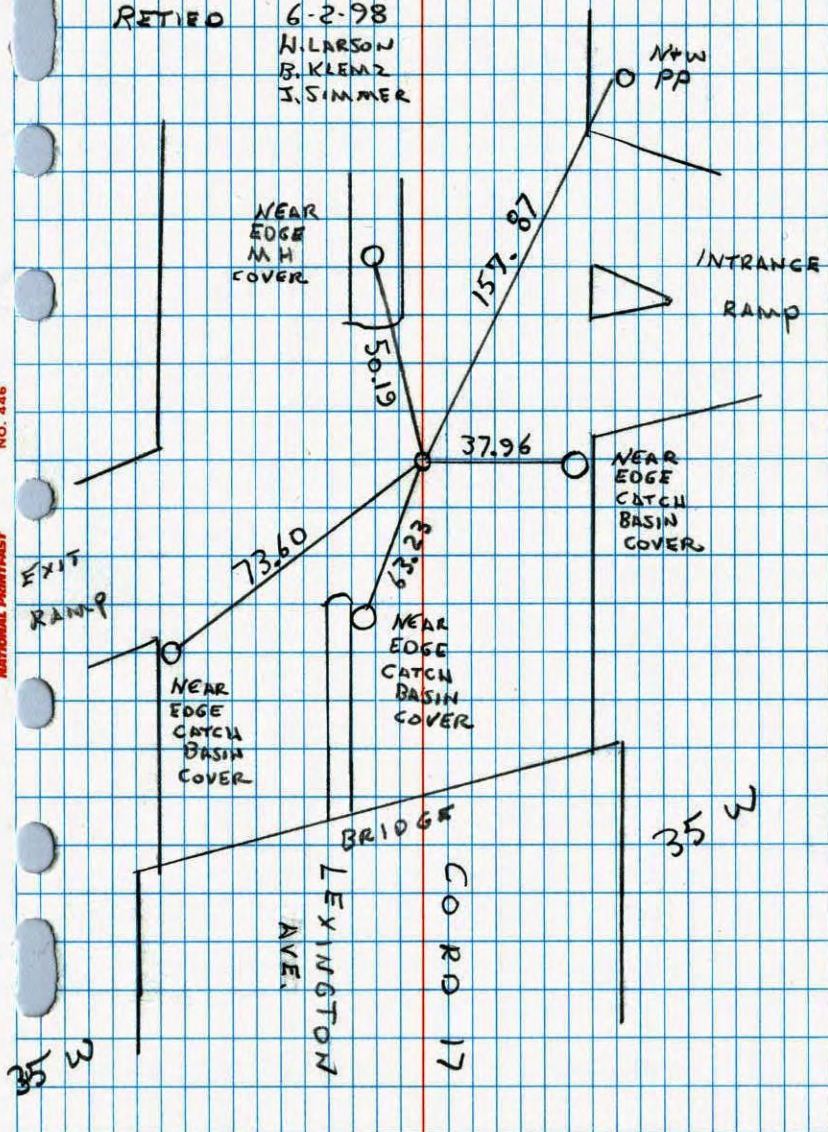


Revised date	Revised date	Revised date
7-19-90		
6-26-95		
6-2-98		
10-15-98		

W 1/4 COR. SEC. 24 T31 R23

RESET EAST IRON AFTER CONSTRUCTION

RETIRO 6-2-98  
 H. LARSON  
 B. KLEMM  
 J. SIMMER

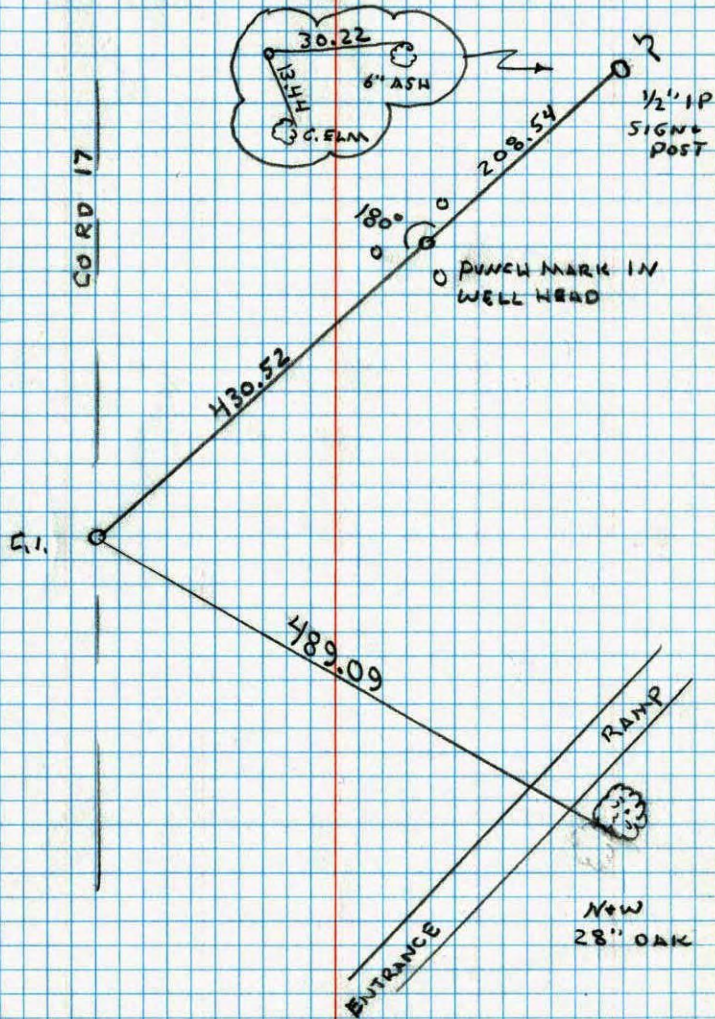


NATIONAL PORTRAST NO. 448

CONSTRUCTION TIES

W 1/4 SEC 24  
 E 1/4 SEC 23 T 31 R 23

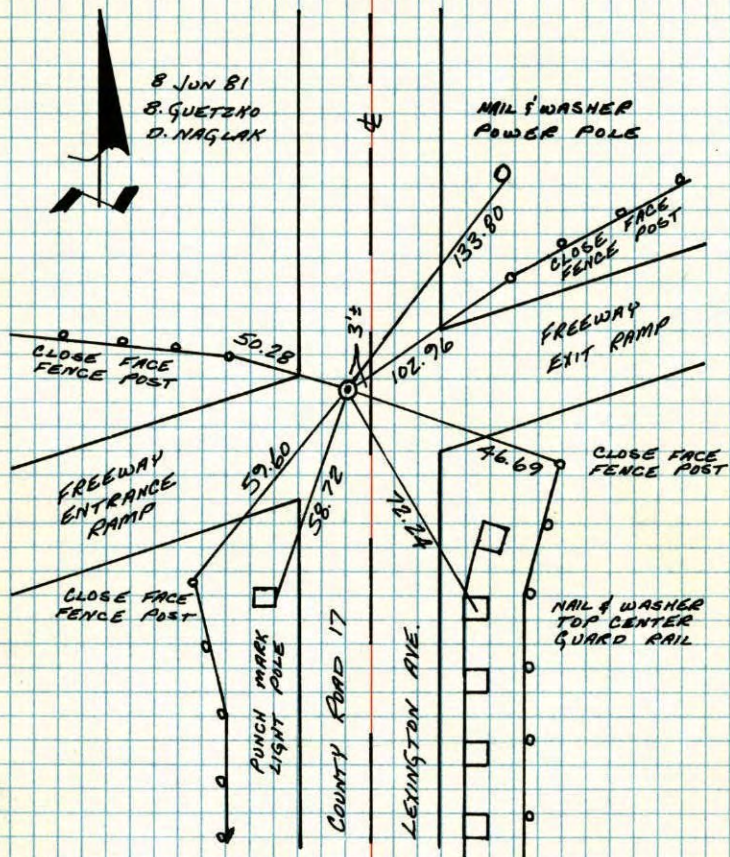
SET 1/2" IP. WITH USE OF WELL PIPE



NATIONAL PORTRAST NO. 448

W $\frac{1}{4}$  CORNER SECTION 24-T31-R23

RETIED CAST IRON MONUMENT, SET 21 OCT 68, BY  
M. D. ANDERSON. PK'S 2.00' NORTH AND EAST

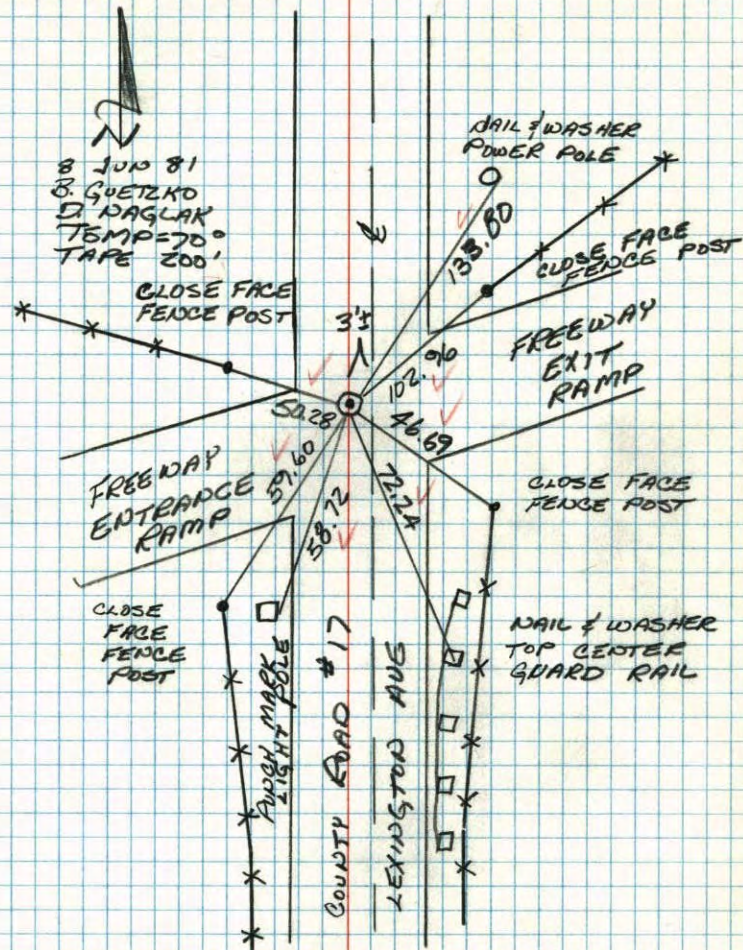


TEMPERATURE CORRECTED  
AND HORIZONTALLY  
TAPED MEASUREMENTS

ROLAND W. ANDERSON  
COUNTY SURVEYOR  
ANOKA COUNTY, MINNESOTA

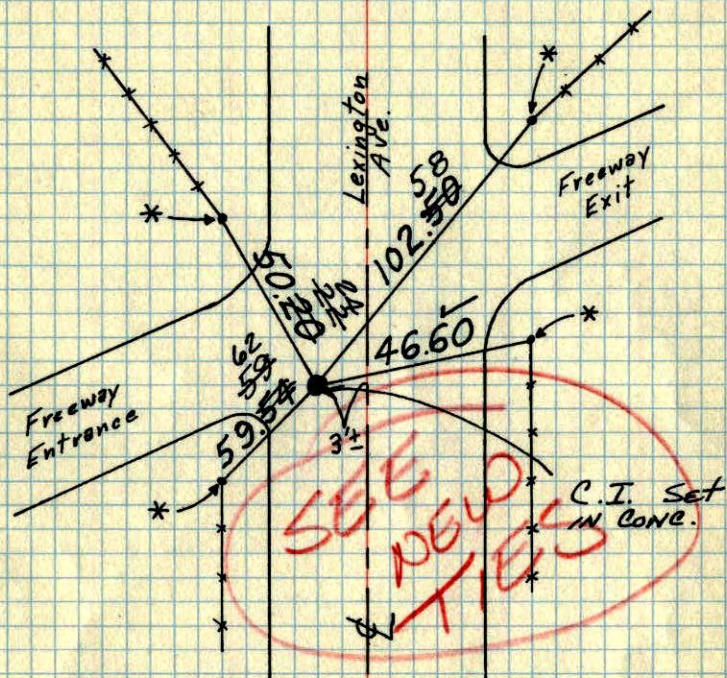
W $\frac{1}{4}$  CORNER SECTION 24-T31-R23

RETIED CAST IRON MONUMENT SET 21 OCT 68  
BY M. D. ANDERSON. PK'S 2.00' NORTH AND  
EAST.



# W 1/4 Cor. Sec. 24-T31-R23

Reset Cast Iron Monument from transit ties by this office and Geodometer distances from the North + South. SET PK'S 2.00' NORTH + EAST.



\* - All ties to close face of end fence post set in concrete.

October 21, 1968  
M. D. Anderson  
H. J. Larson  
R. A. Olson

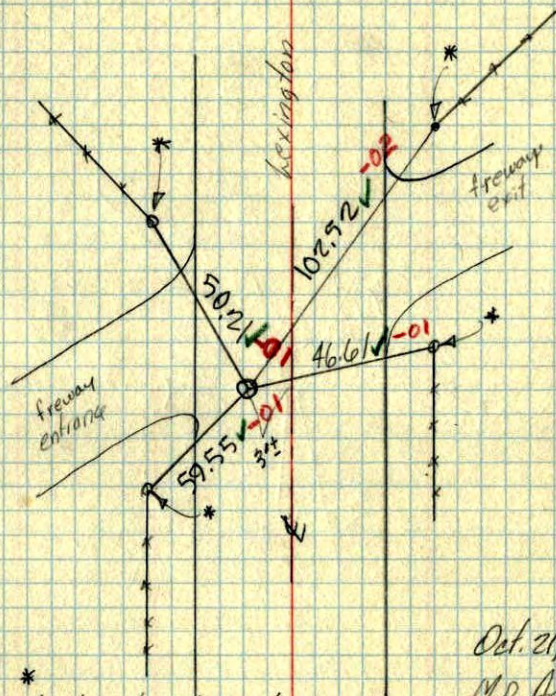
10-5-71	TIE CHECK
H. Larson	22 AUG 77
F. Waks	S. BRIEN
M. Senson	J. STEPHENS

Tie Check
5-22-75
D. Dahl
B. Guetzko
B. Sannerud

TEMPERATURE CORRECTED ROLAND W. ANDERSON  
AND HORIZONTALLY COUNTY SURVEYOR  
TAPED MEASUREMENTS ANOKA COUNTY, MINNESOTA

# W 1/4 Cor. Sec. 24-T31-R 23

Reset C.I. Mon. from transit ties by this office & Geodometer dists from the N. & S. (see fieldnotes)



\* All ties close face of end fence post set in concrete

Oct. 21, 1968  
M. D. Anderson  
H. J. Larson  
R. A. Olson  
Temp. 45.0 ✓  
Tape # 5 ✓