

CERTIFICATE OF LOCATION OF GOVERNMENT CORNER

County of Anoka

State of Minnesota

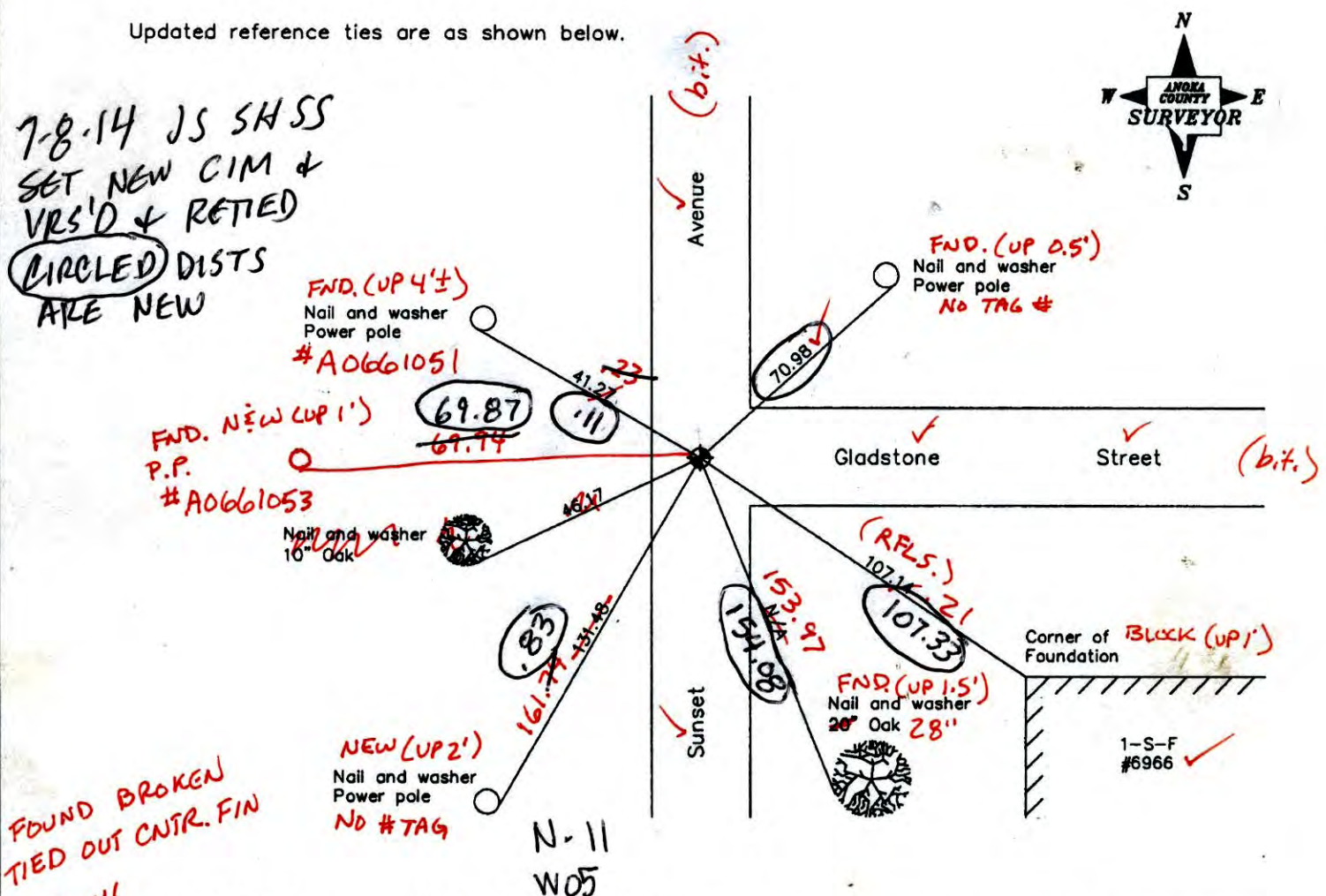
East 1/4 Corner of Sec. 24 Township 31 Range 23

On the 18th day of September, 1959, the described corner was evidenced by a bent iron pipe

and to perpetuate the location of said corner, at the exact location thereof, a permanent marker was placed consisting of a cast iron monument (1' ± E. AND 4' ± S. of E.E.)
NEEDS RESET

AND on the 28th day of June, 2006, said permanent marker was found and the ties were updated

Updated reference ties are as shown below.



7-8-14 JS SHSS
 SET NEW CIM &
 VRS'D & RETIED
 CIRCLED DIST.
 ARE NEW

FOUND BROKEN
 TIED OUT CNTR. FIN

5-28-14
 BK-SS
 TOTAL STA.
 VRS

Revised date
6/06/95
6/11/98
6/28/06

N.A.D. 1983 Coordinates (1996 Adjustment)	
County Project Coordinates	
Northing	145572.8399
Easting	531938.2376
Date	6/11/98

I hereby certify that this United States public land survey monument record is correct and complete to the best of my knowledge and belief.

Larry D. Hoium Date 6/28/06

Larry D. Hoium, Anoka County Surveyor
 Minnesota License Number 18165

3DQ = 0.07 N = 145572.7536 E = 531938.2262
 3DQ = 0.08 N = 145572.8450 E = 531938.1515

CERTIFICATE OF LOCATION OF GOVERNMENT CORNER

County of Anoka

State of Minnesota

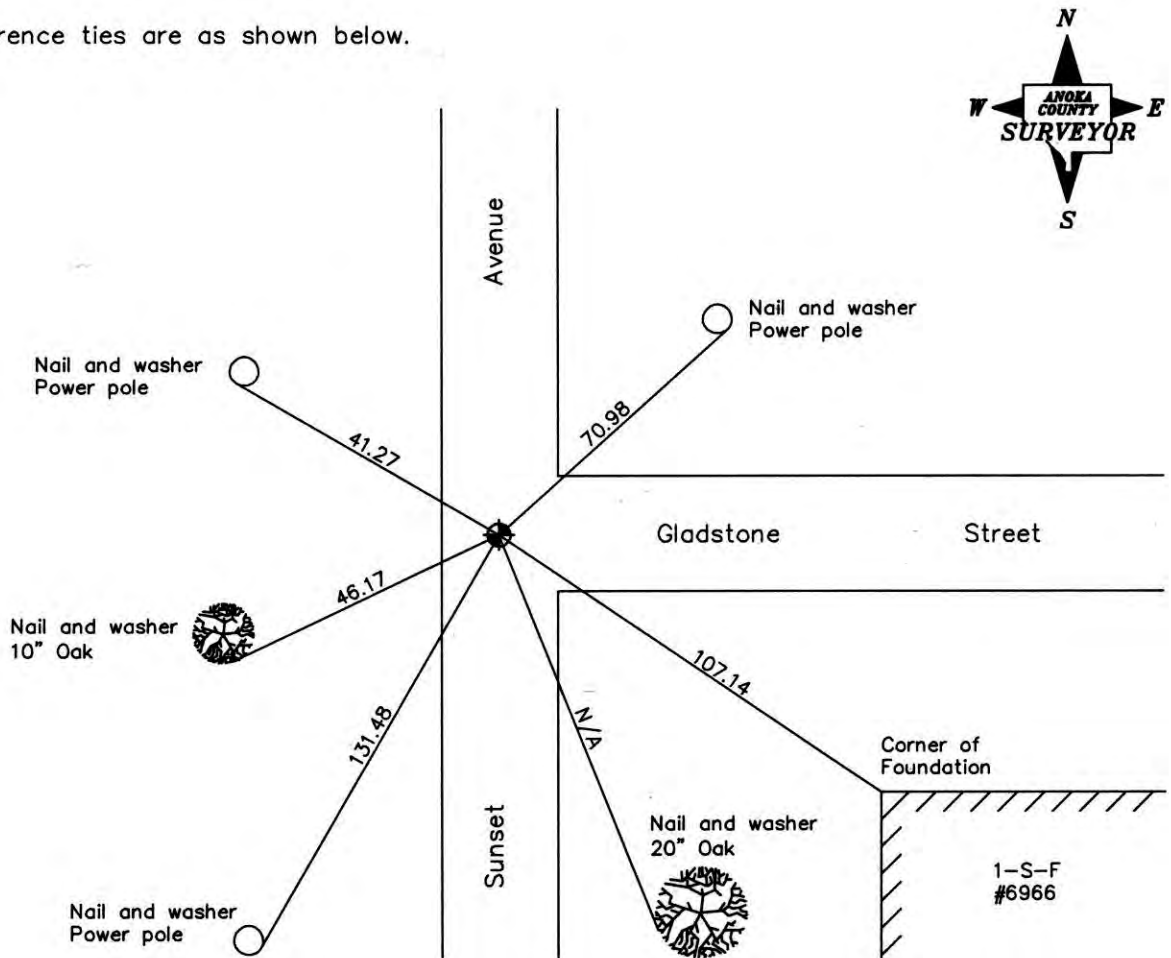
East 1/4 Corner of Sec. 24 Township 31 Range 23

On the 18th day of September, 1959, the described corner was evidenced by a bent iron pipe

and to perpetuate the location of said corner, at the exact location thereof, a permanent marker was placed consisting of a cast iron monument

AND on the 28th day of June, 2006, said permanent marker was found and the ties were updated

Updated reference ties are as shown below.



Revised date
6/06/95
6/11/98
6/28/06

N.A.D. 1983 Coordinates (1996 Adjustment)	
County Project Coordinates	
Northing	<u>145572.8399</u>
Easting	<u>531938.2376</u>
Date	<u>6/11/98</u>

I hereby certify that this United States public land survey monument record is correct and complete to the best of my knowledge and belief.

Larry D. Hoium Date 6/28/06

Larry D. Hoium, Anoka County Surveyor

Minnesota License Number 18165

CERTIFICATE OF LOCATION OF GOVERNMENT CORNER

County of Anoka

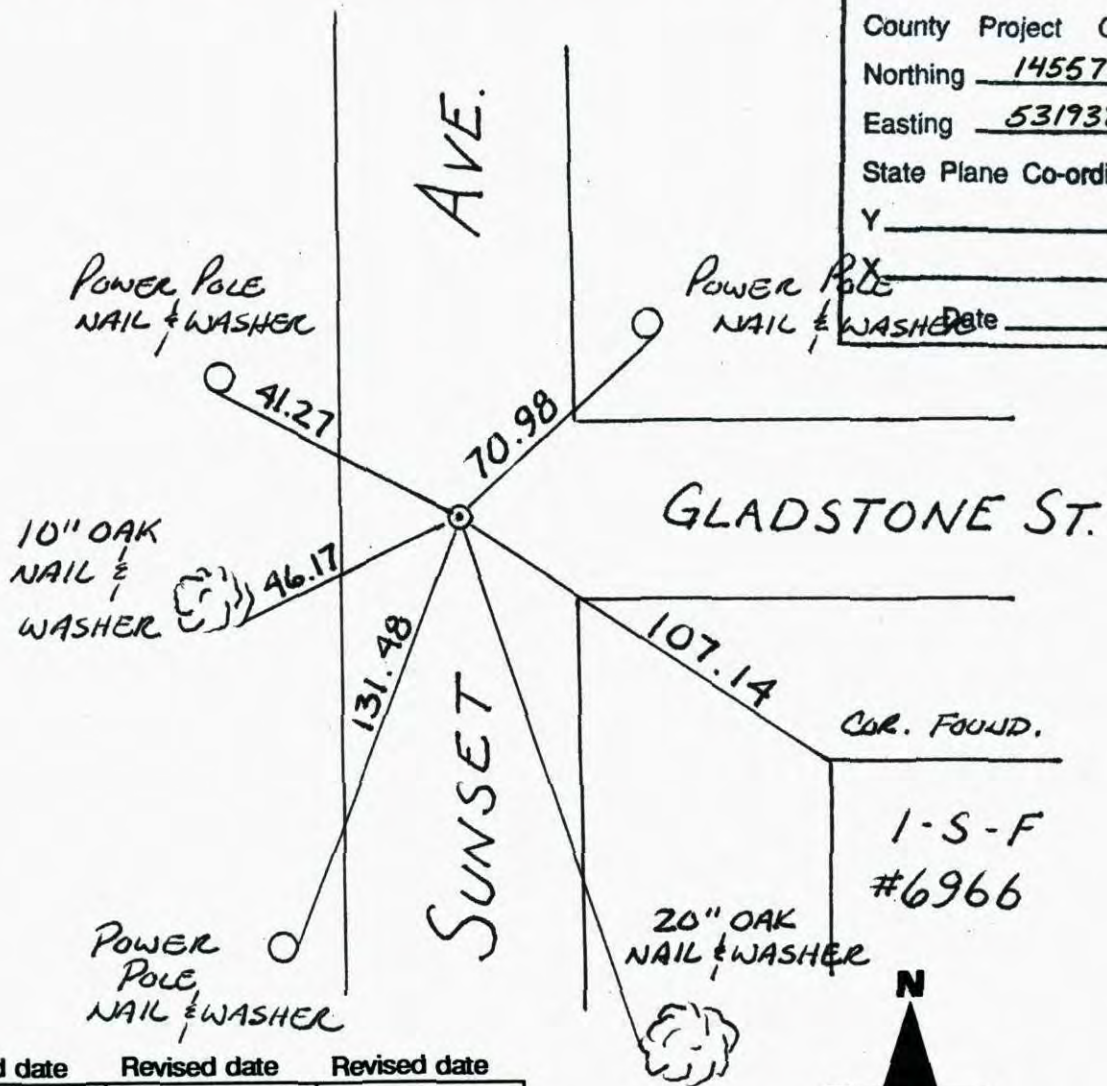
State of Minnesota

EAST 1/4 Corner of Sec. 24 Township 31 Range 23

I hereby certify that on the 18 day of SEPT., 19 59, I found the described corner which was evidenced by BENT IRON

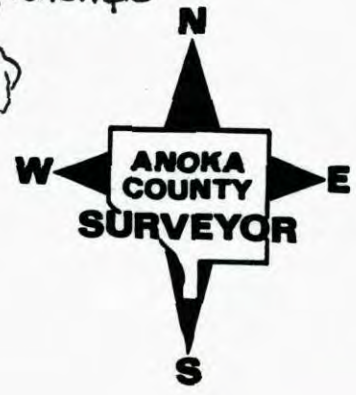
and I further certify that to perpetuate the location of said corner, I did, at the exact location thereof, place a permanent marker consisting of CAST IRON MON'T.

which reference or witness monuments are located in the manner following:



N.A.D.	1983	Co-ordinates
County	Project	Co-ordinates
Northing	<u>145572.8399</u>	
Easting	<u>531938.2376</u>	
State Plane	Co-ordinates	
Y	_____	
Date	_____	

Revised date	Revised date	Revised date
<u>6-29-90</u>		
<u>6-6-95</u>		
<u>6-11-98</u>		
<u>6-28-06</u>		



CERTIFICATE OF LOCATION OF GOVERNMENT CORNER

County of Anoka

State of Minnesota

EAST QTR. Corner of Sec. 24 Township 31 Range 23

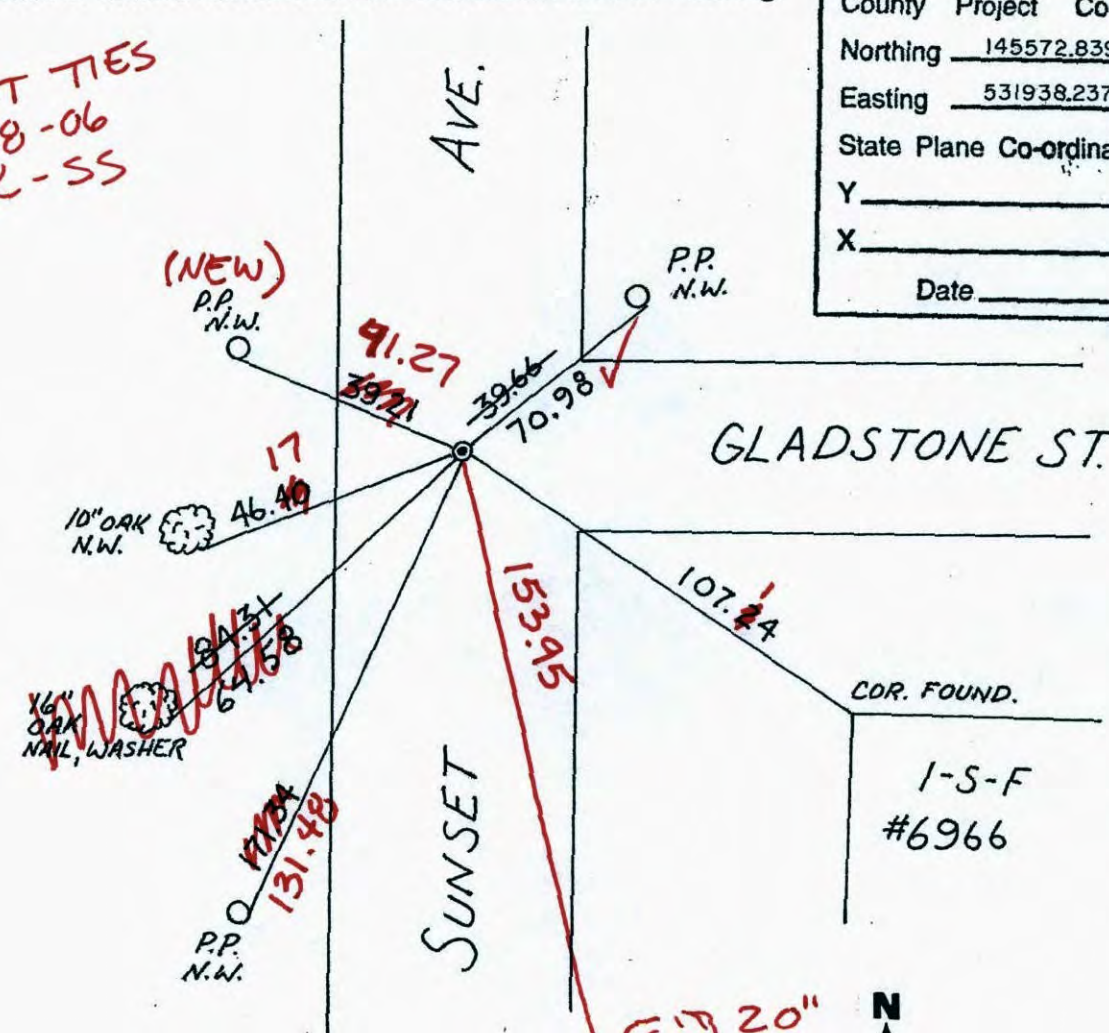
I hereby certify that on the 18 day of SEPT., 19 59, I found the described corner which was evidenced by BENT IRON

and I further certify that to perpetuate the location of said corner, I did, at the exact location thereof, place a permanent marker consisting of CAST IRON MON.

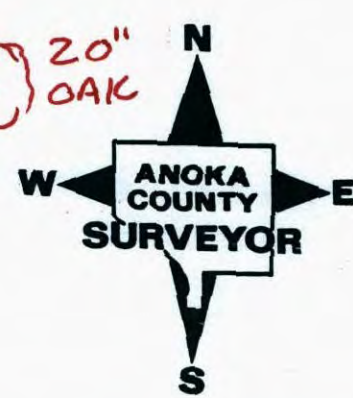
which reference or witness monuments are located in the manner following:

N.A.D.	1983	Co-ordinates
County	Project	Co-ordinates
Northing	<u>145572.8399</u>	
Easting	<u>531938.2376</u>	
State Plane Co-ordinates	Y _____	
	X _____	
Date	_____	

TRANSIT TIES
6-28-06
BK-SS



Revised date	Revised date	Revised date
6-29-90		
6-6-95		
6-11-98		



CERTIFICATE OF LOCATION OF GOVERNMENT CORNER

County of Anoka

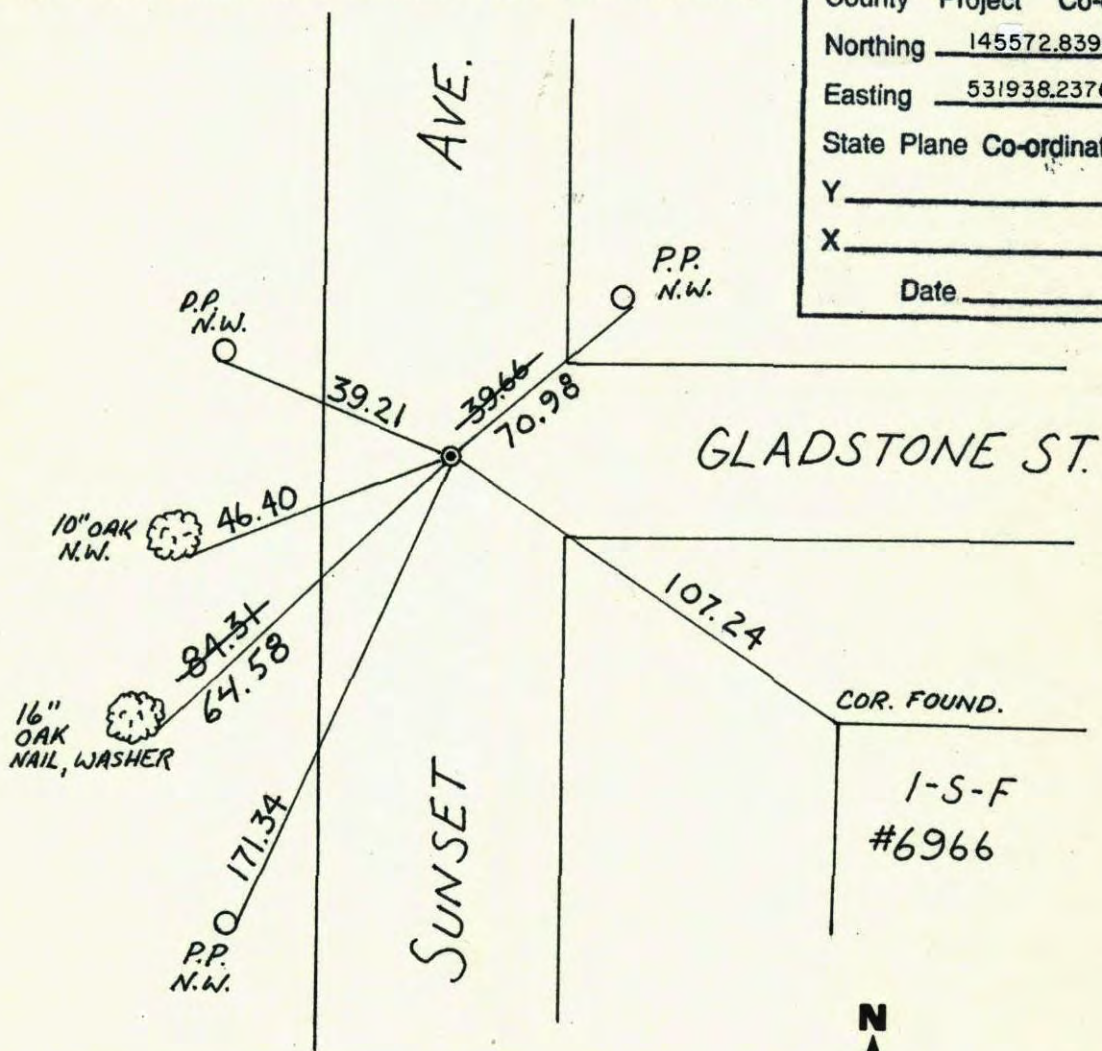
State of Minnesota

EAST QTR. Corner of Sec. 24 Township 31 Range 23

I hereby certify that on the 18 day of SEPT., 1959, I found the described corner which was evidenced by BENT IRON

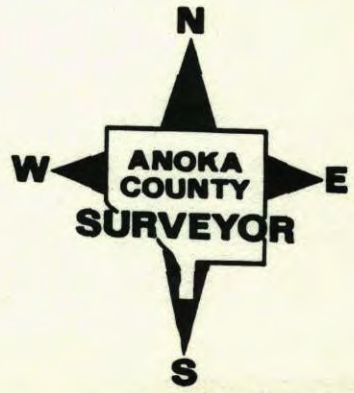
and I further certify that to perpetuate the location of said corner, I did, at the exact location thereof, place a permanent marker consisting of CAST IRON MON.

which reference or witness monuments are located in the manner following:



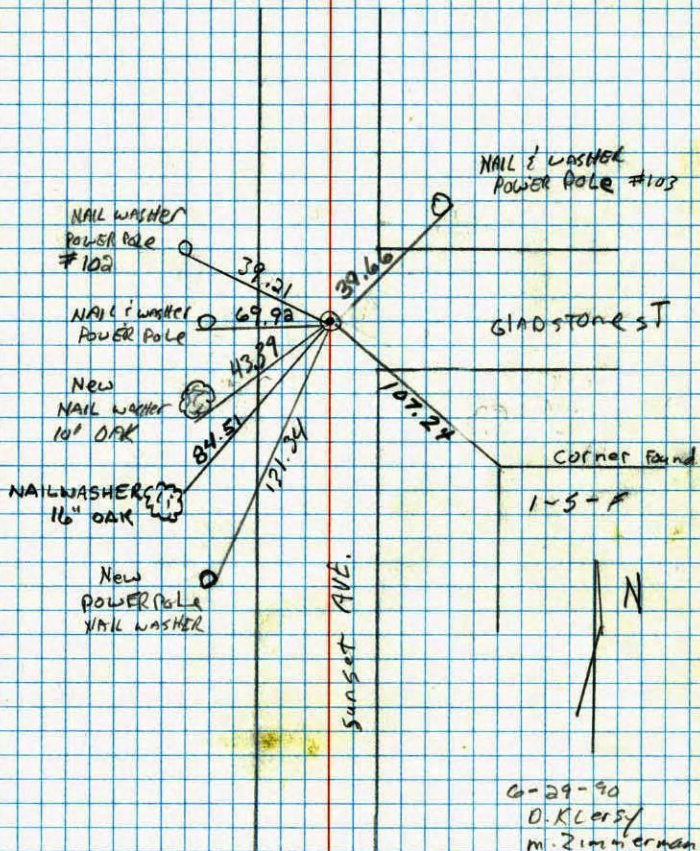
N.A.D.	1983	Co-ordinates
County	Project	Co-ordinates
Northing	<u>145572.8399</u>	
Easting	<u>531938.2376</u>	
State Plane	Co-ordinates	
Y	_____	
X	_____	
Date	_____	

Revised date	Revised date	Revised date
<u>6-29-90</u>		
<u>6-6-95</u>		
<u>6-11-98</u>		



EAST 1/4 corner sec 24 T 31 R 23

Retired cast iron monument



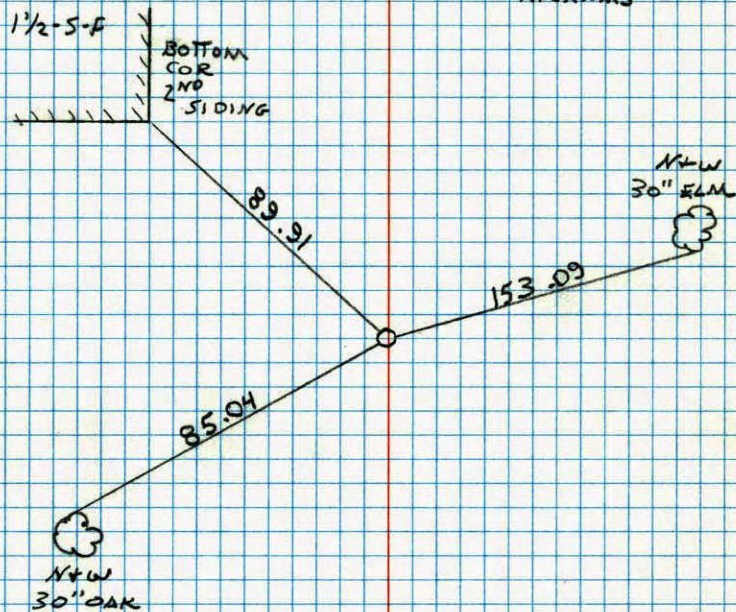
West

EAST 1/4 COR. SECTION 24 T31 R23

TOOK ADDITIONAL TIES FOR CONSTRUCTION

REMOVED C.I.

*5 65°
9-8-86
R. LARSEN
B. GUETKO
H. GRAMS



E 1/4 Cor. sec. 24, T31, R23

~~Bent Iron Down - 18"~~
~~P.R. spike 0.1" East~~

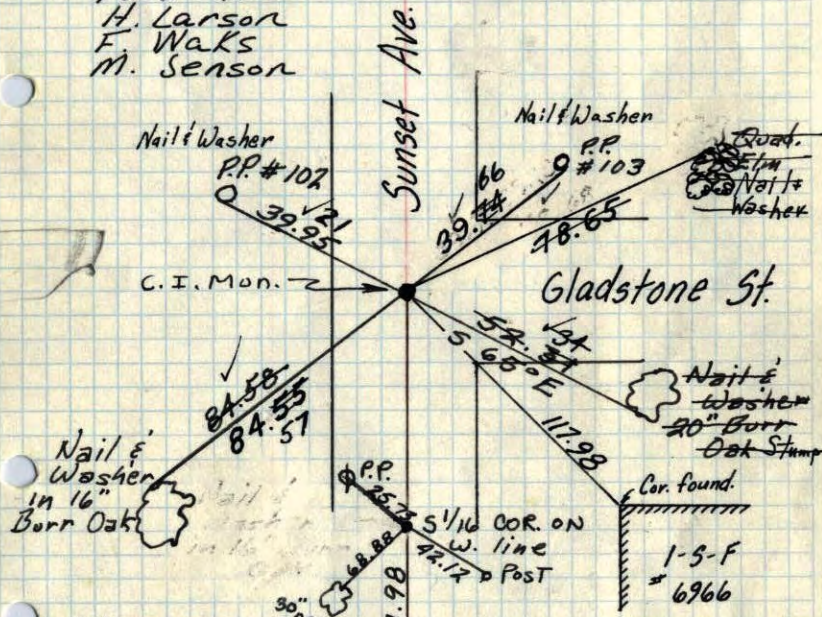
Set Cast Iron Monument flush from ties.

July 18, 1968

D. Powell
 P. Pich
 R. Olson

10-5-71
 H. Larson
 F. Waks
 M. Senon

July 26, 1965
 Anderson, Dunlop
 Replaced with
 Cast Iron Mon.



Retie 6/10/64

M. D. Anderson
 R. Carlson

Tie Check
 May 20, 1975
 D. Dahl
 B. Sunnerud
 Tie Check
 23 Aug 77
 S. BRIEN
 J. STEPHENS

TIE CHECK
 6-2-80
 B. STEPHENS
 P. ROSS
 P. HORNBY

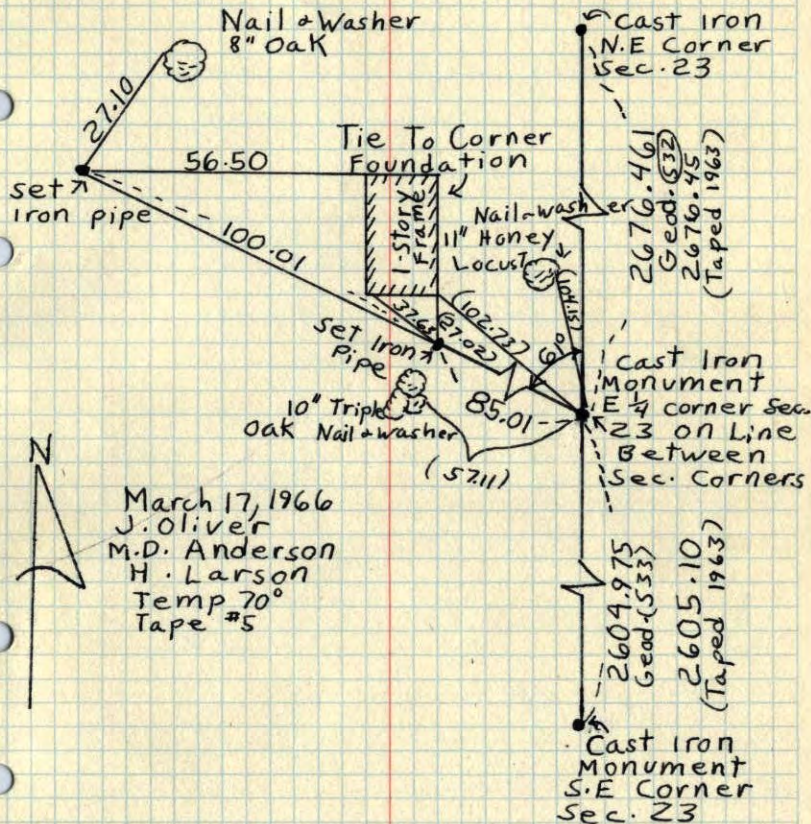
SE COR
 SEC 24

9/18/59
 Bill Rogers Assisting

ROLAND W. ANDERSON
 COUNTY SURVEYOR
 ANOKA COUNTY, MINNESOTA

E 1/4 Cor. Sec. 23, T31, R23

Took transit ties because of
 Interstate #35 w Construction



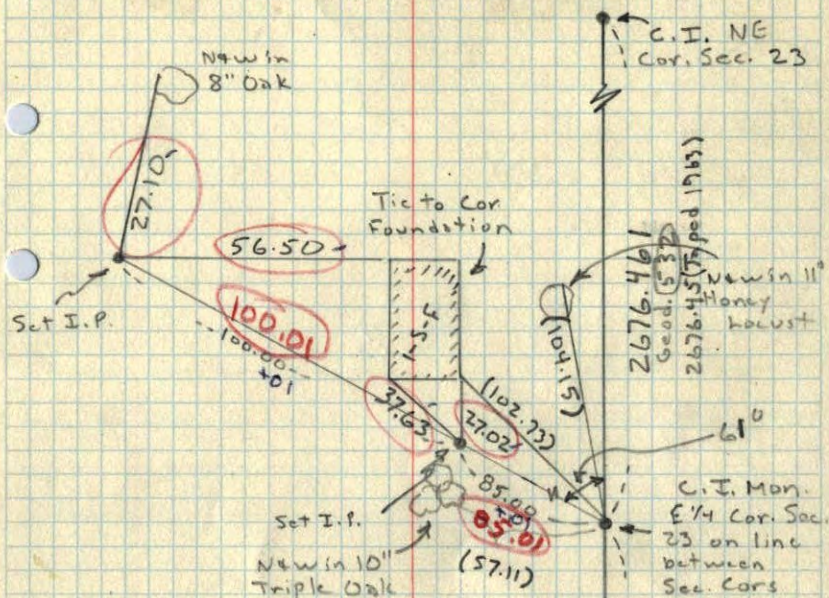
March 17, 1966
 J. Oliver
 M. D. Anderson
 H. Larson
 Temp 70°
 Tape #5

TEMPERATURE CORRECTED
 AND HORIZONTALLY
 TAPED MEASUREMENTS

ROLAND W. ANDERSON
 COUNTY SURVEYOR
 ANOKA COUNTY, MINNESOTA

E 1/4 Cor. Sec. 23, T31, R23

Took transit ties because of Interstate
#35 w Construction.



Mar. 17, 1966
70° ± 5

J. Oliver
M.D. Anderson
H. Larson

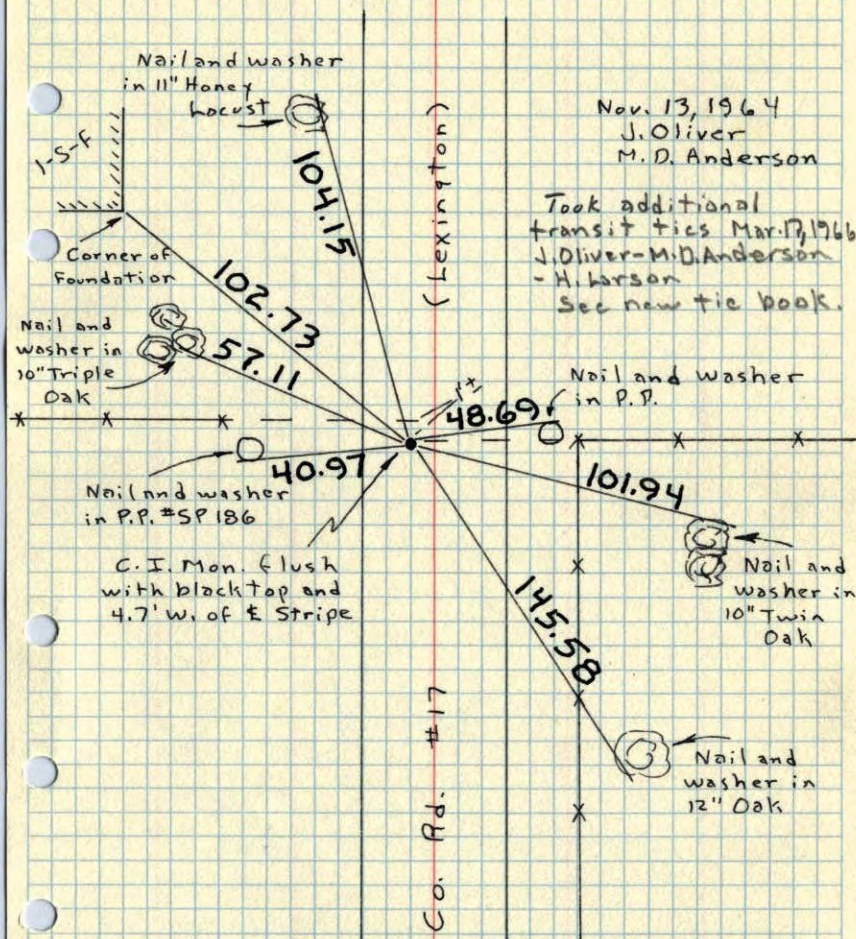
() dist are
corrected

ROLAND W. ANDERSON
COUNTY SURVEYOR
ANOKA COUNTY, MINNESOTA

**TEMPERATURE CORRECTED
AND HORIZONTALLY
TAPED MEASUREMENTS**

E 1/4 Cor. Sec. 23, T31, R23

Set Cast Iron Monument From Resurvey. Also
set PK Spks 2.00' North and East.



Nov. 13, 1964
J. Oliver
M.D. Anderson

Took additional
transit ties Mar. 17, 1966
J. Oliver - M.D. Anderson
- H. Larson
See new tie book.

ROLAND W. ANDERSON
COUNTY SURVEYOR
ANOKA COUNTY, MINNESOTA

**TEMPERATURE CORRECTED
AND HORIZONTALLY
TAPED MEASUREMENTS**

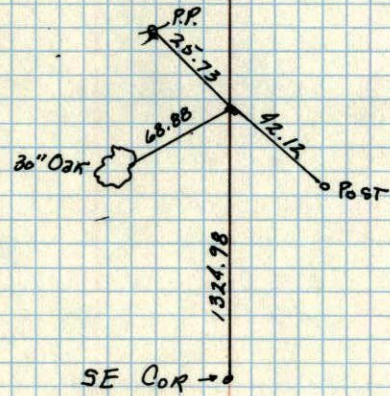
S 1/16 COR ON W. LINE & E 1/4 COR SEC 24, T31, R23

SPIKE

R.R. SPIKE

*Replaced
true
spike*

E 1/4 → R.R. SPIKE



CARLEY