

CERTIFICATE OF LOCATION OF GOVERNMENT CORNER

County of Anoka State of Minnesota

Northwest Corner of Sec. 25 Township 31 Range 23

On the 26th day of June, 1959, the described corner was evidenced by a concrete monument

and to perpetuate the location of said corner, at the exact location thereof, a permanent marker was placed consisting of a cast iron monument BROKEN TOP / NEEDS RESET

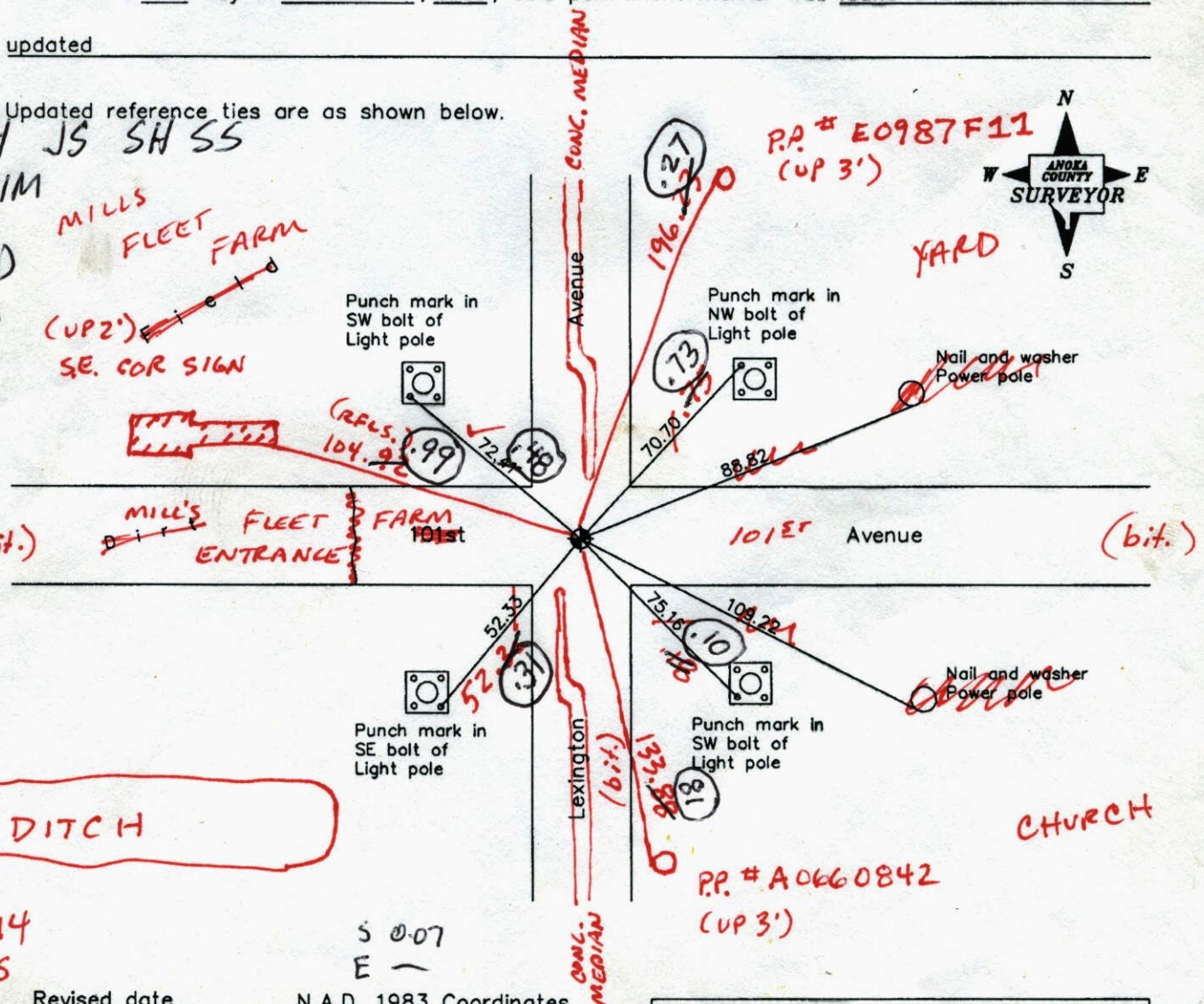
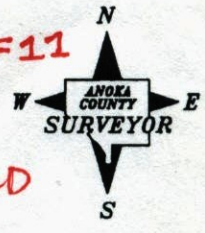
AND on the 12th day of June, 2006, said permanent marker was found and the ties were updated

Updated reference ties are as shown below.

7-9-14 JS SH SS
SET CIM
VRS'D
& RETIED
NEW TIES
CIRCLED

MILLS FLEET FARM
(UP 2')
SE. COR SIGN

P.P. # E0987F11
(UP 3')



6-26-14
BK-SS
T/T

Revised date	
	6/01/98
	10/15/98
	6/12/06

N.A.D. 1983 Coordinates (1996 Adjustment)	
County Project Coordinates	
Northing	143010.4778
Easting	526642.0679
Date	10/09/98

I hereby certify that this United States public land survey monument record is correct and complete to the best of my knowledge and belief.

Larry D. Hoium Date 6/12/06

Larry D. Hoium, Anoka County Surveyor
Minnesota License Number 18165

3DQ = 0.05

N: 143010.4747
E: 526642.0137

CERTIFICATE OF LOCATION OF GOVERNMENT CORNER

County of Anoka

State of Minnesota

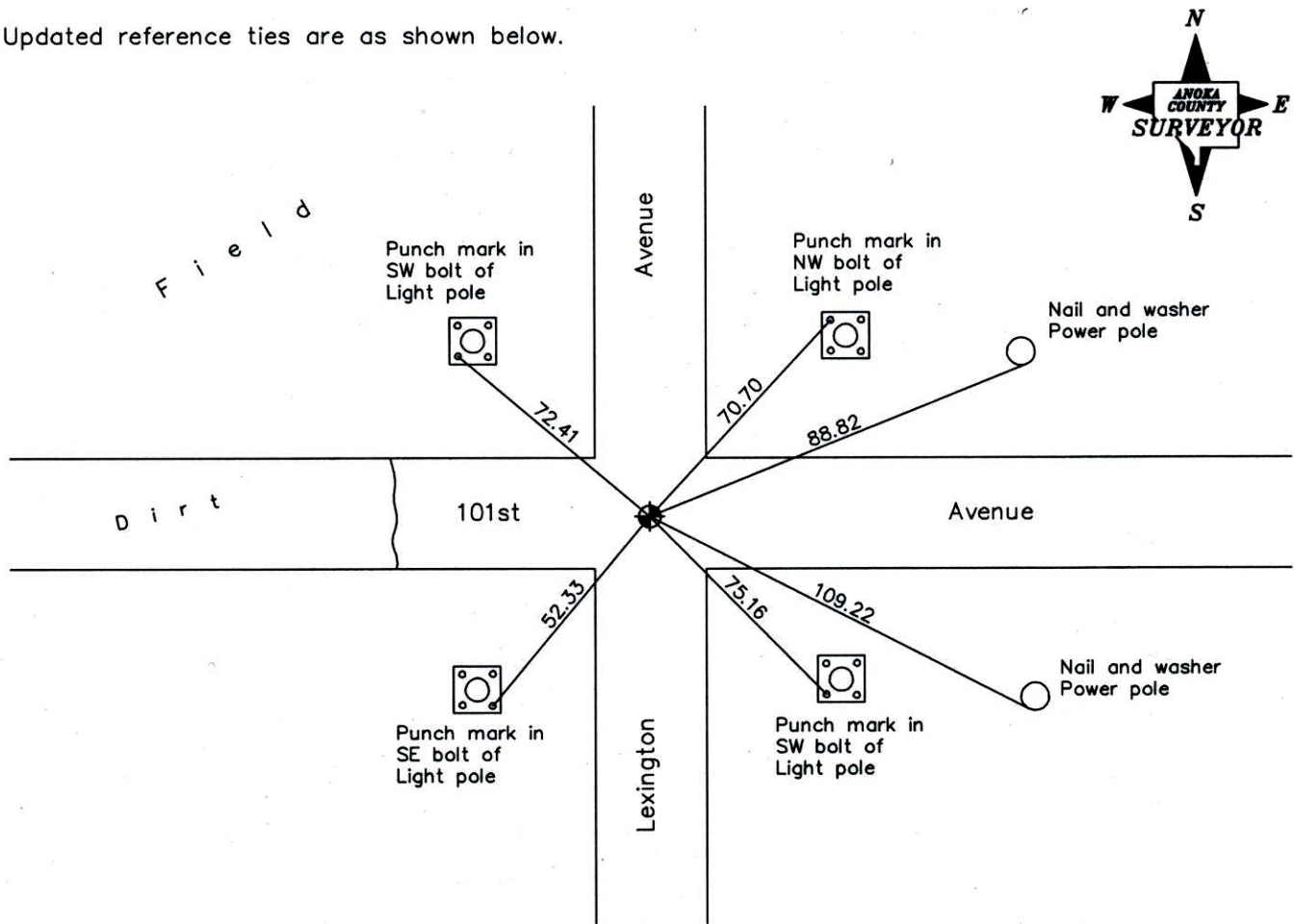
Northwest Corner of Sec. 25 Township 31 Range 23

On the 26th day of June, 1959, the described corner was evidenced by a concrete monument

and to perpetuate the location of said corner, at the exact location thereof, a permanent marker was placed consisting of a cast iron monument

AND on the 12th day of June, 2006, said permanent marker was found and the ties were updated

Updated reference ties are as shown below.



Revised date

6/01/98
10/15/98
6/12/06

**N.A.D. 1983 Coordinates
(1996 Adjustment)**

County Project Coordinates	
Northing	<u>143010.4778</u>
Easting	<u>526642.0679</u>
Date	<u>10/09/98</u>

I hereby certify that this United States public land survey monument record is correct and complete to the best of my knowledge and belief.

Larry D. Hoium Date 6/12/06
 _____, Anoka County Surveyor
 Minnesota License Number 18165

CERTIFICATE OF LOCATION OF GOVERNMENT CORNER

County of Anoka

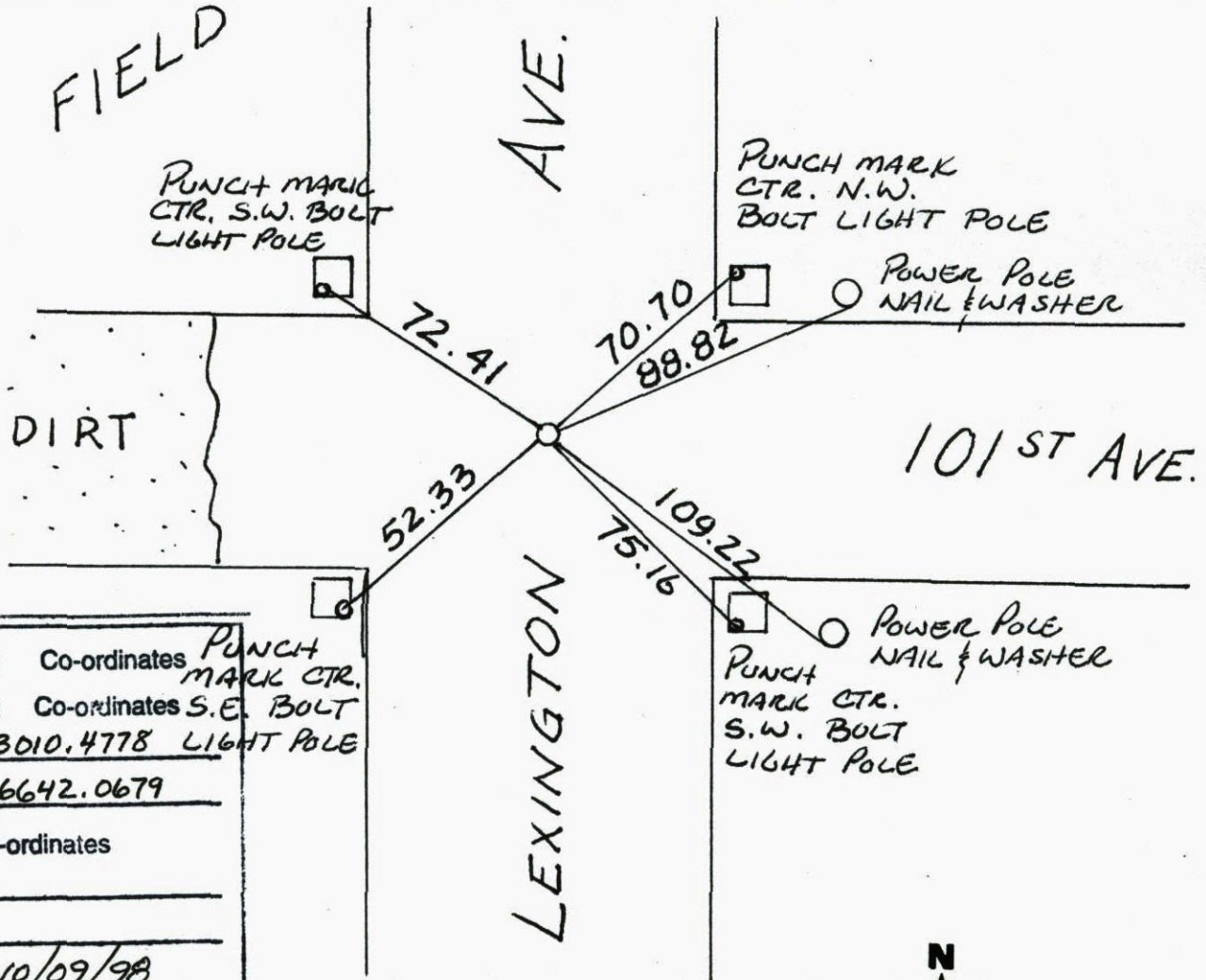
State of Minnesota

NORTHW. Corner of Sec. 25 Township 31 Range 23

I hereby certify that on the 26 day of JUNE, 1959, I found the described corner which was evidenced by CONCRETE MON'T.

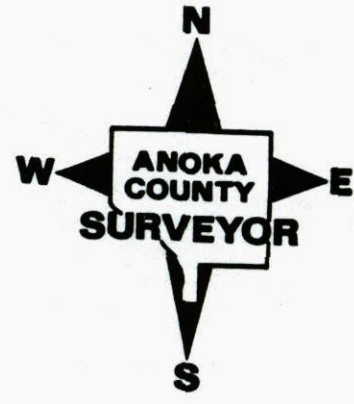
and I further certify that to perpetuate the location of said corner, I did, at the exact location thereof, place a permanent marker consisting of CAST IRON MON.T.

which reference or witness monuments are located in the manner following:



N.A.D. 1983 Co-ordinates PUNCH MARK CTR.
 County Project Co-ordinates S.E. BOLT LIGHT POLE
 Northing 143010.4778
 Easting 526642.0679
 State Plane Co-ordinates
 Y _____
 X _____
 Date 10/09/98

Revised date	Revised date	Revised date
7-19-90		
6-26-95		
6-1-98		
10-15-98		
6-12-06		



CERTIFICATE OF LOCATION OF GOVERNMENT CORNER

County of Anoka State of Minnesota

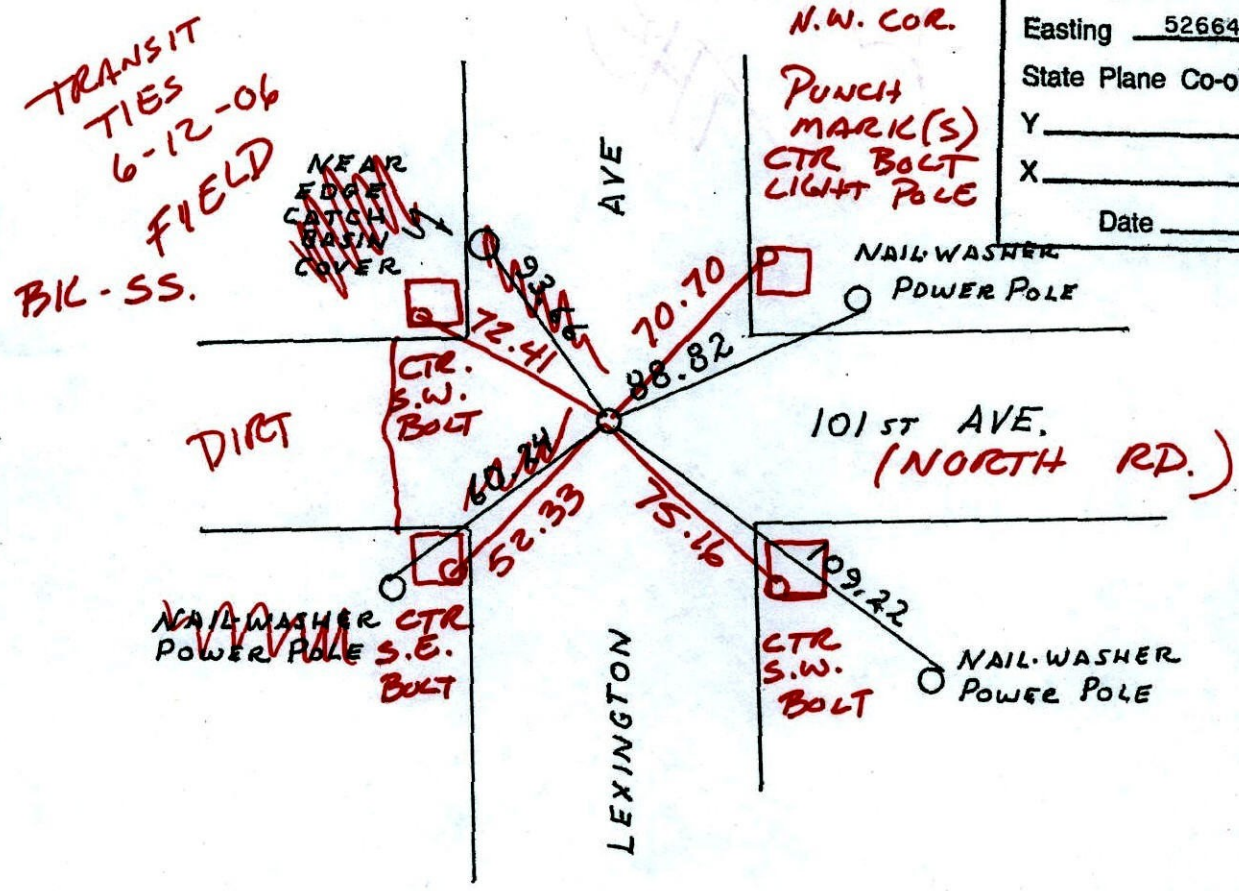
NORTHWEST Corner of Sec. 25 Township 31 Range 23

I hereby certify that on the 26 day of JUNE, 19 59, I found the described corner which was evidenced by CONCRETE MONUMENT

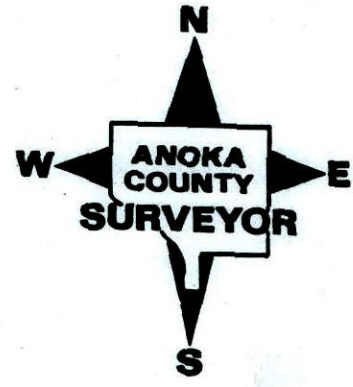
and I further certify that to perpetuate the location of said corner, I did, at the exact location thereof, place a permanent marker consisting of CAST IRON MONUMENT

which reference or witness monuments are located in the manner following:

N.A.D.	1983	Co-ordinates
County	Project	Co-ordinates
Northing	143010.4778	
Easting	526642.0679	
State Plane Co-ordinates	Y _____	
	X _____	
Date	_____	



Revised date	Revised date	Revised date
7-19-90		
6-26-95		
6-1-98		
10-15-98		
6-12-06		



CERTIFICATE OF LOCATION OF GOVERNMENT CORNER

County of Anoka State of Minnesota

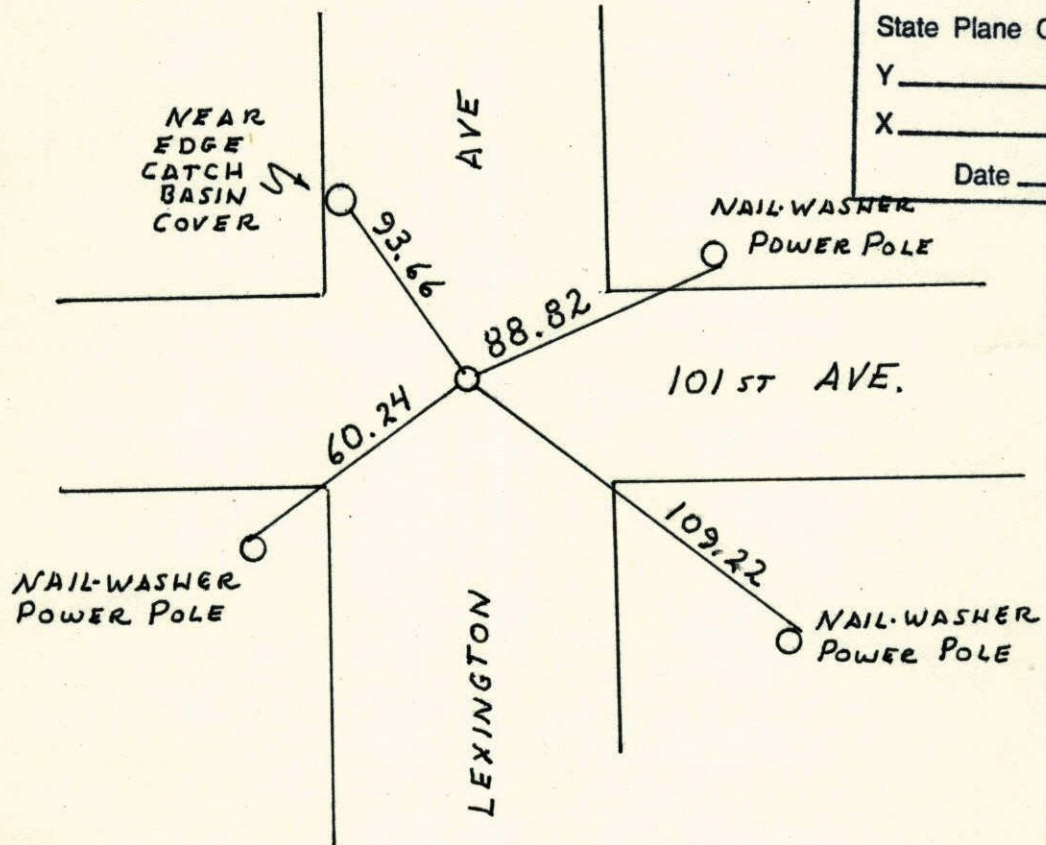
NORTHWEST Corner of Sec. 25 Township 31 Range 23

I hereby certify that on the 26 day of JUNE, 19 59, I found the described corner which was evidenced by CONCRETE MONUMENT

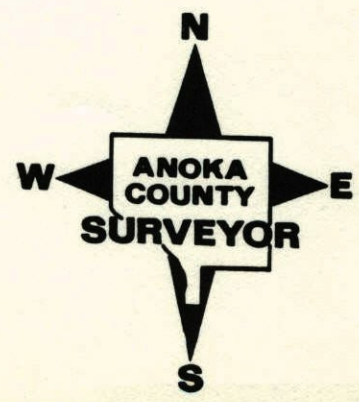
and I further certify that to perpetuate the location of said corner, I did, at the exact location thereof, place a permanent marker consisting of CAST IRON MONUMENT

which reference or witness monuments are located in the manner following:

N.A.D.	1983	Co-ordinates
County Project		Co-ordinates
Northing	143010.4778	
Easting	526642.0679	
State Plane Co-ordinates		
Y	_____	
X	_____	
Date	_____	



Revised date	Revised date	Revised date
7-19-90		
6-26-95		
6-1-98		
10-15-98		



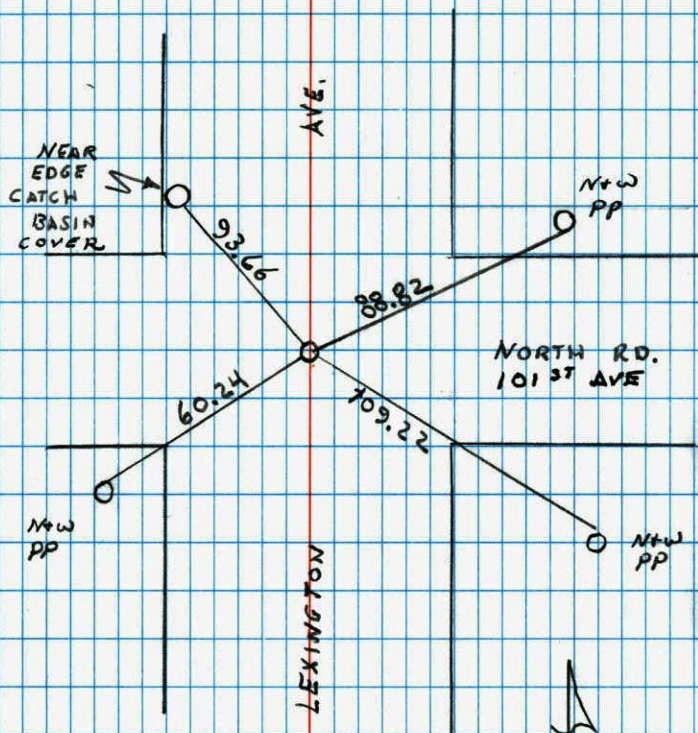
NW COR. SEC 25 T31 R23

RESET C.I. AFTER CONSTRUCTION

RETIRO

NO. 446

NATIONAL INSTRUMENT



6-1-98
N. LARSON
B. KLEMM
J. SIMMER

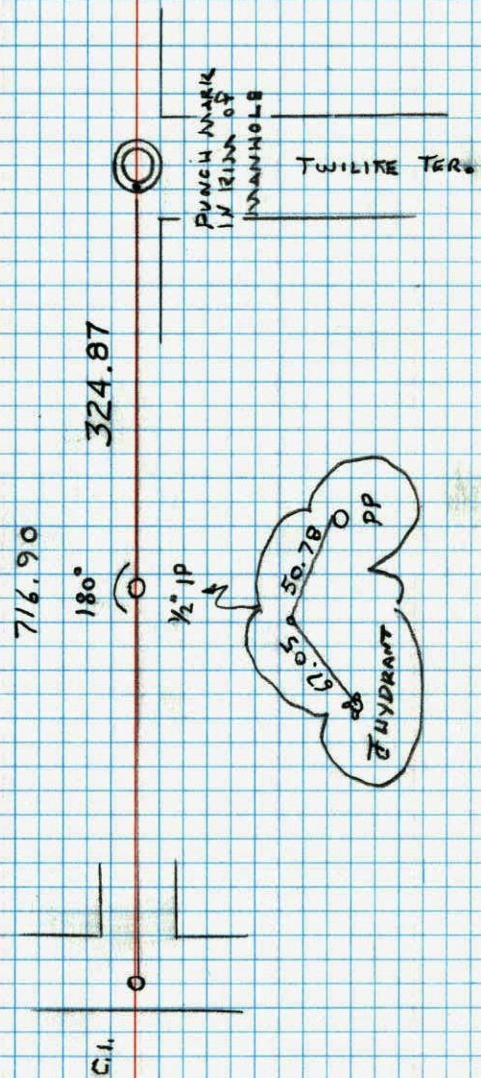
NW CORNER SECTION 25 T31 R23

SET 1/2 IP ON LINE WITH MANHOLE

NO. 448

TELEPHONE

4-16-97
N. LARSON
B. KLEMM
J. SIMMER



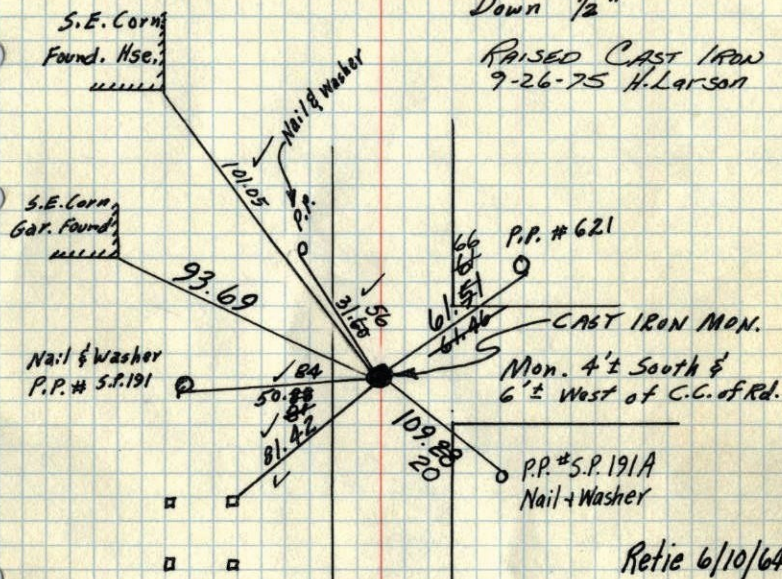
NW Corn. Sec. 25, T31, R23

Found Conc. Mon. broken off, down 21" base in place.
(Ties by Harvey Cartwright gone, dug six holes in Hwy
Blacktop before finding it on very North edge of 6th hole.)

Placed 20" Cast Iron Mon. on Top of Conc. Mon.

Down 1/2"

RAISED CAST IRON
9-26-75 H. Larson



N.E. Corn. of
N.E. Conc. Footing
of High line Tower

Retie 6/10/64

M. D. Anderson
R. Carlson

Jim Blevens of
Northern Natural Gas Co.
Assisting. 6/23/59

Tie Check
July 19, 1968
D. Powell
P. Pich
R. Olson

Tie Check
May 22, 1975
D. Dahl
B. Guetzko
B. Sannerud

ROLAND W. ANDERSON
COUNTY SURVEYOR
ANOKA COUNTY, MINNESOTA

9-28-71 TIE CHECK
H. Larson 22 AUG 77
M. Jensen S. BRIEN
J. STEPHENS

TIE CHECK
6-3-80
B. STEPHENS
P. ROSS
P. HORNBY

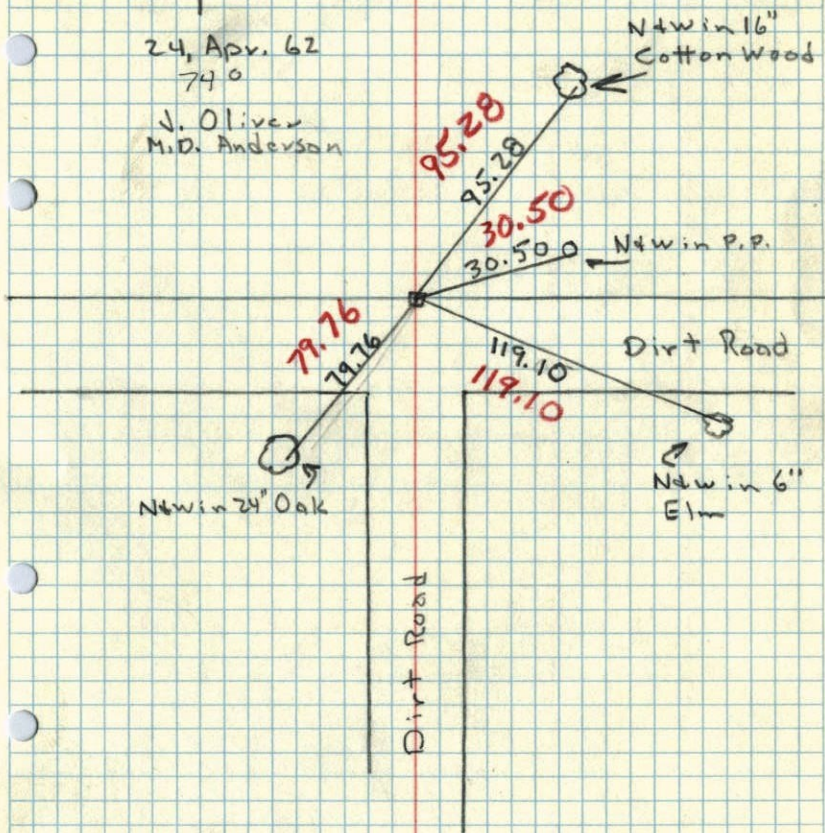
~~SW~~ Cor. Sec. 24, T 32, R 23

Found 6" Sq. Granite Mon. Flush
Set 3/4" I.P. on No. Side



24, Apr. 62
740

J. Oliver
M.D. Anderson



N4win 16"
Cotton Wood

N4win P.P.

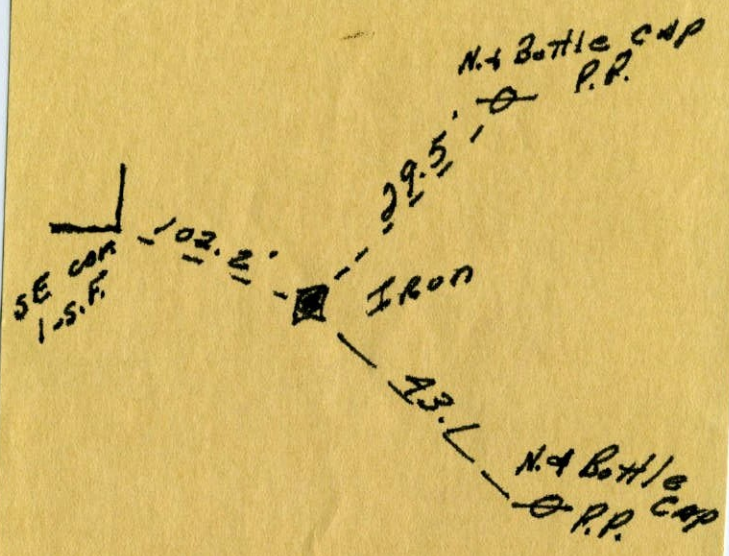
Dirt Road

N4win 6"
Elm

Dirt Road

N4win 24" Oak

NW cor. sec. 25 + 31 R23
Uncovered 7/2/56



NW 25
NE Sec. 26, T. 31, R. 23

Not correct
corner
F.W.A.

