

# CERTIFICATE OF LOCATION OF GOVERNMENT CORNER

County of Anoka

State of Minnesota

North 1/4 Corner of Sec. 26 Township 31 Range 23

On the 7th day of November, 1961, the described corner was evidenced by a concrete monument

and to perpetuate the location of said corner, at the exact location thereof, a permanent marker was placed consisting of a cast iron monument with a sign and post on the west side

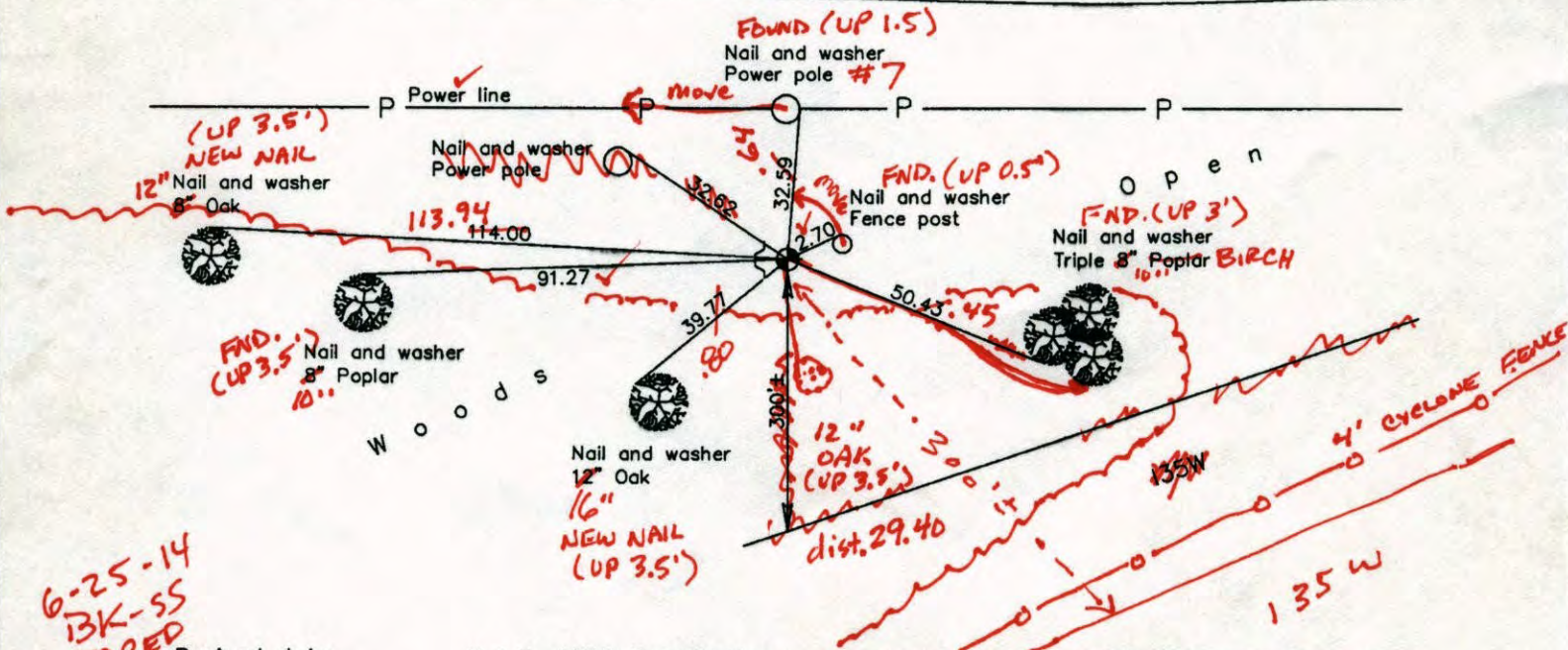
AND on the 27th day of June, 2006, said permanent marker was found and the ties were updated

Updated reference ties are as shown below.



O p e n

Ditch



6-25-14  
13K-SS  
TAPED

Revised date	8/02/95
	2/04/00
	6/27/06

N.A.D. 1983 Coordinates (1996 Adjustment)	
County Project Coordinates	
Northing	143024.5572
Easting	523965.7476
Date	2/04/00

I hereby certify that this United States public land survey monument record is correct and complete to the best of my knowledge and belief.

Date: 6/27/06  
 Larry D. Hoium, Anoka County Surveyor  
 Minnesota License Number 18165

# CERTIFICATE OF LOCATION OF GOVERNMENT CORNER

County of Anoka

State of Minnesota

North 1/4 Corner of Sec. 26 Township 31 Range 23

On the 7th day of November, 1961, the described corner was evidenced by a concrete monument

and to perpetuate the location of said corner, at the exact location thereof, a permanent marker was placed consisting of a cast iron monument with a sign and post on the west side

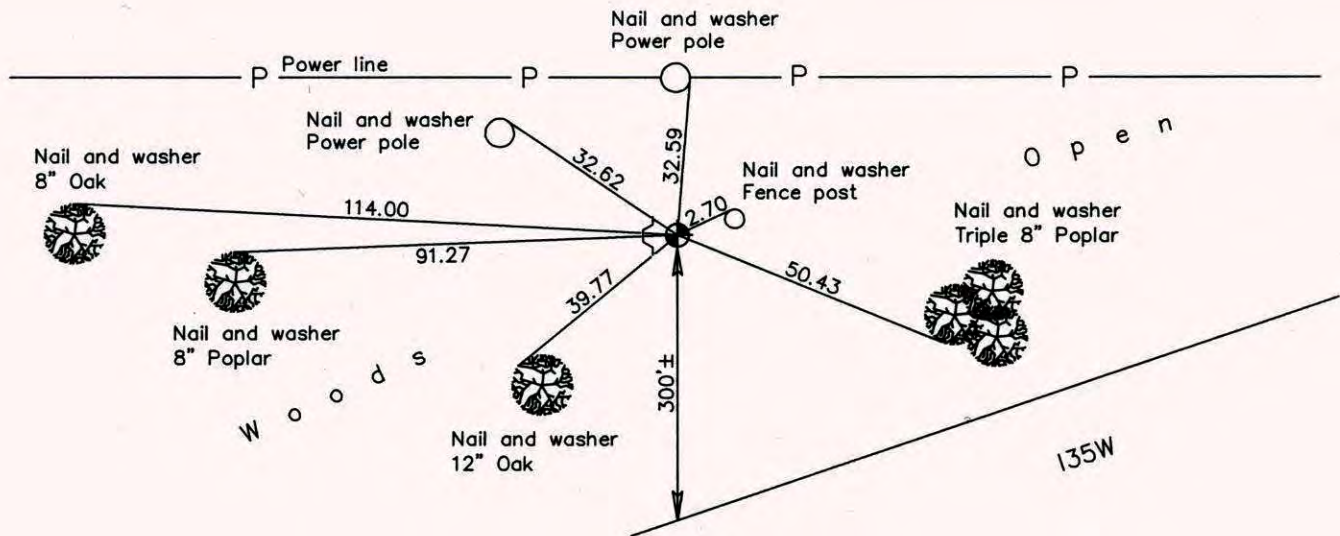
AND on the 27th day of June, 2006, said permanent marker was found and the ties were updated

Updated reference ties are as shown below.



o p e n

Ditch



Revised date

8/02/95
2/04/00
6/27/06

N.A.D. 1983 Coordinates  
(1996 Adjustment)

County Project Coordinates
Northing <u>143024.5572</u>
Easting <u>523965.7476</u>
Date <u>2/04/00</u>

I hereby certify that this United States public land survey monument record is correct and complete to the best of my knowledge and belief.

*Larry D. Hoium* Date 6/27/06  
 \_\_\_\_\_, Anoka County Surveyor  
 Minnesota License Number 18165

# CERTIFICATE OF LOCATION OF GOVERNMENT CORNER

County of Anoka

State of Minnesota

NORTH 1/4 Corner of Sec. 26 Township 31 Range 23

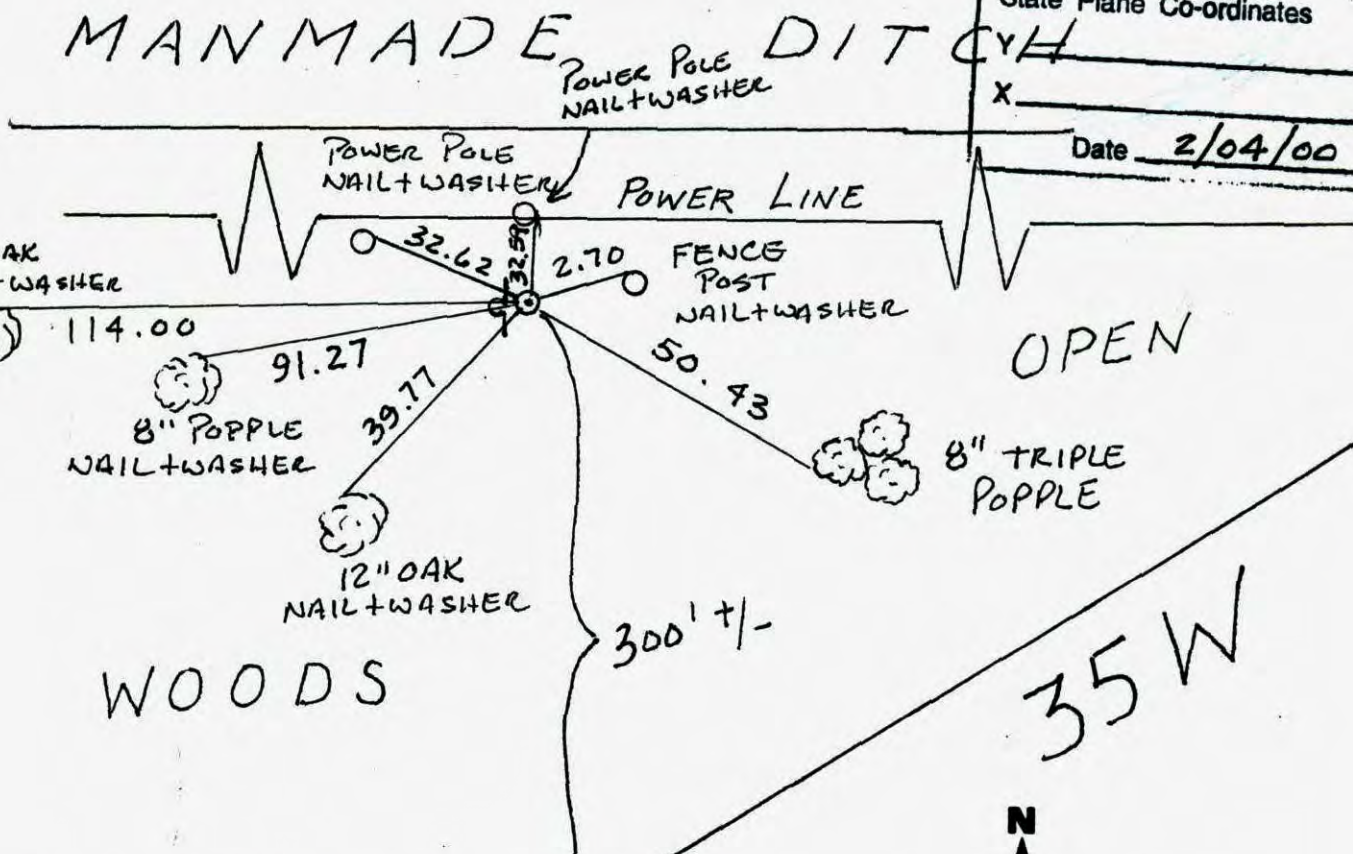
I hereby certify that on the 7 day of NOV., 1961, I found the described corner which was evidenced by CONCRETE MON.

and I further certify that to perpetuate the location of said corner, I did, at the exact location thereof, place a permanent marker consisting of CAST IRON MON., SIGN AND POST ON WEST SIDE

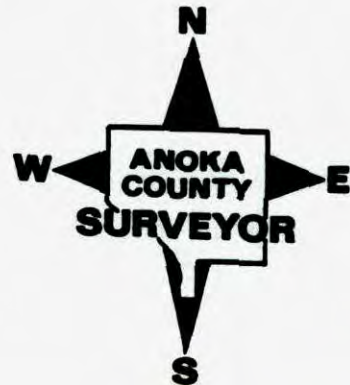
which reference or witness monuments are located in the manner following:

O P E N

N.A.D.	1983	Co-ordinates
County	Project	Co-ordinates
Northing		<u>143024.5572</u>
Easting		<u>523965.7476</u>
State Plane Co-ordinates		
X _____		
Date <u>2/04/00</u>		



Revised date	Revised date	Revised date
<u>8-1-90</u>		
<u>8-2-95</u>		
<u>2-4-00</u>		
<u>6-27-06</u>		



# CERTIFICATE OF LOCATION OF GOVERNMENT CORNER

County of Anoka

State of Minnesota

NORTH QTR. Corner of Sec. 26 Township 31 Range 23

I hereby certify that on the 7 day of Nov., 1961, I found the described corner which was evidenced by CONCRETE MON.

and I further certify that to perpetuate the location of said corner, I did, at the exact location thereof, place a permanent marker consisting of CAST IRON MON. SIGN AND POST ON ~~NORTHWEST~~ SIDE (FACING HWY.)

which reference or witness monuments are located in the manner following:

N.A.D.	1983	Co-ordinates
County	Project	Co-ordinates
Northing	143024.5572	
Easting	523965.7476	
State Plane Co-ordinates		
Y	_____	
X	_____	
Date _____		

RESET  
6-27-06

OPEN

2ND WOODEN  
POWERLINE  
POLES FROM  
W. SIDE HIGHWAY

MANMADE DITCH

WATER  
20'

8" OAK  
114.00  
8" POPPLE

P.P.  
NAIL,  
WASHER

32.62

FENCE POST  
NAIL, WASHER

POWER LINES

91.27

40.00  
39.77

50.43

OPEN

MON.  
BROKEN  
OFF

8" POPPLE  
NAIL, WASHER  
TRIPLE BIRCH

6-22-06  
BK-SS

WOODS

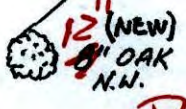
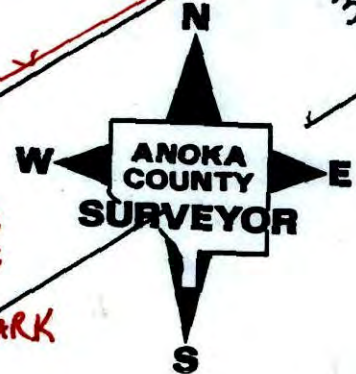
316.78

300' +/-

Revised date	Revised date	Revised date
8-1-90		
8-2-95		
2-4-00		

TOP BAR  
CYCLOPS  
FENCE

PUNCH MARK



# CERTIFICATE OF LOCATION OF GOVERNMENT CORNER

County of Anoka

State of Minnesota

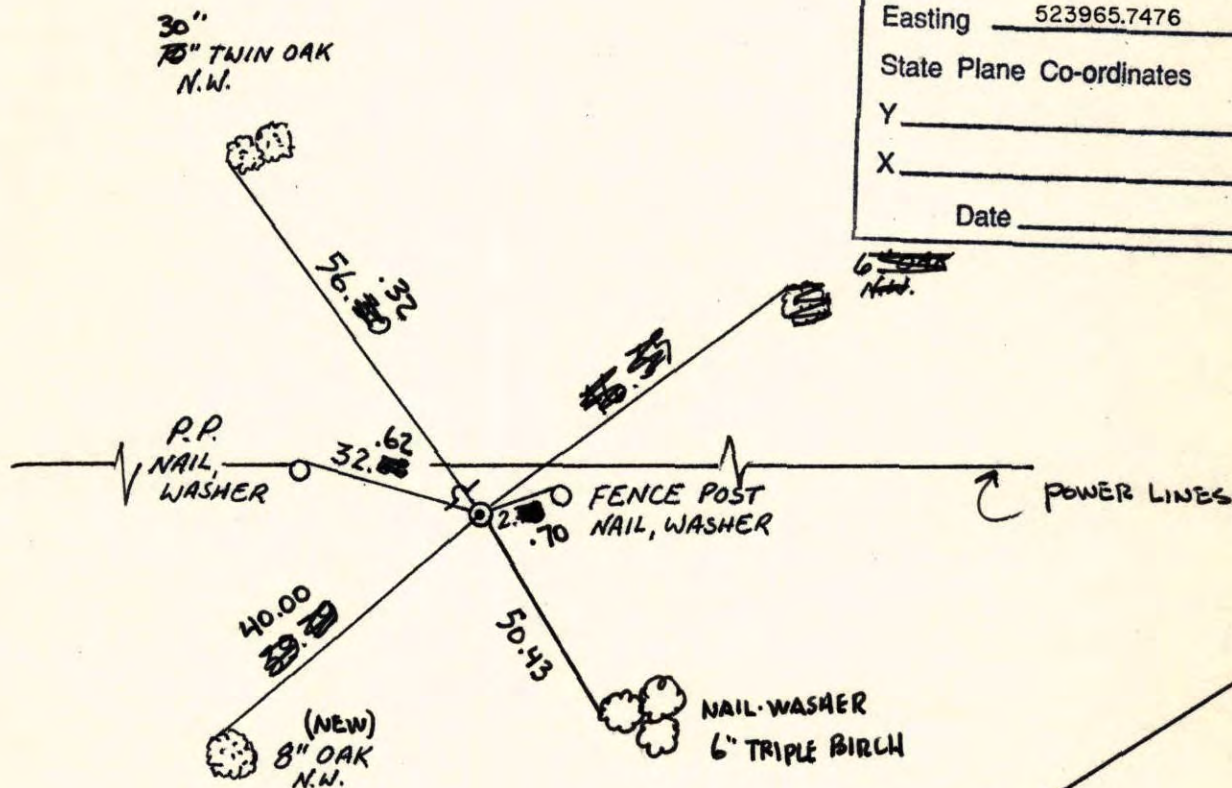
NORTH QTR. Corner of Sec. 26 Township 31 Range 23

I hereby certify that on the 7 day of Nov., 1961, I found the described corner which was evidenced by CONCRETE MON.

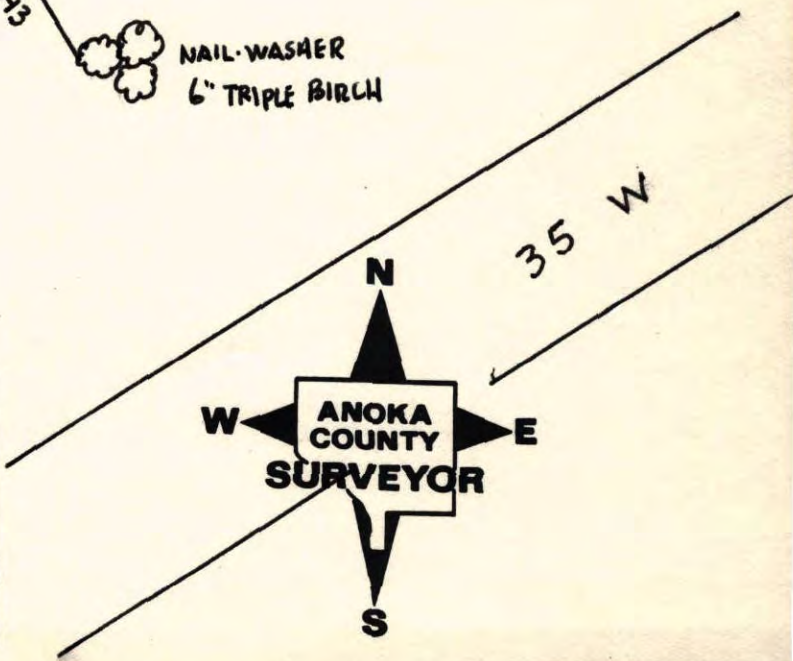
and I further certify that to perpetuate the location of said corner, I did, at the exact location thereof, place a permanent marker consisting of CAST IRON MON. SIGN AND POST ON NORTHWEST SIDE

which reference or witness monuments are located in the manner following:

N.A.D.	1983	Co-ordinates
County	Project	Co-ordinates
Northing		<u>143024.5572</u>
Easting		<u>523965.7476</u>
State Plane Co-ordinates		
Y		_____
X		_____
Date _____		

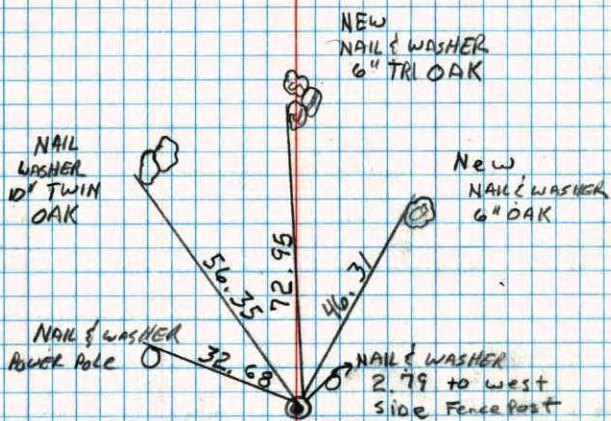


Revised date	Revised date	Revised date
8-1-90		
8-2-95		
2-4-00		



NORTH 1/4 corner sec 26 T 31 R 23

Retied Cast Iron monument



8-1-90  
O. KLEBSY  
M. ZIMMERMAN

N 1/4 Cor. Sec. 26-31-23

found Concrete Monument flush  
placed iron pipe on N. side

Replaced with Cast Iron April 3, 1962

November 7, 1961

M. D. Anderson  
L. M. Nair

10" Twin Oak  
Nail & Washer  
S. Side S. Tree

Transmission  
line pole  
Nail & Washer

7" Post  
Nail & Washer

9-28-71  
H. Larson  
M. Jensen  
F. WAKS

Tie Check  
July 23, 1968  
N. Livgard  
R. Olson

Tie Check  
May 20, 1975  
D. Dahl  
B. Sannerud

TIE CHECK  
22 AUG 77  
S. BRIEN  
J. STEPHENS

TIE CHECK  
6-3-80  
B. STEPHENS  
P. ROSS  
P. HORNBY

Retie 6/19/64

M. D. Anderson  
R. Carlson

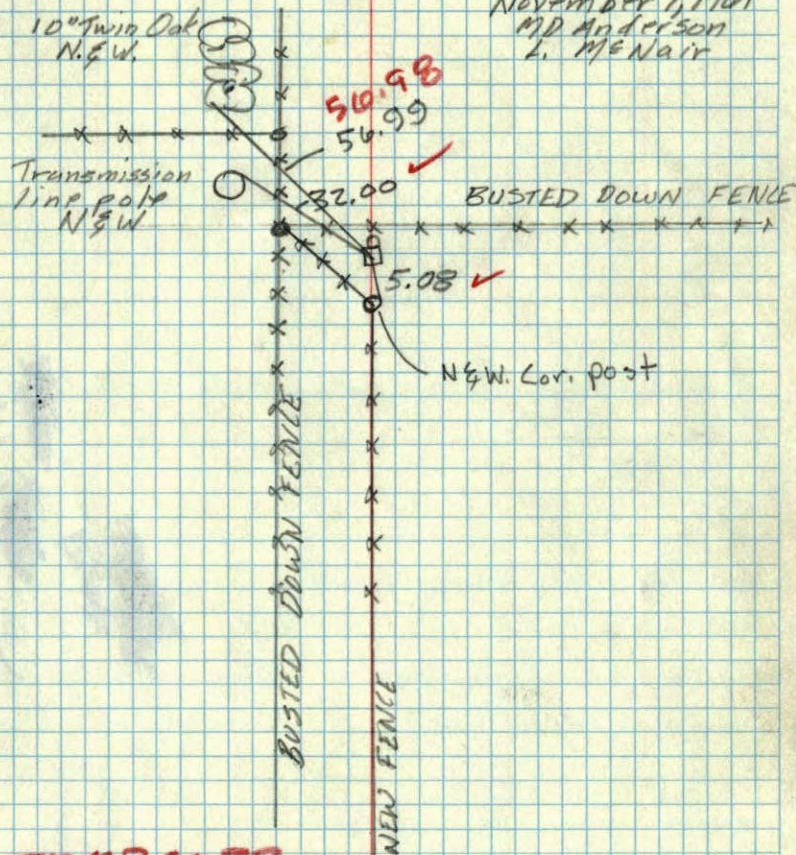
TEMPERATURE CORRECTED ROLAND W. ANDERSON  
AND HORIZONTALLY COUNTY SURVEYOR  
TAPED MEASUREMENTS ANOKA COUNTY, MINNESOTA

N<sup>1</sup>/<sub>4</sub> Cor. Sec. 26-31-23

found Concrete Mon. flush  
placed 1/2" Iron pipe on N. Side

Temp. 40

November 7, 1961  
M.D. Anderson  
L. McNaair

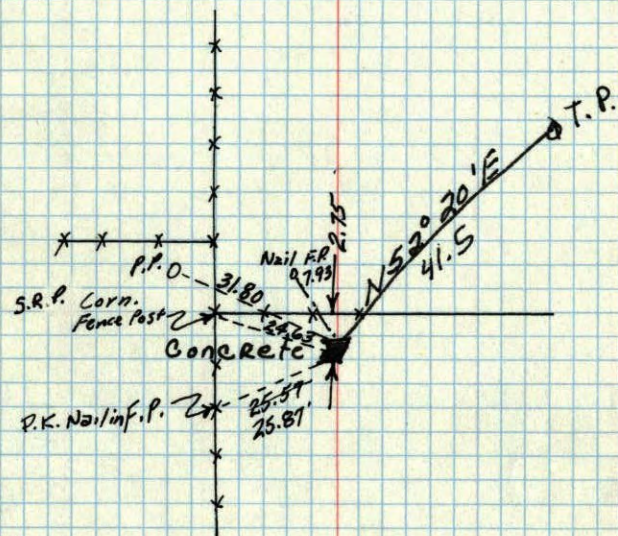


TEMP. CORR.  
- 90°

45 ✓

N<sup>1</sup>/<sub>4</sub> Cor. Sec. 26 T. 31 R. 23

Conc. Mon.



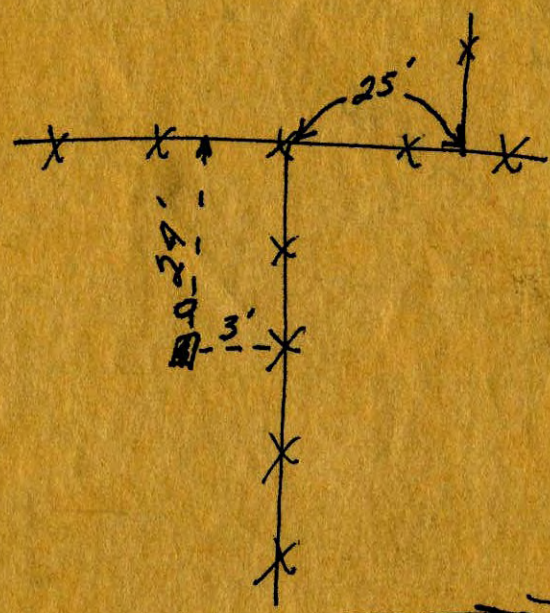
**Retired**

M. Hwy. D.  
Dashed lines are Re-ties  
by Northern Natural Gas Co.  
Jim Blouins  
6/16/59

Nov. 17, 1945  
CARTWR. 547

N.  $\frac{1}{4}$  cor. sec. 26 + 31 R. 23

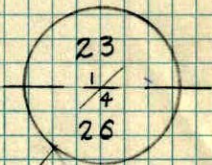
Uncovered Con. Mon. 2" below  
Dec. 1956



Con. directly E. of white painted  
fence Post. →

N.  $\frac{1}{4}$  SEC. 26, T. 31, R. 23

entered  
as RETIB



TBIN R 23 W

