

CERTIFICATE OF LOCATION OF GOVERNMENT CORNER

County of Anoka State of Minnesota

Northeast Corner of Sec. 27 Township 31 Range 23

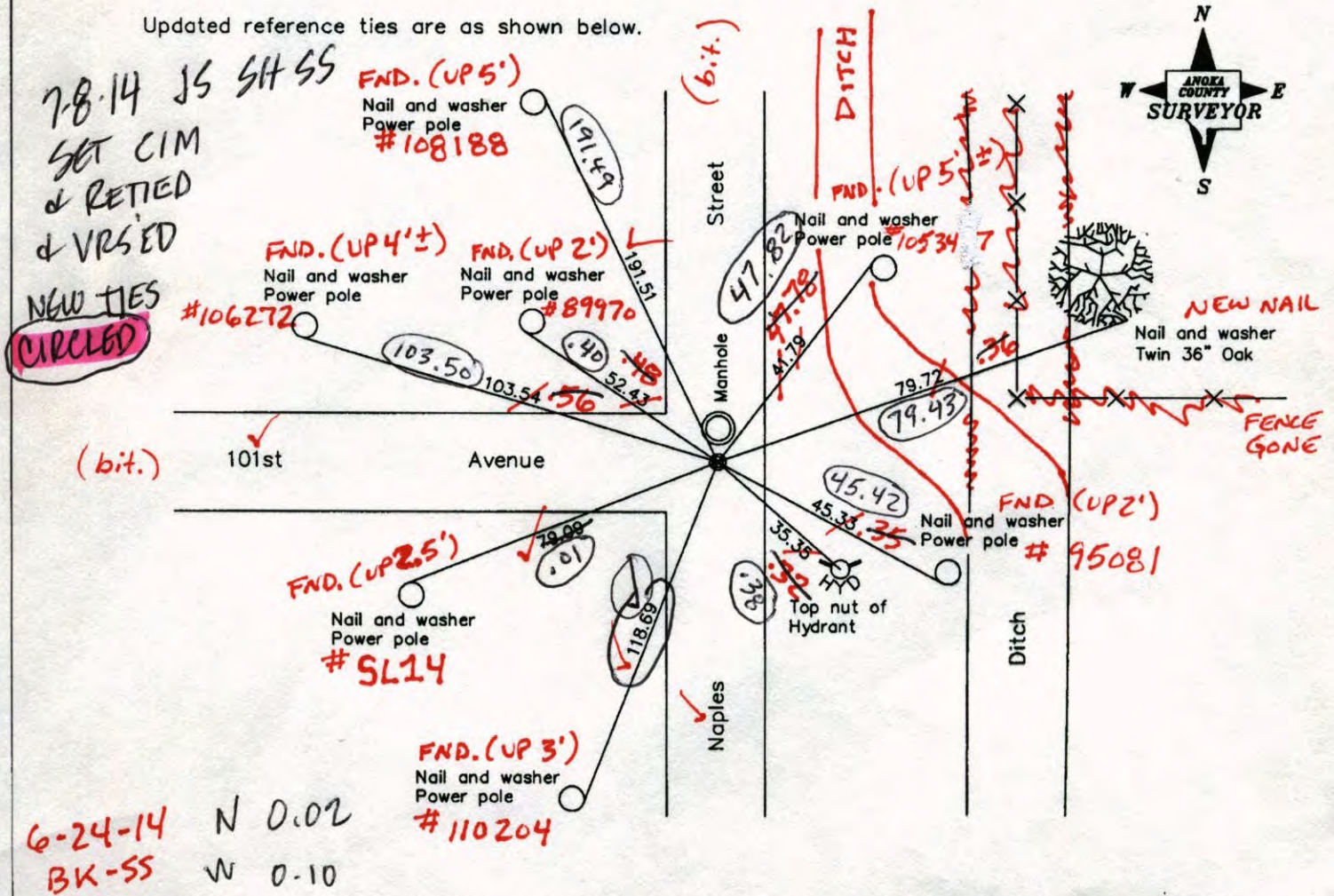
On the 28th day of September, 1971, the described corner was evidenced by a concrete monument

and to perpetuate the location of said corner, at the exact location thereof, a permanent marker was placed consisting of a 1/2" iron pipe and cap on south side of manhole

P.K. NAIL / NEEDS TO BE SET
CIM SET DOWN 0.1 DUE TO RUTS IN ROAD & MATCH RIM OF MH.

AND on the 12th day of June, 2006, said permanent marker was found and the ties were updated

Updated reference ties are as shown below.



Revised date	9/08/99
	7/13/05
	6/12/06

N.A.D. 1983 Coordinates (1996 Adjustment)	
County Project Coordinates	
Northing	143037.9495
Easting	521334.5342
Date	10/27/98

I hereby certify that this United States public land survey monument record is correct and complete to the best of my knowledge and belief.

Larry D. Holium Date 6/12/06

Larry D. Holium, Anoka County Surveyor

Minnesota License Number 18165

7-8-14 3DQ=0.05 N: 143037.9643
 VRS COORDS E: 521334.5057

CERTIFICATE OF LOCATION OF GOVERNMENT CORNER

County of Anoka

State¹ of Minnesota

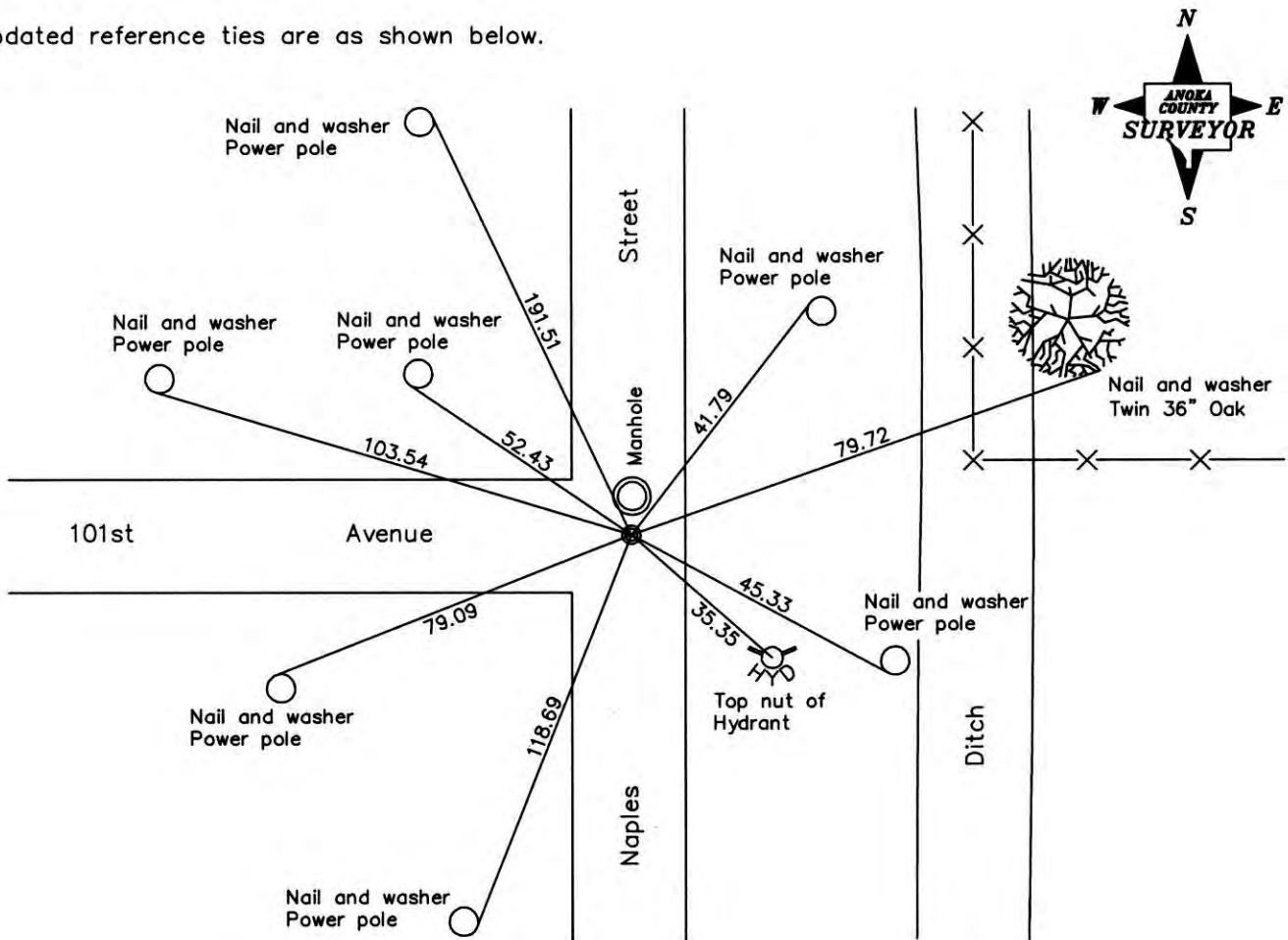
Northeast Corner of Sec. 27 Township 31 Range 23

On the 28th day of September, 1971, the described corner was evidenced by a concrete monument

and to perpetuate the location of said corner, at the exact location thereof, a permanent marker was placed consisting of a 1/2" iron pipe and cap on south side of manhole

AND on the 12th day of June, 2006, said permanent marker was found and the ties were updated

Updated reference ties are as shown below.



Revised date
9/08/99
7/13/05
6/12/06

N.A.D. 1983 Coordinates (1996 Adjustment)	
County Project Coordinates	
Northing	<u>143037.9495</u>
Easting	<u>521334.5342</u>
Date	<u>10/27/98</u>

I hereby certify that this United States public land survey monument record is correct and complete to the best of my knowledge and belief.

Larry D. Hoium Date 6/12/06

Larry D. Hoium, Anoka County Surveyor

Minnesota License Number 18165

CERTIFICATE OF LOCATION OF GOVERNMENT CORNER

County of Anoka

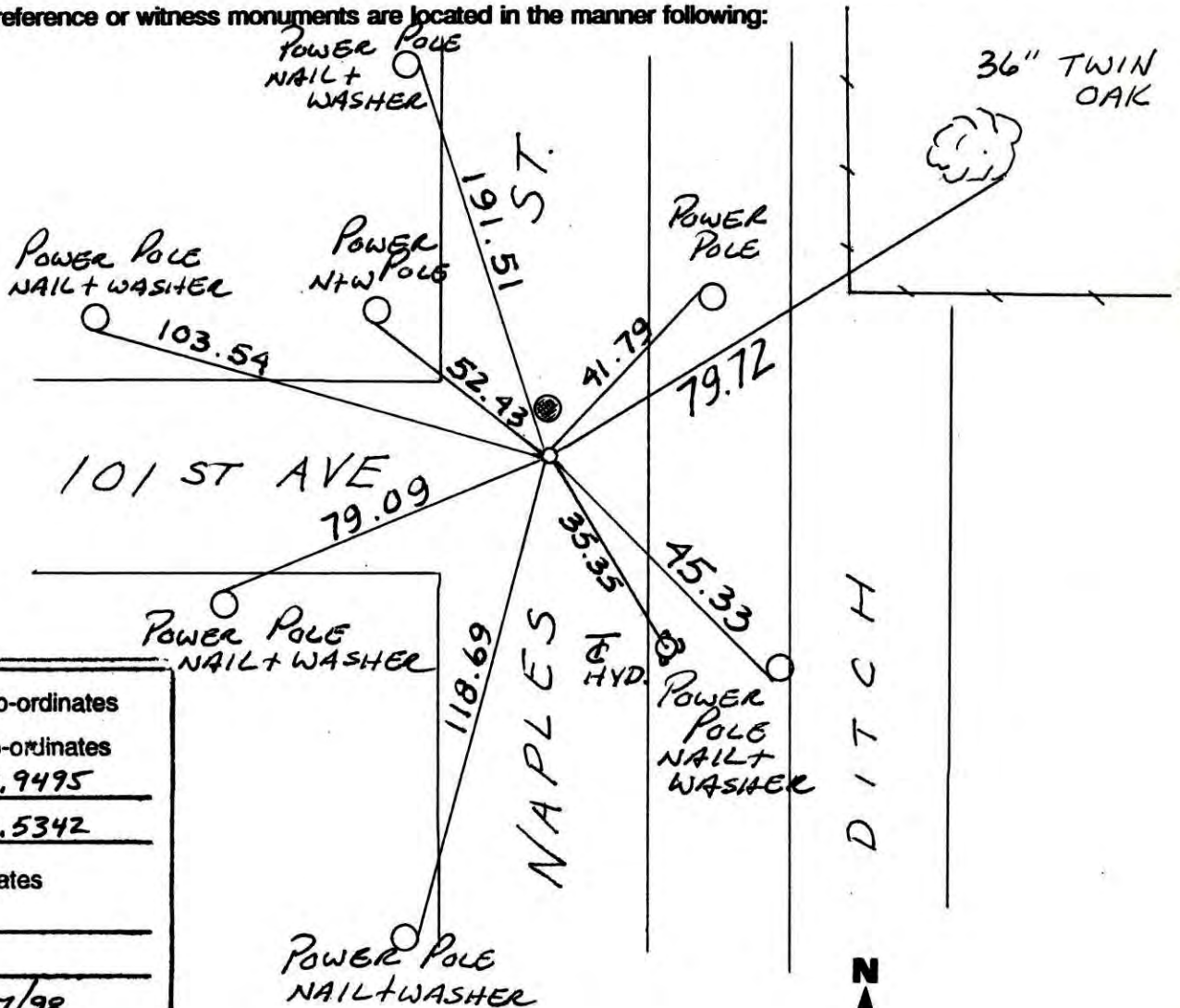
State of Minnesota

NORTHEAST Corner of Sec. 27 Township 31 Range 23

I hereby certify that on the ___ day of _____, 19 ___, I found the described corner which was evidenced by CONCRETE MON.

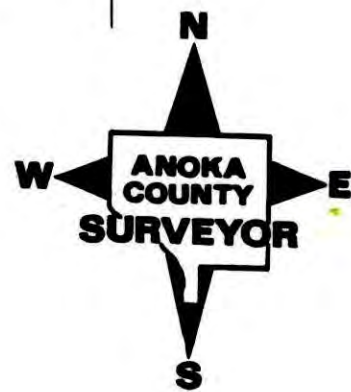
and I further certify that to perpetuate the location of said corner, I did, at the exact location thereof, place a permanent marker consisting of 1/2" IRON PIPE AND CAP
SOUTH SIDE OF MANHOLE

which reference or witness monuments are located in the manner following:



N.A.D.	1983	Co-ordinates
County	Project	Co-ordinates
Northing	<u>143037.9495</u>	
Easting	<u>521334.5342</u>	
State Plane Co-ordinates		
Y	_____	
X	_____	
Date	<u>10/27/98</u>	

Revised date	Revised date	Revised date
<u>6-3-86</u>		
<u>7-3-90</u>		
<u>6-9-95</u>		
<u>10-27-98</u>		
<u>9-8-99</u>		
<u>7-13-05</u>		
<u>6-12-06</u>		

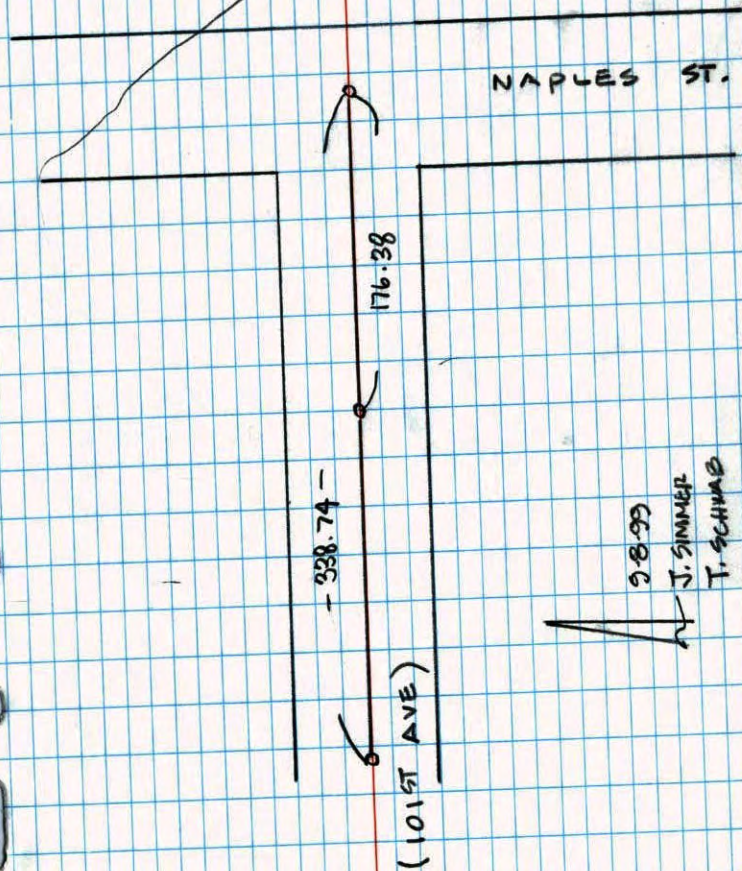


CONST. TIE

79

N.E. COR. SEC 27 T 31 R 23

TIED OUT 1/2" I.P. POSSIBLE
REMOVABLE NEEDED FOR CONST.



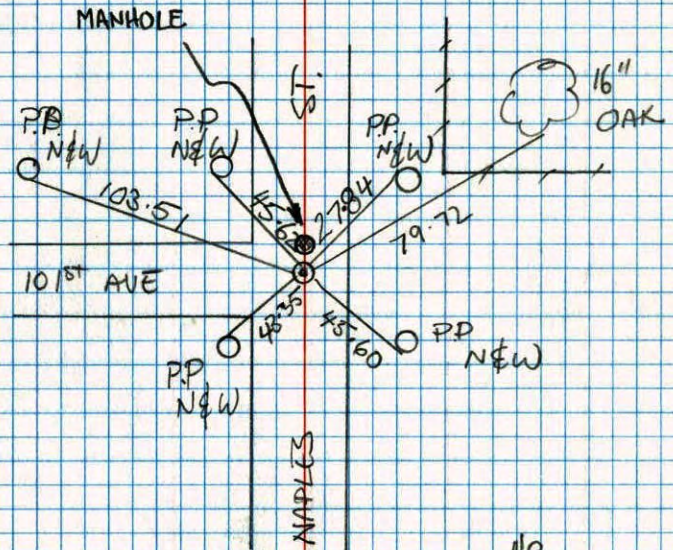
NO. 446

NATIONAL PRINTFAST

Page 79

REPLACE AND RETIE MONUMENT
NORTHEAST COR SEC 27 T 31 R 23

REPLACED 1/2" PIPE & CAP ON SOUTH
SIDE OF MANHOLE
IN BLACKTOP RD



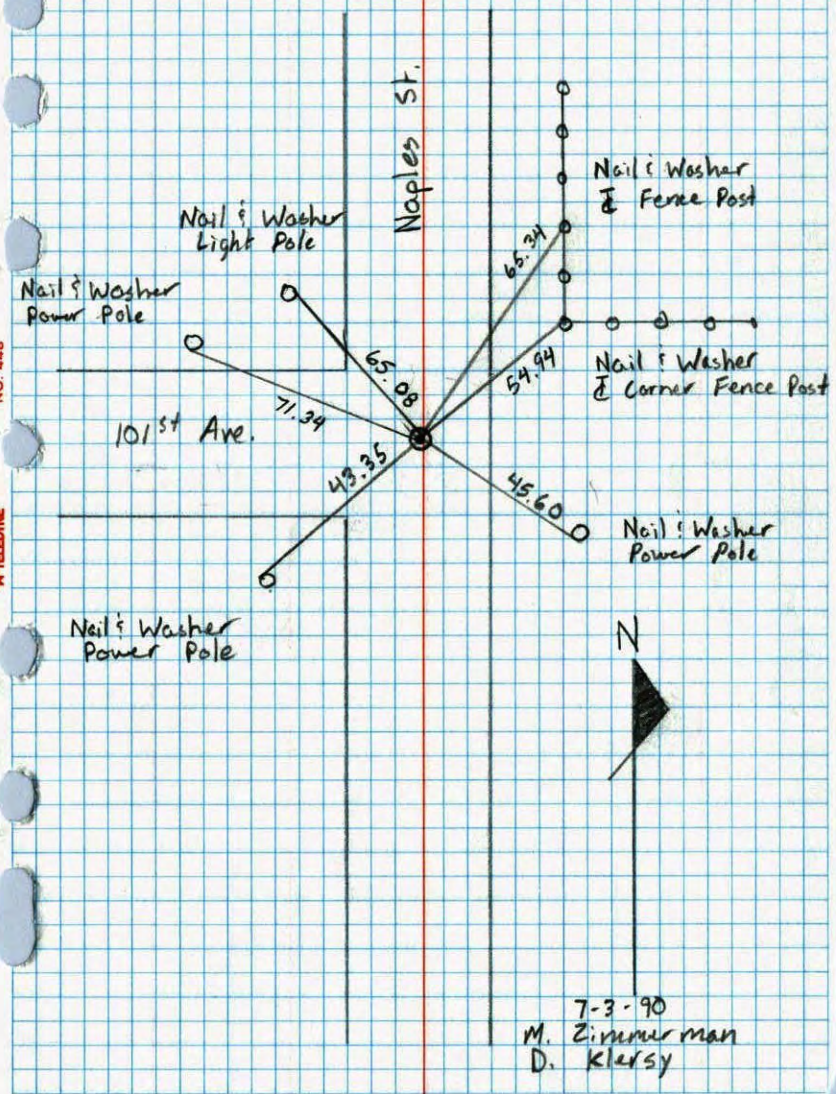
NO. 448

TELETYPE

B. KLEMZ
M. STEWART
JOSHUA ANDERSON
JASON ANDERSON

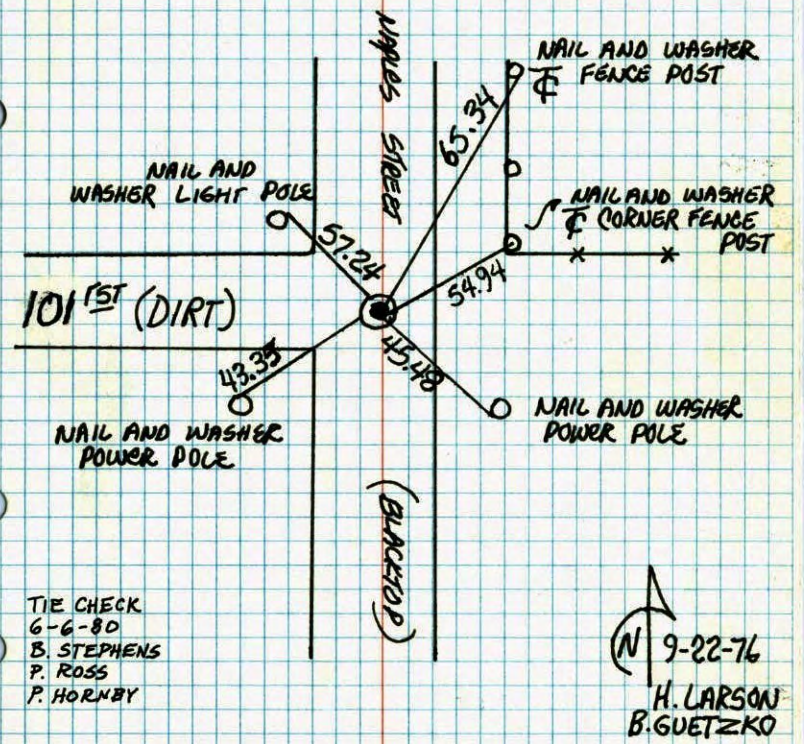


Northeast Corner sec. 27 T31 R23
Retied Cast Iron Monument



N.E. COR. SEC. 27 T.31 R.23

RESET CAST IRON MONUMENT AFTER CONSTRUCTION
C. IRON FLUSH WITH P.K. NAILS 2.0' N. AND E..

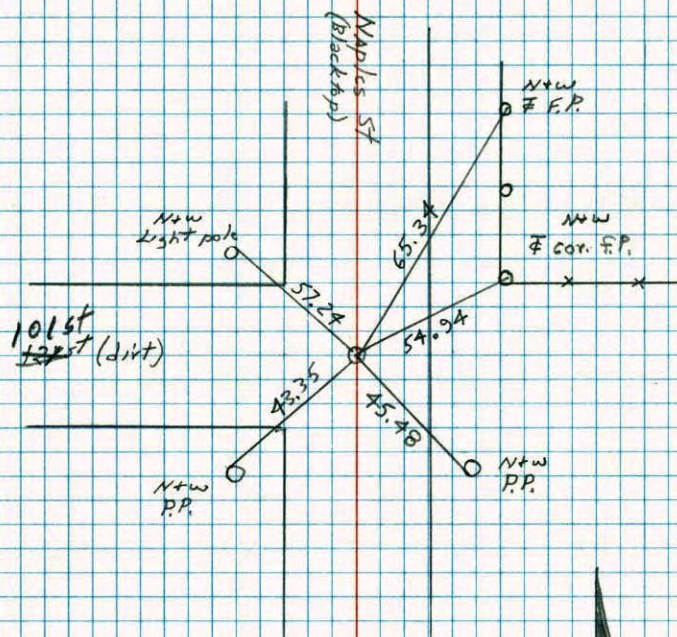


TEMPERATURE CORRECTED
AND HORIZONTALLY
TAPED MEASUREMENTS

ROLAND W. ANDERSON
COUNTY SURVEYOR
ANOKA COUNTY, MINNESOTA

NE Cor. Sec. 27 T 31 R 23

Reset cast iron monument after construction. C.I. Flush with P.K.s 2.00' N+E.



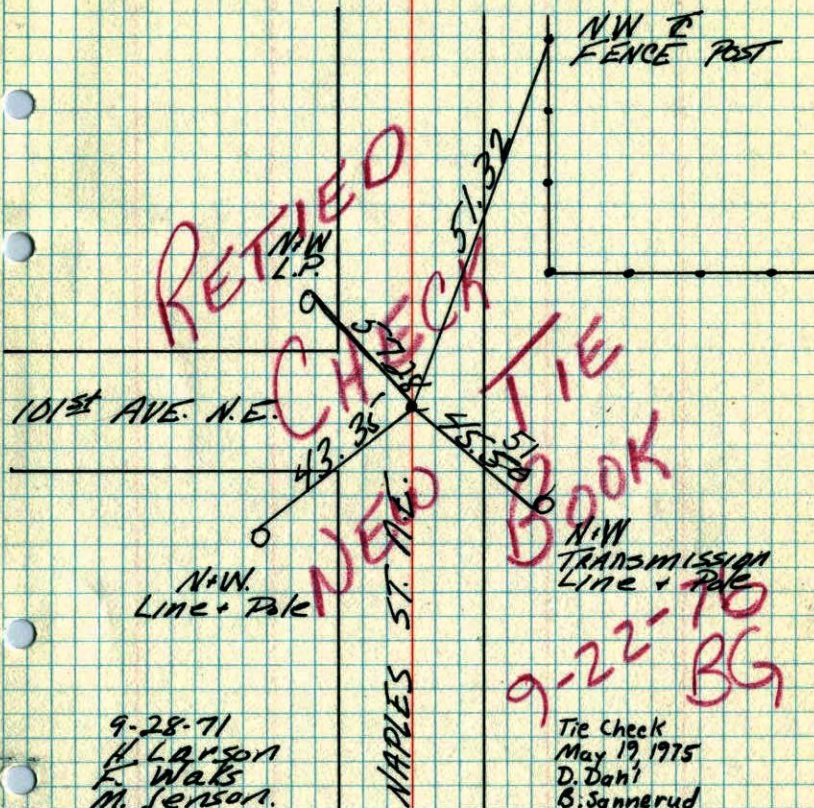
#7 55°
9-22-76
H. Larson
F. Waks
B. Guetzko

79

N.E. Cor Sec 27 T 31 R 23

Found 4" x 6" Cone Mon.

Set C.I. Mon down 0.5"



9-28-71
H. Larson
F. Waks
M. Jensen.

9-22-76
BG

Tie Check
May 19, 1975
D. Dahl
B. Sannerud

TEMPERATURE CORRECTED
AND HORIZONTALLY
TAPED MEASUREMENTS

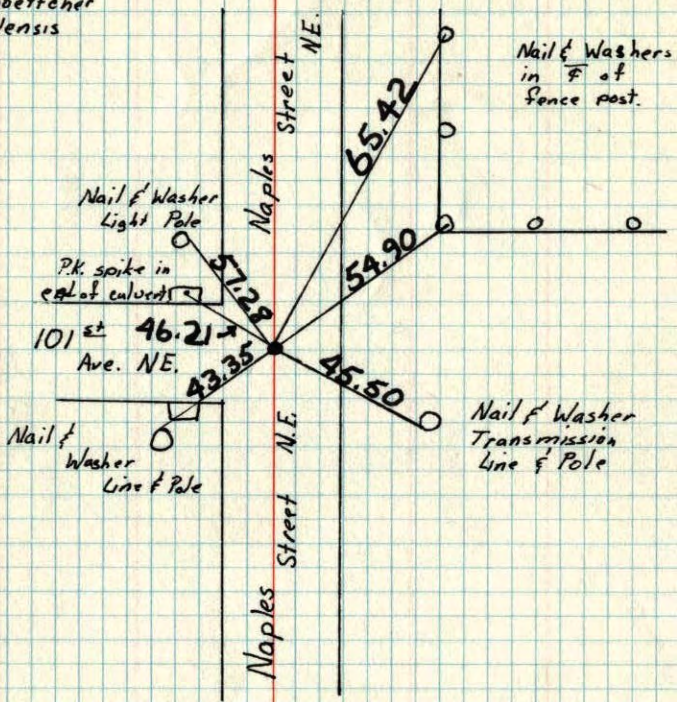
ROLAND W. ANDERSON
COUNTY SURVEYOR
ANOKA COUNTY, MINNESOTA

N.E. Cor. Sec. 27-T31-R23

Placed Cast Iron Monument down
0.5'± on 4x6" Concrete Monument.

Tie Check
May 19, 1971
R. Brien
J. Boetteher
D. Vensis

November 6, 1961
M. D. Anderson
G. Todd



TEMPERATURE CORRECTED ROLAND W. ANDERSON
AND HORIZONTALLY COUNTY SURVEYOR
TAPED MEASUREMENTS ANOKA COUNTY, MINNESOTA

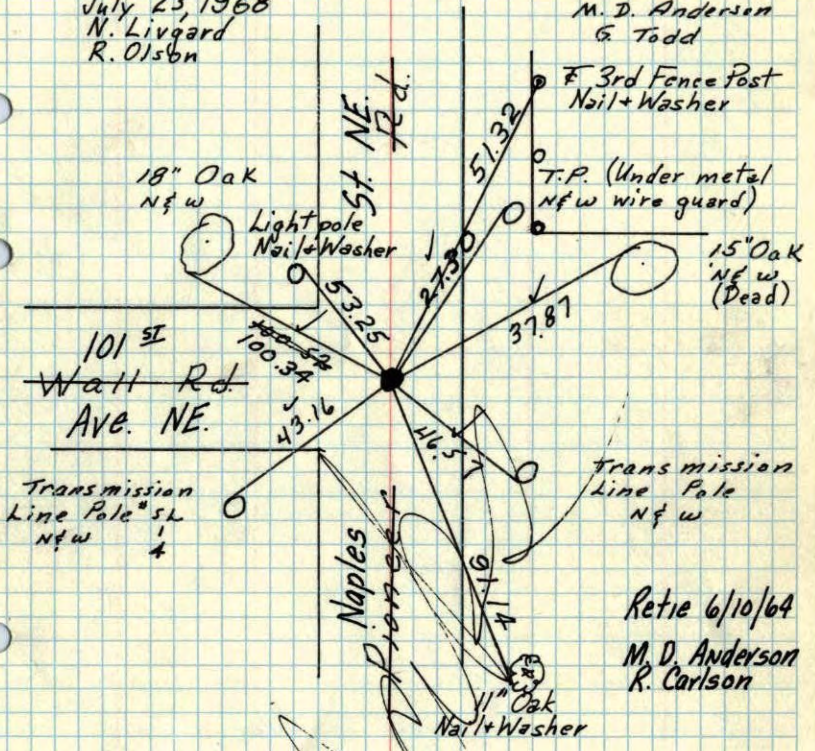
N.E. Cor. Sec. 27-31-23

found 4"x6" Conc. Mon. down 2"

Set Cast Iron Monument down 0.5'±

July 23, 1968
N. Livgard
R. Olson

6 Nov. 1961
M. D. Anderson
G. Todd

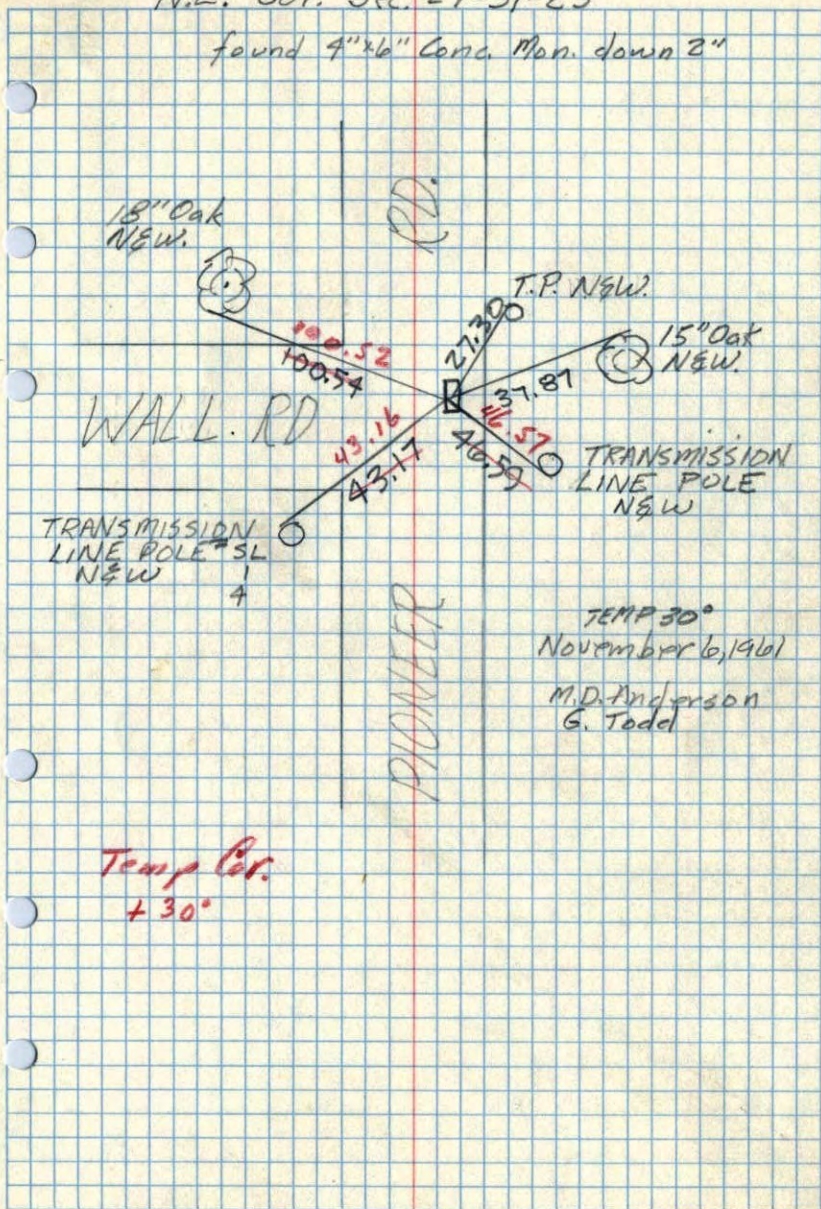


TEMPERATURE CORRECTED
AND HORIZONTALLY
TAPED MEASUREMENTS

ROLAND W. ANDERSON
COUNTY SURVEYOR
ANOKA COUNTY, MINNESOTA

N.E. Cor. Sec. 27-31-23

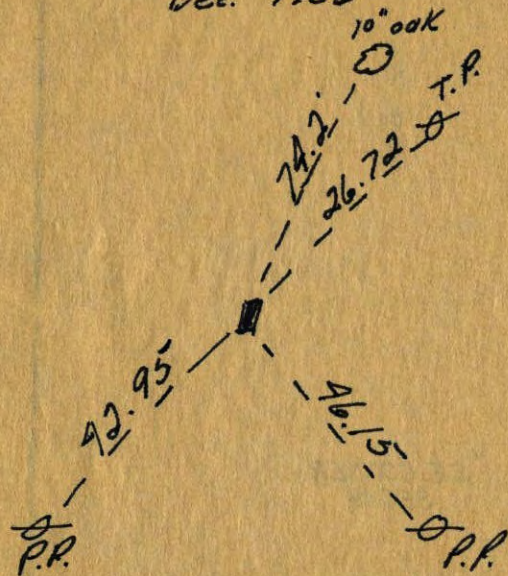
found 4"x6" Conc. Man. down 2"



TEMP 30°
November 6, 1961
M.D. Anderson
G. Todd

Temp Cor.
+ 30°

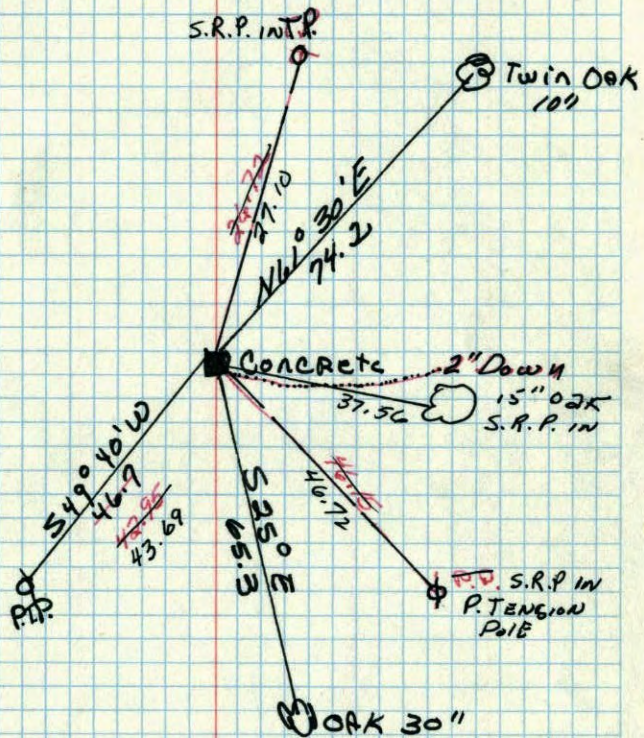
NW Cor. Sec. 26 + 31 R23
NE
Uncovered Con. Man. 2" below surface
Dec. 1956



NE
New Cor. of Sec 26 + 31 R23

4" Conc. Mon.

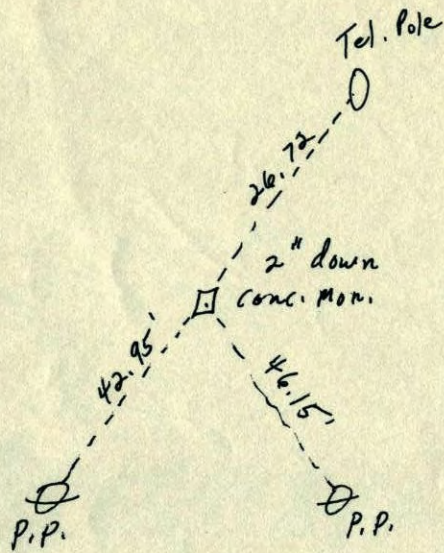
Retired
CHARLES O. GEORGI
Nov 7, 1955



Retired

Dec. 5, 1945
CARTWRIGHT

NE Corn Sec 26 31-23
27



From:
Charles O. Georgi
11-7-55

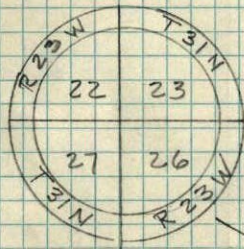
X

✓

NE SEC. 27, T. 31, R. 23



entire



4" CONC.
MON.

SRP INT.
27.10

SRP IN 15" OAK
37.56

POWER TENSION
POLE 43.69

SRP IN POWER
TENSION POLE
46.72