

CERTIFICATE OF LOCATION OF GOVERNMENT CORNER

County of Anoka State of Minnesota

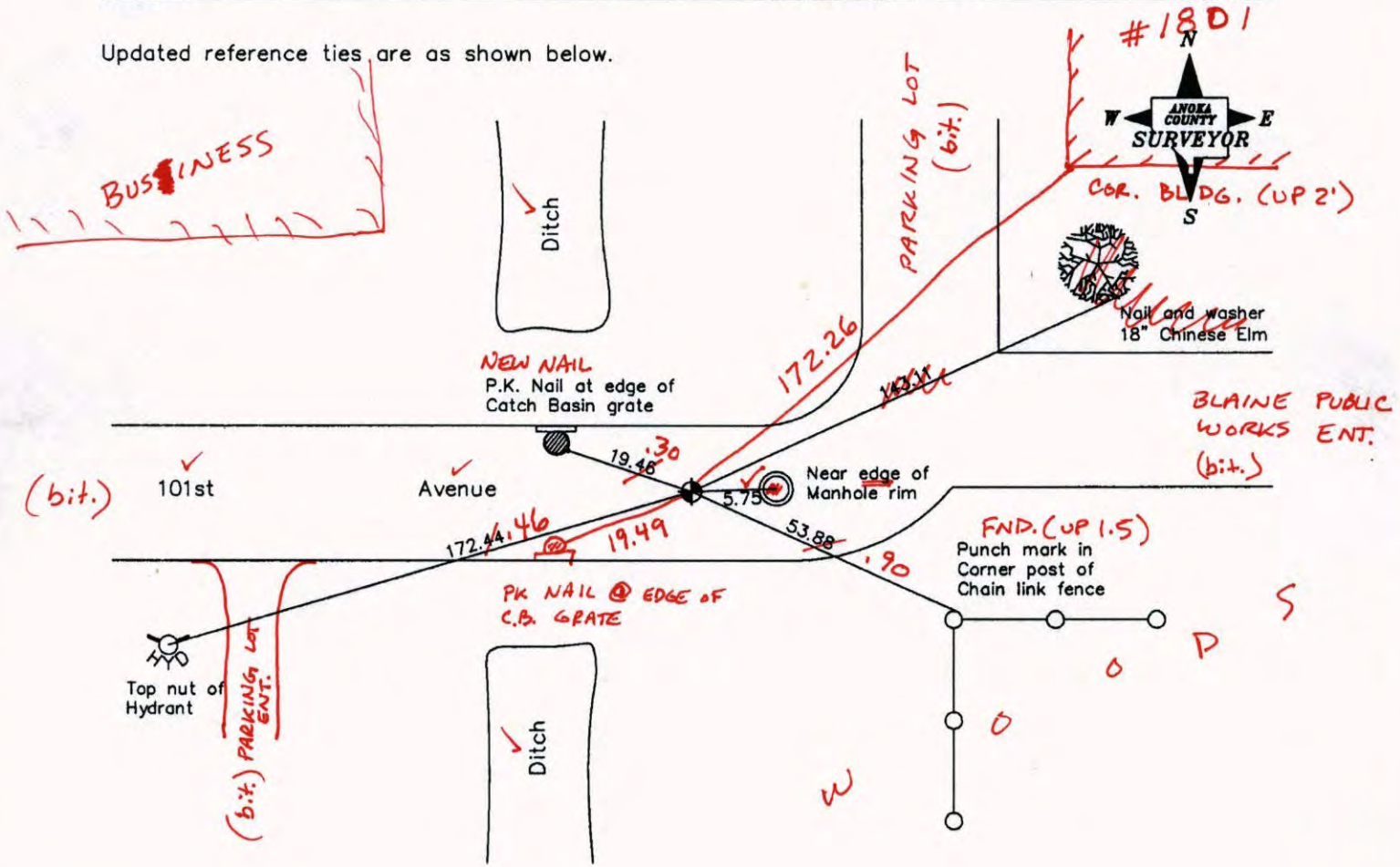
Southeast Corner of Sec. 20 Township 31 Range 23

On the 27th day of June, 1990, the described corner was evidenced by a 2" iron pipe up 1.2'± from ties by Carley

and to perpetuate the location of said corner, at the exact location thereof, a permanent marker was placed consisting of a cast iron monument

AND on the 21st day of June, 2006, said permanent marker was found and the ties were updated

Updated reference ties are as shown below.



6-13-14
BK-SS
WILD
T2000

Revised date
6/09/95
12/10/98
6/21/06

N.A.D. 1983 Coordinates (1996 Adjustment)	
County Project Coordinates	
Northing	143097.7388
Easting	510761.9652
Date	12/10/98

I hereby certify that this United States public land survey monument record is correct and complete to the best of my knowledge and belief.

Larry D. Hoium Date 6/21/06

Larry D. Hoium, Anoka County Surveyor

Minnesota License Number 18165

VRS 3DQ = 0.05 N = 143097.6718 E = 510761.9345

CERTIFICATE OF LOCATION OF GOVERNMENT CORNER

County of Anoka

State of Minnesota

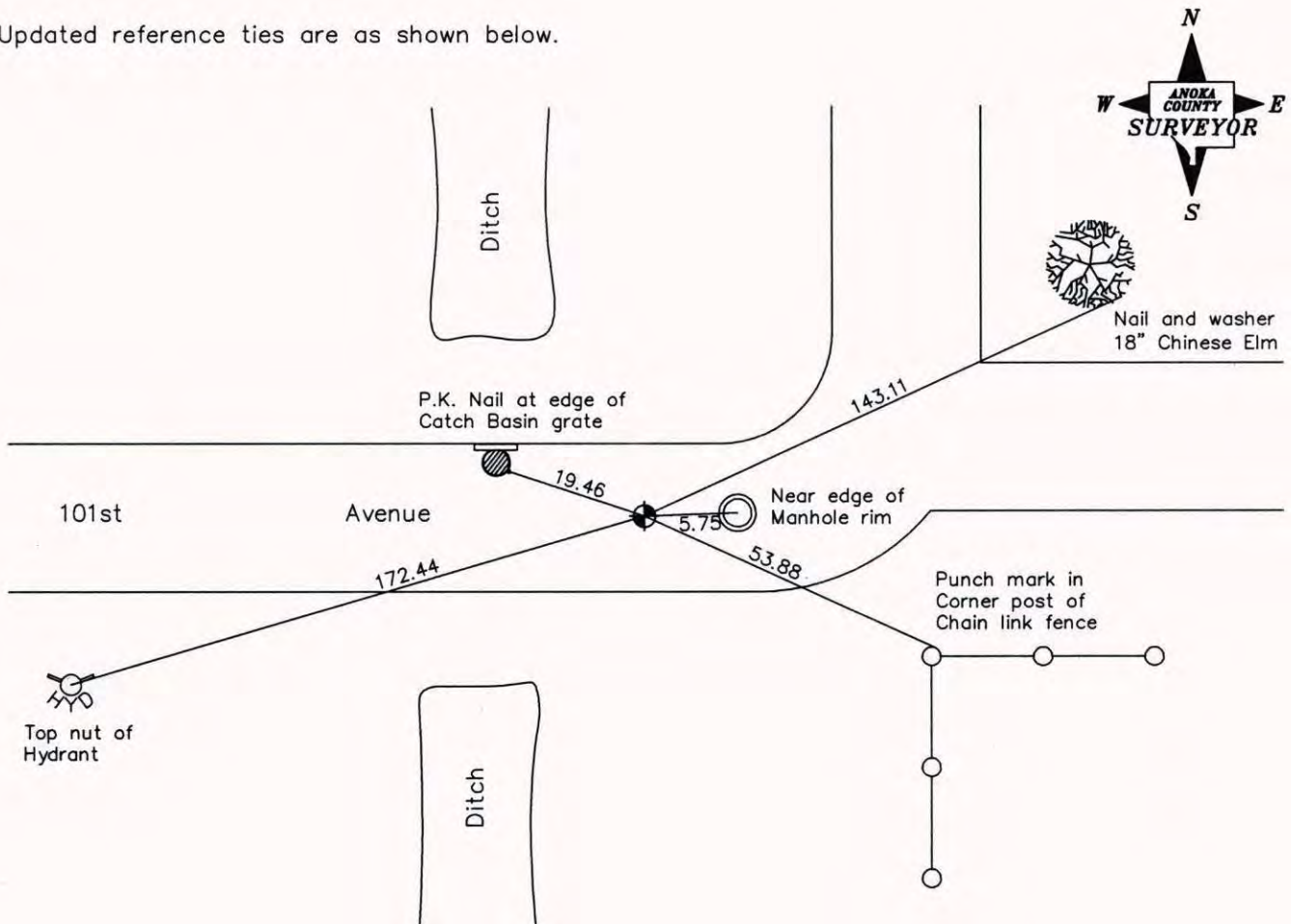
Southeast Corner of Sec. 20 Township 31 Range 23

On the 27th day of June, 1990, the described corner was evidenced by a 2" iron pipe up 1.2'± from ties by Carley

and to perpetuate the location of said corner, at the exact location thereof, a permanent marker was placed consisting of a cast iron monument

AND on the 21st day of June, 2006, said permanent marker was found and the ties were updated

Updated reference ties are as shown below.



Revised date

6/09/95
12/10/98
6/21/06

**N.A.D. 1983 Coordinates
(1996 Adjustment)**

County Project Coordinates	
Northing	<u>143097.7388</u>
Easting	<u>510761.9652</u>
Date	<u>12/10/98</u>

I hereby certify that this United States public land survey monument record is correct and complete to the best of my knowledge and belief.

Larry D. Hoium Date 6/21/06

Larry D. Hoium, Anoka County Surveyor

Minnesota License Number 18165

CERTIFICATE OF LOCATION OF GOVERNMENT CORNER

County of Anoka

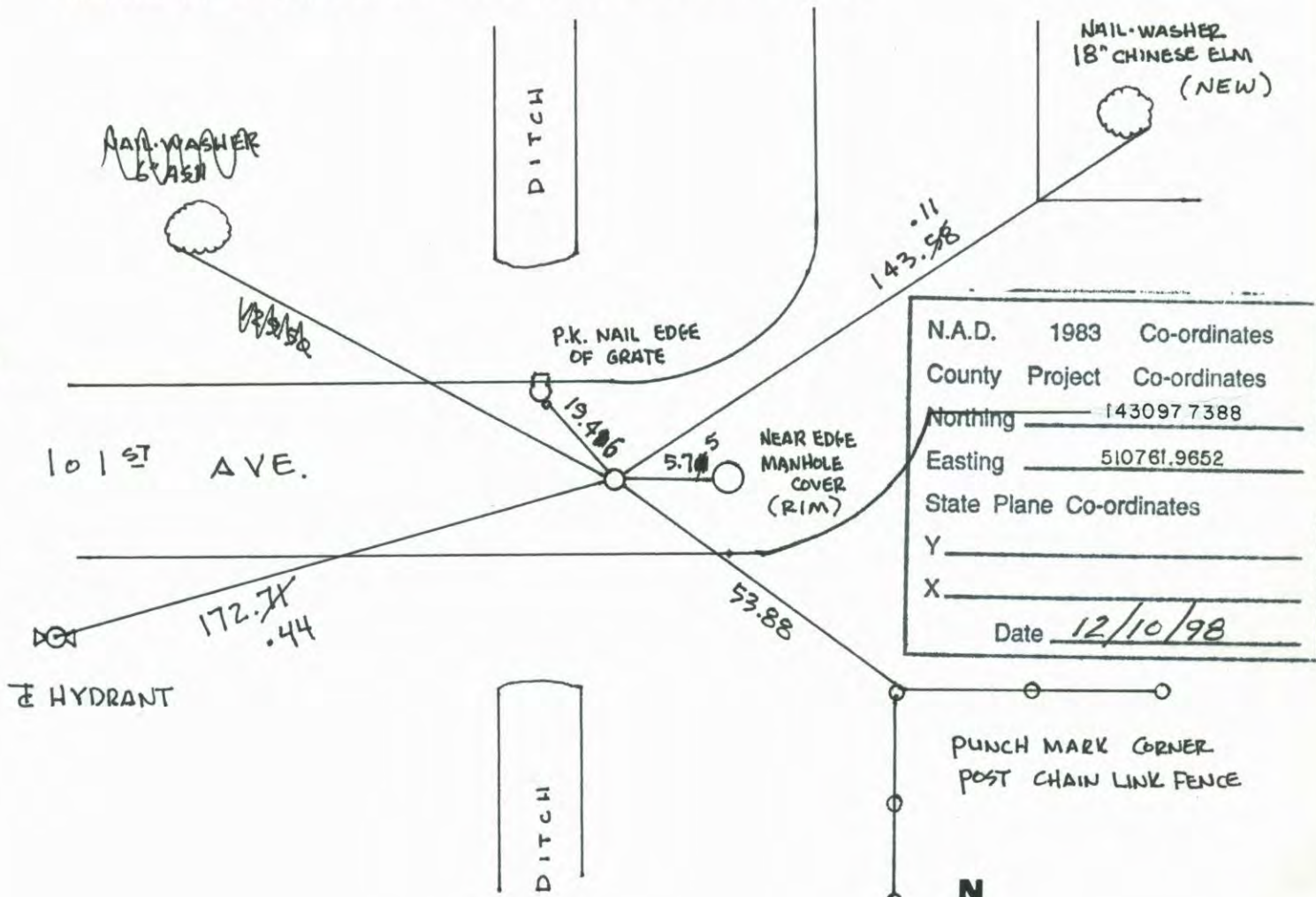
State of Minnesota

SOUTHEAST Corner of Sec. 20 Township 31 Range 23

I hereby certify that on the 27TH day of JUNE, 19 90, I found the described corner which was evidenced by 2" I.P. UP 1.2'± FROM TIES BY CARLEY

and I further certify that to perpetuate the location of said corner, I did, at the exact location thereof, place a permanent marker consisting of CAST IRON MONUMENT

which reference or witness monuments are located in the manner following:



Revised date	Revised date	Revised date
6-27-90		
6-9-95		
12-10-98		
6-21-06		



CERTIFICATE OF LOCATION OF GOVERNMENT CORNER

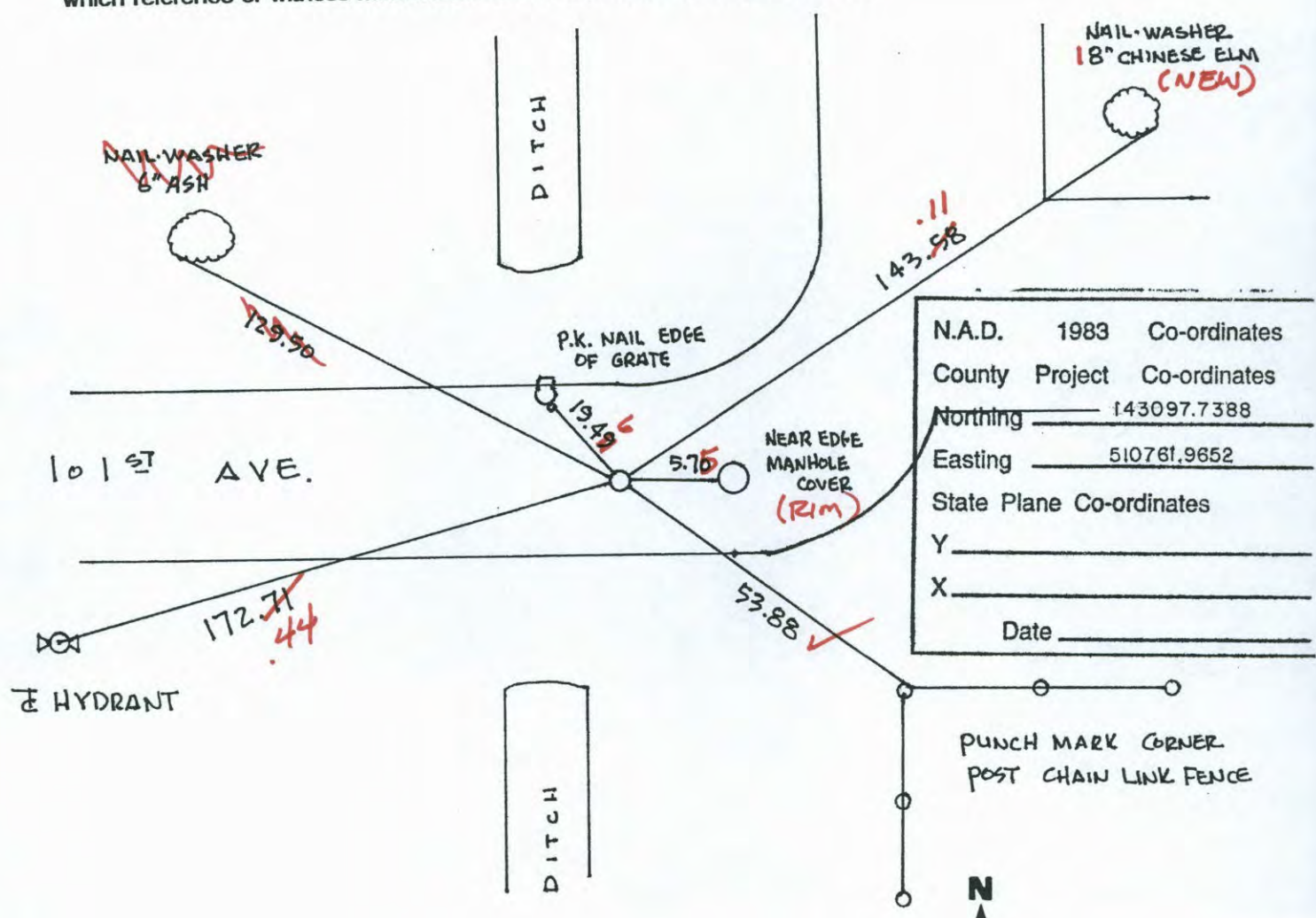
County of Anoka State of Minnesota

SOUTHEAST Corner of Sec. 20 Township 31 Range 23

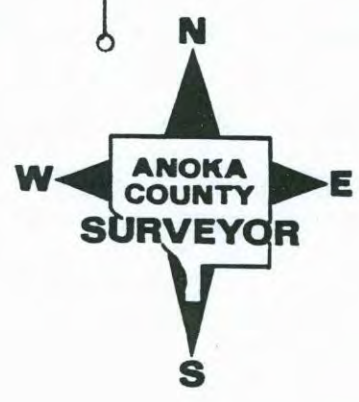
I hereby certify that on the 27TH day of JUNE, 1990, I found the described corner which was evidenced by 2" I.P. UP 1.2'I FROM TIES BY CARLEY

and I further certify that to perpetuate the location of said corner, I did, at the exact location thereof, place a permanent marker consisting of CAST IRON MONUMENT

which reference or witness monuments are located in the manner following:



Revised date	Revised date	Revised date
6-27-90		
6-9-95		
12-10-98		
6-21-06		



SOUTHEAST COR. SEC 20 T 31 R 23

RETIRED CAST IRON MONUMENT

12-10-98

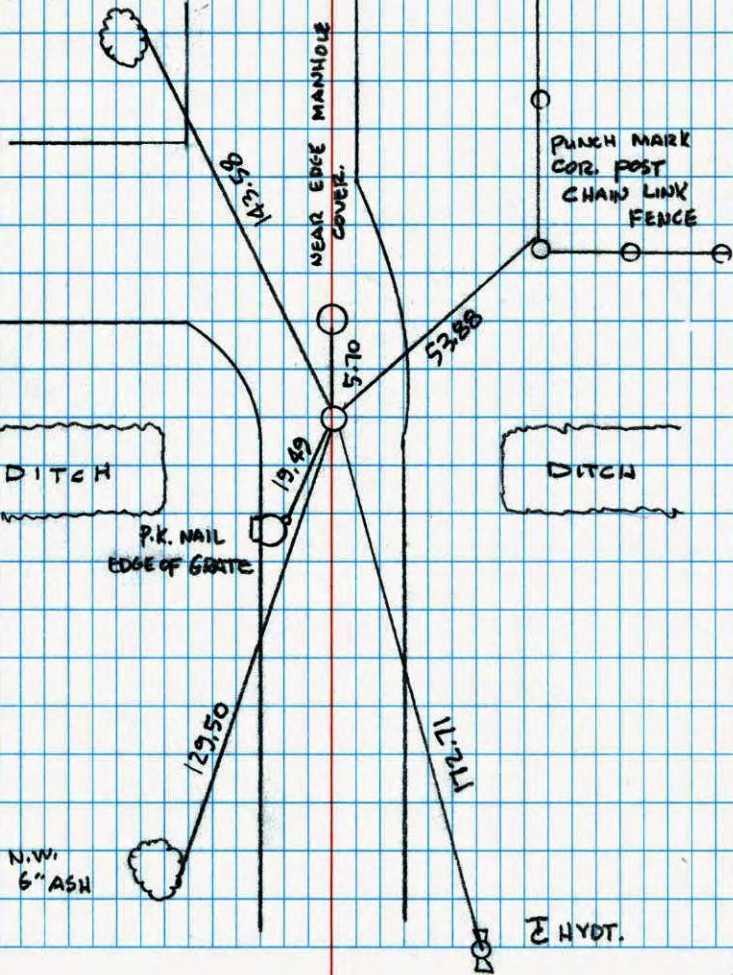
J. SIMMER

B. KLEMZ

NO. 446

NATIONAL PRIORITFAST

N.W. 8" CHINESE ELM



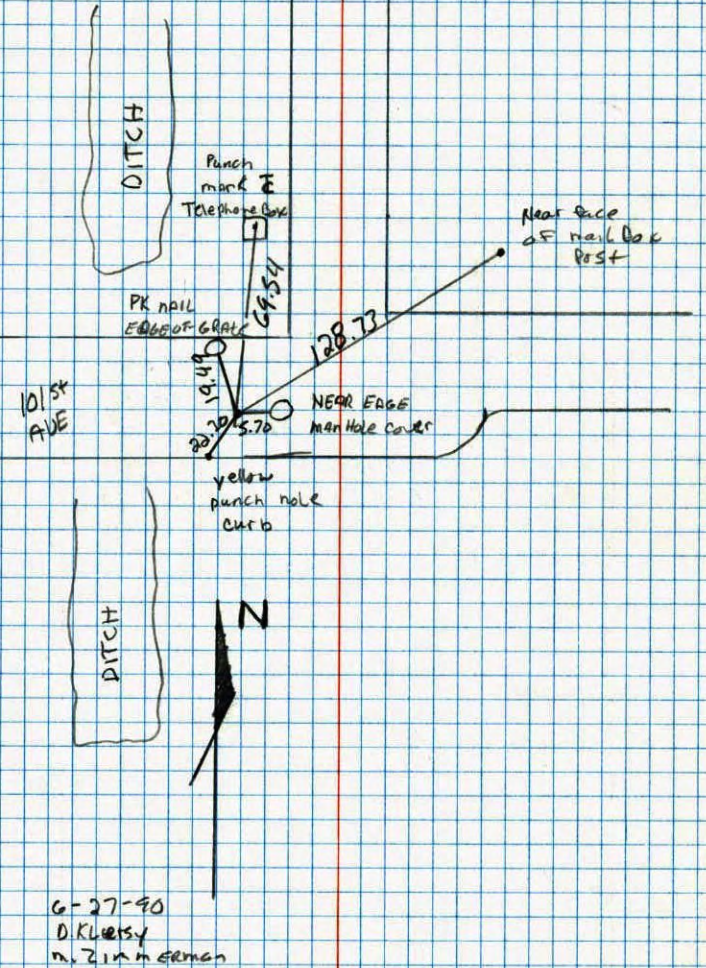
E HYOT.

Southeast corner Sec 20 T 31 R 23

Retired cast iron monument.

NO. 448

TELEPHONE

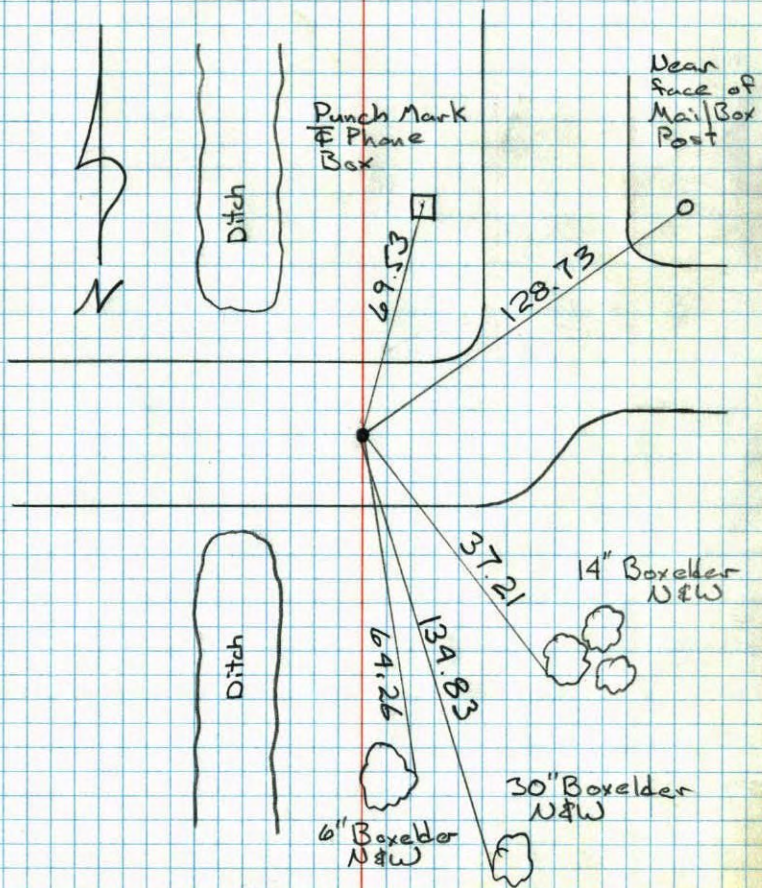


G-27-90
D. KLEMSY
M. ZIMMERMAN

S.E. Cor. Sec. 20 T-31 R-23

Reset C.P. After Construction, P.K.s 200

N&E Tape #1 6-2-83
85° P. Ross
B. Nicholas



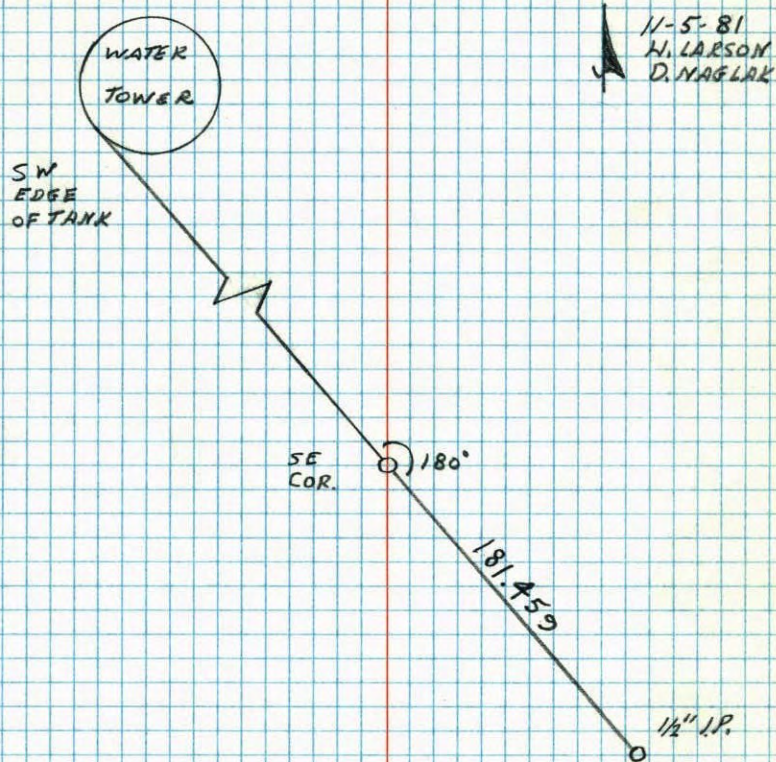
NO. 448

TELEPHONE

RE-SET

SE CORNER SECTION 20 T31 R23

TRANSIT TIE FOR CONSTRUCTION

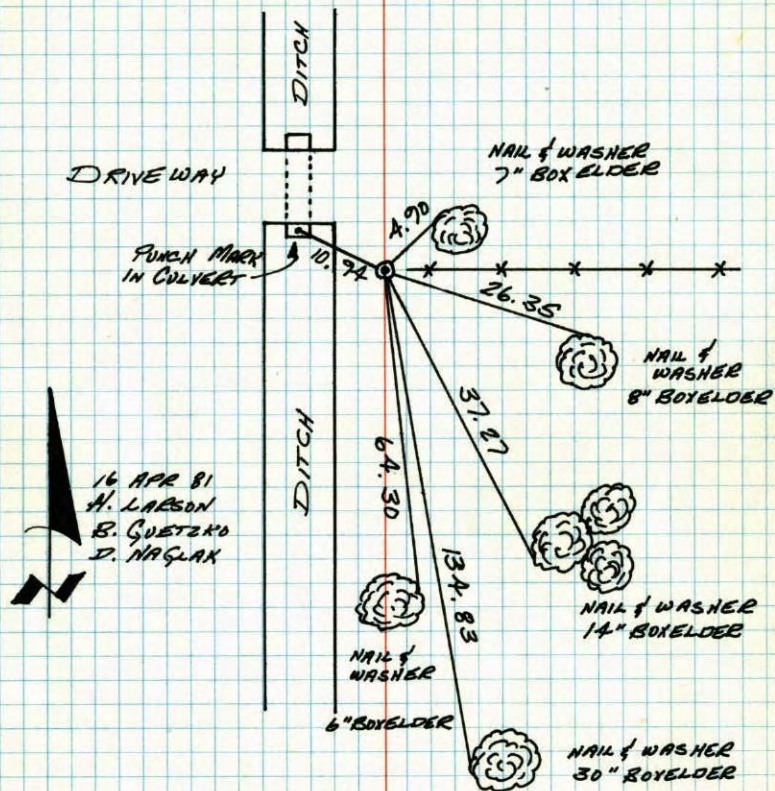


NO. 448

TELEPHONE

S.E. CORNER SECTION 20-T31-R23

RESET CORNER FROM AREA RESURVEY AND PLAT OF
"BLAINE INDUSTRIAL SQUARE": SET CAST IRON
MONUMENT FLUSH WITH SIGN AND POST ON SOUTH
SIDE.



16 APR 81
H. LARSON
B. GUETZKO
D. NAGLAK

TEMPERATURE CORRECTED
AND HORIZONTALLY
TAPED MEASUREMENTS

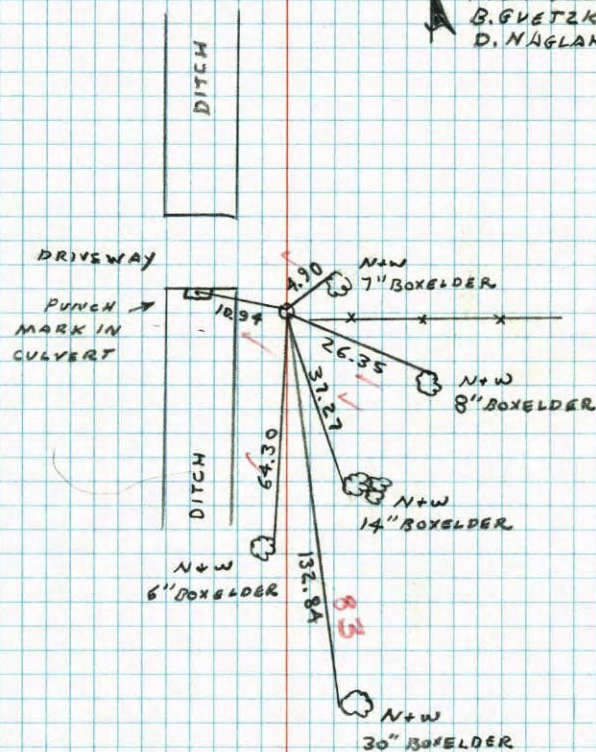
ROLAND W. ANDERSON
COUNTY SURVEYOR
ANOKA COUNTY, MINNESOTA

SE. CORNER SECTION 20 T31 R23

RESET CORNER FROM AREA RESURVEY AND
PLAT OF "BLAINE INDUSTRIAL SQUARE"

SET CAST IRON MONUMENT FLUSH WITH
SIGN & POST ON SOUTH SIDE.

1 55°
4-16-81
H. LARSON
B. GUETZKO
D. NAGLAK

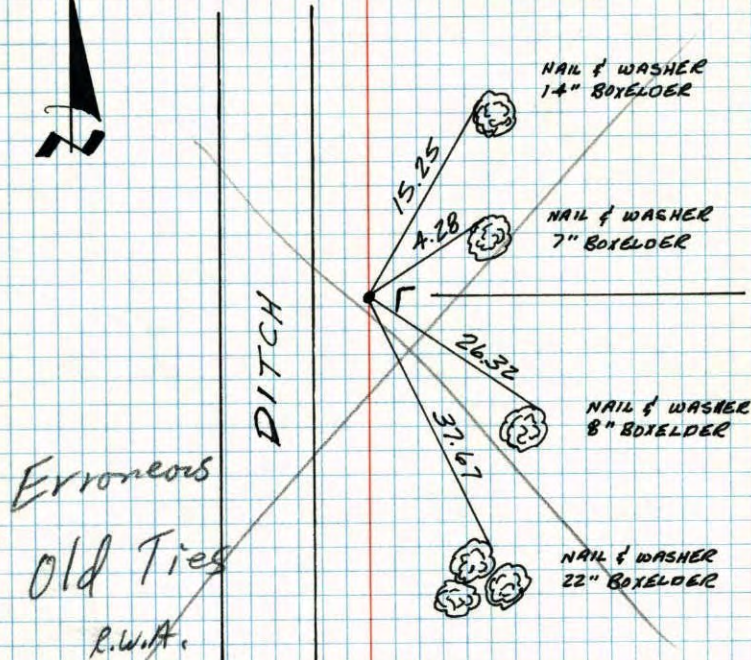


TEMPERATURE CORRECTED
AND HORIZONTALLY
TAPED MEASUREMENTS

ROLAND W. ANDERSON
COUNTY SURVEYOR
ANOKA COUNTY, MINNESOTA

S.E. CORNER SECTION 20-T31-R23

FOUND 2" IRON PIPE UP 1.2' FROM TIES BY CARLEY.

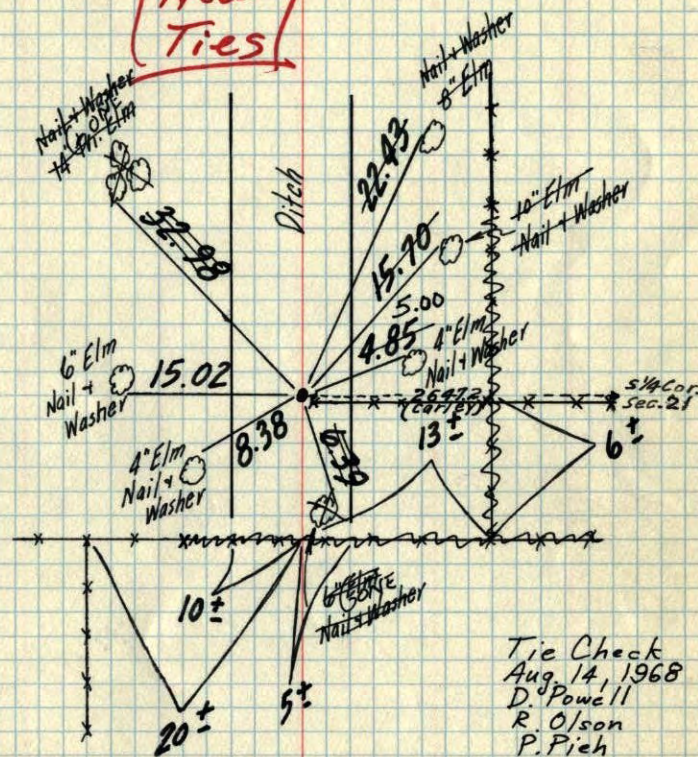
17 SEP 64
M.D. ANDERSON
G. TODDPIPE IS LEARNING N.W. AND IS UP 1". OLD TIES
GONE. ALL NEW TIES SET.18 JUN 80
B. STEPHENS
P. ROSS
P. HORNBY

(see correct ties)

TEMPERATURE CORRECTED
AND HORIZONTALLY
TAPED MEASUREMENTSROLAND W. ANDERSON
COUNTY SURVEYOR
ANOKA COUNTY, MINNESOTA

S.E. Cor. Sec. 20, T 31, R. 23

Found 2" Iron Pipe up 1.2' from ties by Carley

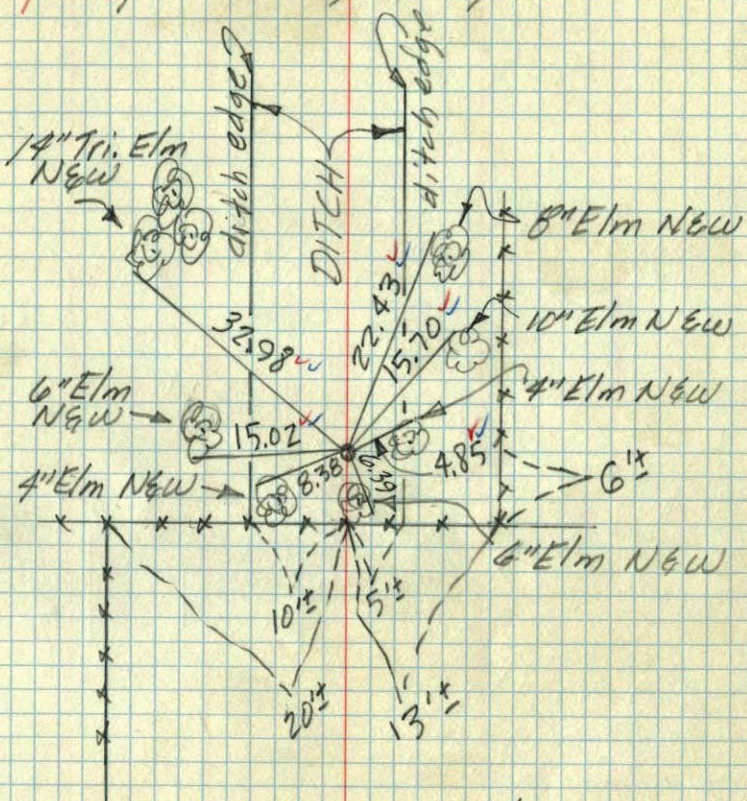
See
New
TiesTIE CHECK
19 AUG 77
S. BRIEN
J. STEPHENSTie Check
Aug 14, 1968
D. Powell
R. Olson
P. Pich

Sept 17, 64

M. D. Anderson
G. ToddTEMPERATURE CORRECTED
AND HORIZONTALLY
TAPED MEASUREMENTSROLAND W. ANDERSON
COUNTY SURVEYOR
ANOKA COUNTY, MINNESOTA

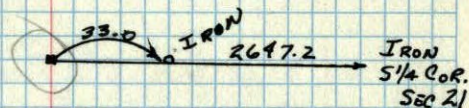
S.E. Cor. Sec. 20-T31-R23

found 2" Iron pipe up 1.2'±
found from ties by Carley



Sept. 17, 1964
M.D. Anderson
G. Todd
Temp 78°
Tape #1

51
SE Cor. SEC. 20, T31, R23



CARLEY