

CERTIFICATE OF LOCATION OF GOVERNMENT CORNER

County of Anoka

State of Minnesota

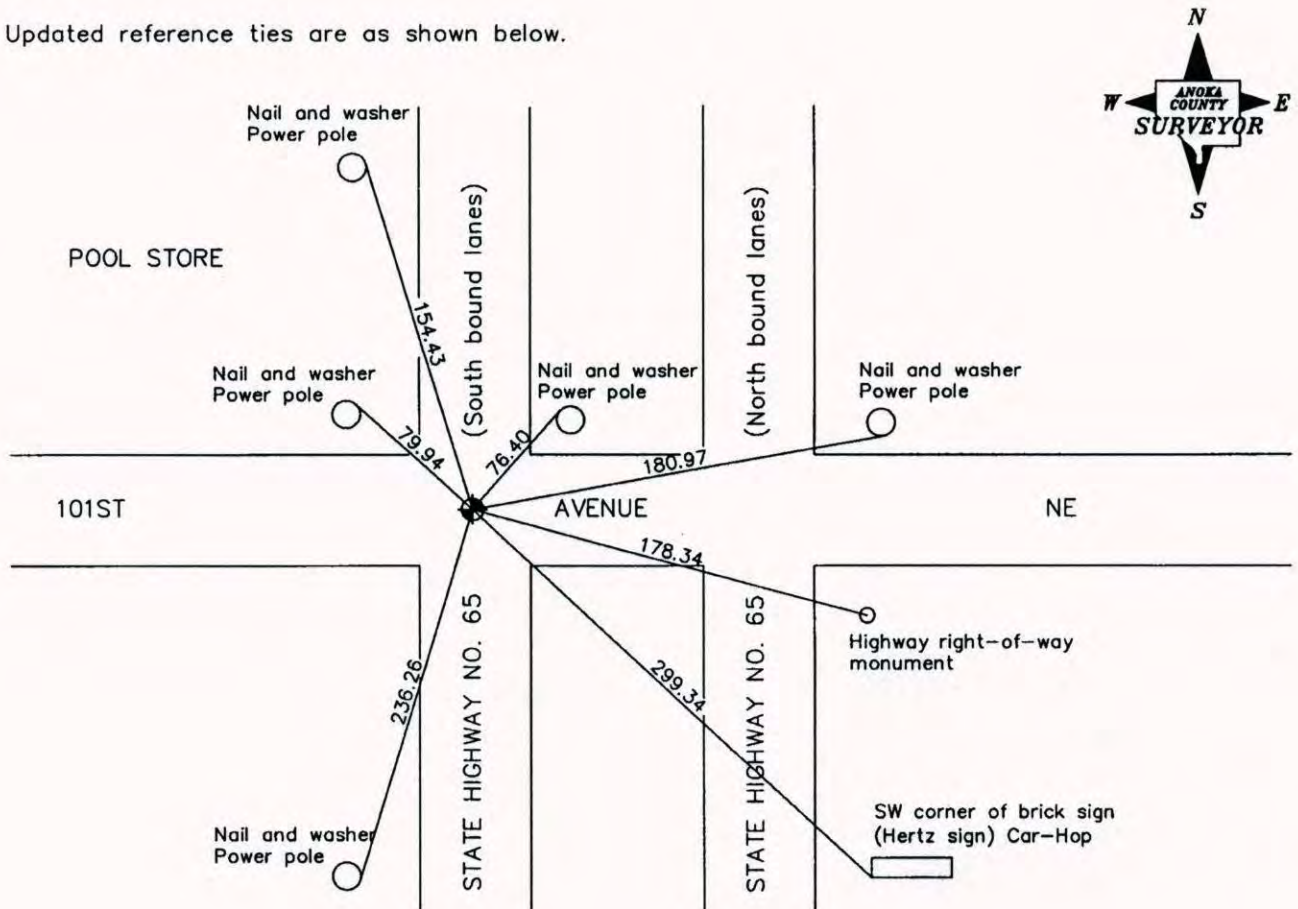
South 1/4 Corner of Sec. 20 Township 31 Range 23

On the ___ day of August, 1959, the described corner was evidenced by a P.K. nail

and to perpetuate the location of said corner, at the exact location thereof, a permanent marker was placed consisting of a cast iron monument

AND on the 31st day of August, 2006, said permanent marker was replaced with a 1/2" iron pipe using transit ties

Updated reference ties are as shown below.



Revised date

7/11/90
10/24/90
7/18/95
Reset 8/31/06

N.A.D. 1983 Coordinates
(1996 Adjustment)

County Project Coordinates	
Northing	143119.6457
Easting	508070.9582
Date	8/31/06

I hereby certify that this United States public land survey monument record is correct and complete to the best of my knowledge and belief.

Date 6/28/07
Larry D. Hoium, Anoka County Surveyor
 Minnesota License Number 18165

CERTIFICATE OF LOCATION OF GOVERNMENT CORNER

County of Anoka

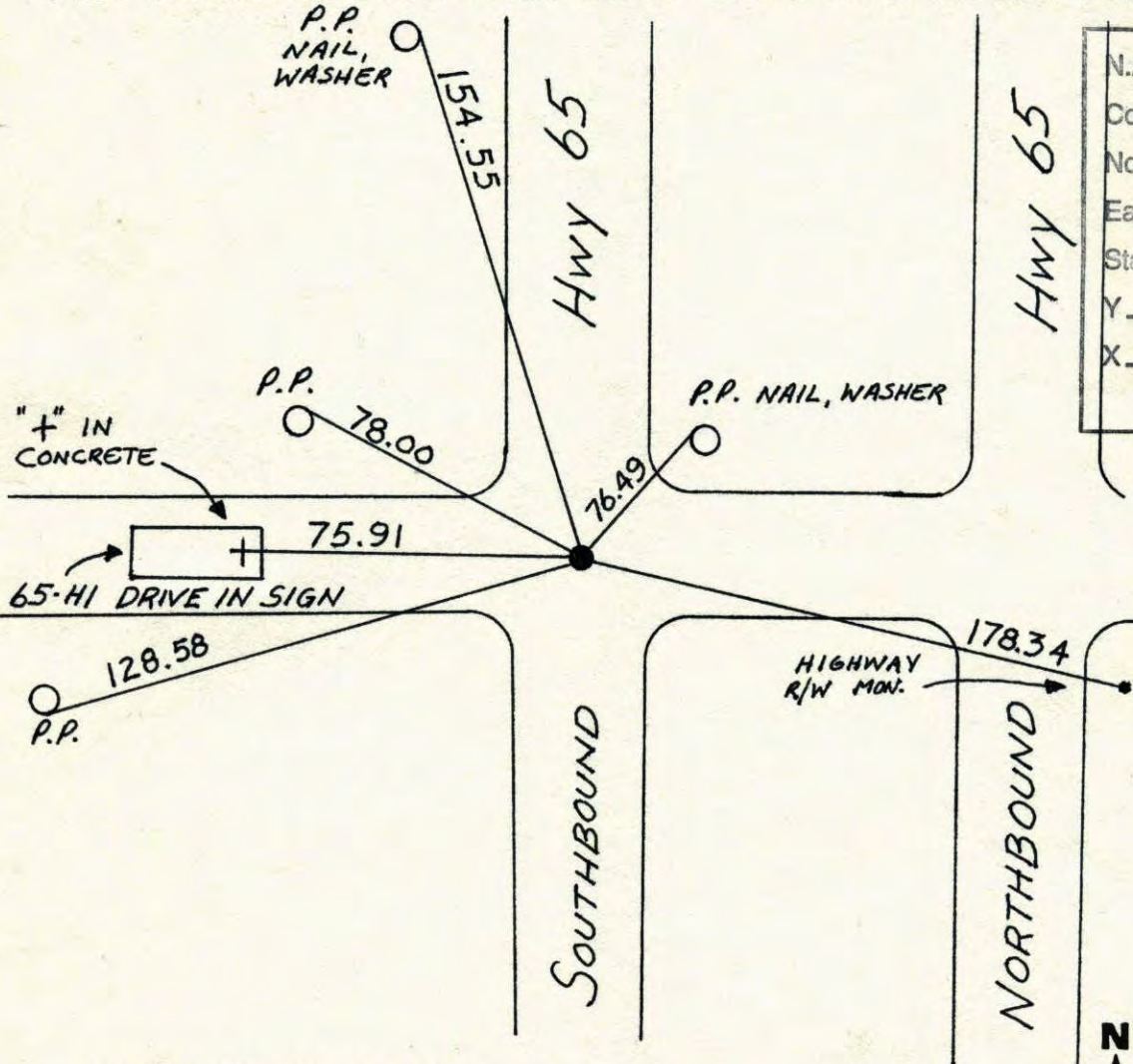
State of Minnesota

SOUTH QTR. Corner of Sec. 20 Township 31 Range 23

I hereby certify that on the day of AUG., 1959, I found the described corner which was evidenced by P. K. SPIKE

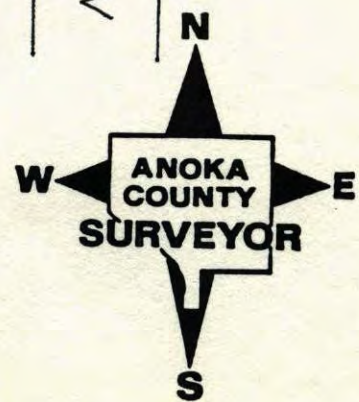
and I further certify that to perpetuate the location of said corner, I did, at the exact location thereof, place a permanent marker consisting of CAST IRON MON.
UNDER BLKTP.

which reference or witness monuments are located in the manner following:



N.A.D.	1983	Co-ordinates
County	Project	Co-ordinates
Northing	143119.6457	
Easting	508070.9582	
State Plane Co-ordinates		
Y	_____	
X	_____	
Date _____		

Revised date	Revised date	Revised date
6-11-86		
7-11-90		
10-24-90		
7-18-95		



CERTIFICATE OF LOCATION OF GOVERNMENT CORNER

County of Anoka

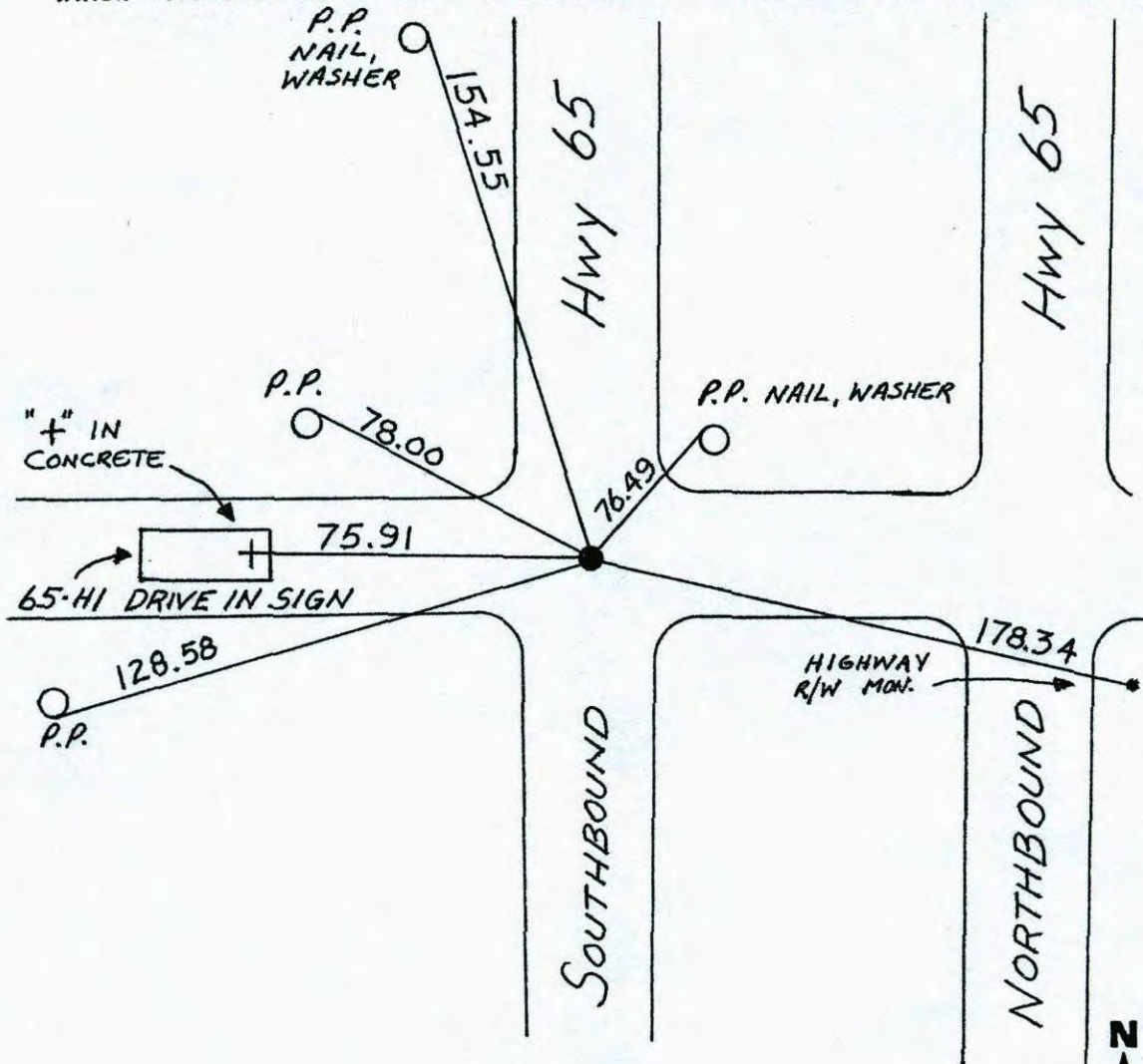
State of Minnesota

SOUTH QTR. Corner of Sec. 20 Township 31 Range 23

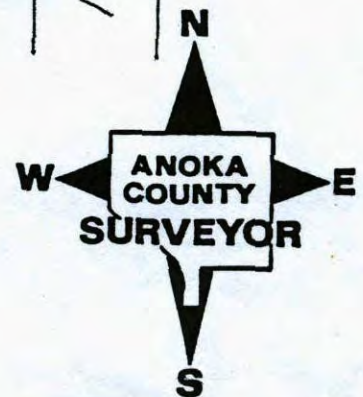
I hereby certify that on the day of AUG., 1959, I found the described corner which was evidenced by P. K. SPIKE

and I further certify that to perpetuate the location of said corner, I did, at the exact location thereof, place a permanent marker consisting of CAST IRON MON.
UNDER BLKTP.

which reference or witness monuments are located in the manner following:



Revised date	Revised date	Revised date
6-11-86		
7-11-90		
10-24-90		
7-18-95		



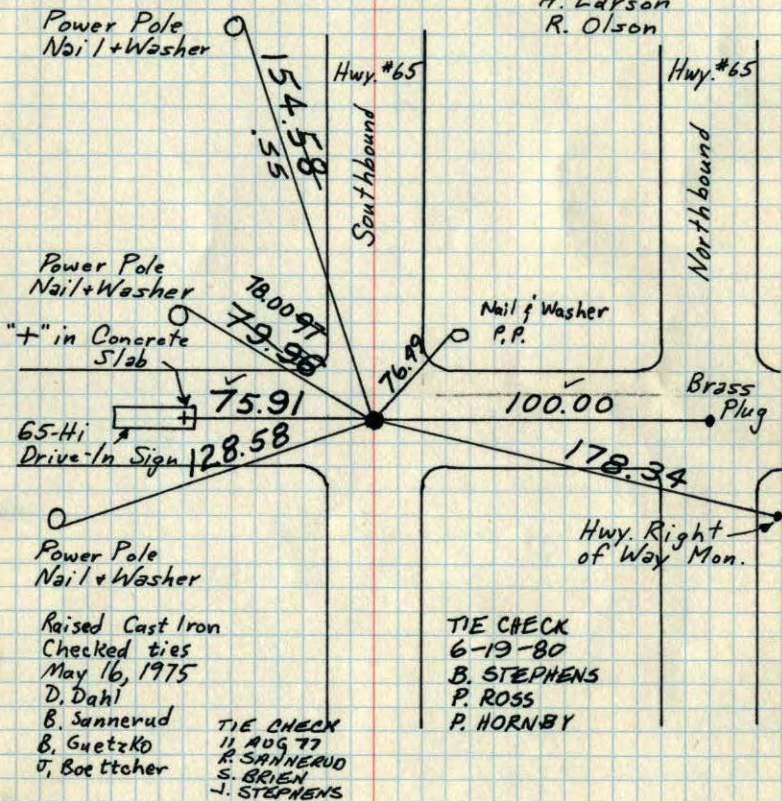
81
S 1/4 Cor. Sec. 20-T31-R23

Found PK Spike from Schoell + Madsen ties of Aug. 1959.

Replaced PK with Cast Iron Monument flush. PK's 2.00' North + East. Monument is 3 ± West of E.

Feb. 5, 1963
J. O. Oliver
M. D. Anderson

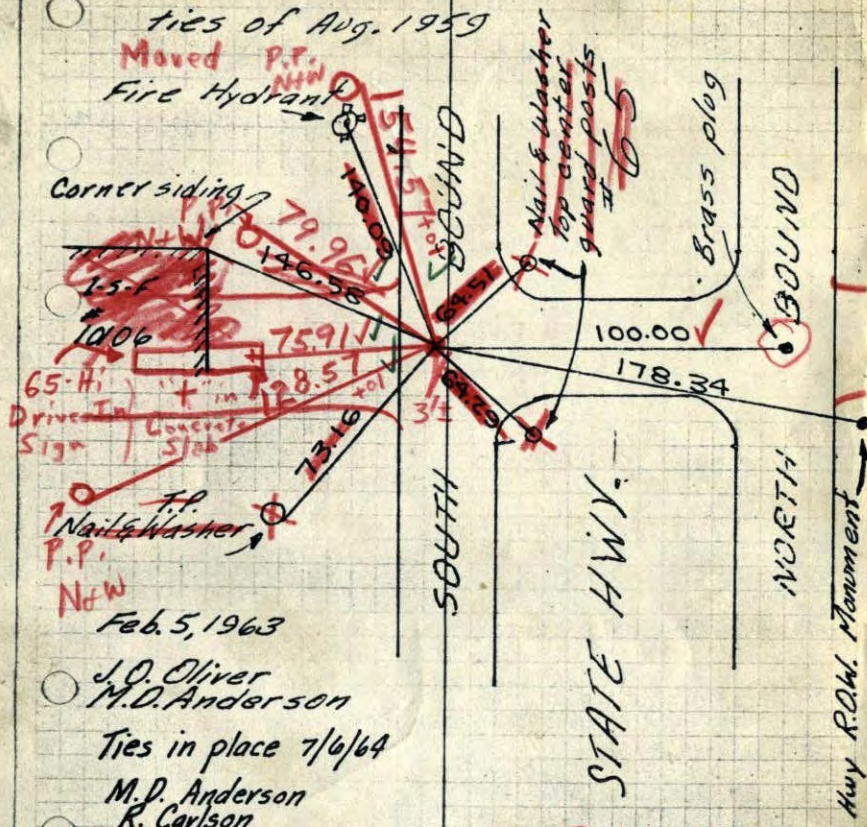
Aug. 28, 1969
P. Powell
H. Larson
R. Olson



TEMPERATURE CORRECTED AND HORIZONTALLY TAPED MEASUREMENTS
ROLAND W. ANDERSON
COUNTY SURVEYOR
ANOKA COUNTY, MINNESOTA

S 1/4 Cor. Sec. 20, T31, R23

Found P.K. spike from Schoell & Madsen ties of Aug. 1959



Feb. 5, 1963
J. O. Oliver
M. D. Anderson
Ties in place 7/6/64
M. D. Anderson
R. Carlson

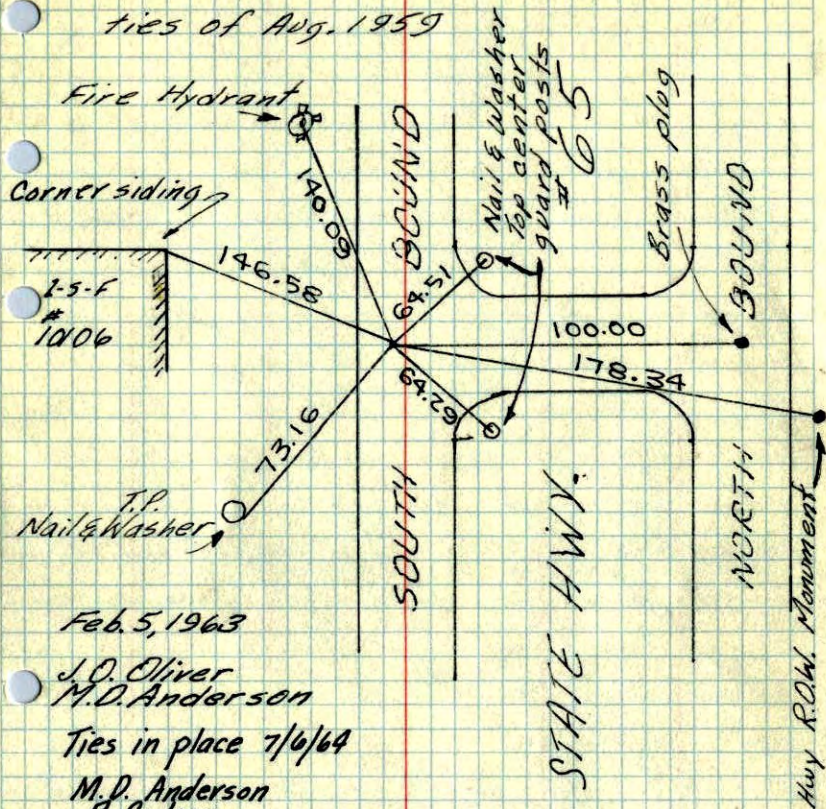
TEMPERATURE CORRECTED AND HORIZONTALLY TAPED MEASUREMENTS

ROLAND W. ANDERSON
COUNTY SURVEYOR
ANOKA COUNTY, MINNESOTA

Set C.I. Mon. flush in place of PK. PK's 2.00' N+E. 8/28/69 #8 - 80° D. Powell H. Larson R. Olson

S 1/4 Cor. Sec. 20, T31, R23

Found P.K. spike from Schoell & Madsen ties of Aug. 1959



Feb. 5, 1963

J.O. Oliver
M.D. Anderson

Ties in place 7/6/64

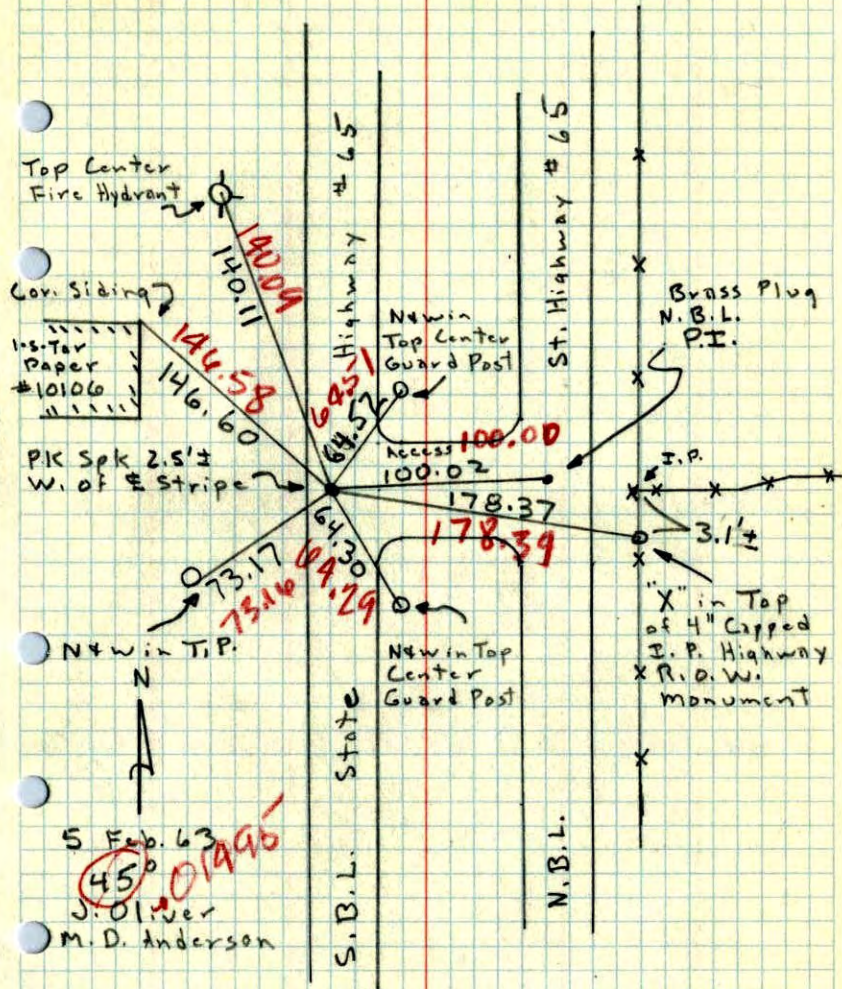
M.D. Anderson
R. Carlson

TEMPERATURE CORRECTED
AND HORIZONTALLY
TAPED MEASUREMENTS

ROLAND W. ANDERSON
COUNTY SURVEYOR
ANOKA COUNTY, MINNESOTA

S 1/4 Cor. Sec. 20, T31, R23

Found PK Spk. tied out by Schoell & Madsen in Aug. 59



5 Feb. 63

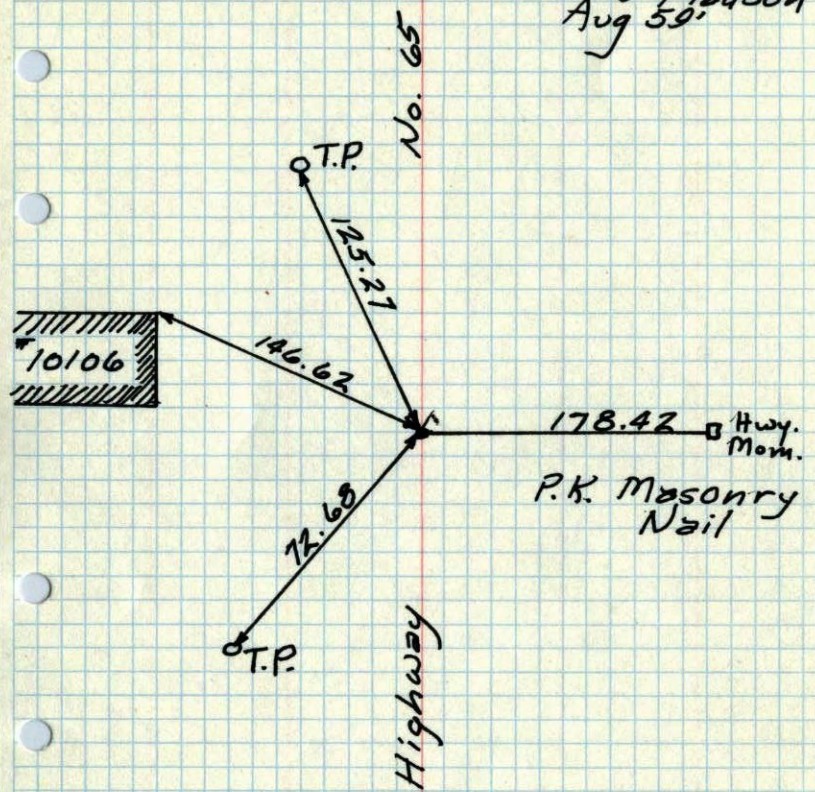
J.O. Oliver
M.D. Anderson

45°
01996

S 1/4 Cor. 20 - 31 - 23

52

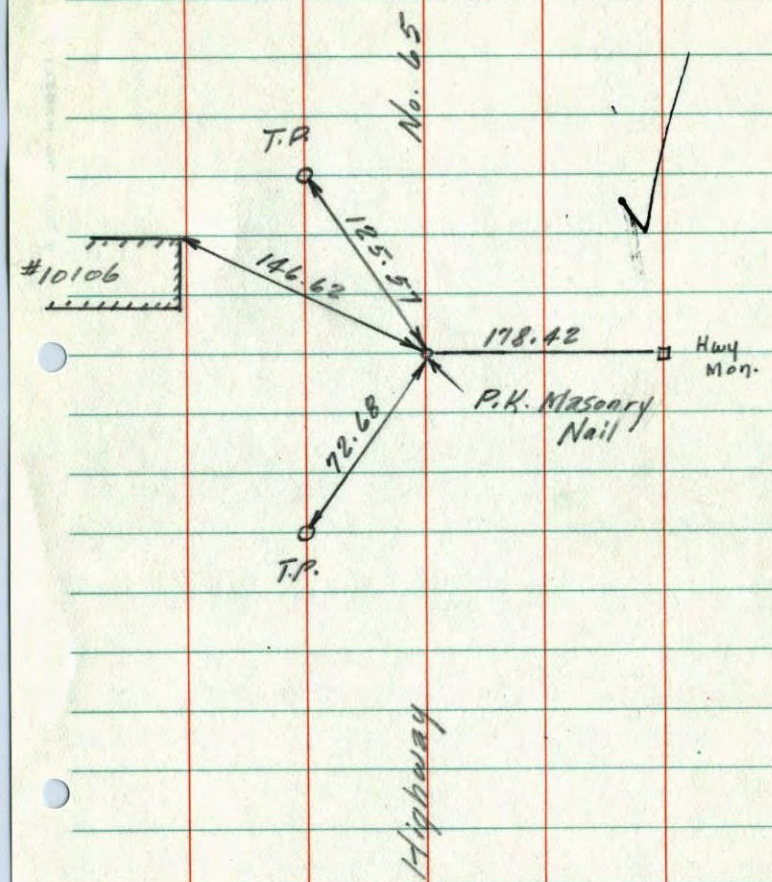
Ties by Schoell & Madson
Aug '59



C. Madson
8/6/59

S 1/4 Cor. 20 - 31 - 23

Ties by Schoell & Madson Aug '59

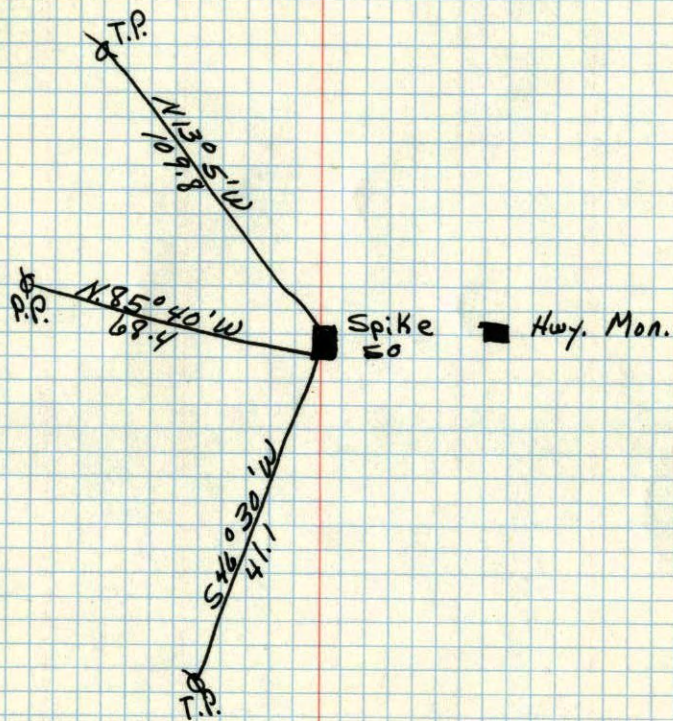


8/6/59

C. Madson

S¹/₄ Cor. of Sec. 20 T. 31 R. 23

R.R. Spike driven in Conc. Pavement



MAY 27, 1947
CARTWRIGHT