

# CERTIFICATE OF LOCATION OF GOVERNMENT CORNER

County of Anoka

State of Minnesota

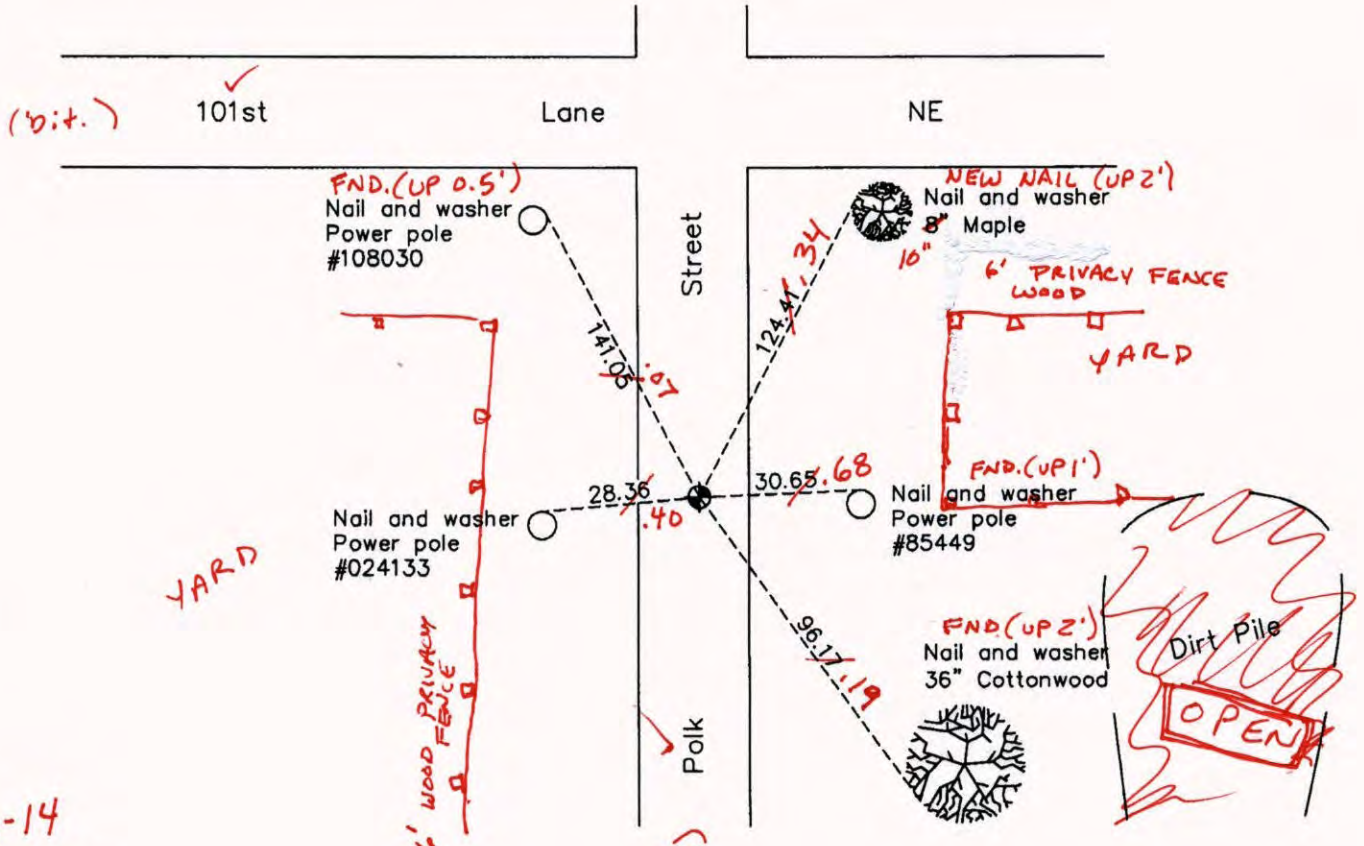
## Southwest Corner of Sec. 20 Township 31 Range 23

On the 9th day of March, 1962, the described corner was evidenced by a concrete monument

and to perpetuate the location of said corner, at the exact location thereof, a permanent marker was placed consisting of a cast iron monument (on E)

AND on the 21st day of October, 2010, said permanent marker was replaced with a new cast iron monument after construction and the ties were updated

Updated reference ties are as shown below.



6-16-14  
BK-SS  
T/T  
VRS

Revision Date  
12/16/10

N.A.D. 1983 Coordinates  
(1996 Adjustment)

County Project Coordinates	
Northing	143151.4720
Easting	505392.8182
Date	12/10/98

I hereby certify that this United States public land survey monument record is correct and complete to the best of my knowledge and belief.

*Larry D. Hoium* Date 12/16/10

Larry D. Hoium, Anoka County Surveyor  
Minnesota License Number 18165

VRS 3DQ=0.07    N=143151.4444    E=505392.7842

# CERTIFICATE OF LOCATION OF GOVERNMENT CORNER

County of Anoka

State of Minnesota

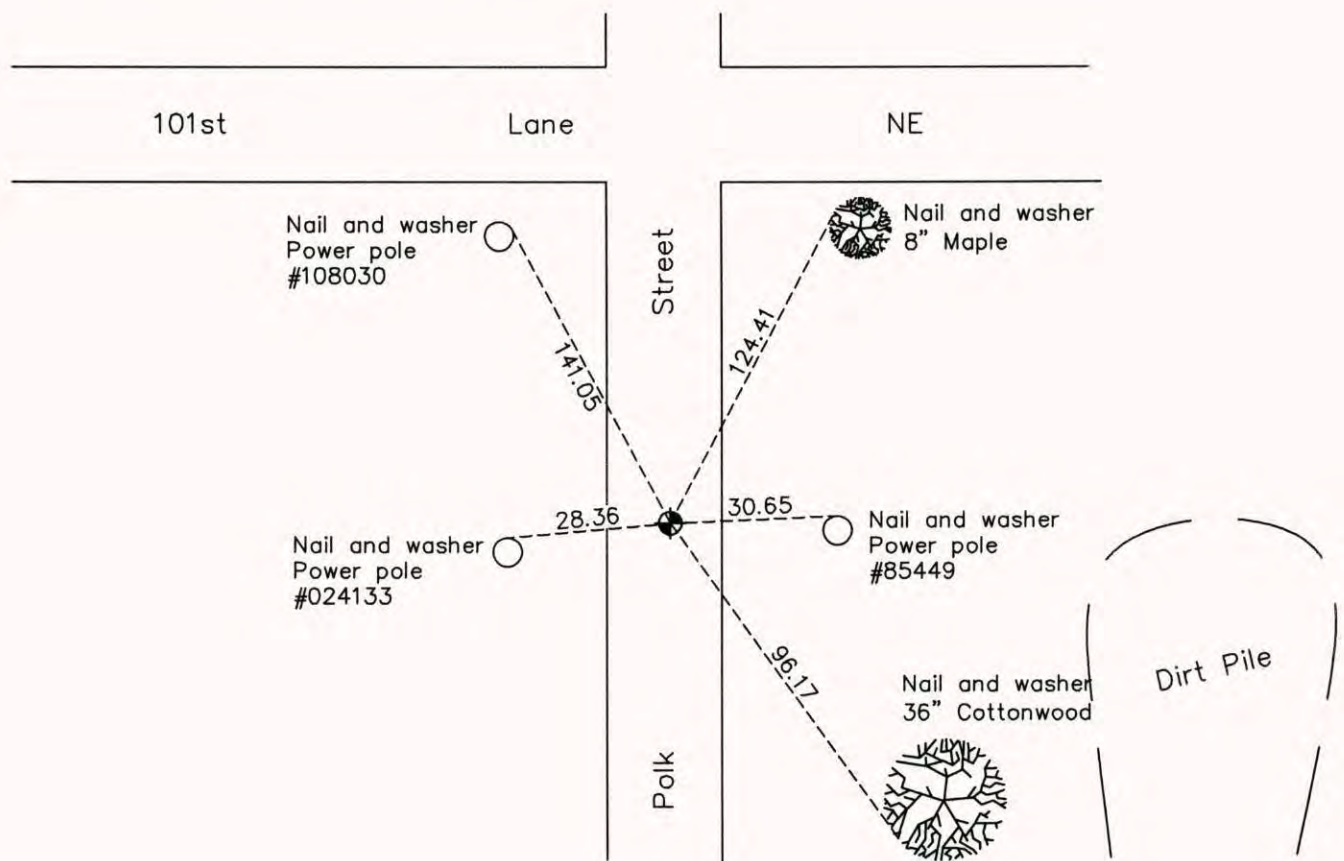
## Southwest Corner of Sec. 20 Township 31 Range 23

On the 9th day of March, 1962, the described corner was evidenced by a concrete monument

and to perpetuate the location of said corner, at the exact location thereof, a permanent marker was placed consisting of a cast iron monument

AND on the 21st day of October, 2010, said permanent marker was replaced with a new cast iron monument after construction and the ties were updated

Updated reference ties are as shown below.



ANOKA COUNTY SURVEYOR

Revision Date 12/16/10

N.A.D. 1983 Coordinates  
(1996 Adjustment)

County Project Coordinates	
Northing	<u>143151.4720</u>
Easting	<u>505392.8182</u>
Date	<u>12/10/98</u>

I hereby certify that this United States public land survey monument record is correct and complete to the best of my knowledge and belief.

*Larry D. Hoium* Date 12/16/10

Larry D. Hoium, Anoka County Surveyor

Minnesota License Number 18165

6/15/10

# CERTIFICATE OF LOCATION OF GOVERNMENT CORNER

County of Anoka State of Minnesota

## Southwest Corner of Sec. 20 Township 31 Range 23

On the 9th day of March, 1962, the described corner was evidenced by a concrete monument

and to perpetuate the location of said corner, at the exact location thereof, a permanent marker was placed consisting of a cast iron monument

AND on the 21st day of June, 2006, said permanent marker was found and the ties were updated

Updated reference ties are as shown below.

REPLACED MON  
10-21-10  
TIES - BK'SH  
FULL DISTANCES

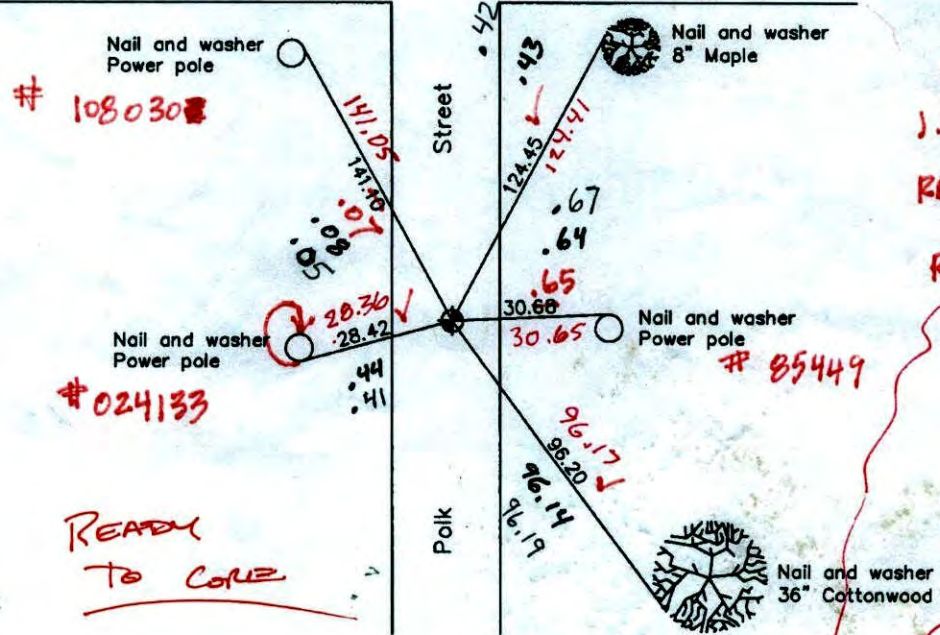


NE FROM SETTING CIM AND RETIED

101st Lane

10/13/10  
J.S. S.S.  
SET NEW PK  
AND RETIED

\* BLACK DIST.  
ARE FROM P.K SET  
W/ REFLECTOR  
J.S S.S.  
9-14-10



6-11-10  
J.S. S.S. J.B.  
RETIED / TRANSIT TIE  
REMOVED FOR  
CONST.

READY  
TO CORRE

DIRT PILE

Revised date
7/18/95
12/10/98
6/21/06

N.A.D. 1983 Coordinates (1996 Adjustment)	
County Project Coordinates	
Northing	143151.4720
Easting	505392.8182
Date	12/10/98

I hereby certify that this United States public land survey monument record is correct and complete to the best of my knowledge and belief.

*Larry D. Holm* Date 6/21/06  
 Larry D. Holm, Anoka County Surveyor  
 Minnesota License Number 18165

DONE  
12/16/10  
LH

VRS PK  
9-14-10

143151.44  
505392.811

# CERTIFICATE OF LOCATION OF GOVERNMENT CORNER

County of Anoka

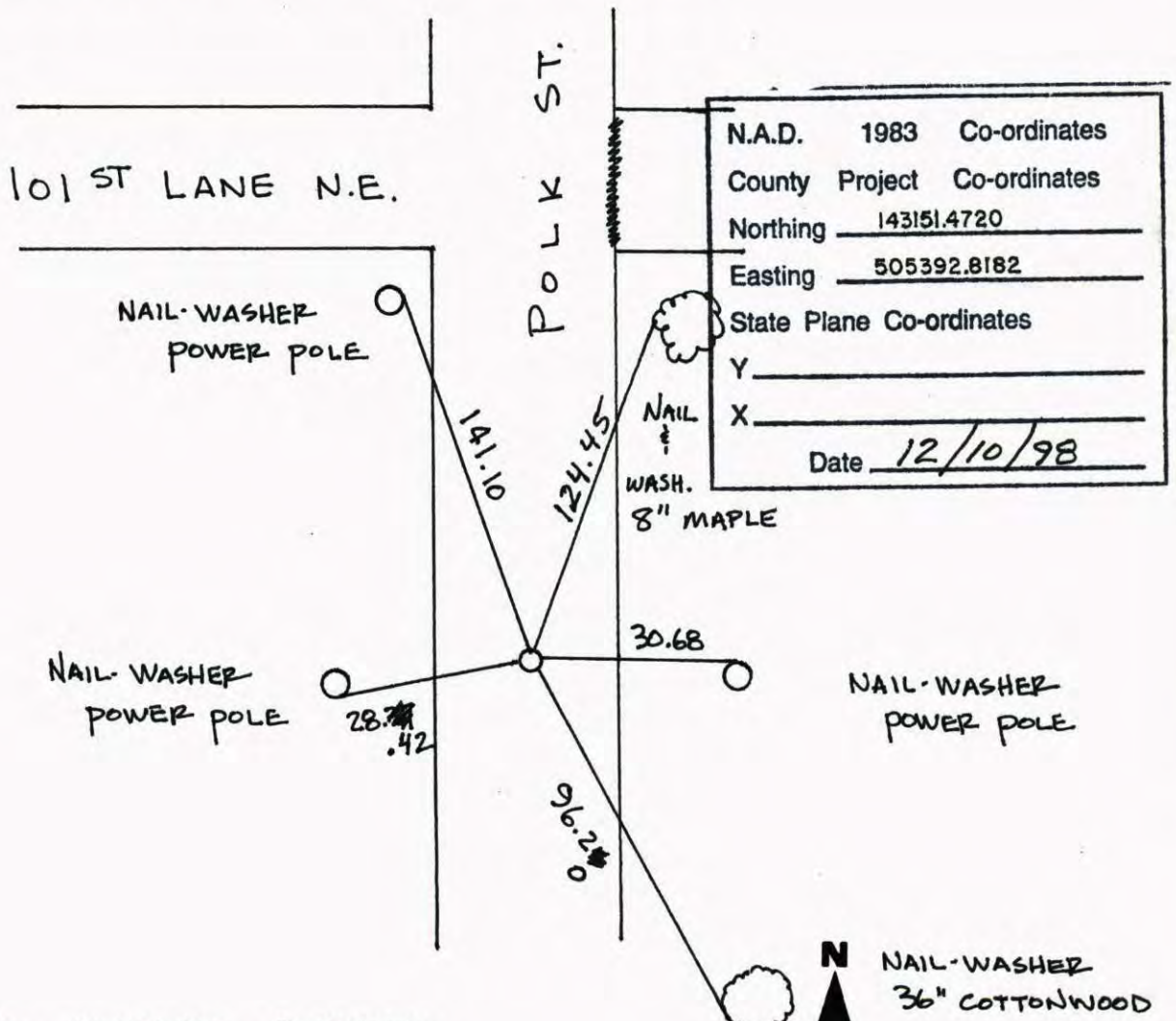
State of Minnesota

SOUTHWEST Corner of Sec. 20 Township 31 Range 23

I hereby certify that on the 9<sup>TH</sup> day of MARCH, 1962, I found the described corner which was evidenced by CONCRETE MONUMENT

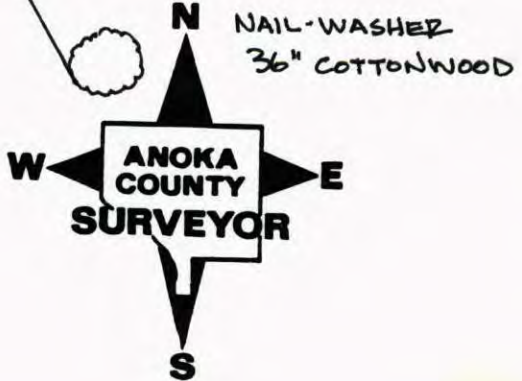
and I further certify that to perpetuate the location of said corner, I did, at the exact location thereof, place a permanent marker consisting of CAST IRON MONUMENT

which reference or witness monuments are located in the manner following:



N.A.D.	1983	Co-ordinates
County Project	Co-ordinates	
Northing	<u>143151.4720</u>	
Easting	<u>505392.8182</u>	
State Plane Co-ordinates		
Y	_____	
X	_____	
Date	<u>12/10/98</u>	

Revised date	Revised date	Revised date
<u>4-24-87</u>		
<u>6-21-90</u>		
<u>6-7-95</u>		
<u>7-18-95</u>		
<u>12-10-98</u>		
<u>6-21-06</u>		



# CERTIFICATE OF LOCATION OF GOVERNMENT CORNER

County of Anoka

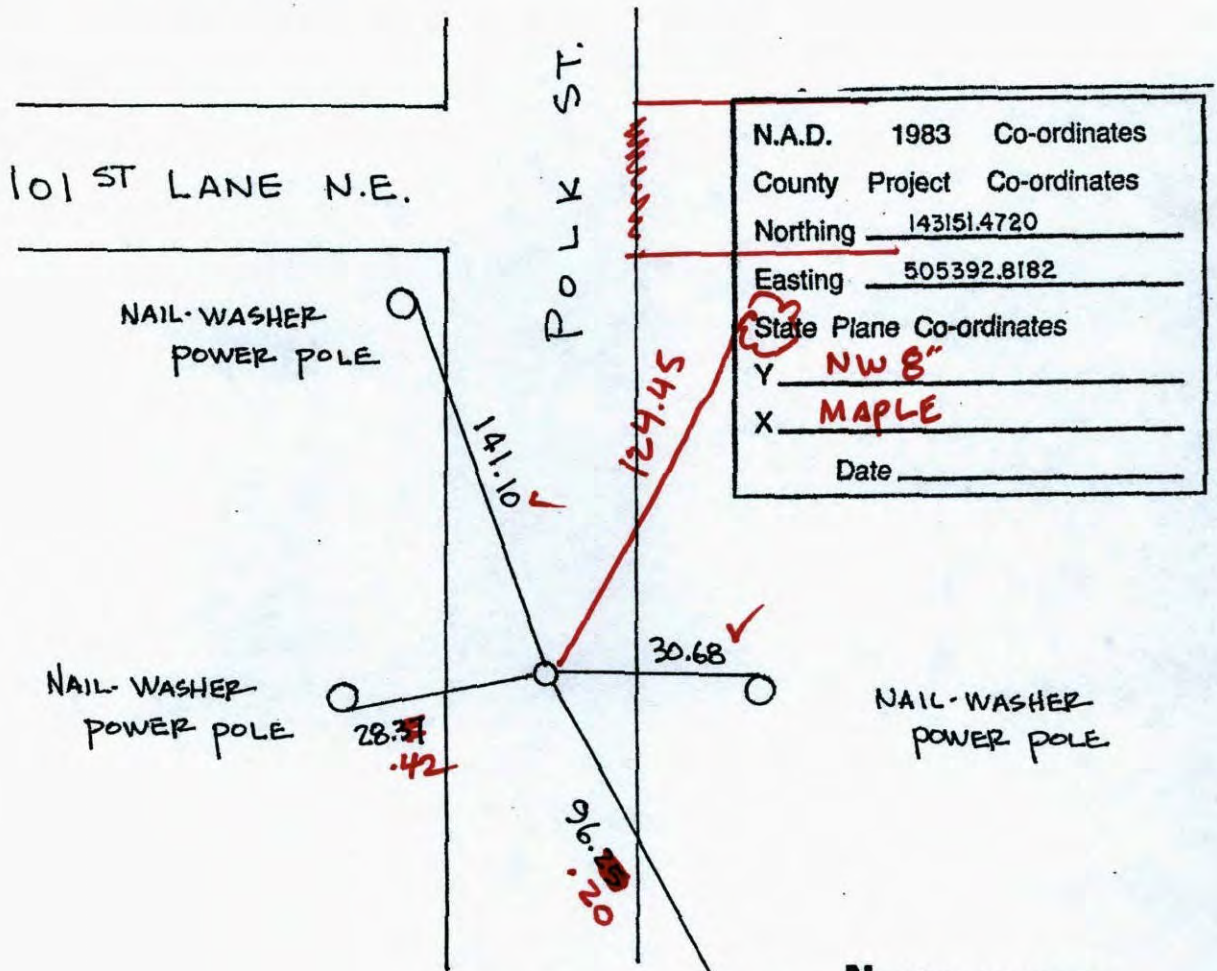
State of Minnesota

SOUTHWEST Corner of Sec. 20 Township 31 Range 23

I hereby certify that on the 9<sup>TH</sup> day of MARCH, 1962, I found the described corner which was evidenced by CONCRETE MONUMENT

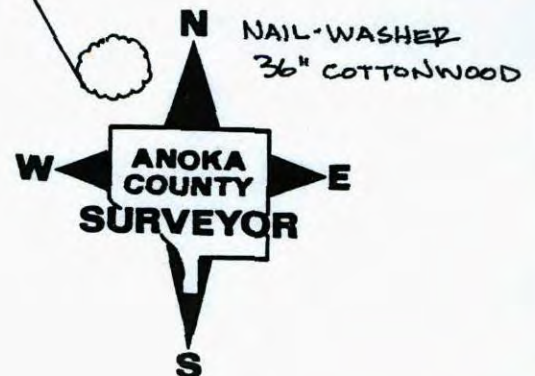
and I further certify that to perpetuate the location of said corner, I did, at the exact location thereof, place a permanent marker consisting of CAST IRON MONUMENT

which reference or witness monuments are located in the manner following:



N.A.D.	1983	Co-ordinates
County	Project	Co-ordinates
Northing	<u>143151.4720</u>	
Easting	<u>505392.8182</u>	
State Plane Co-ordinates		
Y	<u>NW 8"</u>	
X	<u>MAPLE</u>	
Date	_____	

Revised date	Revised date	Revised date
4-24-87		
6-21-90		
6-7-95		
7-18-95		
12-10-98		
6-21-06		



SOUTHWEST COR. SEC. 20 T31 R23

RETIED CAST IRON MONUMENT

12-10-98

J. SIMMER

B. KLEMZ



101ST LN. NE,

POLK ST.

N.W.  
P.P.

14.10

30.68

N.W.  
P.P.

28.37

N.W.  
P.P.

6.25

N.W.  
36"  
COTTONWOOD

NO. 446

NATIONAL FORECAST

SW CORNER SEC. 20 TW. 31 R. 23

RETIED CAST IRON MON.

101ST LANE NE

POLK ST.

NEW  
P.P.

13.20

N.W.  
P.P.

28.37

30.68

NEW  
P.P.

135.70

96.25

1/2 STORY  
FRAME

N

NEW  
24" COTTONWOODJOSH & JASON  
ANDERSON

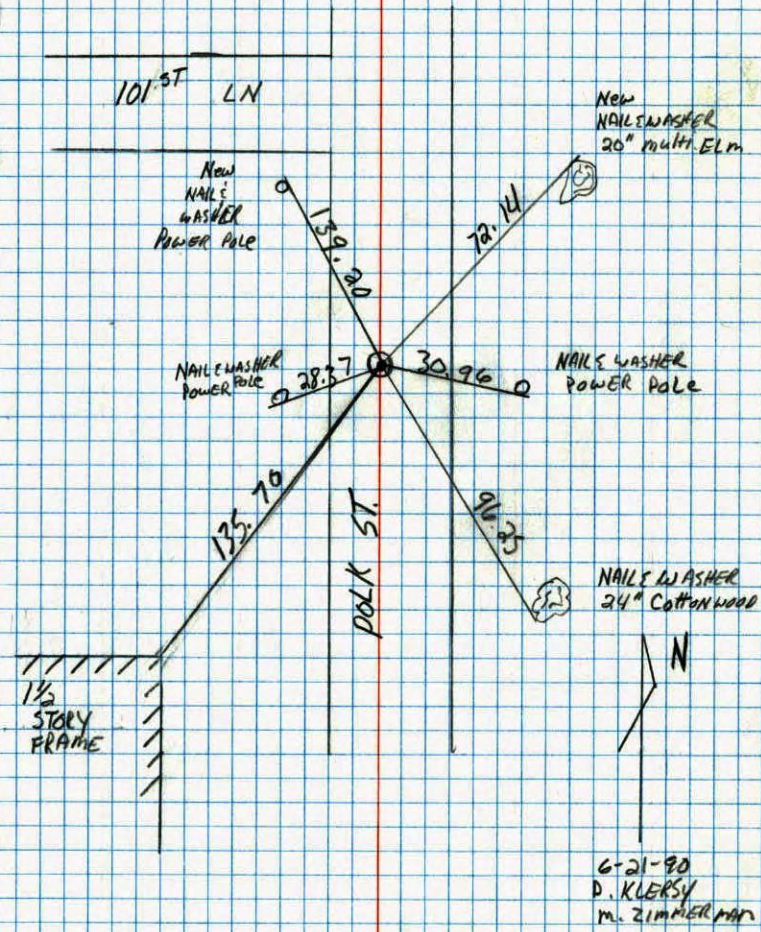
6-7-95

NO. 446

NATIONAL FORECAST

Southwest corner of sec 20 T31 R23

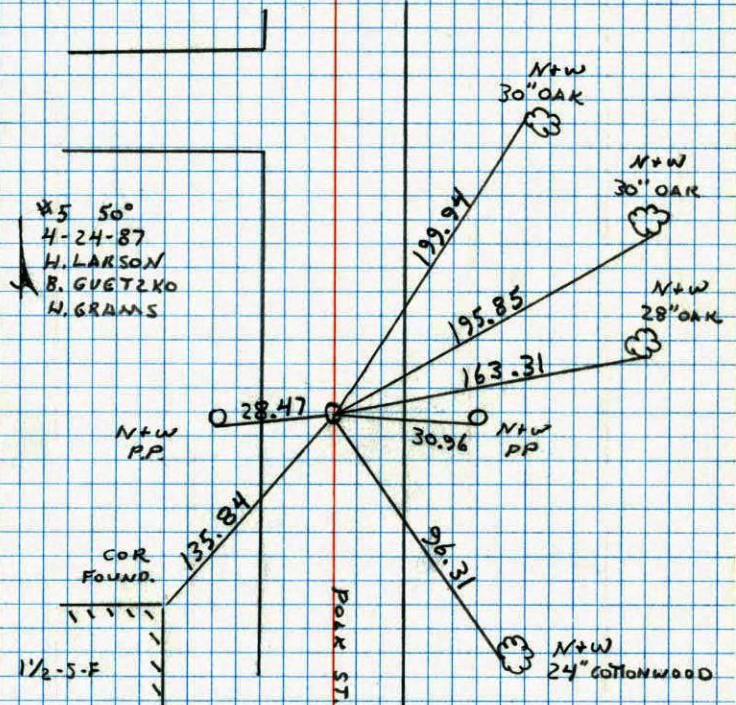
Retied cast iron monuments



NO. 448 TELEPHONE

SOUTHWEST COR. SECTION 20 T31 R23

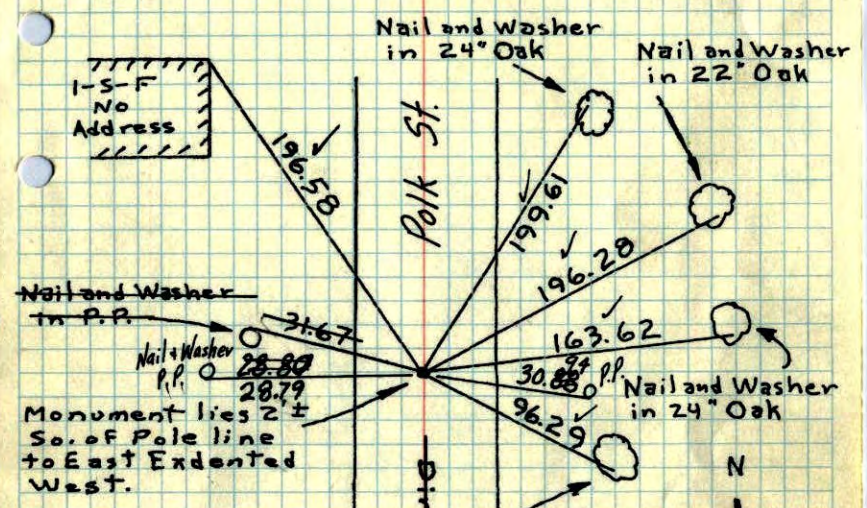
PUT BACK CAST IRON AFTER CONSTRUCTION  
RETIED. PK 2.00' N+E



NO. 448 TELEPHONE

# SW Cor. Sec. 20, T31, R23

Found 1/2" I.P. Flush - 3/4" I.P. down 0.7'  
 - Conc. (4"x6") Monument down 2' - Set  
Cast Iron Monument on Top of Conc. Mon.  
 Top of C.I. Mon. is down 0.2' flush 1 1/2' W. of E



Tie Check  
 July 29, 1968  
 H. Larson  
 G. Elsberry

9-23-71  
 H. LARSON  
 F. WAKS  
 M. JENSON

Tie Check  
 May 15, 1975  
 D. Dahl  
 G. Boettcher  
 B. Sannerud

**ROLAND W. ANDERSON**  
 COUNTY SURVEYOR  
 ANOKA COUNTY, MINNESOTA

TIE CHECK  
 19 AUG 77  
 S. BRIDG  
 J. STEPHENS

TIE CHECK  
 6-5-80  
 B. STEPHENS  
 P. ROSS  
 P. HORNBY

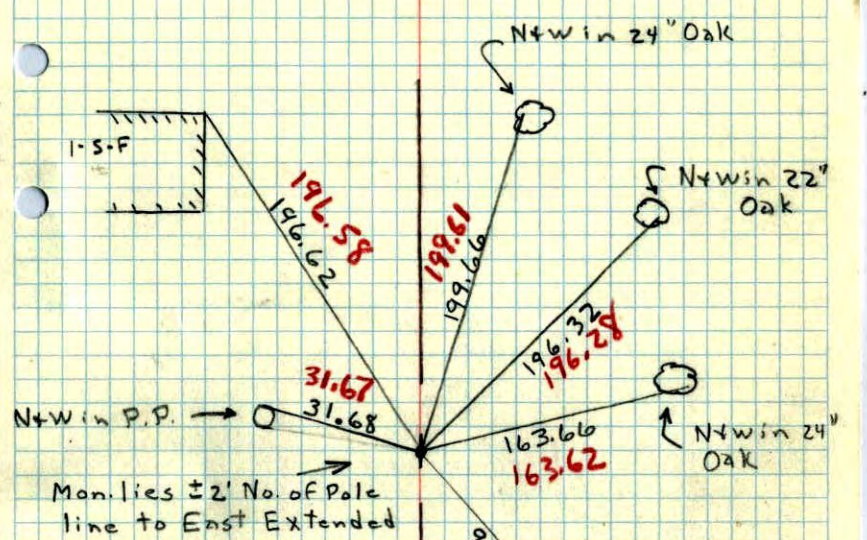
Retie 6/11/64  
 M.D. Anderson  
 R. Carlson

TEMPERATURE-CORRECTED  
 AND HORIZONTALLY  
 TAPED MEASUREMENTS

9, Mar. 62  
 J. Oliver  
 M.D. Anderson  
 J. Zoeller

# SW Cor. Sec. 20, T31, R23

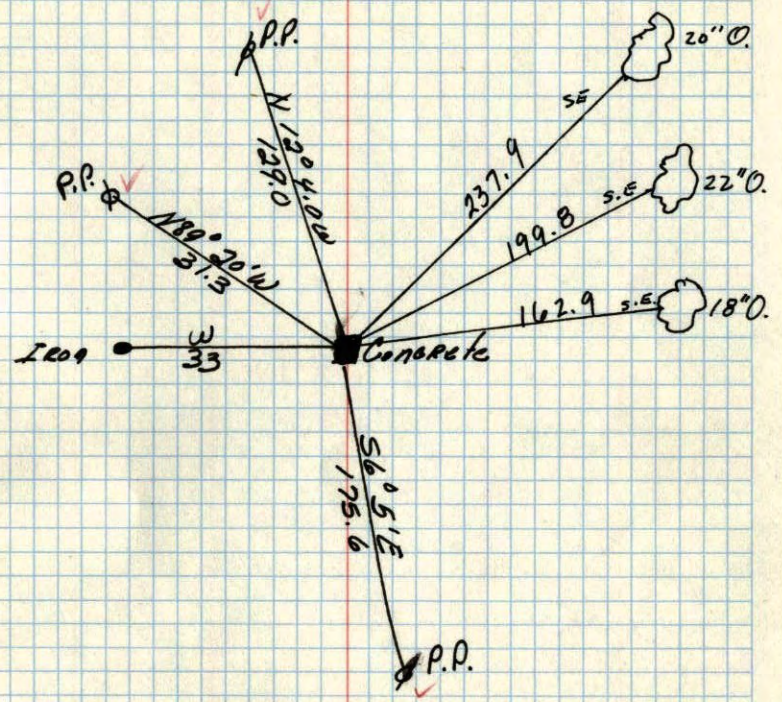
Found 1/2" I.P. Flush - 3/4" I.P. down 0.7' - Conc. (4"x6")  
 Mon. down 2' - Set C.I. Mon on Top of  
 Conc. Mon - Top of C.I. down 0.2'



9 Mar 62  
 33°  
 J. Oliver  
 M.D. Anderson  
 J. Zoeller



SW Cor. of Sec. 20 T31 R23  
Conc. Mon.



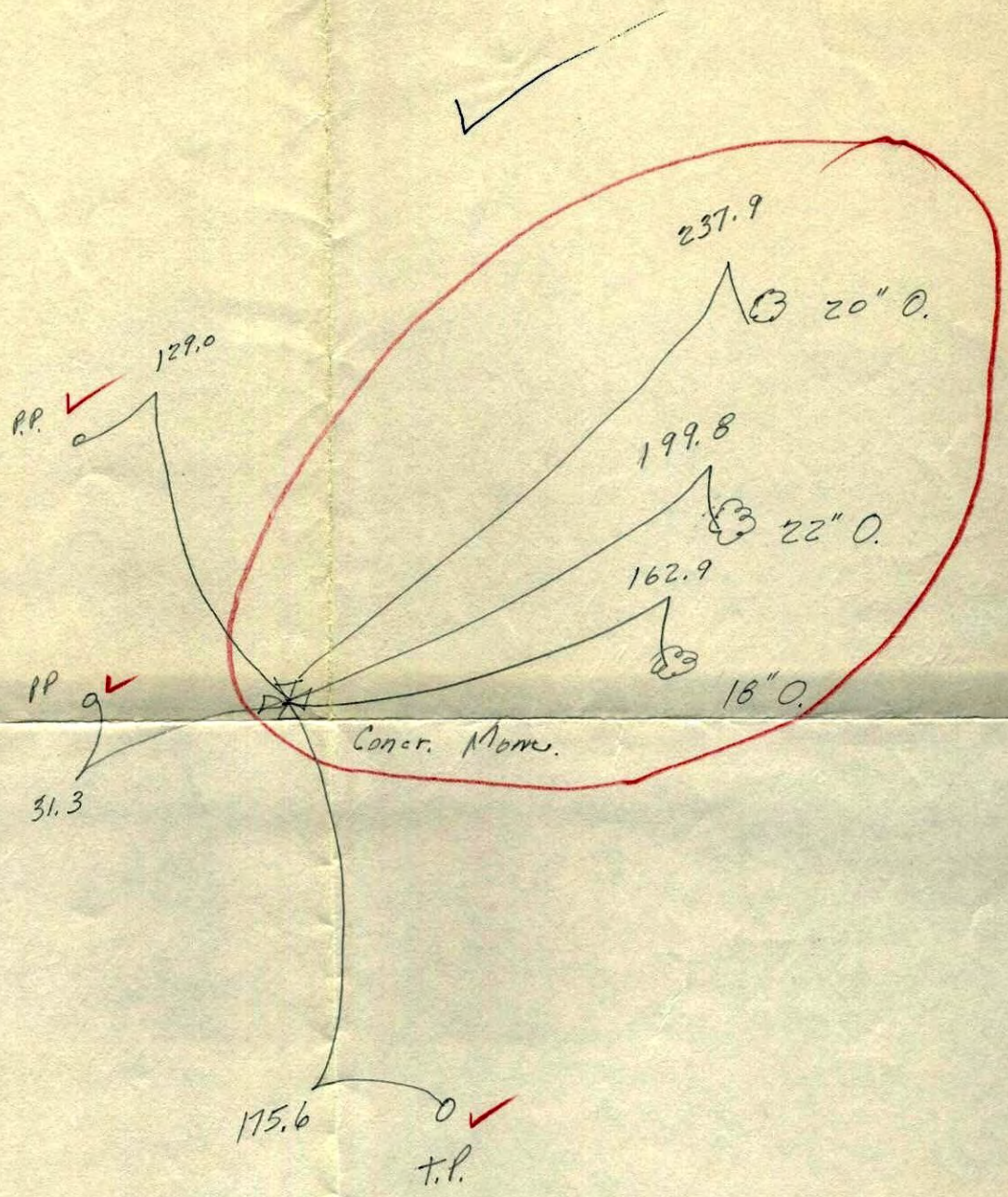
S.E. ties  
Suburban Eng  
Inc.  
May 1959

May 27, 1949  
Cartwright

SW

20

S.F. Cor. Sec. 17 T. 31 R. 23



Suburban Engineering, Inc.

May 1959