

# CERTIFICATE OF LOCATION OF GOVERNMENT CORNER

County of Anoka

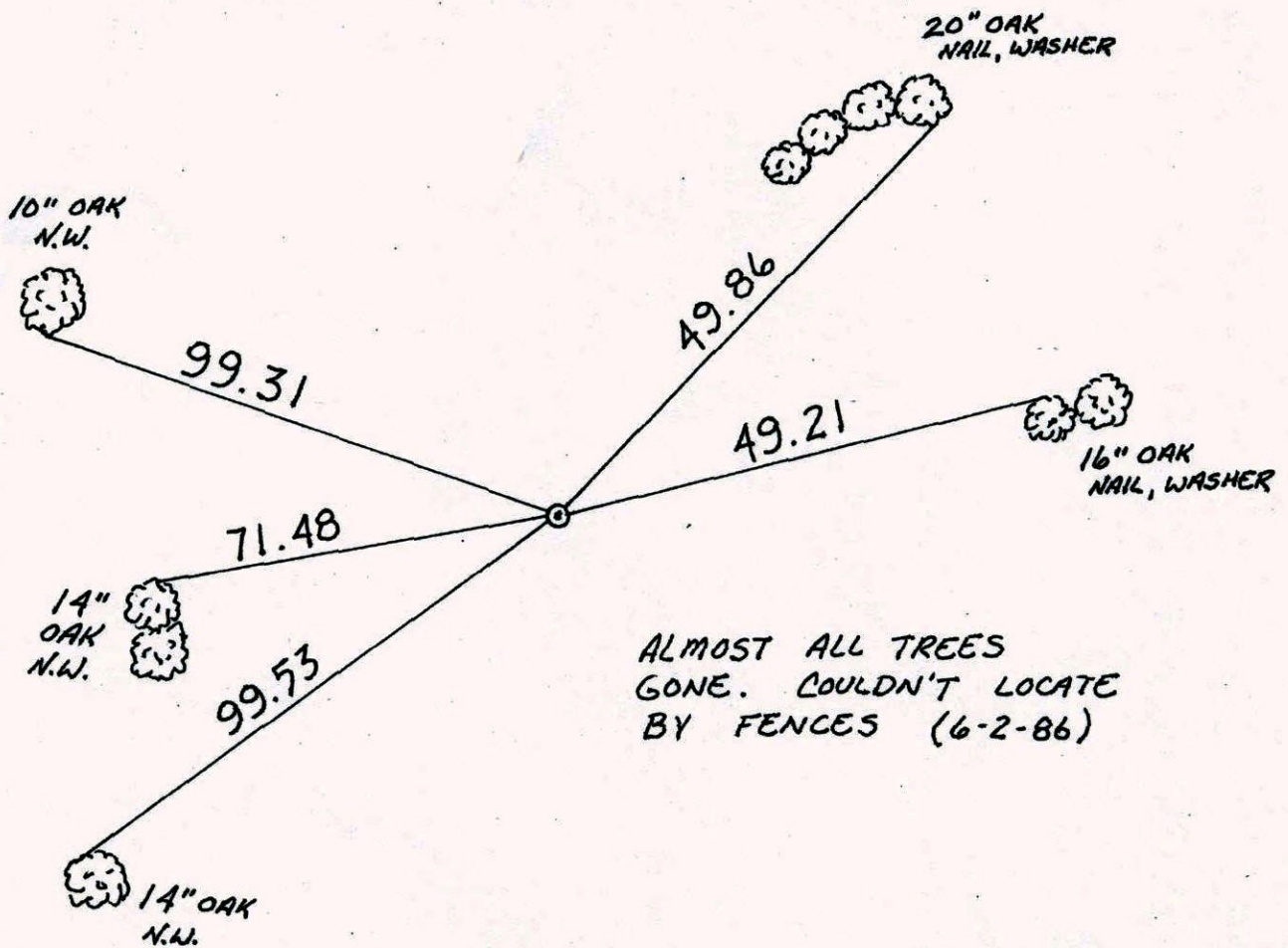
State of Minnesota

CENTER Corner of Sec. 30 Township 31 Range 23

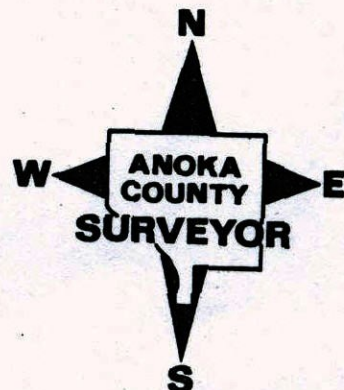
I hereby certify that on the 8 day of NOV., 1961, I found the described corner which was evidenced by 3/4" PINCHED IRON PIPE

and I further certify that to perpetuate the location of said corner, I did, at the exact location thereof, place a permanent marker consisting of CAST IRON MON.

which reference or witness monuments are located in the manner following:



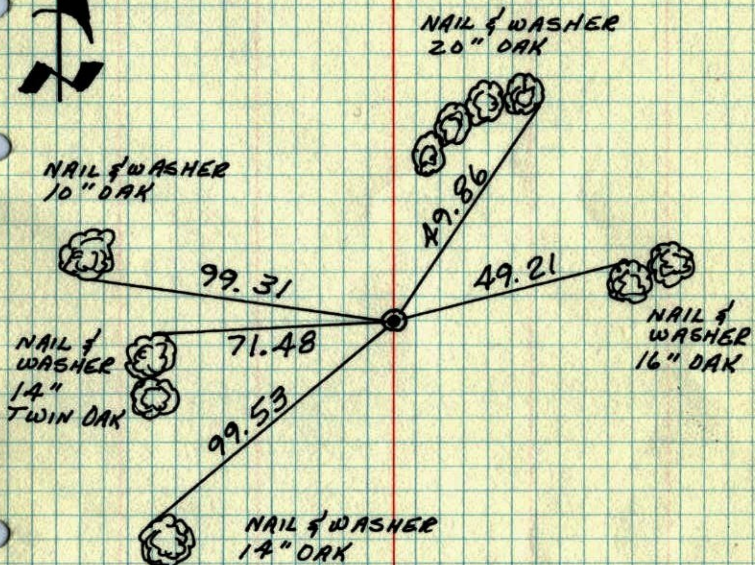
Revised date	Revised date	Revised date



# CENTER SECTION 30-T31-R23

ALL TIES (PREVIOUS) GONE. CAST IRON MONUMENT  
IN PLACE (UNDISTURBED)

24 OCT 77  
M. D. ANDERSON  
P. W. BERTLESON  
M. J. AUNE



TEMPERATURE CORRECTED  
AND HORIZONTALLY  
TAPED MEASUREMENTS

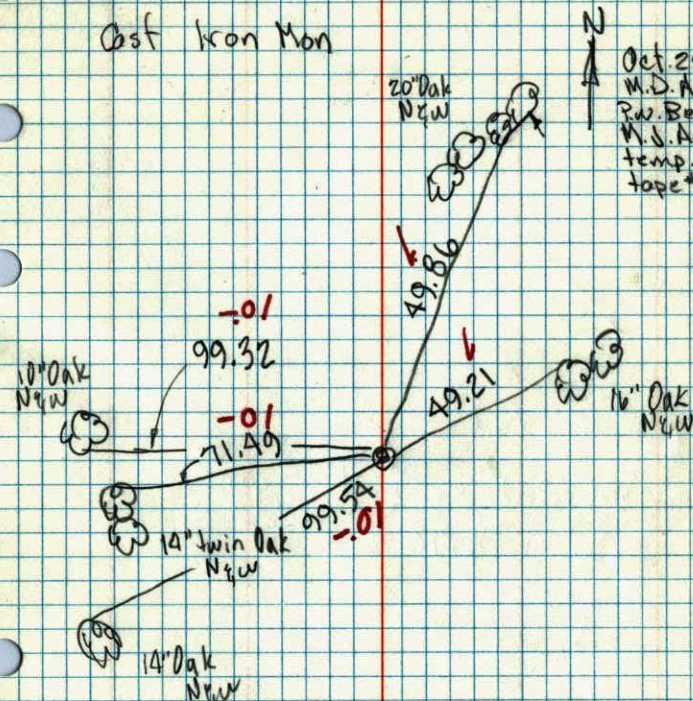
ROLAND W. ANDERSON  
COUNTY SURVEYOR  
ANOKA COUNTY, MINNESOTA

# Center Sec. 30-T31-R23

All ties (previous) gone  
Monument in place (undisturbed)

Cast Iron Mon

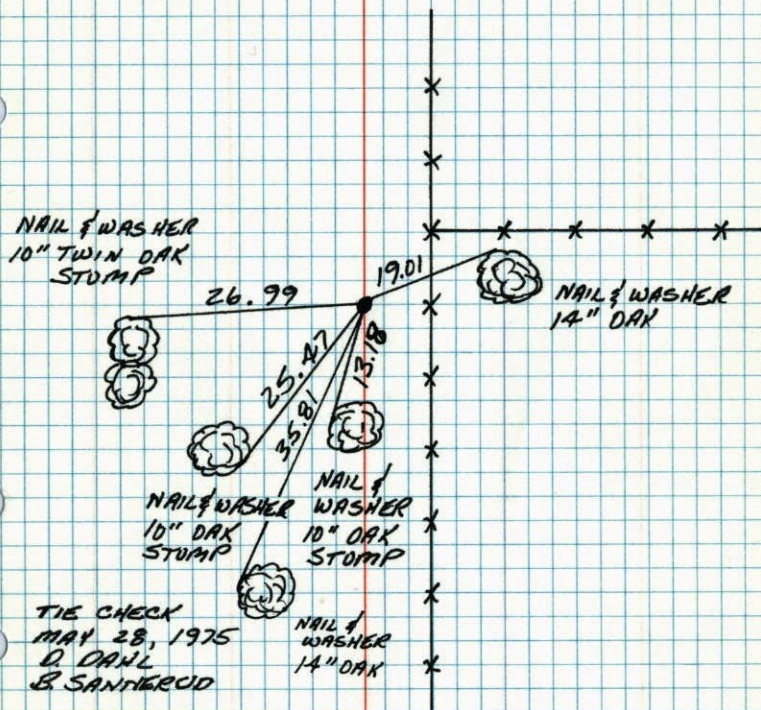
Oct. 24, 1977  
M. D. Anderson  
P. W. Bertleson  
M. J. Aune  
temp. 45°  
tape # 11



# CENTER OF SEC. 30-T31-R23

FOUND  $\frac{3}{4}$ " PINCHED IRON PIPE FLUSH  
WITH GROUND. FOUND FROM OLD MINNESOTA  
HIGHWAY DEPARTMENT TIES. NOVEMBER 8, 1961  
M.D. ANDERSON  
S. TODD

RESET  $\frac{3}{4}$ " IRON PIPE. APRIL 22, 1977  
M.D. ANDERSON



# CENTER OF SEC. 30-31-23

found  $\frac{3}{4}$ " pinched iron pipe  
flush with ground  
found ~~from~~ from old M.H.D. ties

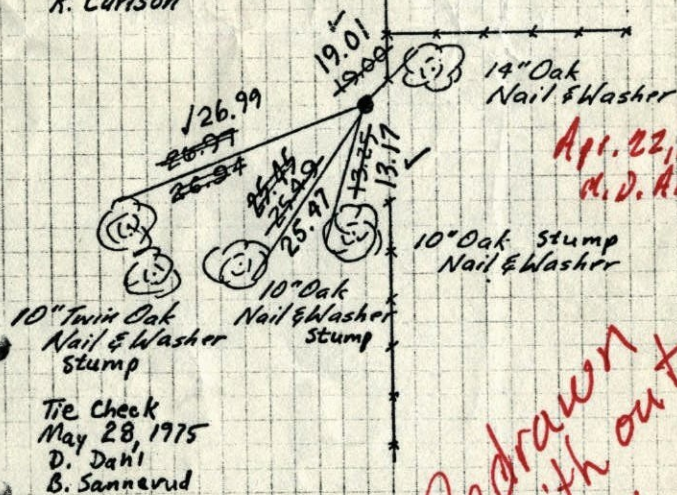
~~Replaced with Cast Iron Monument flush.~~  
August 9, 1968  
D. Powell  
R. Olson  
P. Pich

November 8, 1961  
M.D. Anderson  
B. Todd

Retie 6/15/64

M.D. Anderson  
R. Carlson

*3/4" iron pipe in  
place  
ties O.K.*



*Apr. 22, 1977  
M.D. Anderson*

*Redrawn  
with out  
stamps*

~~TEMPERATURE CORRECTED  
AND HORIZONTALLY  
/ TAPED MEASUREMENTS~~

~~ROLAND W. ANDERSON  
COUNTY SURVEYOR  
ANOKA COUNTY, MINNESOTA~~

CENTER OF SEC. 30-31-23

found 3/4" pinched iron pipe  
flush with ground

found ~~from~~ <sup>from</sup> old M.H.D. ties

Replaced with Cast Iron Monument flush.

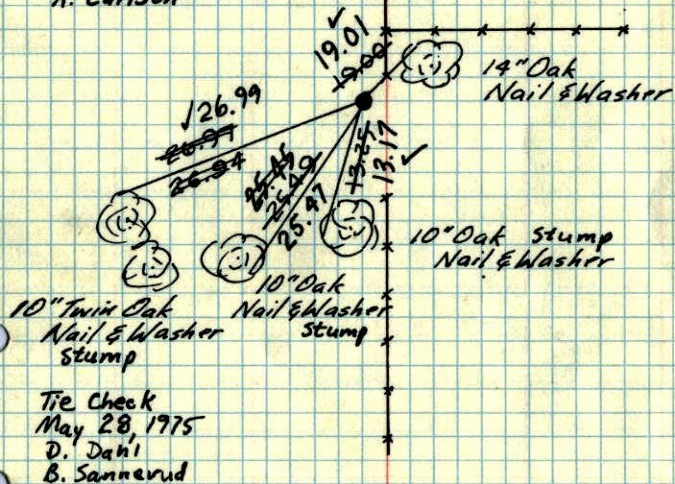
August 9, 1968  
D. Powell  
R. Olson  
P. Pich

November 8, 1961

M.D. Anderson  
G. Todd

Retie 6/15/64

M. D. Anderson  
R. Carlson



TEMPERATURE CORRECTED  
AND HORIZONTALLY  
/ TAPED MEASUREMENTS

ROLAND W. ANDERSON  
COUNTY SURVEYOR  
ANOKA COUNTY, MINNESOTA

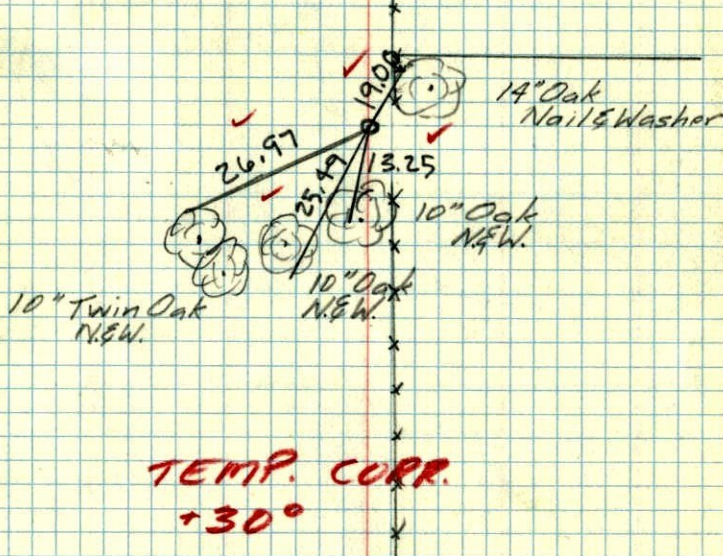
Center Sec. 30-31-23

found 3/4" pinched iron pipe  
flush with ground from  
old M.H.D. ties

Temp 30°

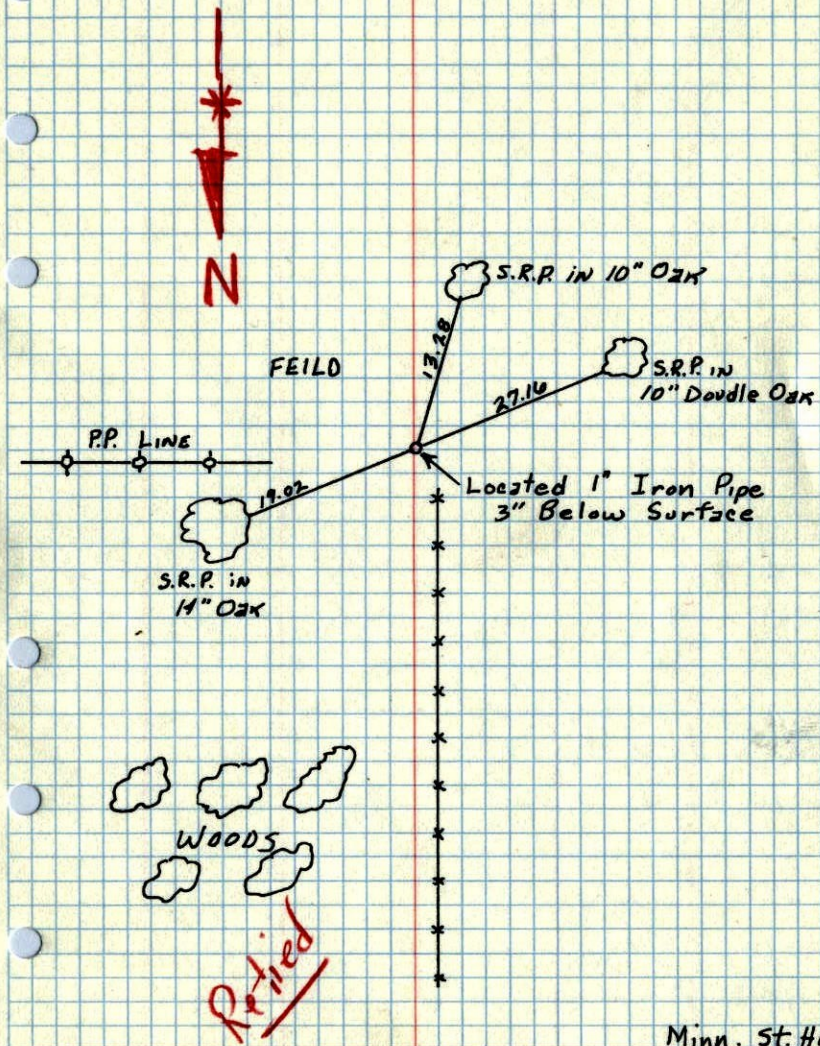
November 8, 1961

M.D. Anderson  
G. Todd



TEMP. CORR.  
+30°

CENTER Sec 30 - 31 - 23



Minn. St. Hwy.  
1958

CENTER SEC. 30

