

CERTIFICATE OF LOCATION OF GOVERNMENT CORNER

County of Anoka

State of Minnesota

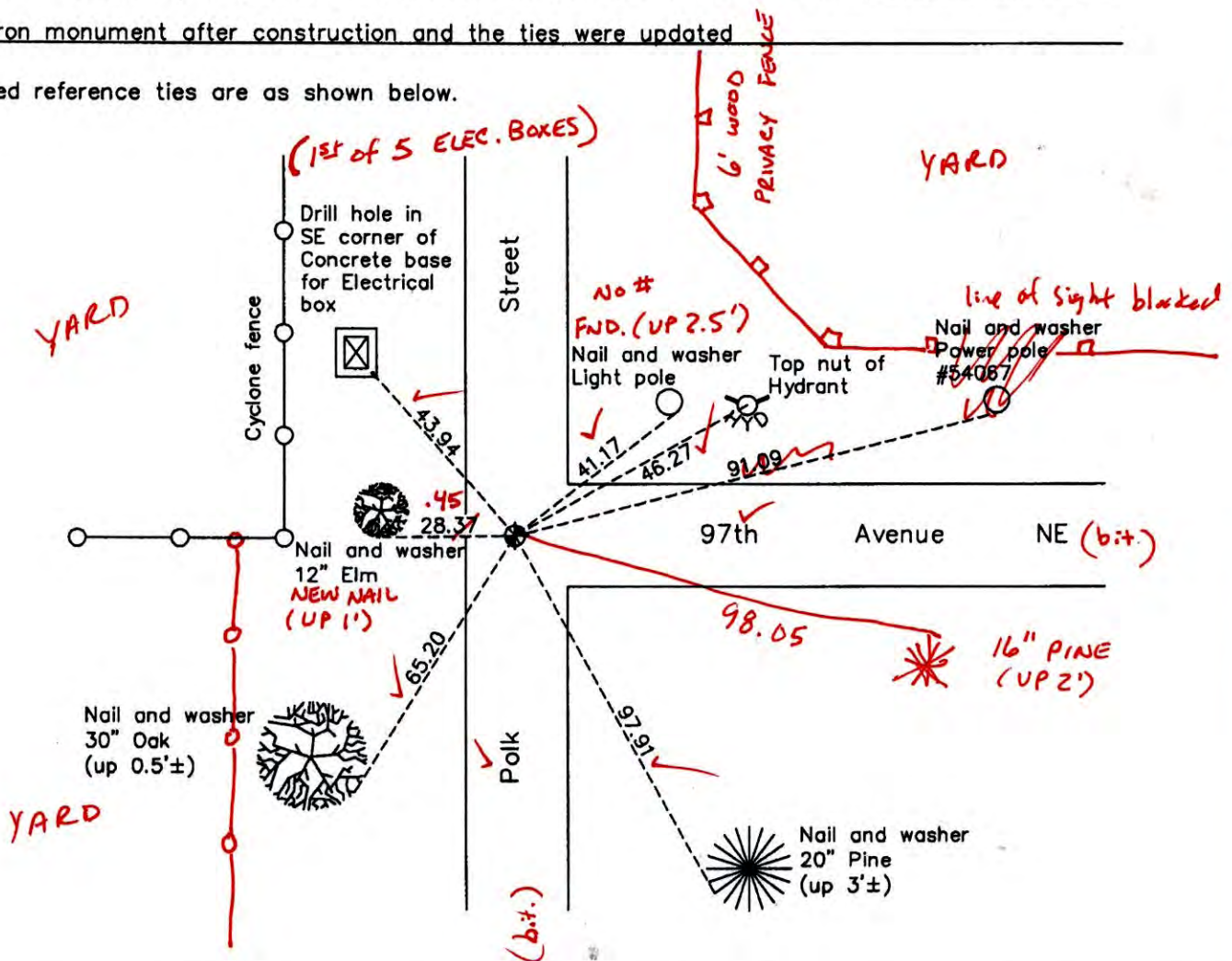
West 1/4 Corner of Sec. 29 Township 31 Range 23

On the 8th day of November, 1961, the described corner was evidenced by a concrete monument

and to perpetuate the location of said corner, at the exact location thereof, a permanent marker was placed consisting of a cast iron monument

AND on the 21st day of October, 2010, said permanent marker was replaced with a new cast iron monument after construction and the ties were updated

Updated reference ties are as shown below.



6-16-14
BK-SS
T/T
VRS

ANOKA COUNTY SURVEYOR

Revision Date

12/16/10

N.A.D. 1983 Coordinates
(1996 Adjustment)

| County Project Coordinates | |
|----------------------------|-------------|
| Northing | 140500.9615 |
| Easting | 505376.2452 |
| Date | 12/10/98 |

I hereby certify that this United States public land survey monument record is correct and complete to the best of my knowledge and belief.

Larry D. Hoium Date 12/16/10

Larry D. Hoium, Anoka County Surveyor

Minnesota License Number 18165

3DQ = 0.08 N = 140500.9426 E = 505376.3101

CERTIFICATE OF LOCATION OF GOVERNMENT CORNER

County of Anoka

State of Minnesota

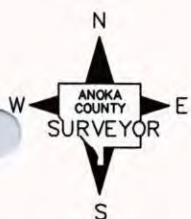
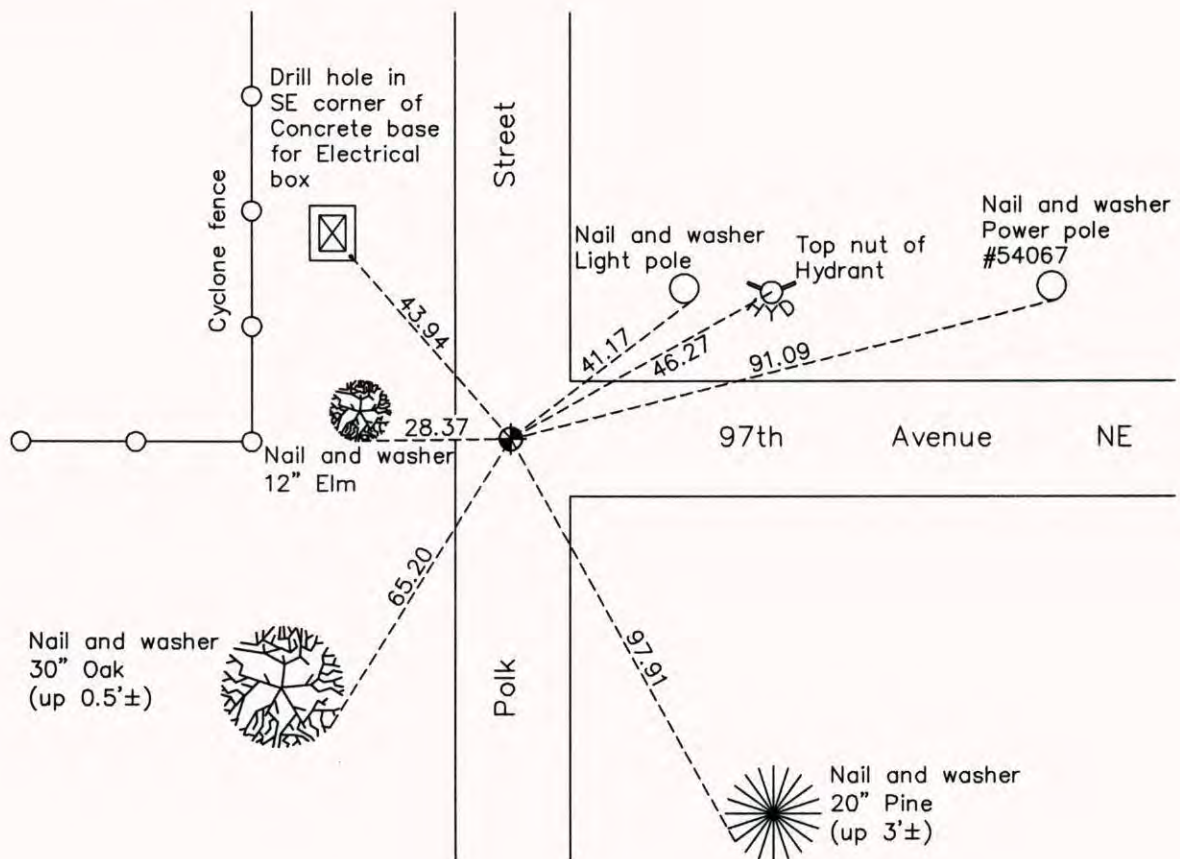
West 1/4 Corner of Sec. 29 Township 31 Range 23

On the 8th day of November, 1961, the described corner was evidenced by a concrete monument

and to perpetuate the location of said corner, at the exact location thereof, a permanent marker was placed consisting of a cast iron monument

AND on the 21st day of October, 2010, said permanent marker was replaced with a new cast iron monument after construction and the ties were updated

Updated reference ties are as shown below.



Revision Date

12/16/10

N.A.D. 1983 Coordinates
(1996 Adjustment)

| County Project Coordinates | |
|----------------------------|--------------------|
| Northing | <u>140500.9615</u> |
| Easting | <u>505376.2452</u> |
| Date | <u>12/10/98</u> |

I hereby certify that this United States public land survey monument record is correct and complete to the best of my knowledge and belief.

Date 12/16/10
 _____, Anoka County Surveyor
 Minnesota License Number 18165

CERTIFICATE OF LOCATION OF GOVERNMENT CORNER

County of Anoka

State of Minnesota

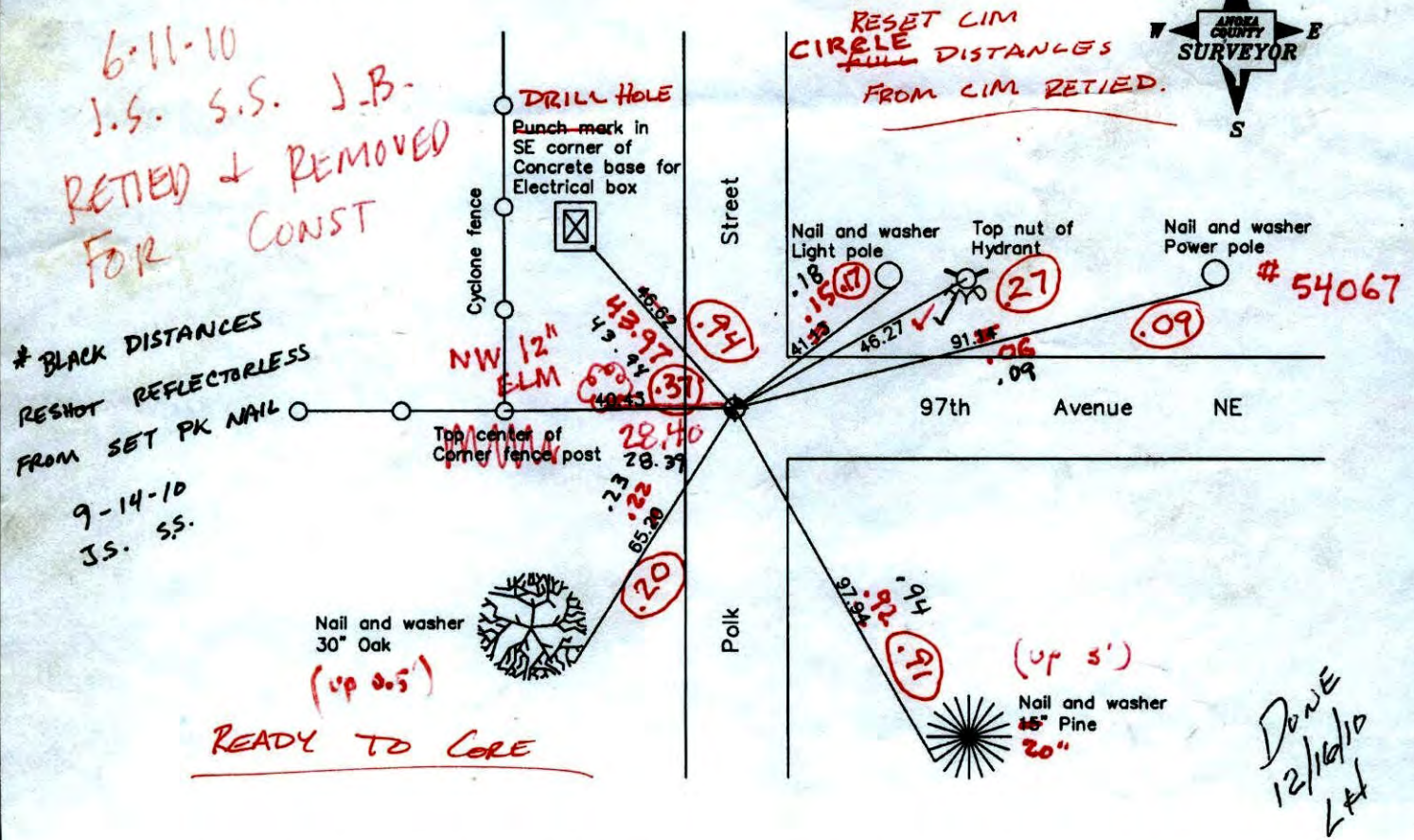
West 1/4 Corner of Sec. 29 Township 31 Range 23

On the 8th day of November, 1961, the described corner was evidenced by a concrete monument

and to perpetuate the location of said corner, at the exact location thereof, a permanent marker was placed consisting of a cast iron monument

AND on the 21st day of June, 2006, said permanent marker was found and the ties were updated

Updated reference ties are as shown below.



BLACK DISTANCES
RESHOT REFLECTORLESS
FROM SET PK NAIL
9-14-10
J.S. S.S.

| Revised date |
|--------------|
| 6/09/95 |
| 12/10/98 |
| 6/21/06 |
| |
| |

| N.A.D. 1983 Coordinates (1996 Adjustment) | |
|--|-------------|
| County Project Coordinates | |
| Northing | 140500.9615 |
| Easting | 505376.2452 |
| Date | 12/10/98 |

I hereby certify that this United States public land survey monument record is correct and complete to the best of my knowledge and belief.

Larry D. Hoium Date 6/21/06

Larry D. Hoium, Anoka County Surveyor
Minnesota License Number 18165

9-14-10
SHOT VRS

N
E

140501.0097
505376.2503

CERTIFICATE OF LOCATION OF GOVERNMENT CORNER

County of Anoka State of Minnesota

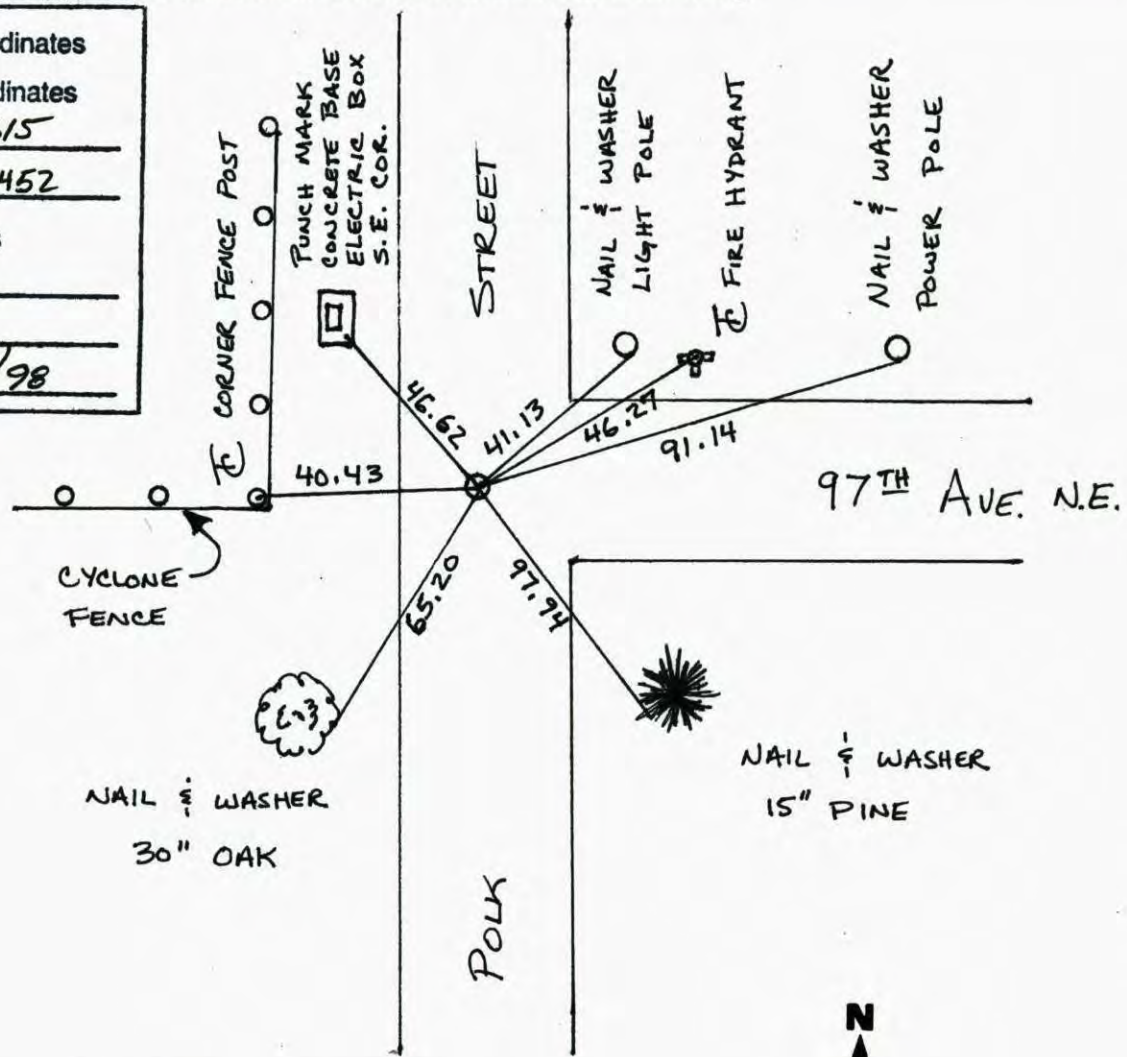
WEST 1/4 Corner of Sec. 29 Township 31 Range 23

I hereby certify that on the 8 day of Nov., 1961, I found the described corner which was evidenced by CONCRETE MONUMENT

and I further certify that to perpetuate the location of said corner, I did, at the exact location thereof, place a permanent marker consisting of CAST IRON MONUMENT

which reference or witness monuments are located in the manner following:

| | | |
|--------------------------|--------------------|--------------|
| N.A.D. | 1983 | Co-ordinates |
| County | Project | Co-ordinates |
| Northing | <u>140500.9615</u> | |
| Easting | <u>505376.2452</u> | |
| State Plane Co-ordinates | | |
| Y | _____ | |
| X | _____ | |
| Date | <u>12/10/98</u> | |



| Revised date | Revised date | Revised date |
|-----------------|--------------|--------------|
| <u>4-24-87</u> | | |
| <u>6-20-90</u> | | |
| <u>6-9-95</u> | | |
| <u>12-10-98</u> | | |
| <u>6-21-06</u> | | |
| | | |
| | | |



CERTIFICATE OF LOCATION OF GOVERNMENT CORNER

County of Anoka

State of Minnesota

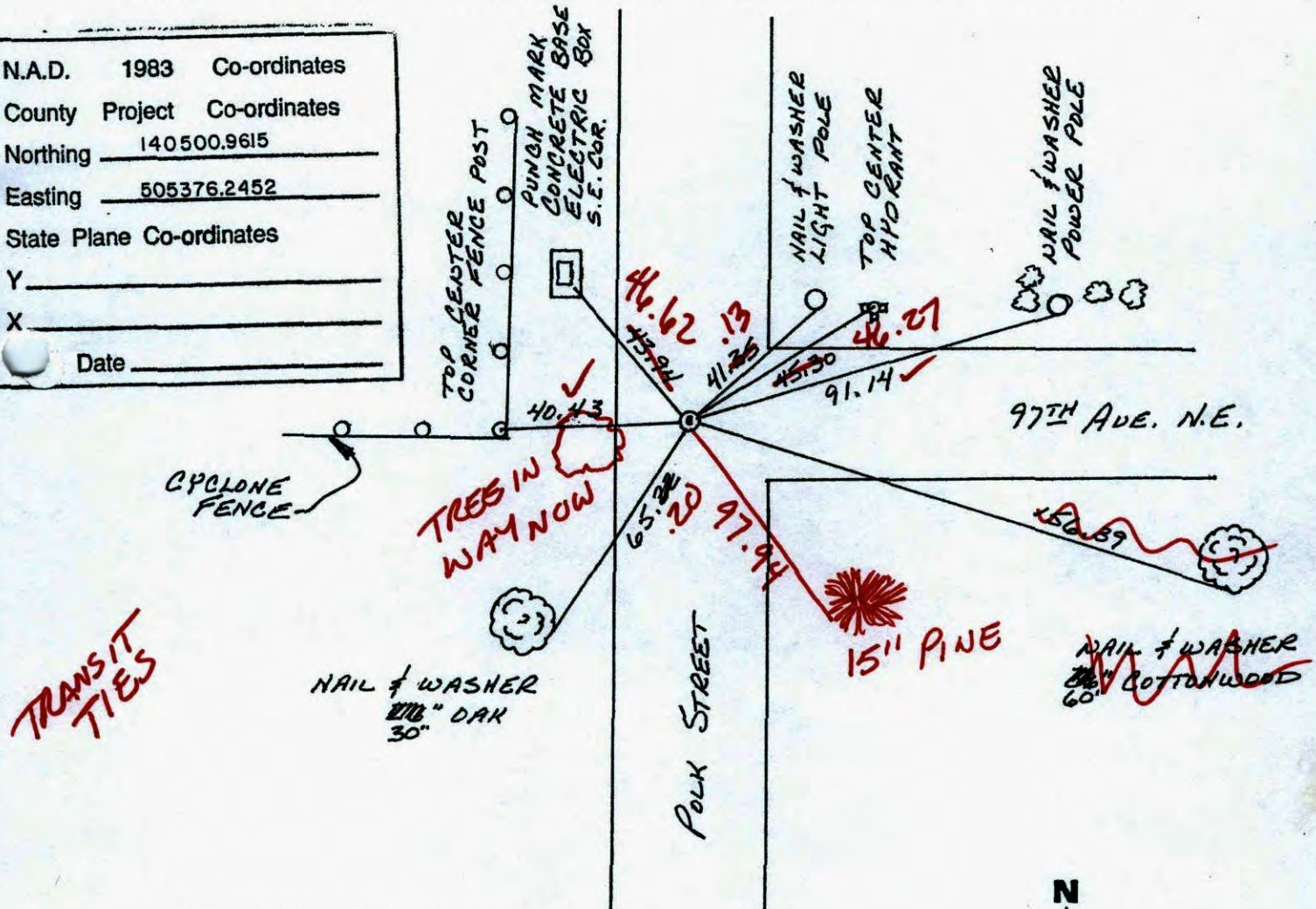
WEST 1/4 Corner of Sec. 29 Township 31 Range 23

I hereby certify that on the 8 day of NOVEMBER, 1961, I found the described corner which was evidenced by CONCRETE MONUMENT

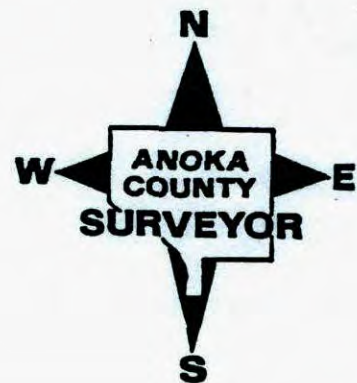
and I further certify that to perpetuate the location of said corner, I did, at the exact location thereof, place a permanent marker consisting of CAST IRON MONUMENT

which reference or witness monuments are located in the manner following:

| | | |
|--------------------------|--------------------|--------------|
| N.A.D. | 1983 | Co-ordinates |
| County Project | | Co-ordinates |
| Northing | <u>140500.9615</u> | |
| Easting | <u>505376.2452</u> | |
| State Plane Co-ordinates | | |
| Y | | |
| X | | |
| Date | | |



| Revised date | Revised date | Revised date |
|-----------------|--------------|--------------|
| <u>4-24-87</u> | | |
| <u>6-20-90</u> | | |
| <u>6-9-95</u> | | |
| <u>12-10-98</u> | | |
| <u>6-21-06</u> | | |
| | | |
| | | |



CERTIFICATE OF LOCATION OF GOVERNMENT CORNER

County of Anoka

State of Minnesota

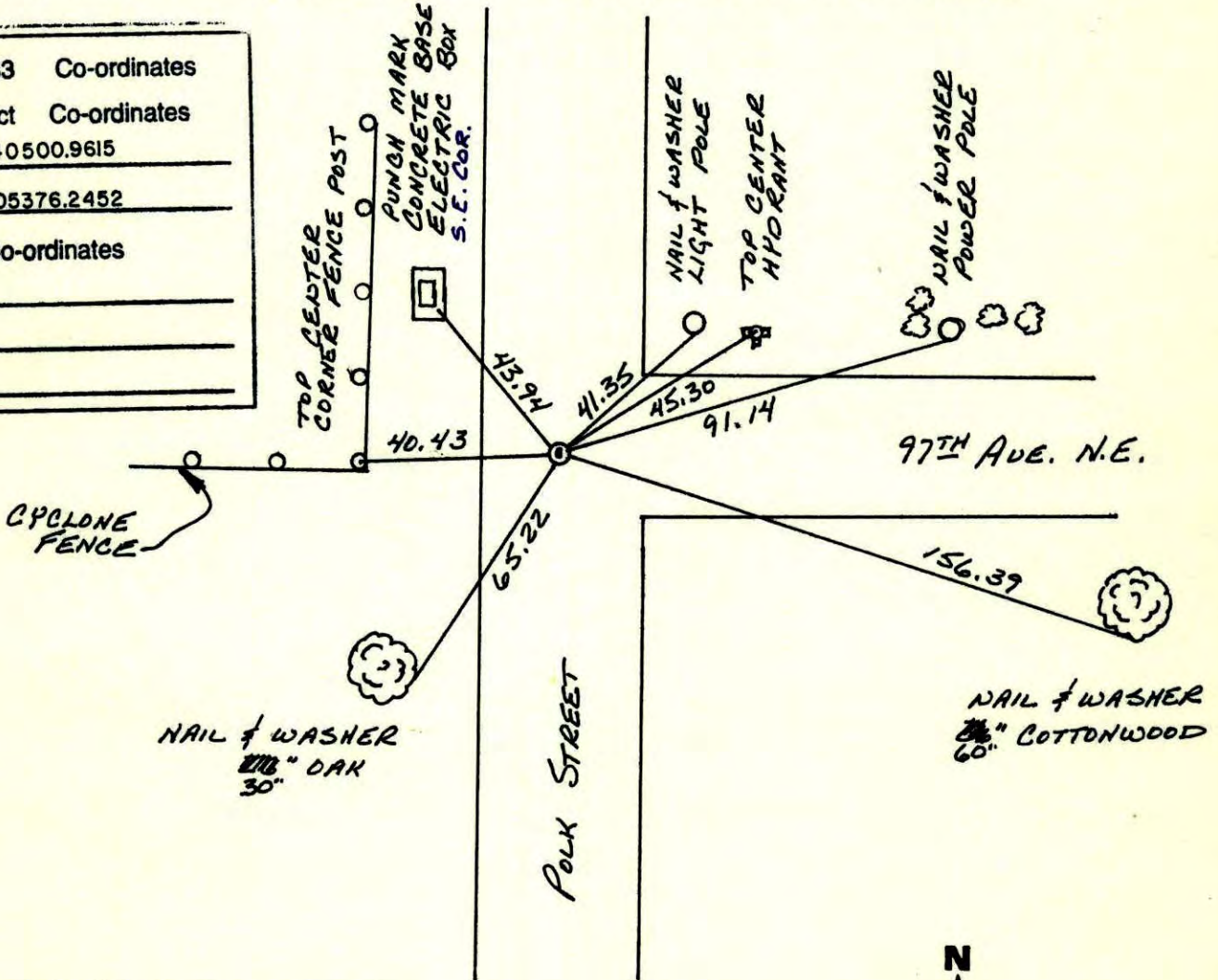
WEST 1/4 Corner of Sec. 29 Township 31 Range 23

I hereby certify that on the 8 day of NOVEMBER, 1961, I found the described corner which was evidenced by CONCRETE MONUMENT

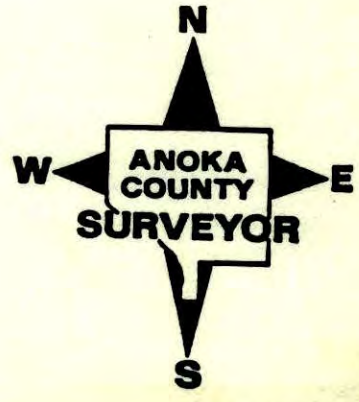
and I further certify that to perpetuate the location of said corner, I did, at the exact location thereof, place a permanent marker consisting of CAST IRON MONUMENT

which reference or witness monuments are located in the manner following:

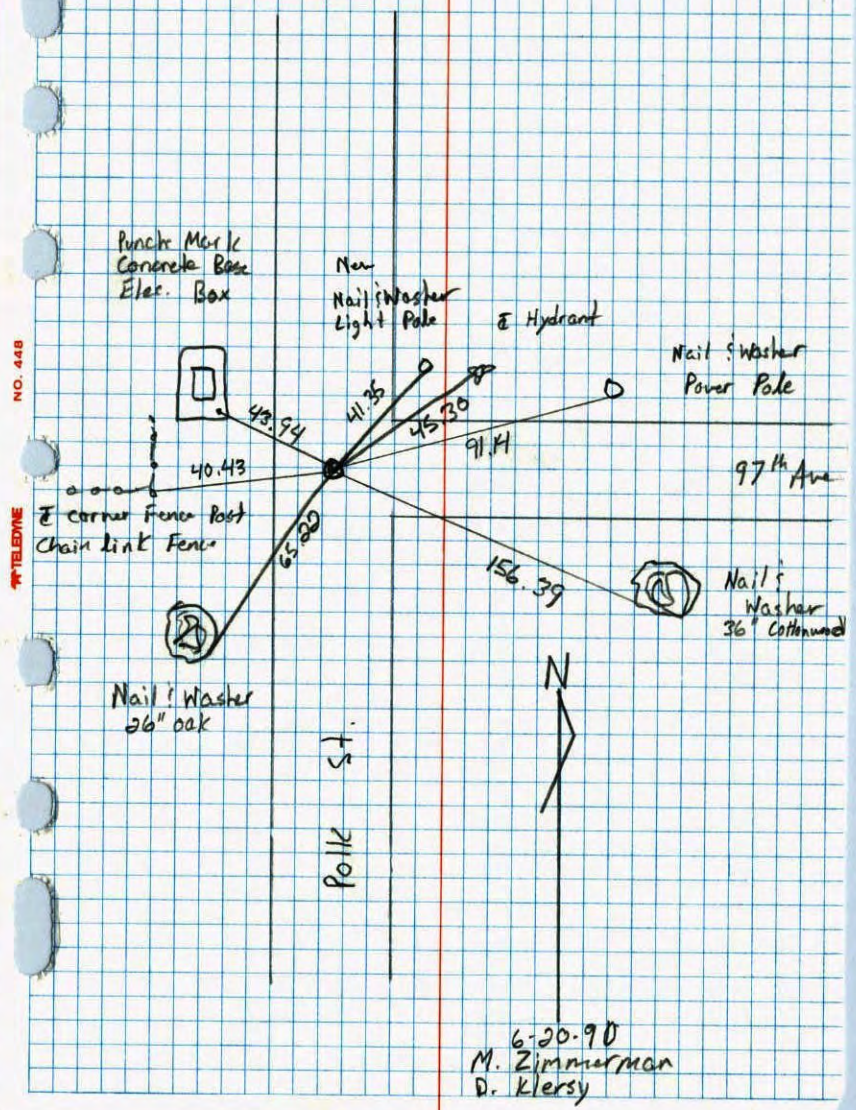
| | | |
|--------------------------|--------------------|--------------|
| N.A.D. | 1983 | Co-ordinates |
| County Project | Co-ordinates | |
| Northing | <u>140500.9615</u> | |
| Easting | <u>505376.2452</u> | |
| State Plane Co-ordinates | | |
| Y | _____ | |
| X | _____ | |
| Date | _____ | |



| Revised date | Revised date | Revised date |
|-----------------|--------------|--------------|
| <u>4-24-87</u> | | |
| <u>6-20-90</u> | | |
| <u>6-9-95</u> | | |
| <u>12-10-98</u> | | |
| | | |
| | | |
| | | |



West 1/4 Corner Sec. 29 T31 R23
 Retied Cast Iron Monument

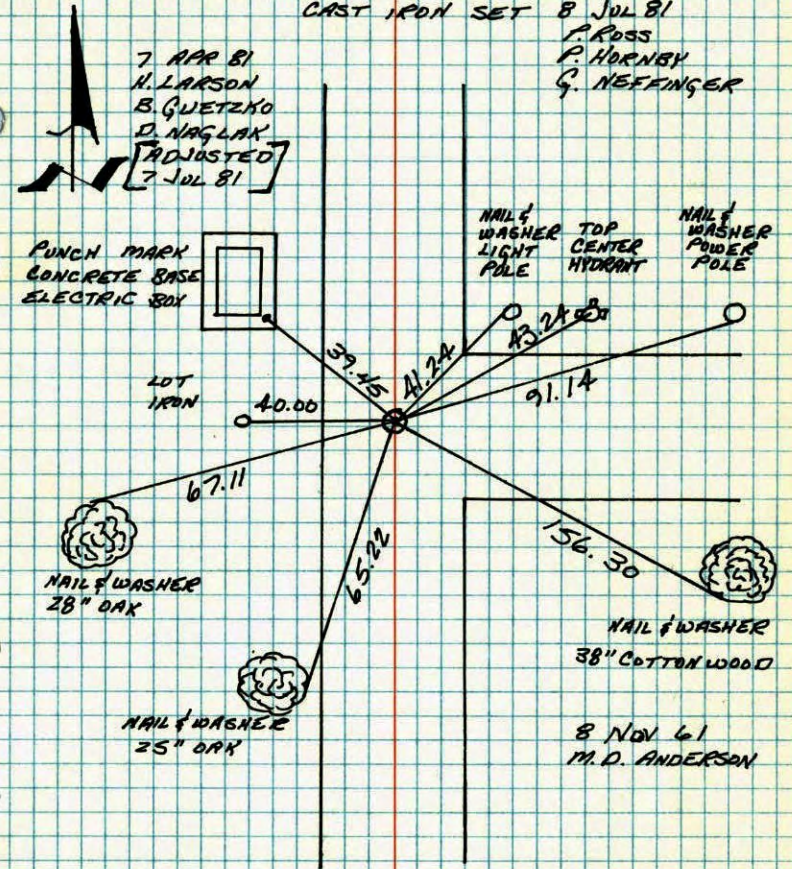


6-20-90
 M. Zimmerman
 D. Klersy

W 1/4 CORNER SECTION 29-T31-R23

RESET CORNER FROM CONSTRUCTION TIES (LOT IRON TO THE WEST). SET AND TIED PK. PK'S 2.00' NORTH AND EAST.

CAST IRON SET 8 JUL 81
 P. ROSS
 P. HORNBY
 G. NEFFINGER



TEMPERATURE CORRECTED
 AND HORIZONTALLY
 TAPED MEASUREMENTS

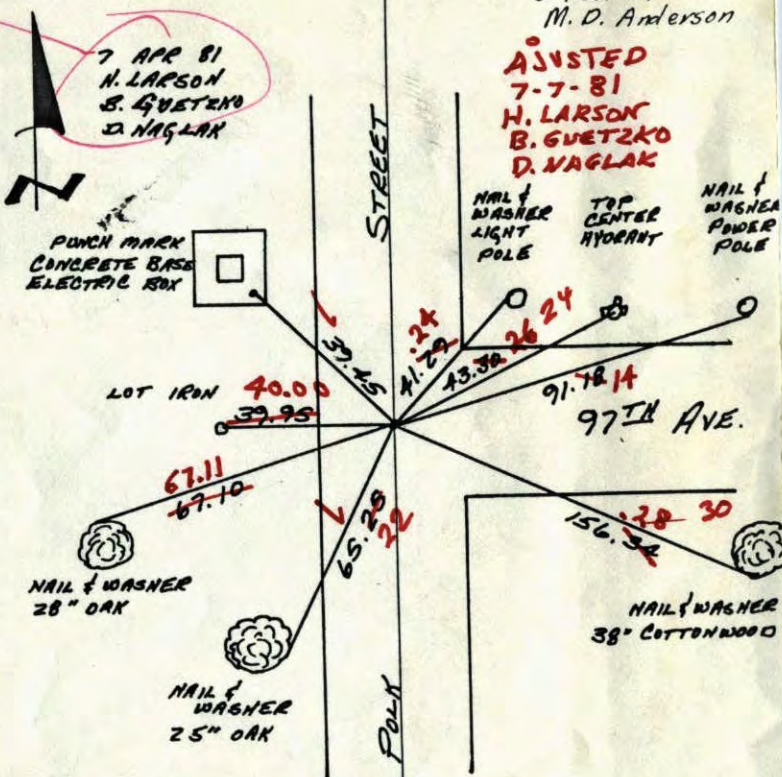
ROLAND W. ANDERSON
 COUNTY SURVEYOR
 ANOKA COUNTY, MINNESOTA

8 NOV 61
 M. D. ANDERSON

W 1/4 CORNER SECTION 29-T31-R23

RESET CORNER FROM CONSTRUCTION TIES. (LOT IRON TO THE WEST). SET AND TIED PK. PK'S 2.00' NORTH AND EAST.

8 Nov. 61
M. D. Anderson



7 APR 81
H. LARSON
B. GUETZKO
D. NAGLAK

ADJUSTED
7-7-81
H. LARSON
B. GUETZKO
D. NAGLAK

PUNCH MARK
CONCRETE BASE
ELECTRIC BOX

NAIL & WASHER
LIGHT
POLE
TOP
CENTER
HYDRANT
NAIL & WASHER
POWER
POLE

LOT IRON 40.00
37.95

91.78 14
97TH AVE.

NAIL & WASHER
28" OAK

NAIL & WASHER
38" COTTONWOOD

NAIL & WASHER
25" OAK

7-8-81 ~~Set~~ Cast Iron
P. Ross in place of P.K.
P. Hornby
G. Meffinger

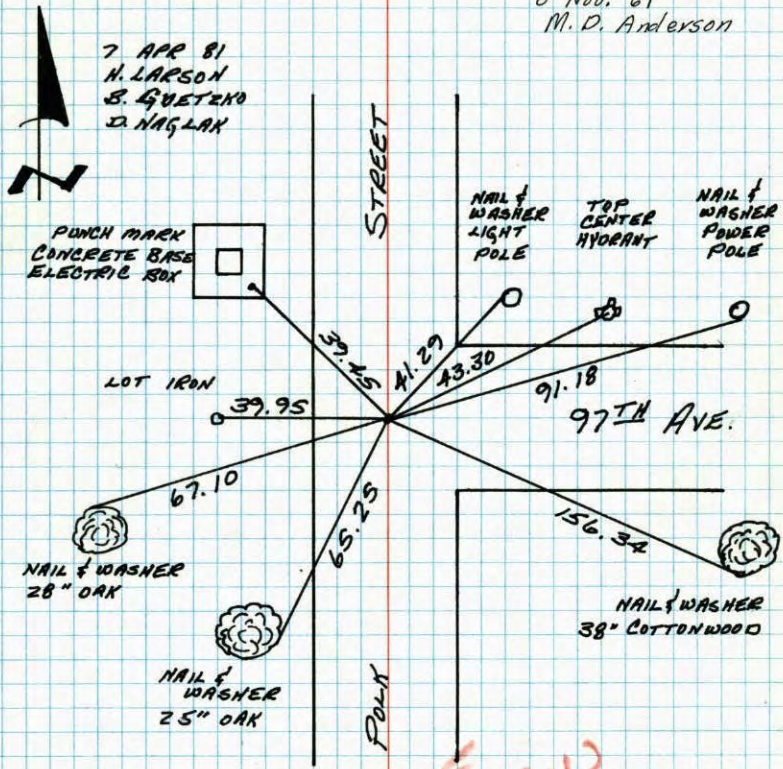
TEMPERATURE CORRECTED
AND HORIZONTALLY
TAPED MEASUREMENTS

ROLAND W. ANDERSON
COUNTY SURVEYOR
ANOKA COUNTY, MINNESOTA

W 1/4 CORNER SECTION 29-T31-R23

RESET CORNER FROM CONSTRUCTION TIES. (LOT IRON TO THE WEST). SET AND TIED PK. PK'S 2.00' NORTH AND EAST.

8 Nov. 61
M. D. Anderson



7 APR 81
H. LARSON
B. GUETZKO
D. NAGLAK

PUNCH MARK
CONCRETE BASE
ELECTRIC BOX

NAIL & WASHER
LIGHT
POLE
TOP
CENTER
HYDRANT
NAIL & WASHER
POWER
POLE

LOT IRON 39.95

91.18
97TH AVE.

NAIL & WASHER
28" OAK

NAIL & WASHER
38" COTTONWOOD

NAIL & WASHER
25" OAK

SEE NEW
TIE BOOK

TEMPERATURE CORRECTED
AND HORIZONTALLY
TAPED MEASUREMENTS

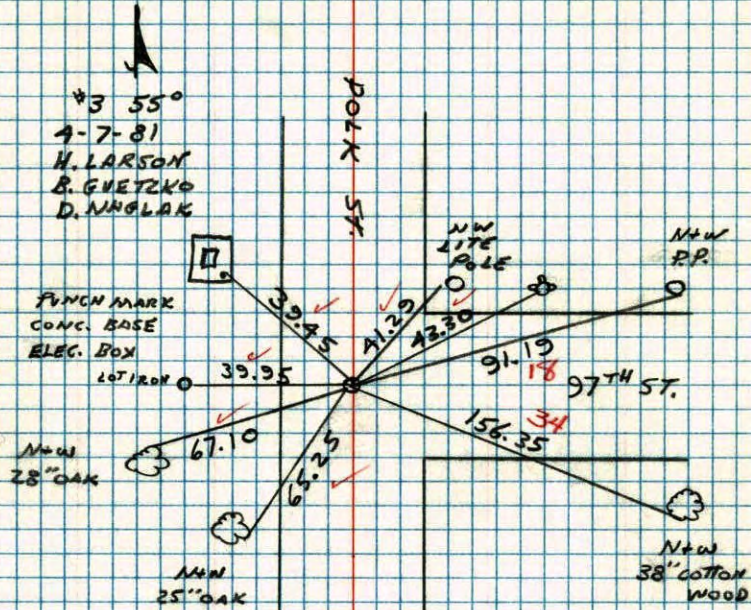
ROLAND W. ANDERSON
COUNTY SURVEYOR
ANOKA COUNTY, MINNESOTA

W 1/4 CORNER SECTION 29 T31 R23

RESET CORNER FROM CONSTRUCTION

TIES (LOT IRON TO THE WEST)

SET AND TIED PK, PK^c 2.00' N. & E.



NO. 448

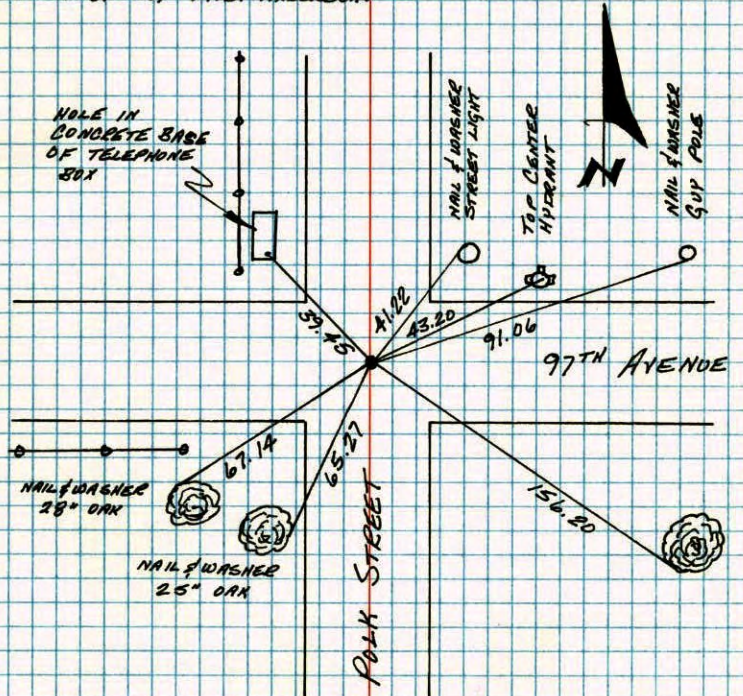
TELEPHONE

W 1/4 CORNER SECTION 29 T31 R23

P.K. NAIL ON ROAD SURFACE. ALL TIES GONE SET NEW TIES TO P.K. NAIL.

13 JUN 80
B. STEPHENS
P. ROSS
P. HOENSBY

CONCRETE MONUMENT ORIGINALLY AT LOCATION. FOUND 8 NOV 61 BY M.D. ANDERSON.



NO. 448

TELEPHONE

TEMPERATURE CORRECTED
AND HORIZONTALLY
TAPED MEASUREMENTS

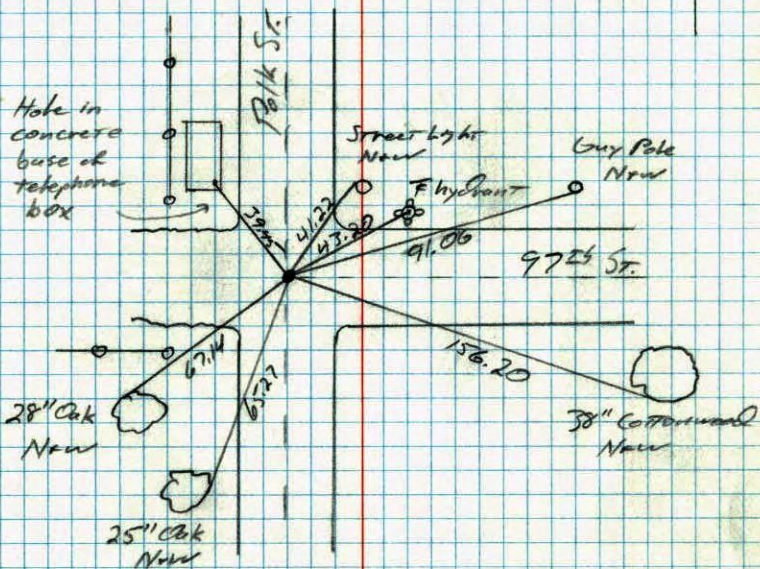
ROLAND W. ANDERSON
COUNTY SURVEYOR
ANOKA COUNTY, MINNESOTA

88

W/4 Cor. Sec. 29 T-31 R-23

P.K. nail on road surface. All ties gone.
Set new ties to P.K. nail.

6-13-80 #5
B. Stephens
P. Ross
P. Hornby



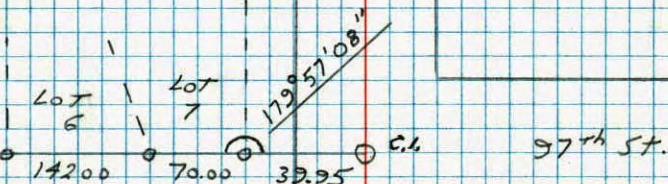
NO. 448

TELEPHONE

W/4 COR. SECTION 29 T31R23

ADDITIONAL TIES FOR
CONSTRUCTION.

*1 90°
9-4-79
H. Larson
B. Gutzko



NO. 448

TELEPHONE

POLK ST

W 1/4 Cor. Sec. 29-31-23

Concrete Monument gone

3/4" iron pipe in place down 2"

P.K. nail on surface Found 4"x4" Concrete Monument down 0.8'. Set Cast Iron Monument on top of concrete flush. PK's 2.00' North & East.

9/6/68

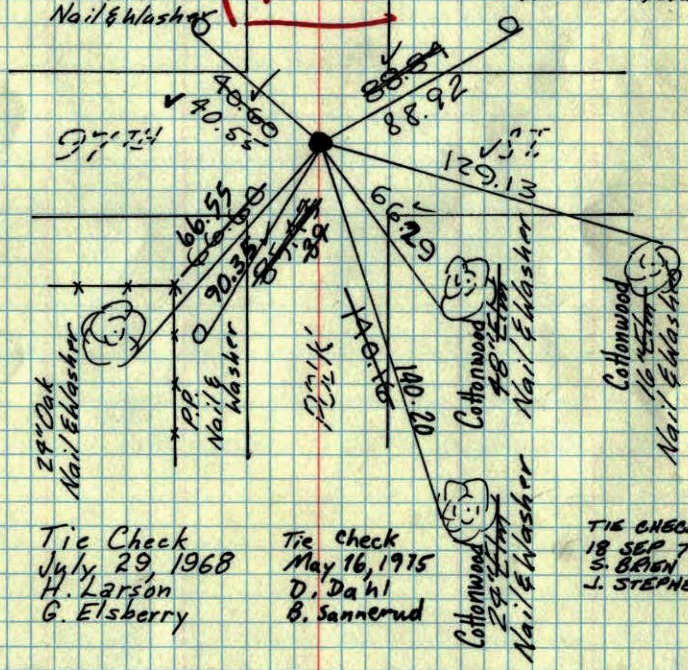
Tie check 9-23-71 H. Larson F. Waks M. Jensen T.P. Nail & Washer

November 8, 1961 M.D. Anderson G. Todd

Retie 6/12/64

M.D. Anderson R. Carlson T.P. Nail & Washer

See New Ties



Tie Check July 29, 1968 H. Larson G. Elsberry

Tie check May 16, 1975 D. Dahl B. Sannerud

TIE CHECK 18 SEP 77 S. BRAUN J. STEPHENS

TEMPERATURE CORRECTED AND HORIZONTALLY TAPED MEASUREMENTS ROLAND W. ANDERSON COUNTY SURVEYOR ANOKA COUNTY, MINNESOTA

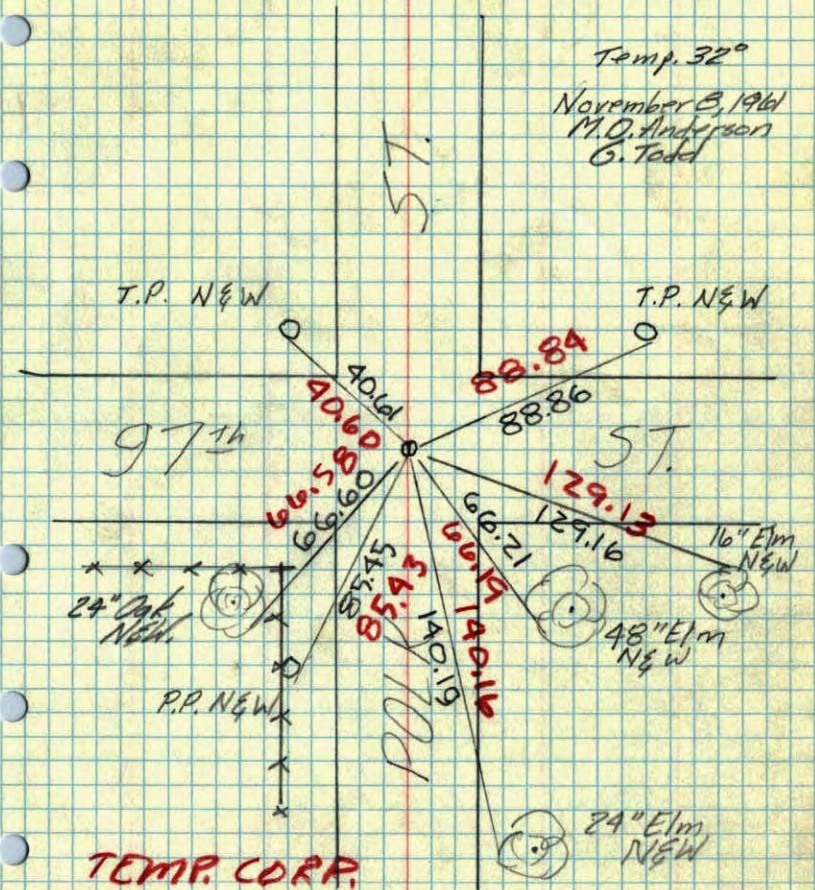
W 1/4 Cor. Sec. 29-31-23

Concrete Mon. gone

3/4 inch pinched iron pipe in place down 2"

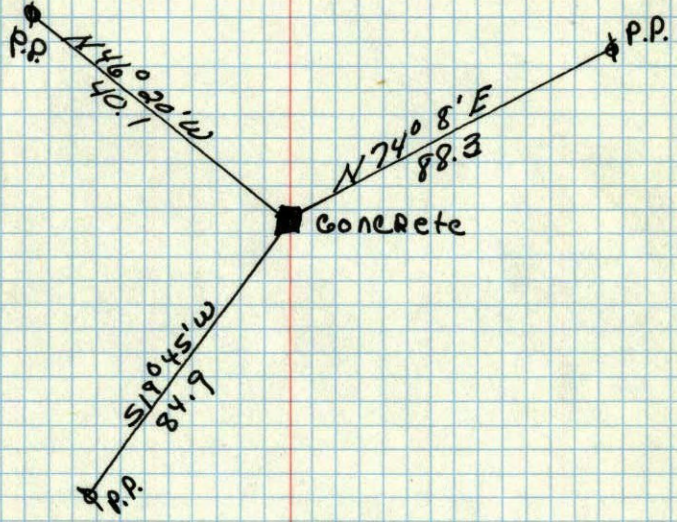
Temp. 32°

November 8, 1961 M.D. Anderson G. Todd



TEMP. CORR. +32°

W 1/4 Cor. of Sec. 29 T.31 R.23 ✓
Conc. Mon.



Retired

July 21, 1948
Cartwright