

CERTIFICATE OF LOCATION OF GOVERNMENT CORNER

County of Anoka

State of Minnesota

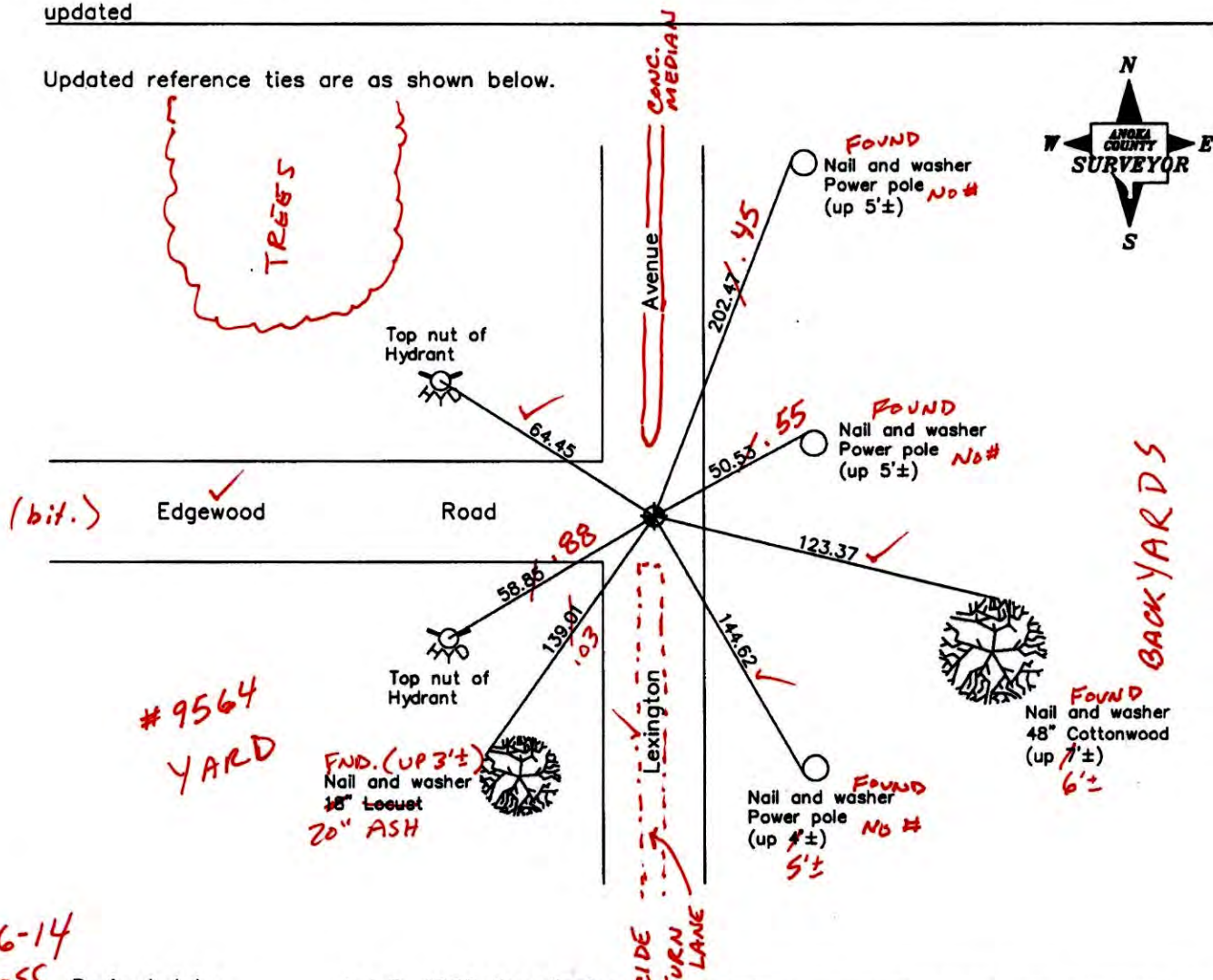
West 1/4 Corner of Sec. 25 Township 31 Range 23

On the 28th day of September, 1971, the described corner was evidenced by a concrete monument

and to perpetuate the location of said corner, at the exact location thereof, a permanent marker was placed consisting of a cast iron monument

AND on the 12th day of June, 2006, said permanent marker was found and the ties were updated

Updated reference ties are as shown below.



6-26-14
BK-55
T/T

Revised date
6/26/95
10/19/98
6/12/06

N.A.D. 1983 Coordinates (1996 Adjustment)	
County Project Coordinates	
Northing	140384.6756
Easting	526609.8560
Date	10/19/98

I hereby certify that this United States public land survey monument record is correct and complete to the best of my knowledge and belief.

Date 6/12/06

Larry D. Holium, Anoka County Surveyor
 Minnesota License Number 18165

CERTIFICATE OF LOCATION OF GOVERNMENT CORNER

County of Anoka

State of Minnesota

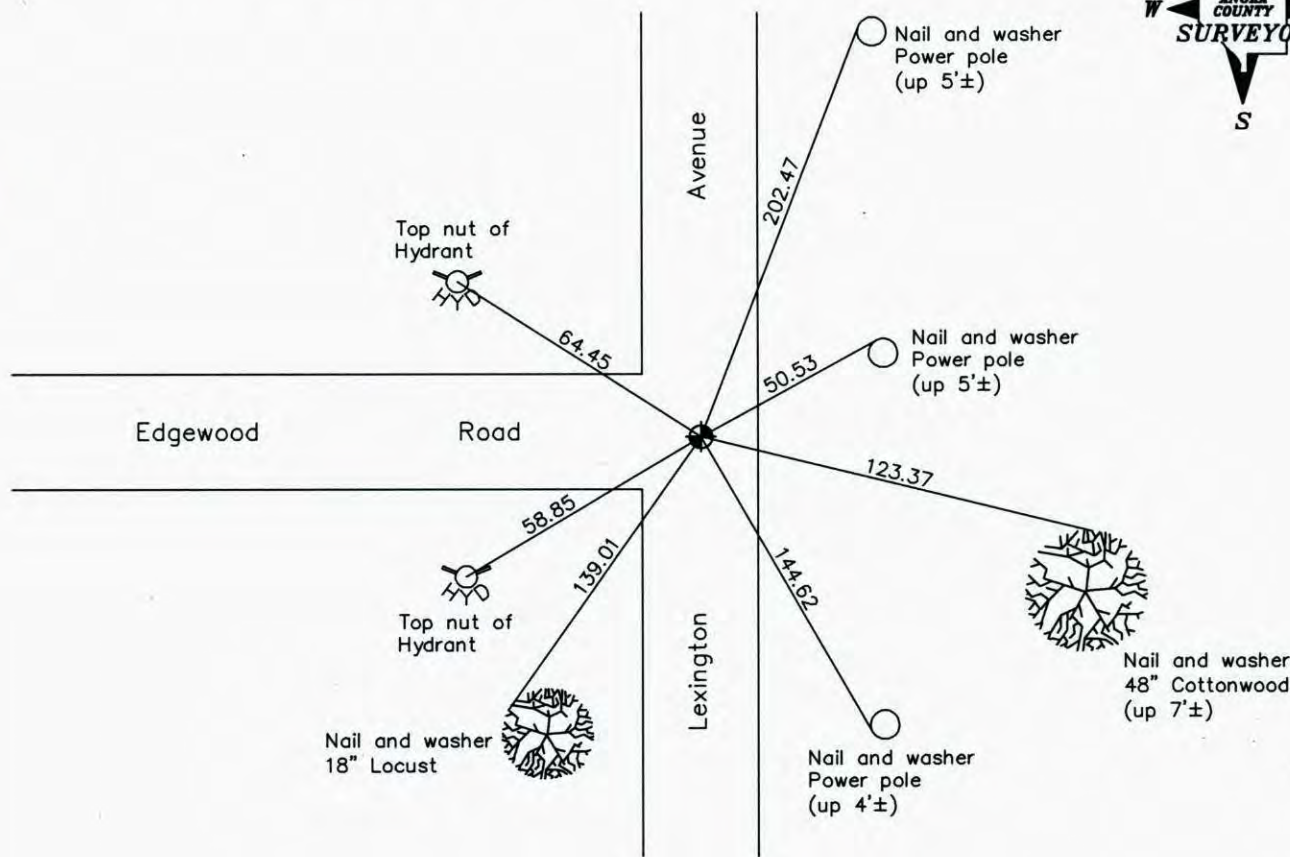
West 1/4 Corner of Sec. 25 Township 31 Range 23

On the 28th day of September, 1971, the described corner was evidenced by a concrete monument

and to perpetuate the location of said corner, at the exact location thereof, a permanent marker was placed consisting of a cast iron monument

AND on the 12th day of June, 2006, said permanent marker was found and the ties were updated

Updated reference ties are as shown below.



Revised date
6/26/95
10/19/98
6/12/06

N.A.D. 1983 Coordinates (1996 Adjustment)	
County Project Coordinates	
Northing	<u>140384.6756</u>
Easting	<u>526609.8560</u>
Date	<u>10/19/98</u>

I hereby certify that this United States public land survey monument record is correct and complete to the best of my knowledge and belief.

Larry D. Hoium Date 6/12/06

Larry D. Hoium, Anoka County Surveyor

Minnesota License Number 18165

CERTIFICATE OF LOCATION OF GOVERNMENT CORNER

County of Anoka

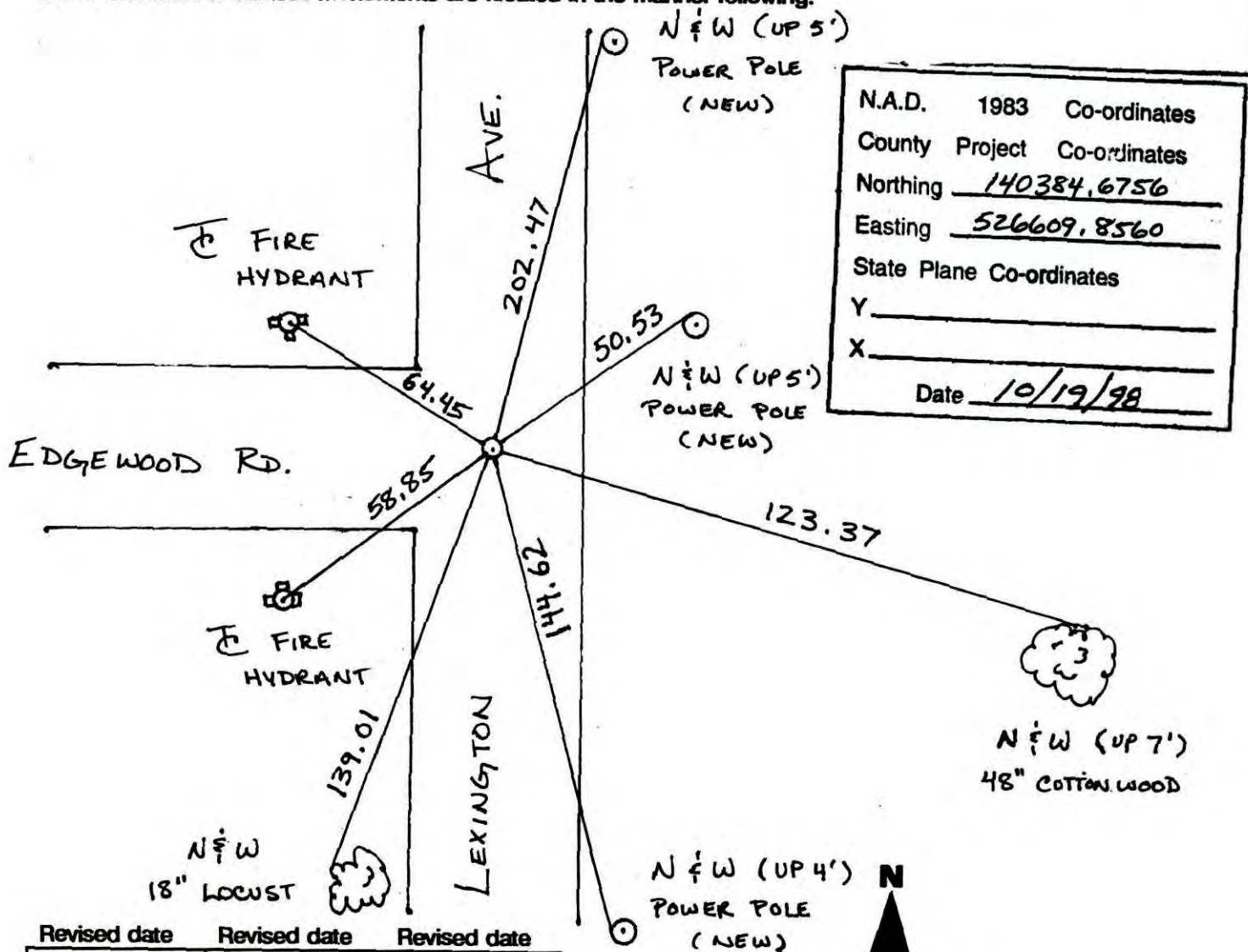
State of Minnesota

WEST 1/4 Corner of Sec. 25 Township 31 Range 23

I hereby certify that on the 28 day of SEPT., 1971, I found the described corner which was evidenced by CONCRETE MONUMENT

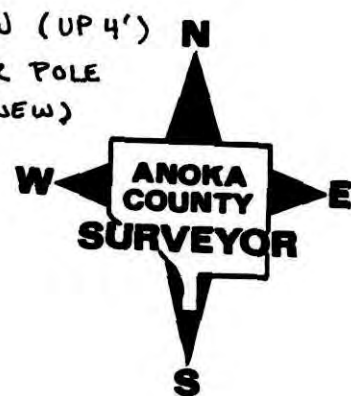
and I further certify that to perpetuate the location of said corner, I did, at the exact location thereof, place a permanent marker consisting of CAST IRON MONUMENT

which reference or witness monuments are located in the manner following:



N.A.D.	1983	Co-ordinates
County	Project	Co-ordinates
Northing		<u>140384.6756</u>
Easting		<u>526609.8560</u>
State Plane Co-ordinates		
Y		_____
X		_____
Date <u>10/19/98</u>		

Revised date	Revised date	Revised date
7-19-90		
6-26-95		
10-19-98		
6-12-06		



CERTIFICATE OF LOCATION OF GOVERNMENT CORNER

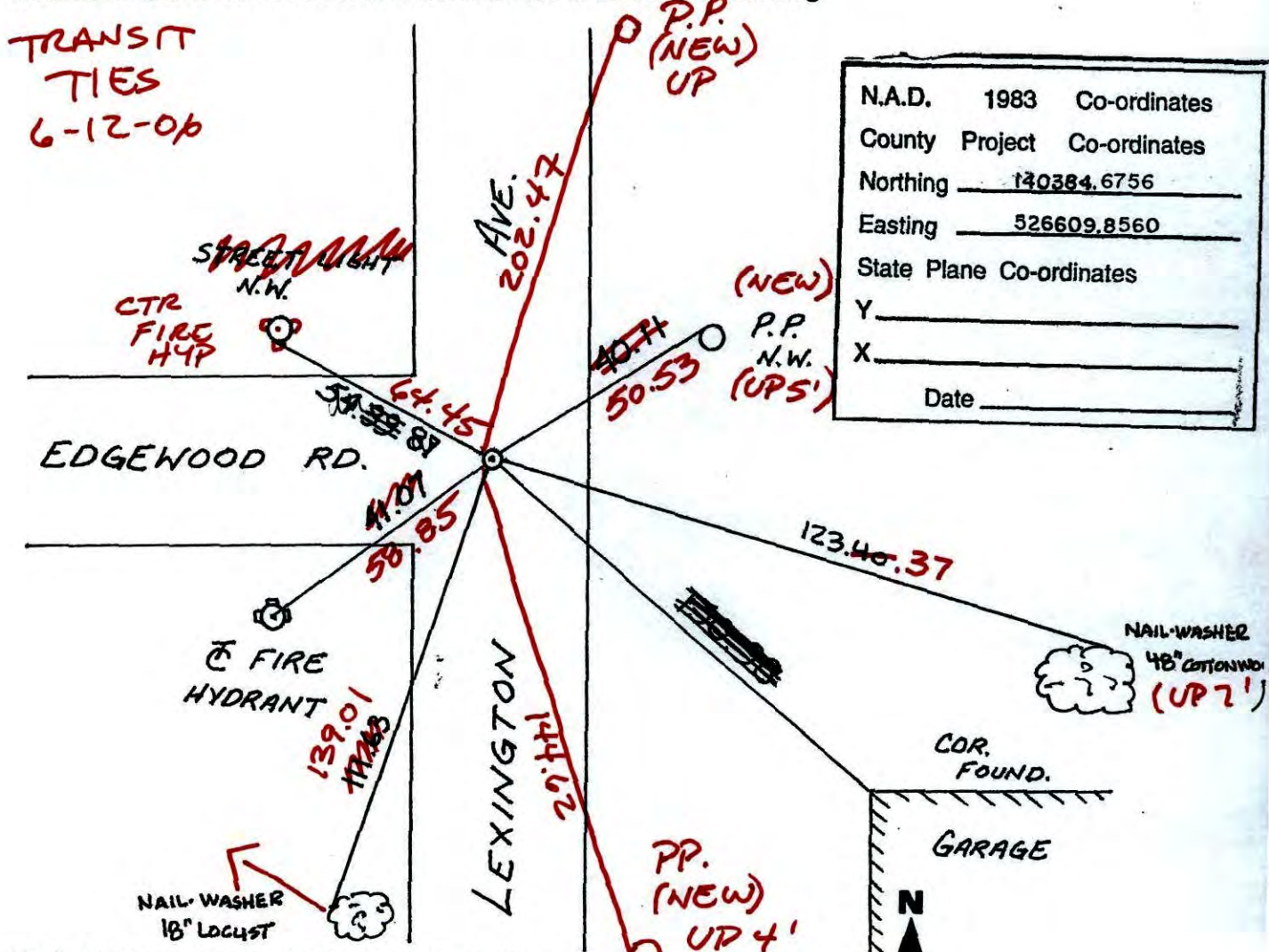
County of Anoka State of Minnesota

WEST QTR. Corner of Sec. 25 Township 31 Range 23

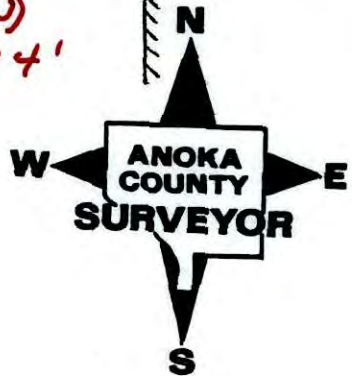
I hereby certify that on the 28 day of SEPT., 19 71, I found the described corner which was evidenced by CONCRETE MON.

and I further certify that to perpetuate the location of said corner, I did, at the exact location thereof, place a permanent marker consisting of CAST IRON MON.

which reference or witness monuments are located in the manner following:



Revised date	Revised date	Revised date
7-19-90		
6-26-95		
10-19-98		
6-12-06		



CERTIFICATE OF LOCATION OF GOVERNMENT CORNER

County of Anoka

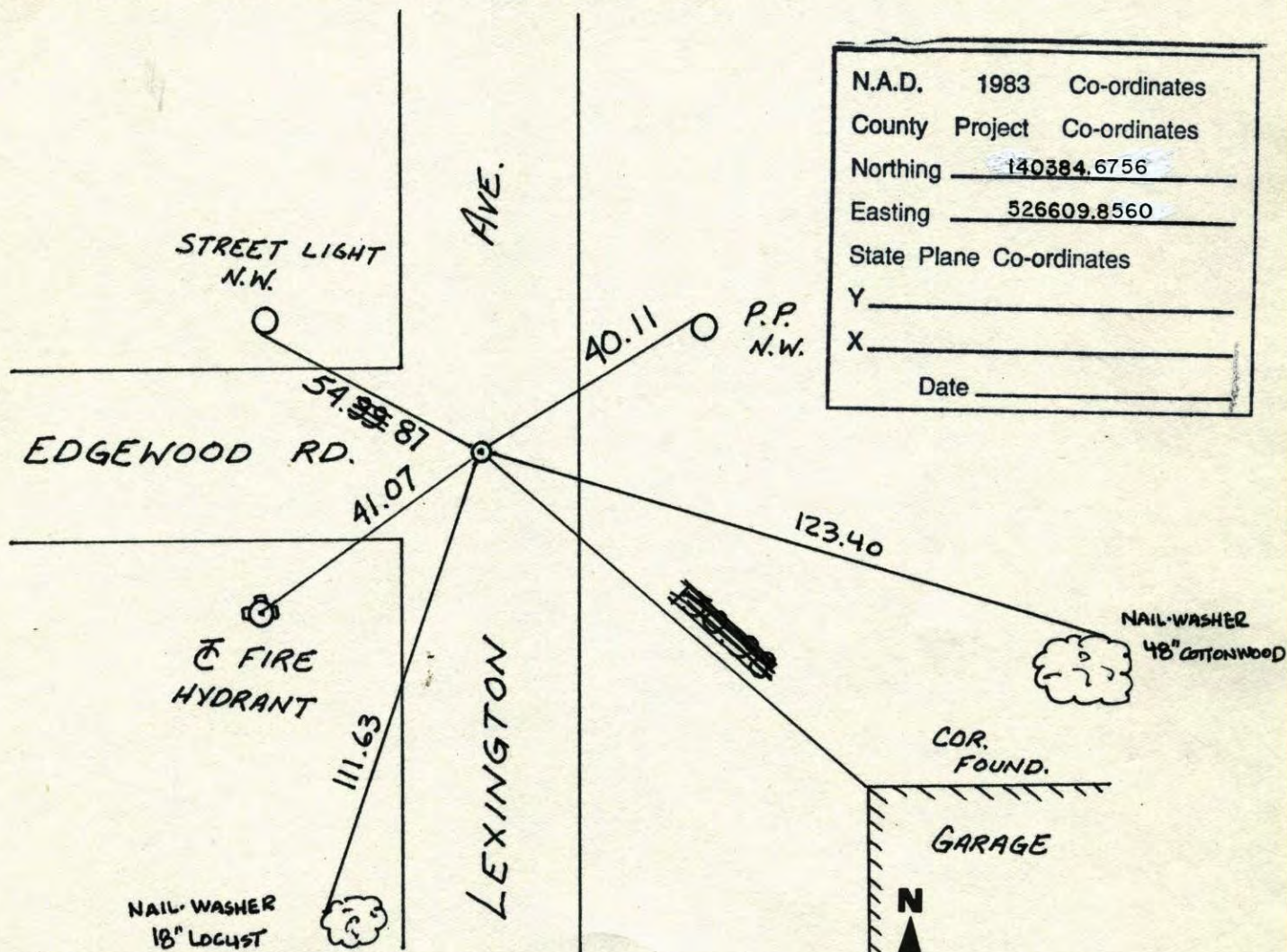
State of Minnesota

WEST QTR. Corner of Sec. 25 Township 31 Range 23

I hereby certify that on the 28 day of SEPT., 19 71, I found the described corner which was evidenced by CONCRETE MON.

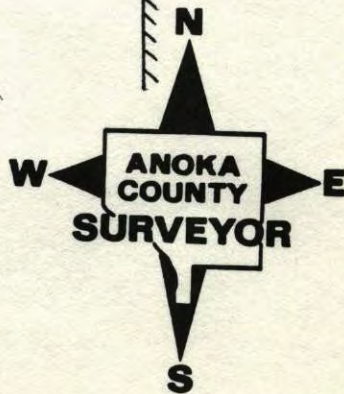
and I further certify that to perpetuate the location of said corner, I did, at the exact location thereof, place a permanent marker consisting of CAST IRON MON.

which reference or witness monuments are located in the manner following:



N.A.D.	1983	Co-ordinates
County	Project	Co-ordinates
Northing	<u>140384.6756</u>	
Easting	<u>526609.8560</u>	
State Plane Co-ordinates		
Y	_____	
X	_____	
Date	_____	

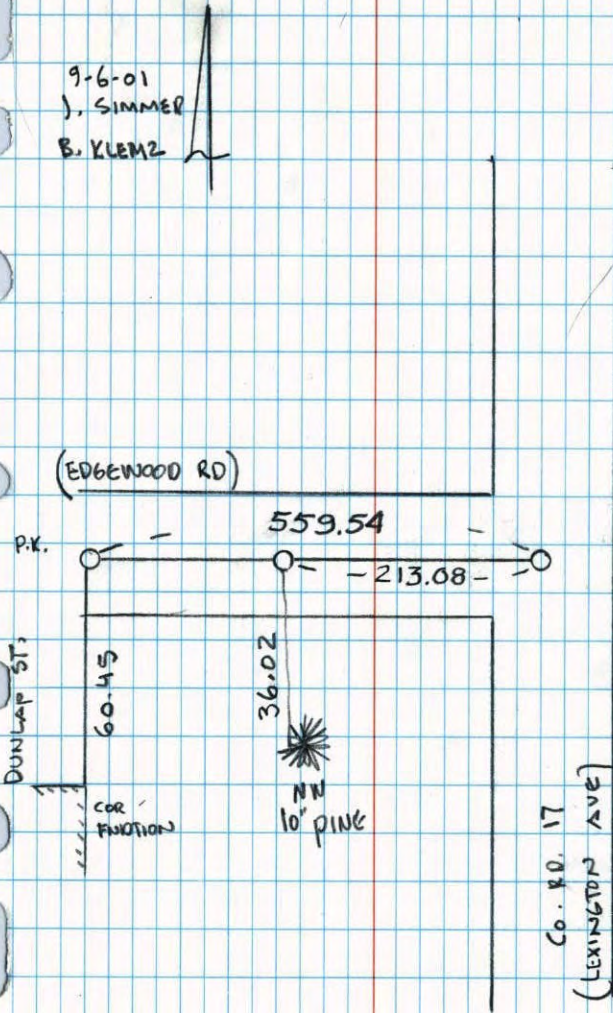
Revised date	Revised date	Revised date
<u>7-19-90</u>		
<u>6-26-95</u>		
<u>10-19-98</u>		



W 1/4 COR SEC 25 T 31 R 23

RETIED & REMOVED FOR CONST.

9-6-01
J. SIMMER
B. KLEMZ

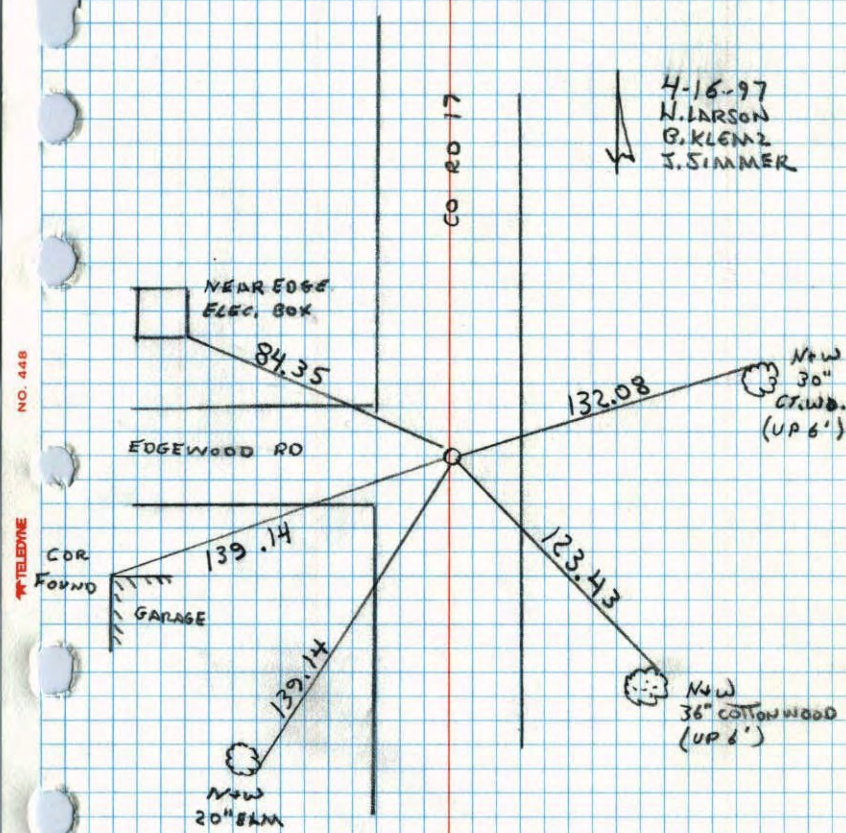


NATIONAL PRINTFAST NO. 446

WEST 1/4 CORNER SECTION 25 T 31 R 23

RETIED FOR CONSTRUCTION

4-16-97
N. LARSON
B. KLEMZ
J. SIMMER



NATIONAL PRINTFAST NO. 446

W 1/4 CORNER SECTION 25 - T31 - R23

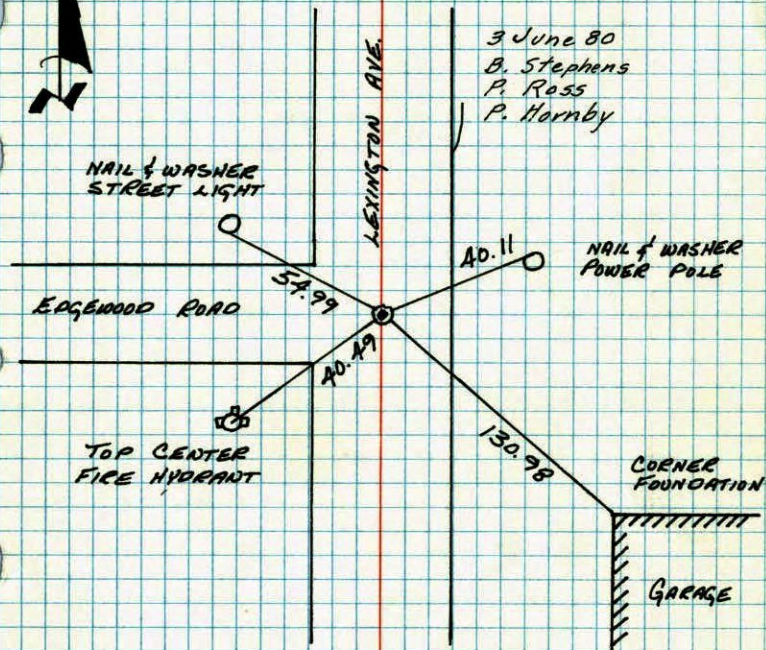
SET CAST IRON MONUMENT FLUSH. P.N.'S 2.00' NORTH
 AND EAST. CAST IRON ON TOP OF 4"x4" CONCRETE
 MONUMENT

28 SEP 71
 H. LARSON
 F. WAKS
 M. JERSON



NO. 44B

TELEPHONE



TEMPERATURE CORRECTED
 AND HORIZONTALLY
 TAPED MEASUREMENTS

ROLAND W. ANDERSON
 COUNTY SURVEYOR
 ANOKA COUNTY, MINNESOTA

W 1/4 Cor. Sec. 25

T-31 R-23

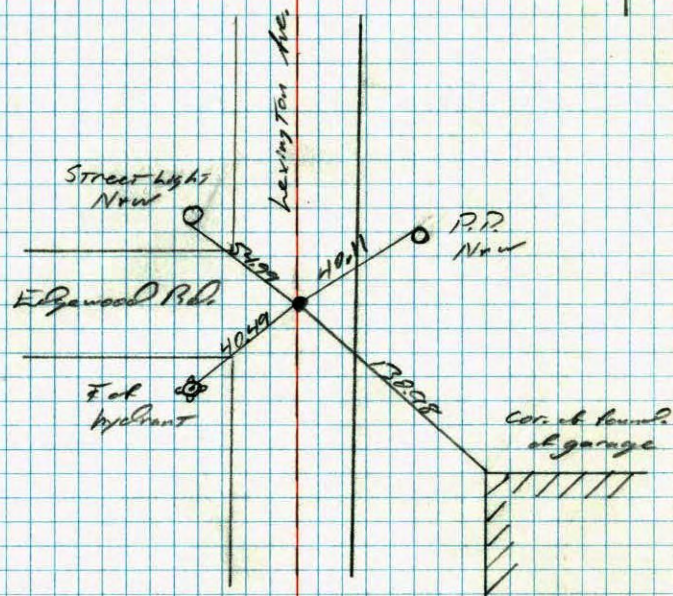
Cast iron monument flush.

6-3-80 #5
 D. Stephens
 P. Ross
 P. Hornby



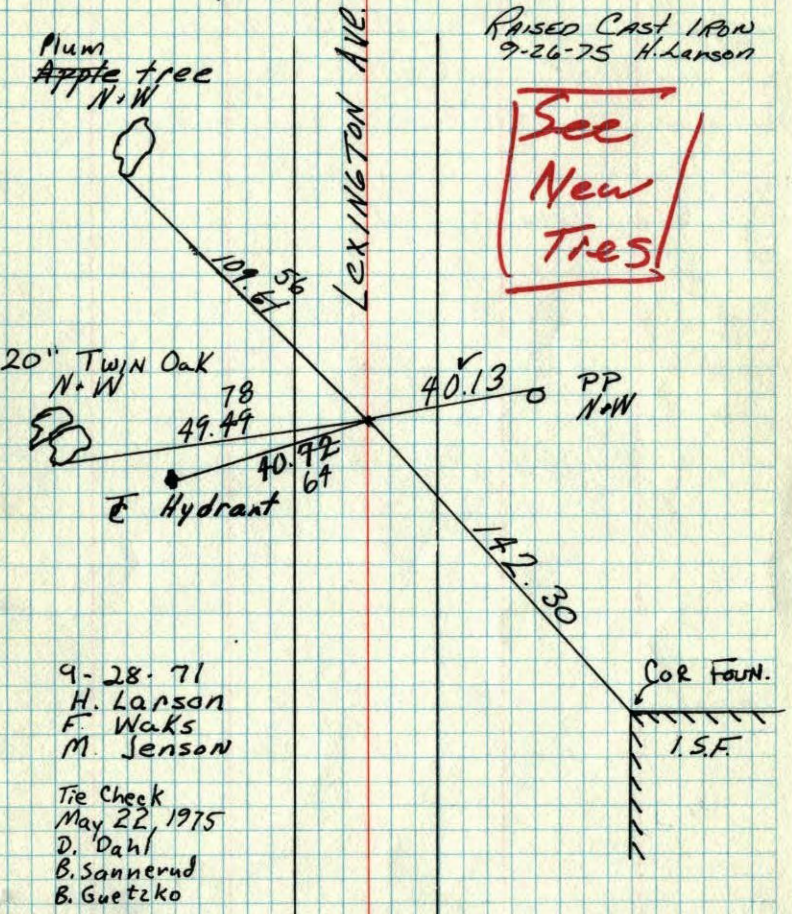
NO. 44B

TELEPHONE



W 1/4 Cor. Sec. 25 T31 R23

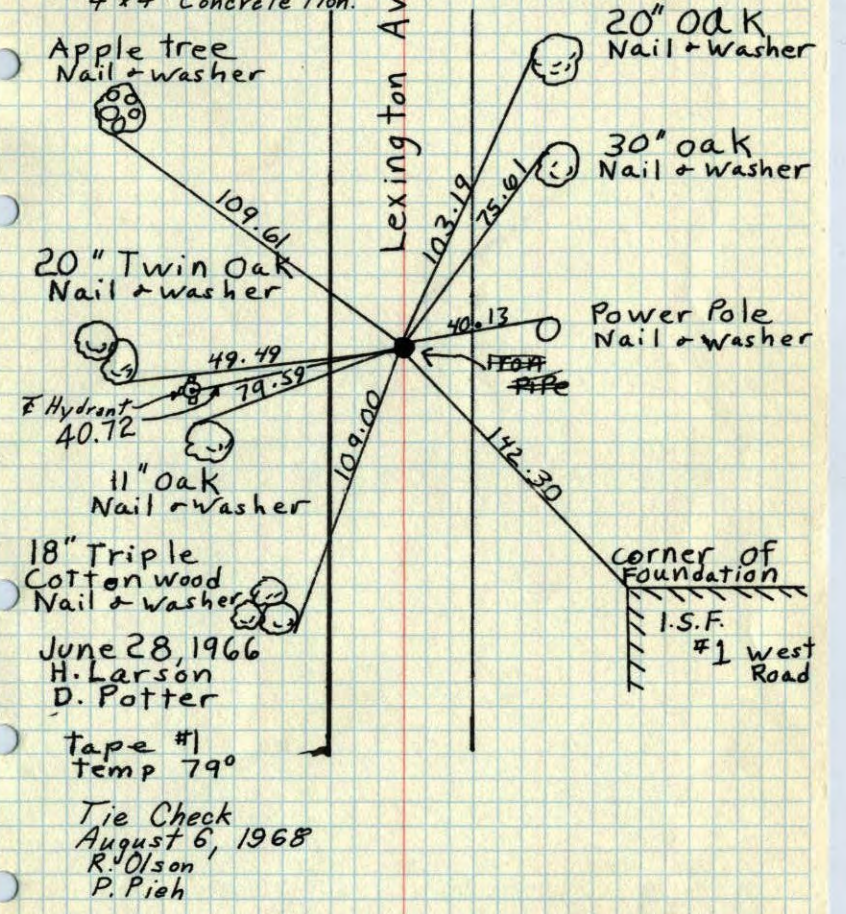
Retied for Construction
Set C.I. Mon. flush. PK 2.00 N+E
C.I. on top of 4x4 Conc. Mon.



TEMPERATURE CORRECTED ROLAND W. ANDERSON
AND HORIZONTALLY TAPED MEASUREMENTS
COUNTY SURVEYOR
ANOKA COUNTY, MINNESOTA

W 1/4 Cor. Sec. 25 T31 R23

Retied for construction.
1" iron pipe down 0.3'
Set Cast Iron Monument flush. PK's
2.00 North + East. Cast Iron on top of
4"x4" Concrete Mon.

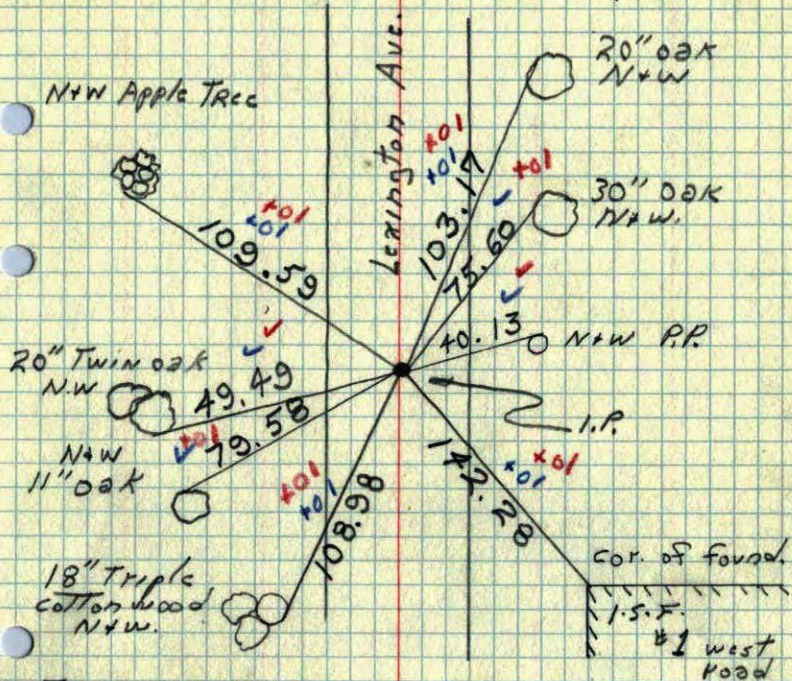


TEMPERATURE CORRECTED ROLAND W. ANDERSON
AND HORIZONTALLY TAPED MEASUREMENTS
COUNTY SURVEYOR
ANOKA COUNTY, MINNESOTA

W 1/4 Cor. Sec. 25 T31 R23

Retied for construction.

1" iron pipe down 0.3'



June 28 1966

#1 79°

H. Larson
D. Potter

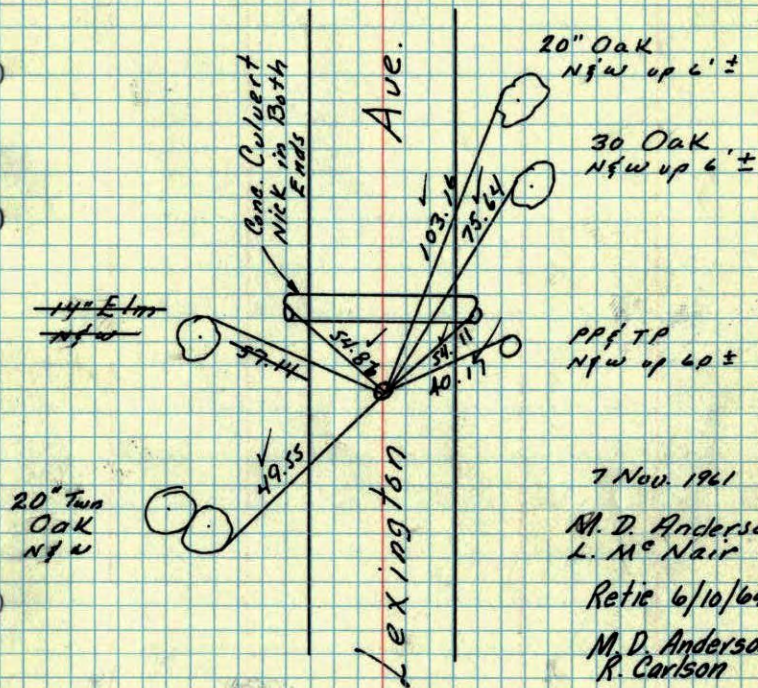
TEMPERATURE CORRECTED
AND HORIZONTALLY
TAPED MEASUREMENTS

ROLAND W. ANDERSON
COUNTY SURVEYOR
ANOKA COUNTY, MINNESOTA

85

W 1/4 Cor. Sec 25-31-23

found 1" Iron in Black top to fit old ties
down 0.3'



7 Nov. 1961

M. D. Anderson
L. M. Nair

Retie 6/10/64

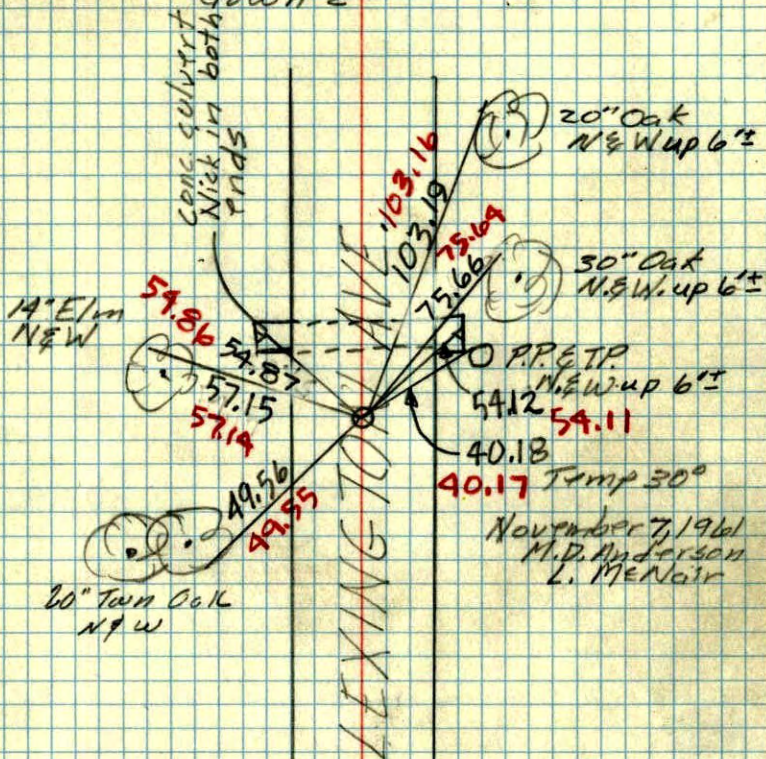
M. D. Anderson
R. Carlson

TEMPERATURE CORRECTED
AND HORIZONTALLY
TAPED MEASUREMENTS

ROLAND W. ANDERSON
COUNTY SURVEYOR
ANOKA COUNTY, MINNESOTA

W 1/4 Cor Sec. 25-31-23

found 1" iron pipe in black-top to fit old tips down 2"



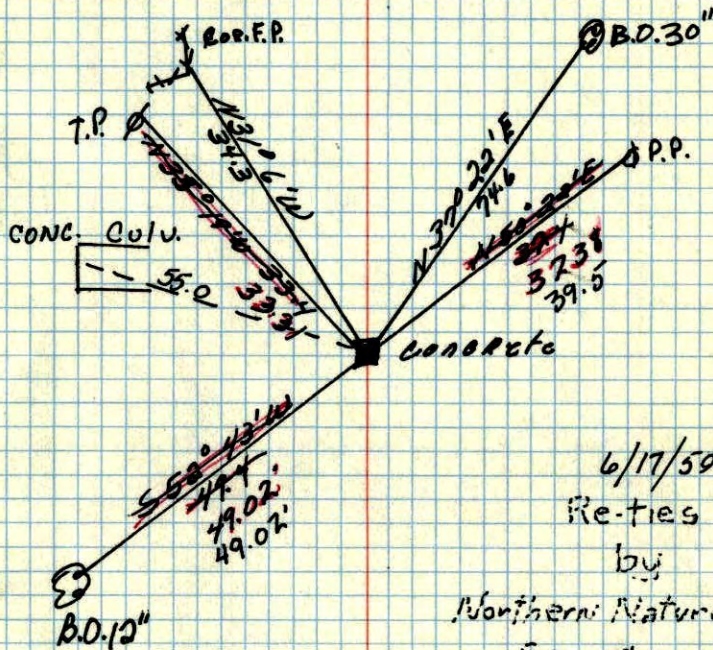
November 7, 1961
M.D. Anderson
L. McNaair

TEMP. CORR.
+30°

W 1/4 cor. of Sec. 25 T. 31 R. 23

Cone Mon. down 2"

Retied
Charles O. George
Nov. 7, 1955

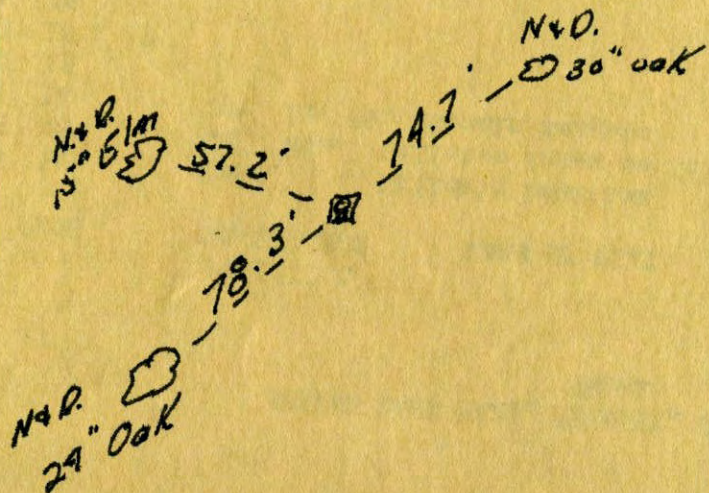


6/17/59
Ret-ies
by
Northern Natural
Gas Co.

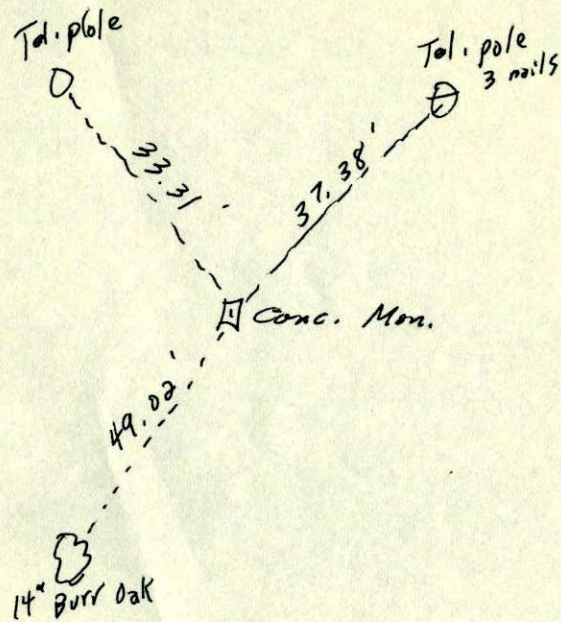
Retied

Sept 6, 1943
Cartwright

W 1/4 cor. sec. 25 T 1 R 23
Iron flush located Dec. 1956



~~E 1/4~~ Corn. of Sec. 26, 31-27
W 25



+

✓