

CERTIFICATE OF LOCATION OF GOVERNMENT CORNER

County of Anoka

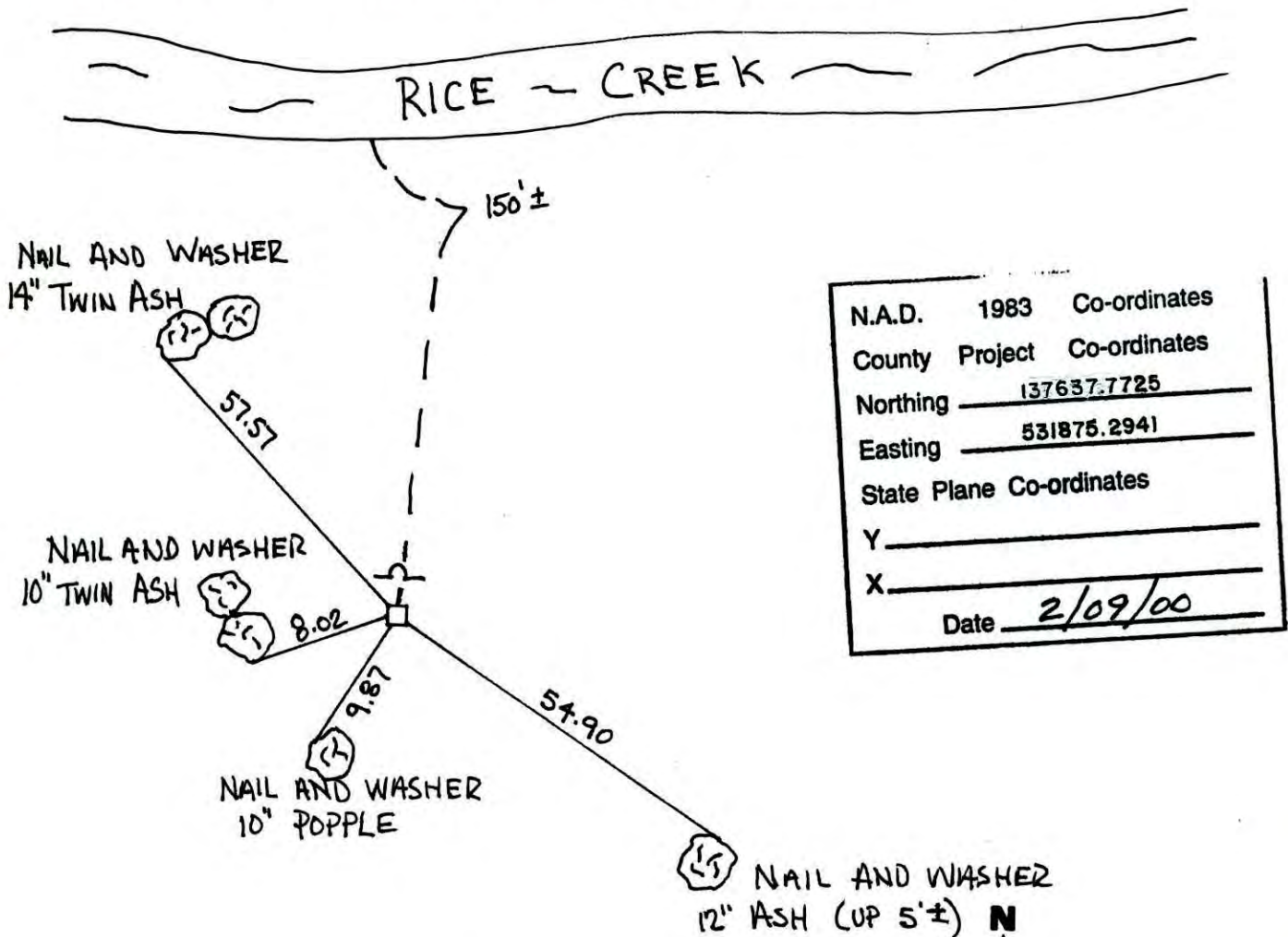
State of Minnesota

NORTHEAST Corner of Sec. 36 Township 31 Range 23

I hereby certify that on the 7TH day of MAY, 19 63, I found the described corner which was evidenced by 4" SQ. CONCRETE MONUMENT

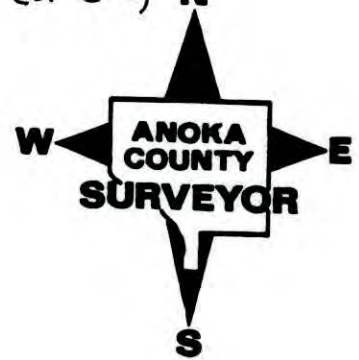
and I further certify that to perpetuate the location of said corner, I did, at the exact location thereof, place a permanent marker consisting of 4" SQ. CONCRETE MONUMENT, SIGN AND POST ON NORTH SIDE

which reference or witness monuments are located in the manner following:



N.A.D.	1983	Co-ordinates
County	Project	Co-ordinates
Northing		<u>137637.7725</u>
Easting		<u>531875.2941</u>
State Plane Co-ordinates		
Y		_____
X		_____
Date		<u>2/09/00</u>

Revised date	Revised date	Revised date
<u>WET 86</u>		
<u>8-3-95</u>		
<u>2-9-00</u>		



CERTIFICATE OF LOCATION OF GOVERNMENT CORNER

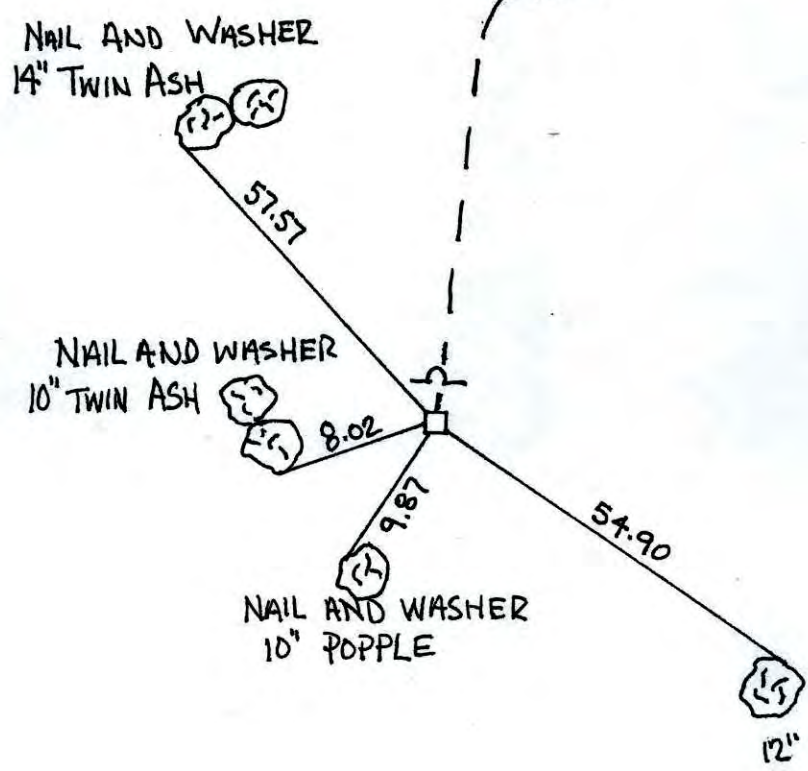
County of Anoka State of Minnesota

NORTHEAST Corner of Sec. 36 Township 31 Range 23

I hereby certify that on the 7TH day of MAY, 19 63, I found the described corner which was evidenced by 4" SQ. CONCRETE MONUMENT

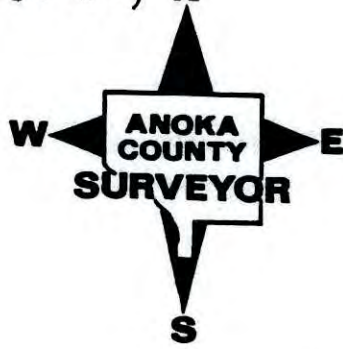
and I further certify that to perpetuate the location of said corner, I did, at the exact location thereof, place a permanent marker consisting of 4" SQ. CONCRETE MONUMENT, SIGN AND POST ON NORTH SIDE

which reference or witness monuments are located in the manner following:



N.A.D.	1983	Co-ordinates
County	Project	Co-ordinates
Northing		<u>137637.7725</u>
Easting		<u>531875.2941</u>
State Plane Co-ordinates		
Y		_____
X		_____
Date _____		

Revised date	Revised date	Revised date
<u>WET 86</u>		
<u>8-3-95</u>		
<u>2-9-00</u>		



NORTHEAST COR. SEC. 36, T. 31, R. 23

RETIED MON. DURING GPS.

RICE CREEK

N.W. 14" TWIN ASH

150' ±



57.57

N.W. 10" TWIN ASH



8.02



N.W. 10" POPLAR

9.87

54.90



N.W. 12" ASH (UP 5' ±)



2-9-00

J. SIMMER

T. SCHWAB

NO. 446

NATIONAL FOREST

N.E. COR. SEC. 36-T31-R23

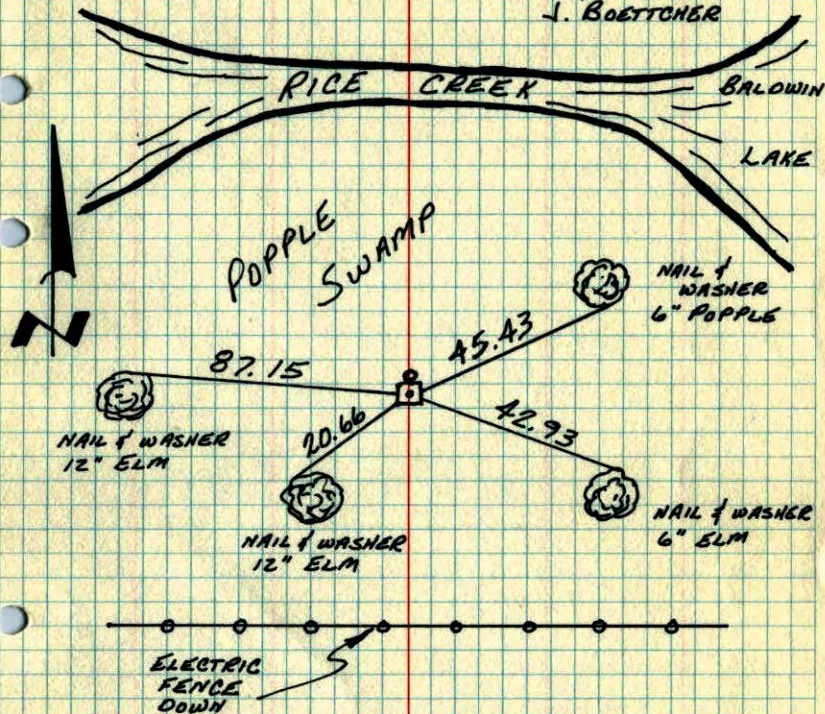
FOUND CONCRETE MONUMENT AND IRON PIPE
IN PLACE. ORIGINAL TIES GROWN OVER. RETIED.

6 JAN 78

H. LARSON

B. GUSTAKO

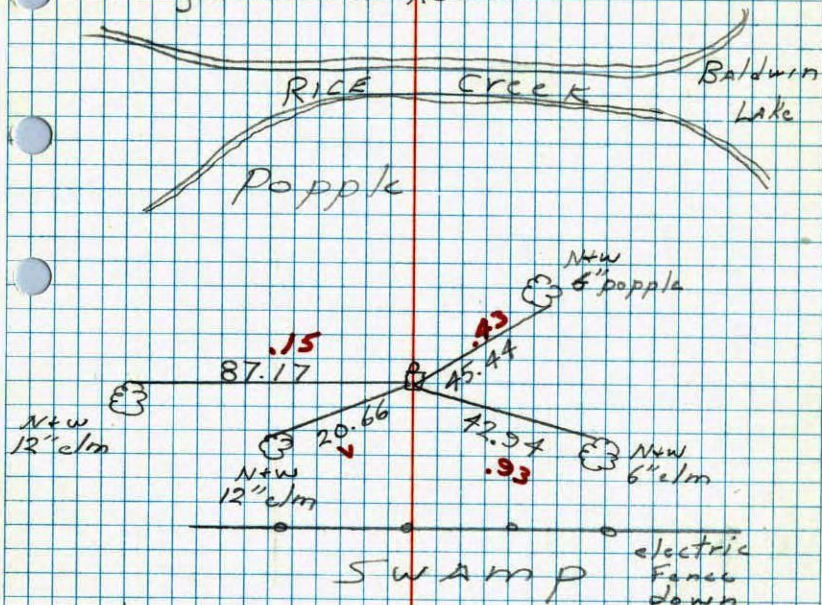
J. BOETTCHER

TEMPERATURE CORRECTED
AND HORIZONTALLY
TAPED MEASUREMENTSROLAND W. ANDERSON
COUNTY SURVEYOR
ANOKA COUNTY, MINNESOTA

NE Cor. Sec. 36 T31 R23

Found concrete and I.P. in place

Tie grown over Retied



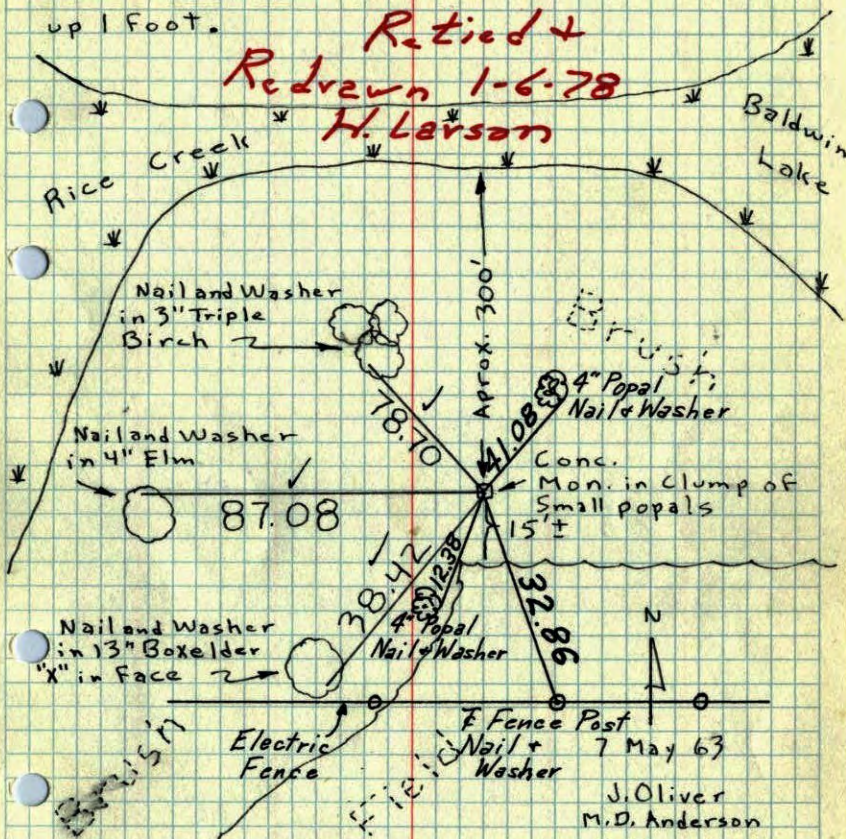
1-6-78
#7 25°
H. Larson
B. Guetko
J. Boettcher

NE Cor. Sec. 36, T31, R23

Found 4" Sq. Concrete Monument down 0.3'

Set 2.5' long Red Iron Pipe on No. Side - Sticks up 1 foot.

**Retied +
Redrawn 1-6-78
H. Larson**



TEMPERATURE CORRECTED
AND HORIZONTALLY
TAPED MEASUREMENTS

Tie Check
Aug 14, 1968
D. Powell
R. Olson
P. Pich

ROLAND W. ANDERSON
COUNTY SURVEYOR
ANOKA COUNTY, MINNESOTA

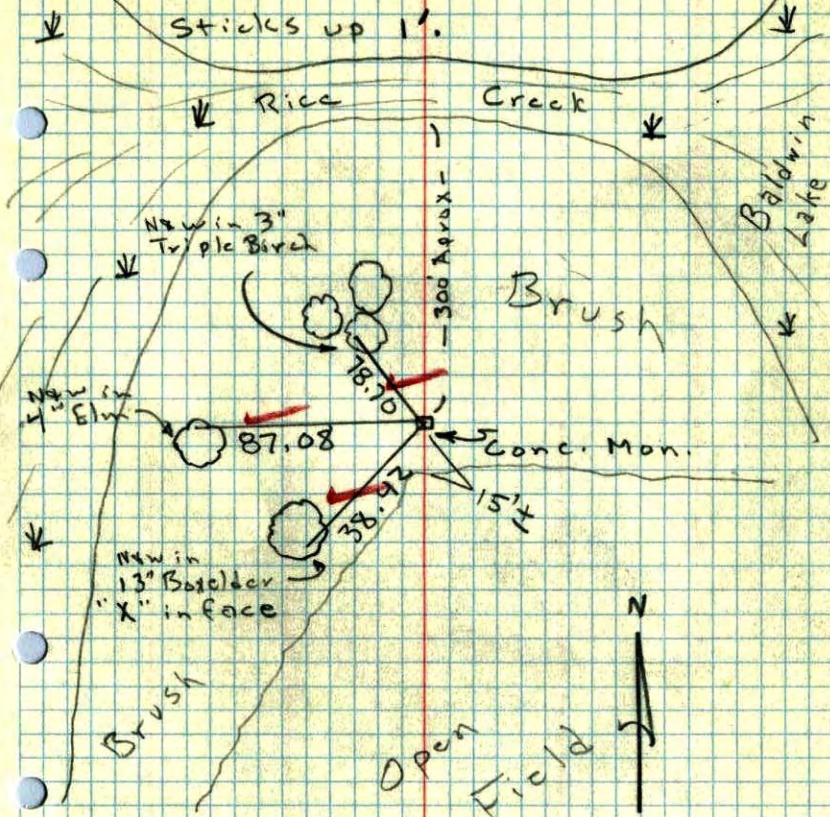
J. Oliver
M. D. Anderson
Retie 9/14/64
M. D. Anderson
J. Dunlop

NE Cor. Sec. 36, T 31, R 23

Found 4" Sq. Conc. Mon. down 6.3'

Set 2.5' Long Red I.P. on No. Side

Sticks up 1'.



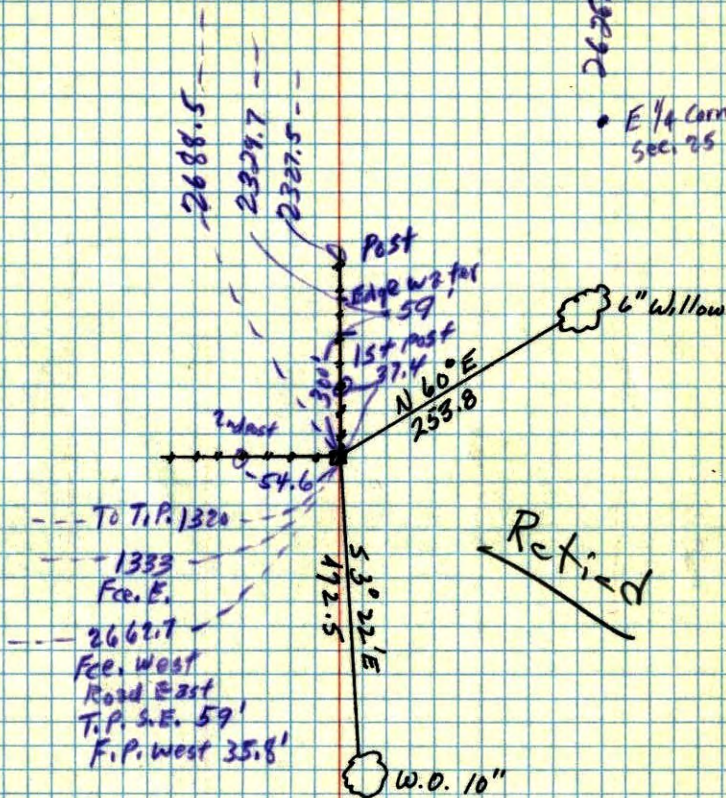
~~7 May 63~~
90°
J. Oliver
M. D. Anderson

NE 36 23 45
S.W. SEC 30, T 31, R 23

CONC. Mon.
DOWN .3

N.E. Corn.
Sec. 25

E 1/4 Corn.
Sec. 25



From Cartwright's office

5/3/63

Dec 28, 1944
CARTWRIGHT