

N 1/16th Cor. NW 1/4 Sec. 36, T31, R23

Conc. Mon. Set by Elerbee.

Set P.K.

Take ties because of road Const.

Set 1/2" Iron pipe flush

7/25/68
N. Livgard
R. Olson

Corner
Gone

10 May 63
J. Oliver
M. D. Anderson

Nail & Washer
in 27" Oak

Nail & Washer in
Powerpole

Nail & Washer
& pipe line
waving post

Woodland Rd.

Conc. Mon.

~~Nail & Washer in
3rd Fence Post
West of Corner
Fence Post~~

Nail & Washer in
Telephone
Pole

Nail & Washer
& pipe line
waving post

Nail & Washer
in 14" Oak

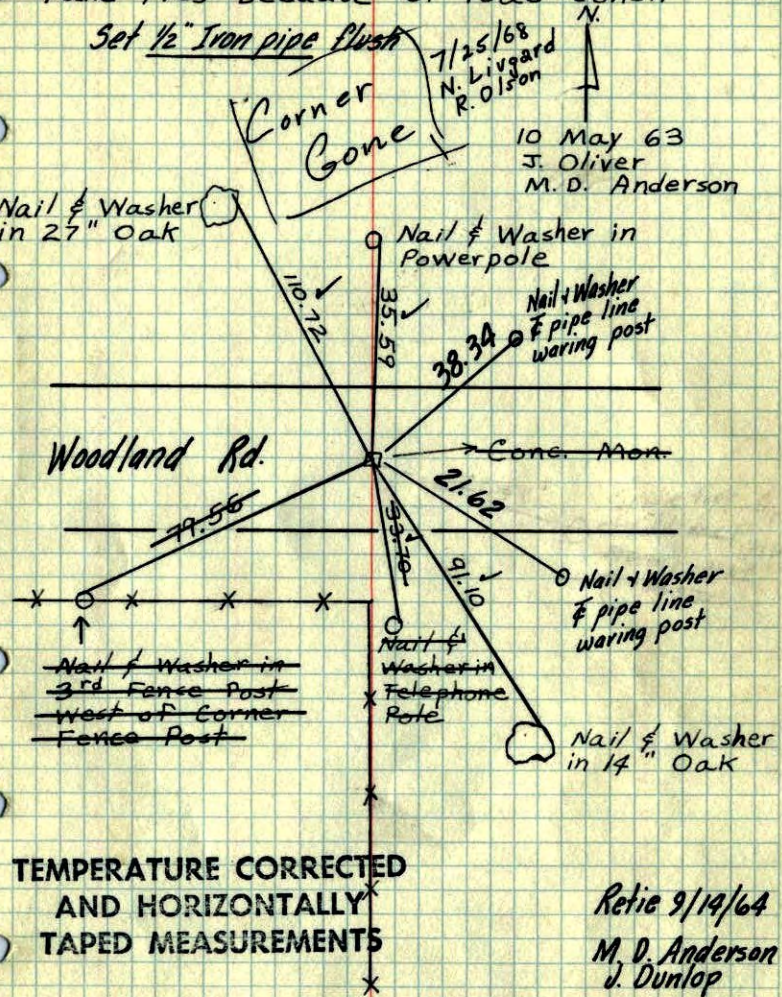
TEMPERATURE CORRECTED
AND HORIZONTALLY
TAPED MEASUREMENTS

Retie 9/19/64

M. D. Anderson
J. Dunlop

10-5-71
H. Larson
F. Waks
M. Serson

ROLAND W. ANDERSON
COUNTY SURVEYOR
ANOKA COUNTY, MINNESOTA



N 1/16th Cor. NW 1/4 Sec. 36, T31, R23

Conc. Mon. Set by Elerbee.

Take ties because of road const.

New in 27"
Oak

New in P.P.

10 May 63
450 #3
J. D. Oliver
M. D. Anderson

Conc. Mon.

New in 3rd
F.P. west of
Cor. F.P.

New in
T.P.

New in 14" Oak

