

CERTIFICATE OF LOCATION OF GOVERNMENT CORNER

County of Anoka State of Minnesota

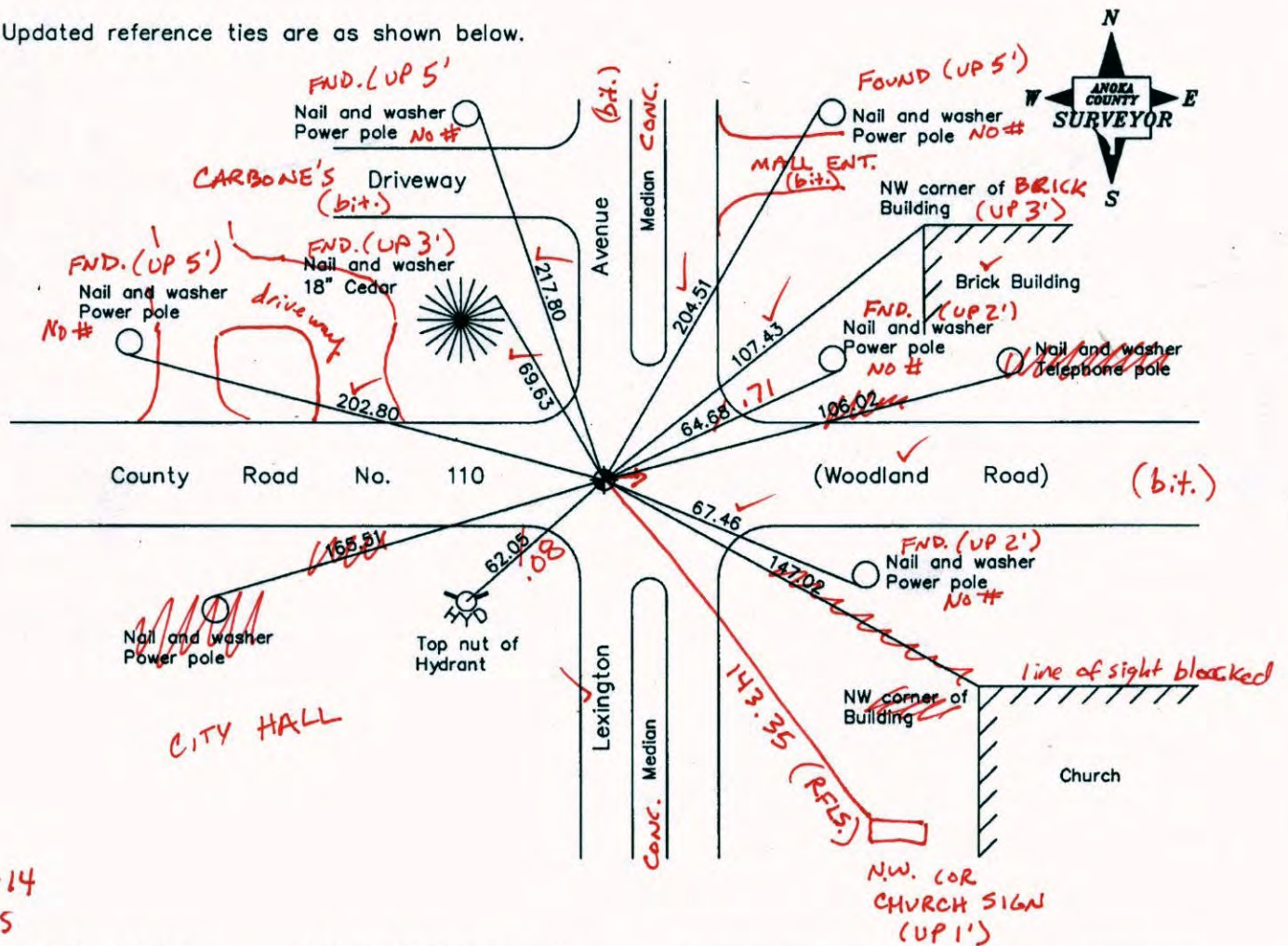
Southwest Corner of Sec. 25 Township 31 Range 23

On the 6th day of September, 1943, the described corner was evidenced by a concrete monument

and to perpetuate the location of said corner, at the exact location thereof, a permanent marker was placed consisting of a cast iron monument

AND on the 12th day of June, 2006, said permanent marker was found and the ties were updated

Updated reference ties are as shown below.



6-26-14
BK-55
T/Y

Revised date
10/19/98
6/05/02
6/12/06

N.A.D. 1983 Coordinates (1996 Adjustment)	
County Project Coordinates	
Northing	137772.9118
Easting	526577.9125
Date	10/19/98

I hereby certify that this United States public land survey monument record is correct and complete to the best of my knowledge and belief.

Larry D. Hoium Date 6/12/06

Larry D. Hoium, Anoka County Surveyor

Minnesota License Number 18165

CERTIFICATE OF LOCATION OF GOVERNMENT CORNER

County of Anoka

State of Minnesota

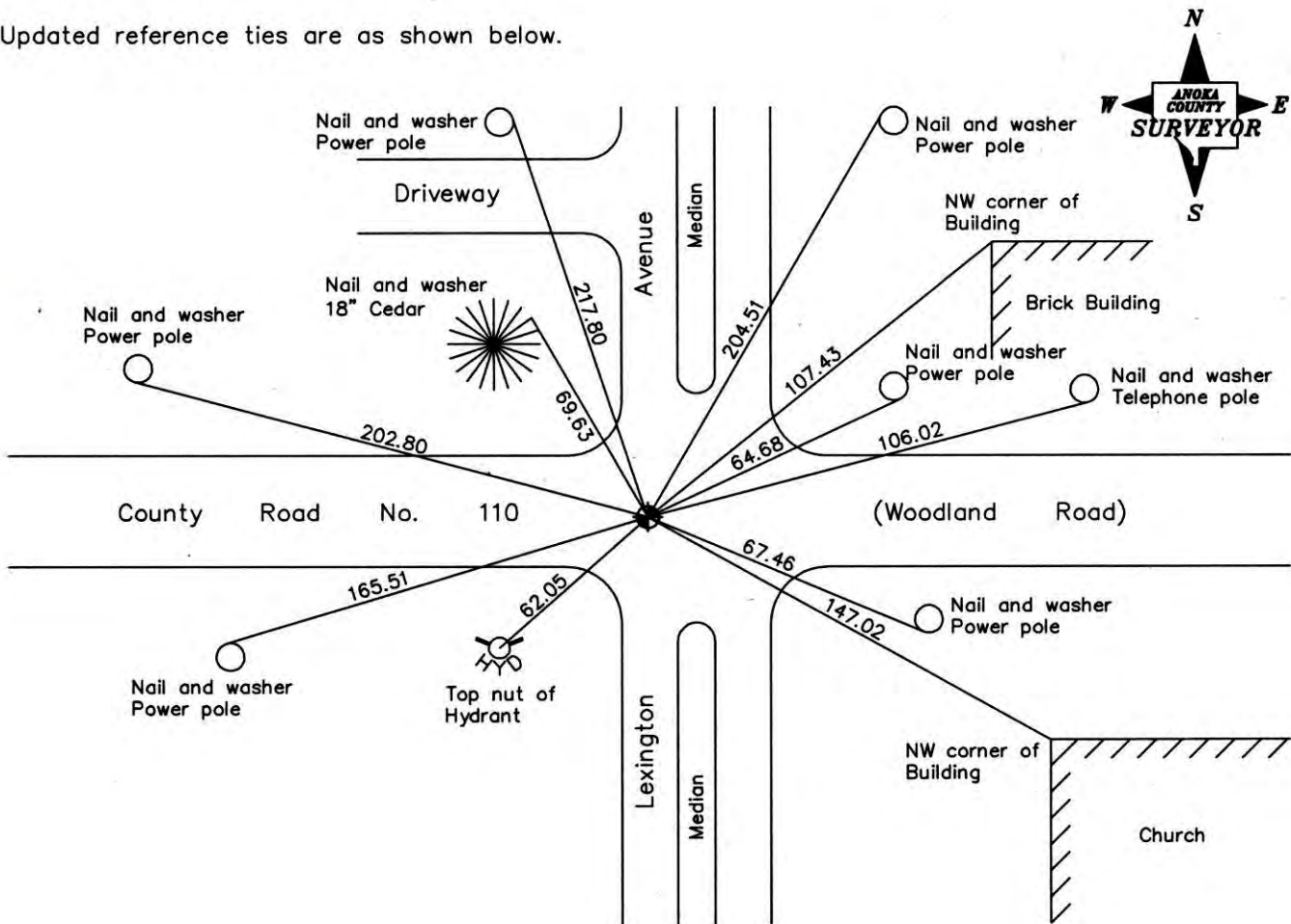
Southwest Corner of Sec. 25 Township 31 Range 23

On the 6th day of September, 1943, the described corner was evidenced by a concrete monument

and to perpetuate the location of said corner, at the exact location thereof, a permanent marker was placed consisting of a cast iron monument

AND on the 12th day of June, 2006, said permanent marker was found and the ties were updated

Updated reference ties are as shown below.



Revised date
10/19/98
6/05/02
6/12/06

N.A.D. 1983 Coordinates (1996 Adjustment)	
County Project Coordinates	
Northing	<u>137772.9118</u>
Easting	<u>526577.9125</u>
Date	<u>10/19/98</u>

I hereby certify that this United States public land survey monument record is correct and complete to the best of my knowledge and belief.

Larry D. Hoium Date 6/12/06

Larry D. Hoium, Anoka County Surveyor

Minnesota License Number 18165

CERTIFICATE OF LOCATION OF GOVERNMENT CORNER

County of Anoka

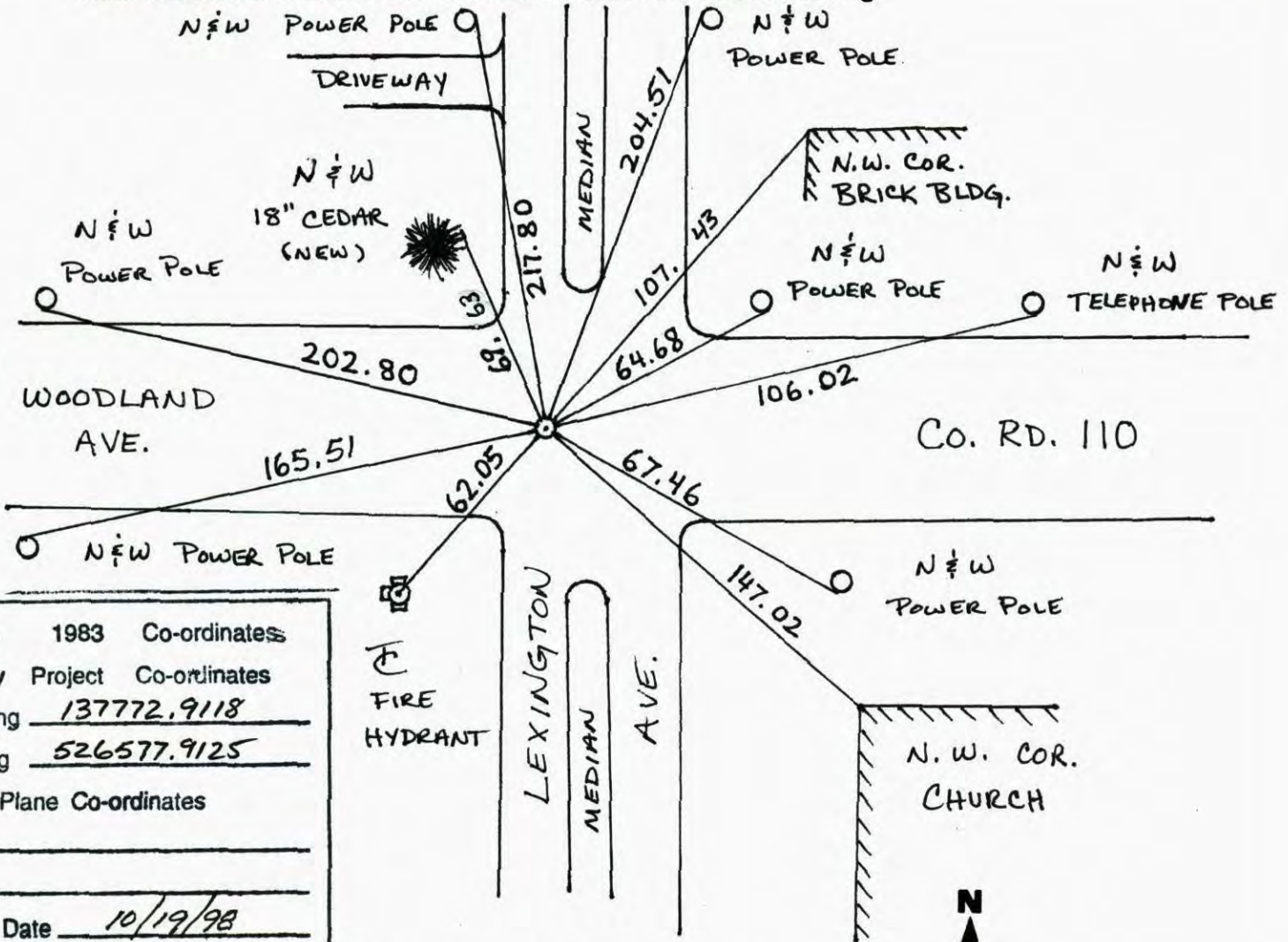
State of Minnesota

SOUTHWEST Corner of Sec. 25 Township 31 Range 23

I hereby certify that on the 6 day of SEPT., 1943, I found the described corner which was evidenced by CONCRETE MONUMENT

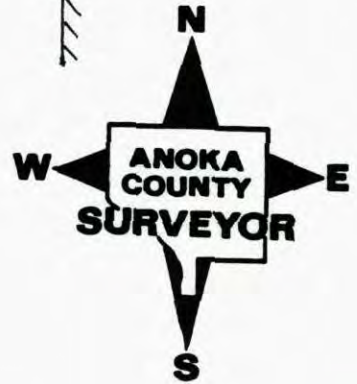
and I further certify that to perpetuate the location of said corner, I did, at the exact location thereof, place a permanent marker consisting of CAST IRON MONUMENT

which reference or witness monuments are located in the manner following:



N.A.D.	1983	Co-ordinates
County	Project	Co-ordinates
Northing	<u>137772.9118</u>	
Easting	<u>526577.9125</u>	
State Plane Co-ordinates		
Y	_____	
X	_____	
Date	<u>10/19/98</u>	

Revised date	Revised date	Revised date
<u>6-2-86</u>		
<u>7-19-90</u>		
<u>6-26-95</u>		
<u>10-19-98</u>		
<u>6-5-02</u>		
<u>6-12-06</u>		



CERTIFICATE OF LOCATION OF GOVERNMENT CORNER

County of Anoka

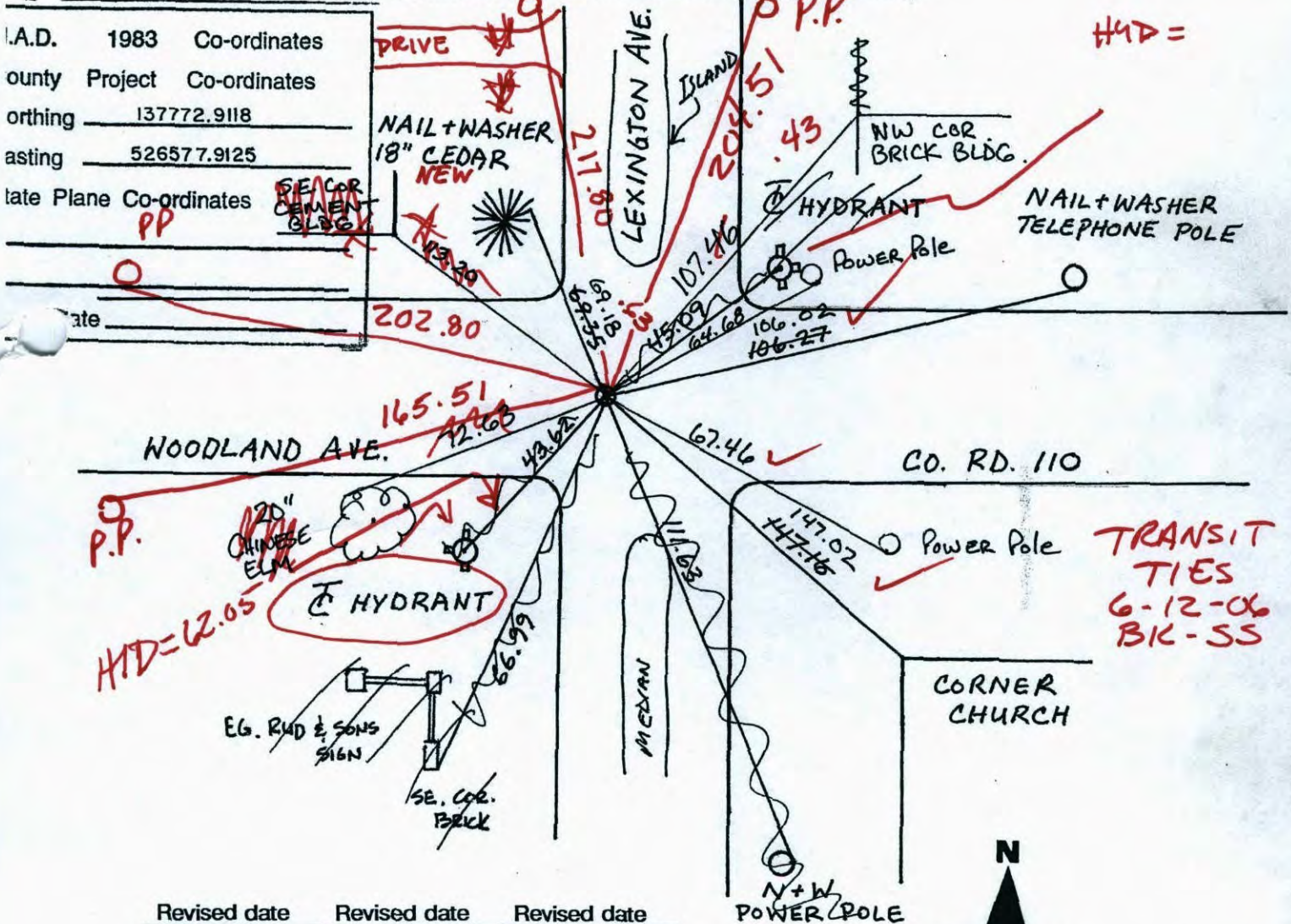
State of Minnesota

SOUTHWEST Corner of Sec. 25 Township 31 Range 23

I hereby certify that on the 6 day of SEPTEMBER, 1943, I found the described corner which was evidenced by CONCRETE MONUMENT

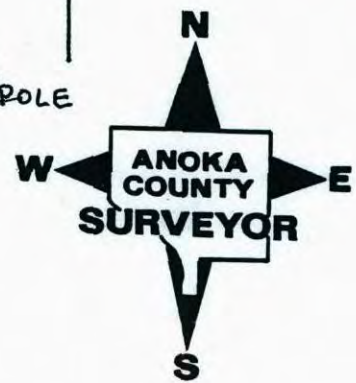
and I further certify that to perpetuate the location of said corner, I did, at the exact location thereof, place a permanent marker consisting of CAST IRON MONUMENT

which reference or witness monuments are located in the manner following:



Y.A.D.	1983	Co-ordinates
County Project		Co-ordinates
Orthing	137772.9118	
asting	526577.9125	
ate Plane Co-ordinates		

Revised date	Revised date	Revised date
6-2-86		
7-19-90		
6-26-95		
10-19-98		
6-5-02		



CERTIFICATE OF LOCATION OF GOVERNMENT CORNER

County of Anoka

State of Minnesota

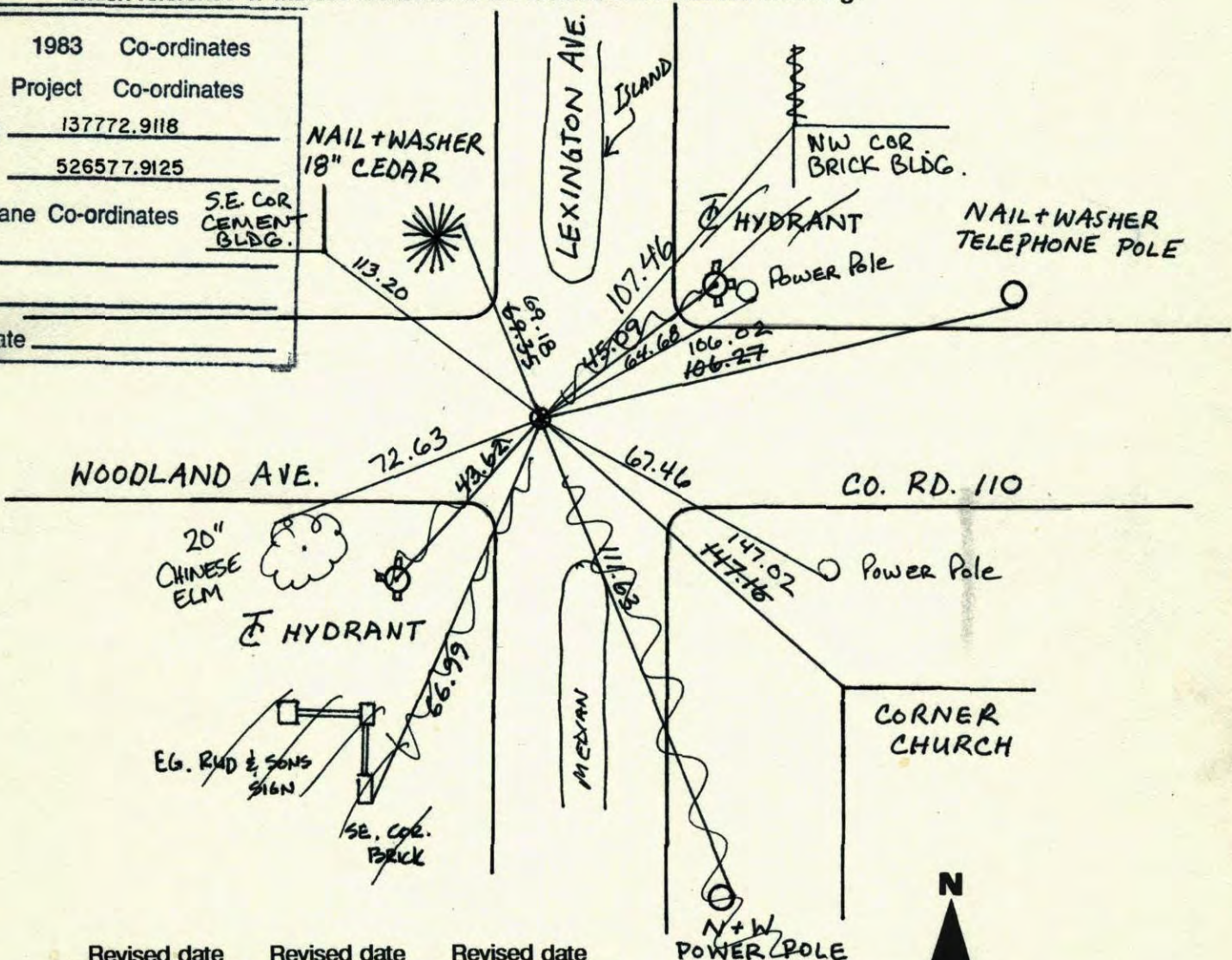
SOUTHWEST Corner of Sec. 25 Township 31 Range 23

I hereby certify that on the 6 day of SEPTEMBER, 1943, I found the described corner which was evidenced by CONCRETE MONUMENT

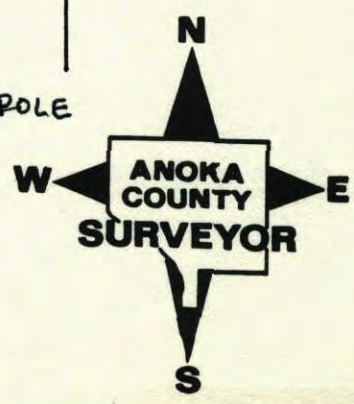
and I further certify that to perpetuate the location of said corner, I did, at the exact location thereof, place a permanent marker consisting of CAST IRON MONUMENT

which reference or witness monuments are located in the manner following:

N.A.D.	1983	Co-ordinates
County Project		Co-ordinates
Northing	<u>137772.9118</u>	
Easting	<u>526577.9125</u>	
State Plane Co-ordinates	S.E. COR CEMENT BLDG.	
Date		



Revised date	Revised date	Revised date
<u>6-2-86</u>		
<u>7-19-90</u>		
<u>6-26-95</u>		
<u>10-19-98</u>		
<u>6-5-02</u>		

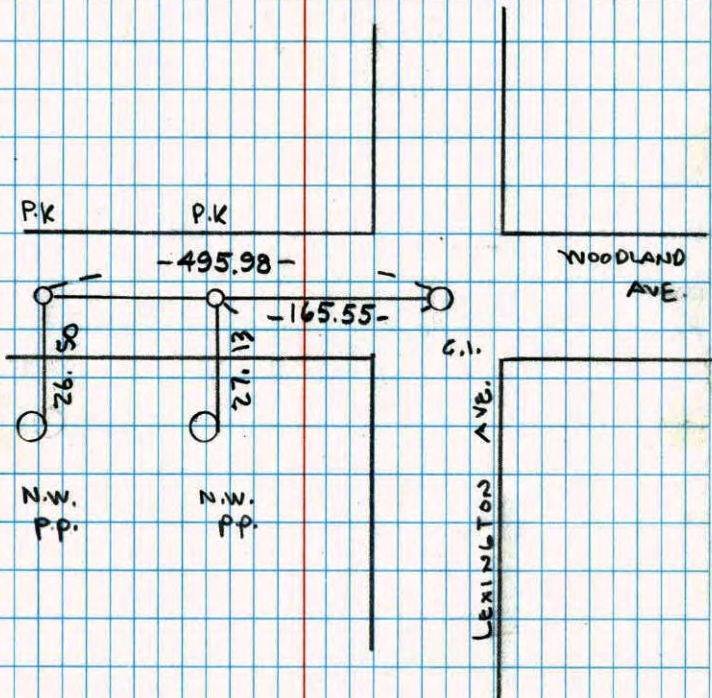


SOUTHWEST COR. SEC 25 T 31 R 23

REMOVED CAST IRON MON &

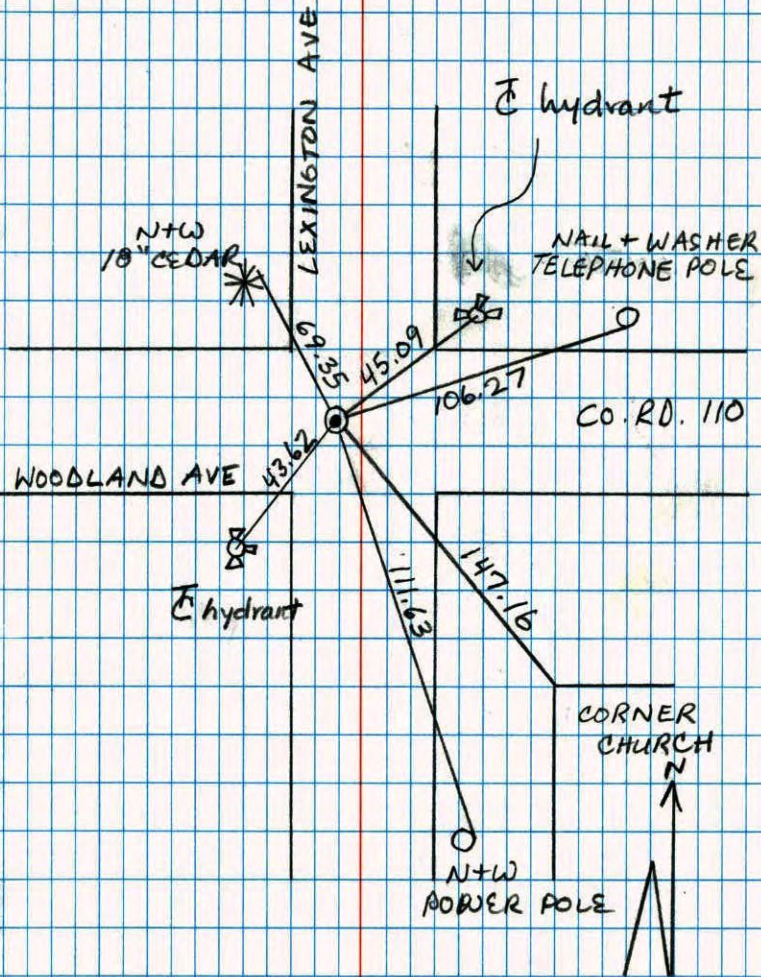
RETIED. FOR CONST.

5-29-01
J. SIMMER
B. KLEMZ A



S/W SEC 25 T. 31 R. 23

CAST IRON MONUMENT



JASON + JOSH ANDERSON
6-26-95

SW Cor. Sec. 25-T31-R23

Set Cast Iron Monument flush after construction which removed Concrete Mon.

PK's 2.00' North + East.

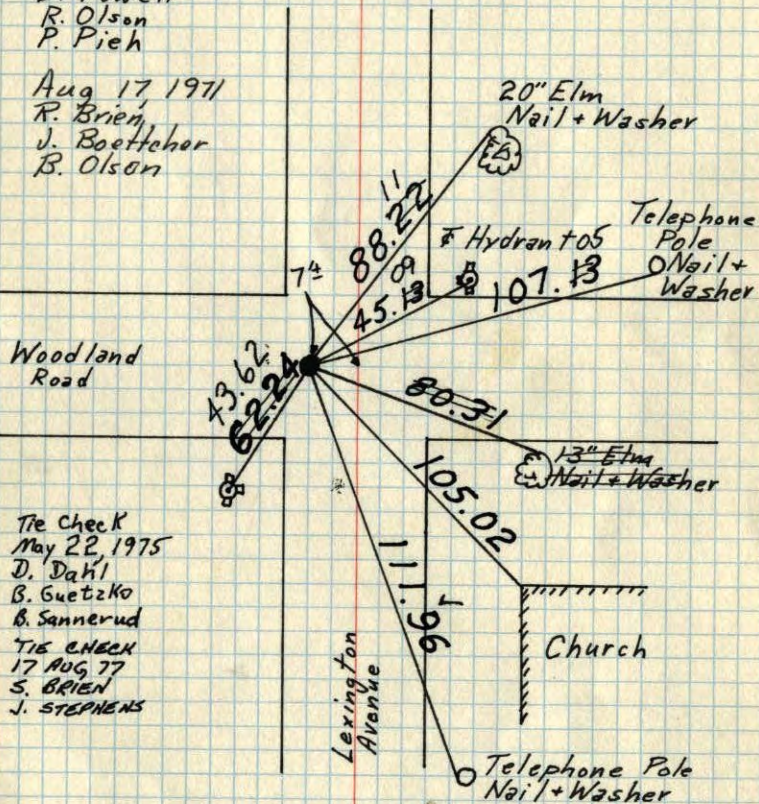
August 14, 1968

D. Powell
R. Olson
P. Pieh

Replaced Cast Iron Mon After Construction.

Aug 17 1971

R. Brien
J. Boettcher
B. Olson



Tie Check
May 22, 1975
D. Dakl
B. Guetzko
B. Sannerud
TIE CHECK
17 AUG 77
S. BRIEN
J. STEPHENS

TEMPERATURE CORRECTED
AND HORIZONTALLY
TAPED MEASUREMENTS

ROLAND W. ANDERSON
COUNTY SURVEYOR
ANOKA COUNTY, MINNESOTA

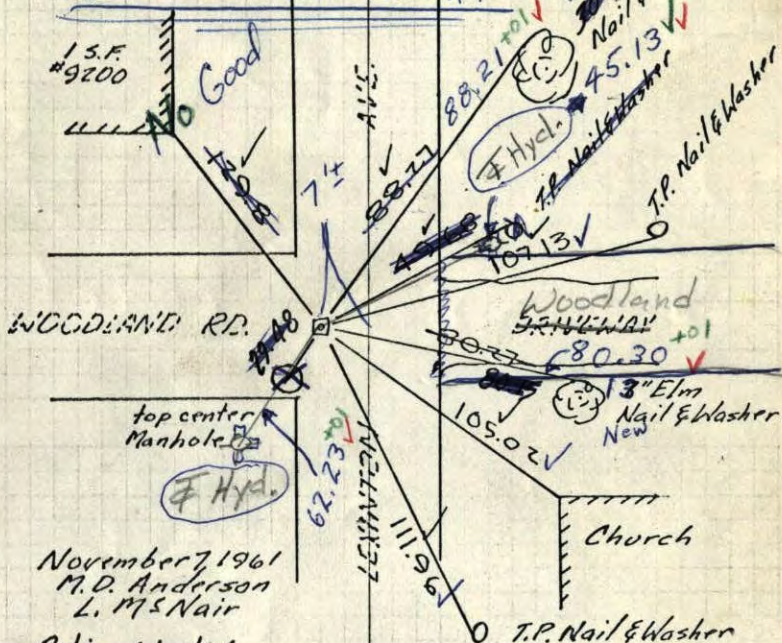
S.W. Cor. Sec. 25-31-23

found 4" Concrete Monument
down 0.8'

1/2" Iron pipe over top center

Checks with old ties

Set PK in place. PK's 2.00' N+E
Set C.I. Mon. flush.



November 7 1961
M. D. Anderson
L. M. S. Nair

Retie 6/10/64

M. D. Anderson
R. Carlson

8/14/68
#6-68
D. Powell
R. Olson
P. Pieh

No dip with
dip needle. ✓
Should replace
with C.I. Mon.

TEMPERATURE CORRECTED
AND HORIZONTALLY
TAPED MEASUREMENTS

ROLAND W. ANDERSON
COUNTY SURVEYOR
ANOKA COUNTY, MINNESOTA

Dead file

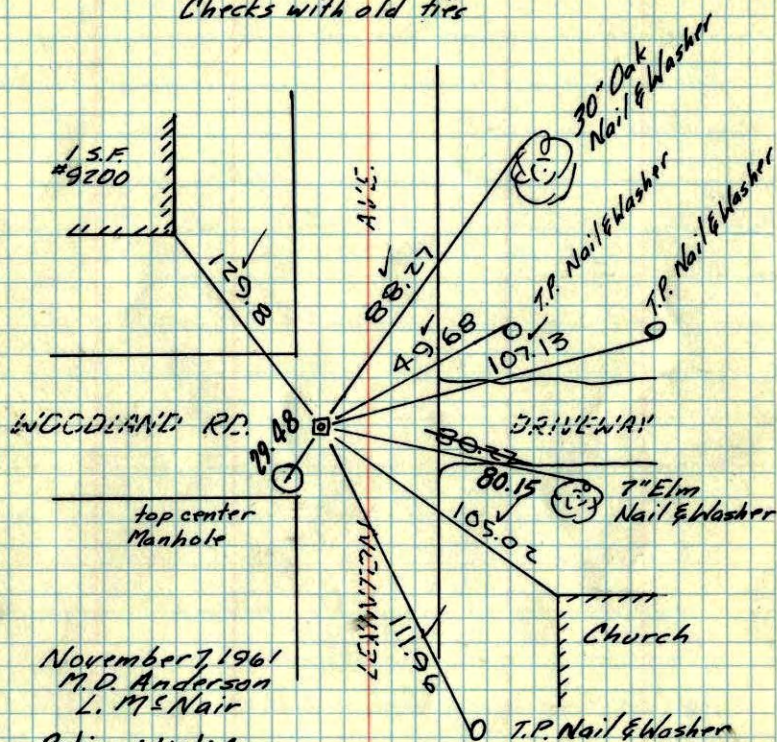
88

S.W. Cor. Sec. 25-31-23

found 4" Concrete Monument
down 0.8'

1/2" Iron pipe over top center

Checks with old ties



November 7 1961
M.D. Anderson
L. M. & Nair

Retie 6/10/64

M. D. Anderson
R. Carlson

TEMPERATURE CORRECTED
AND HORIZONTALLY
/ TAPED MEASUREMENTS

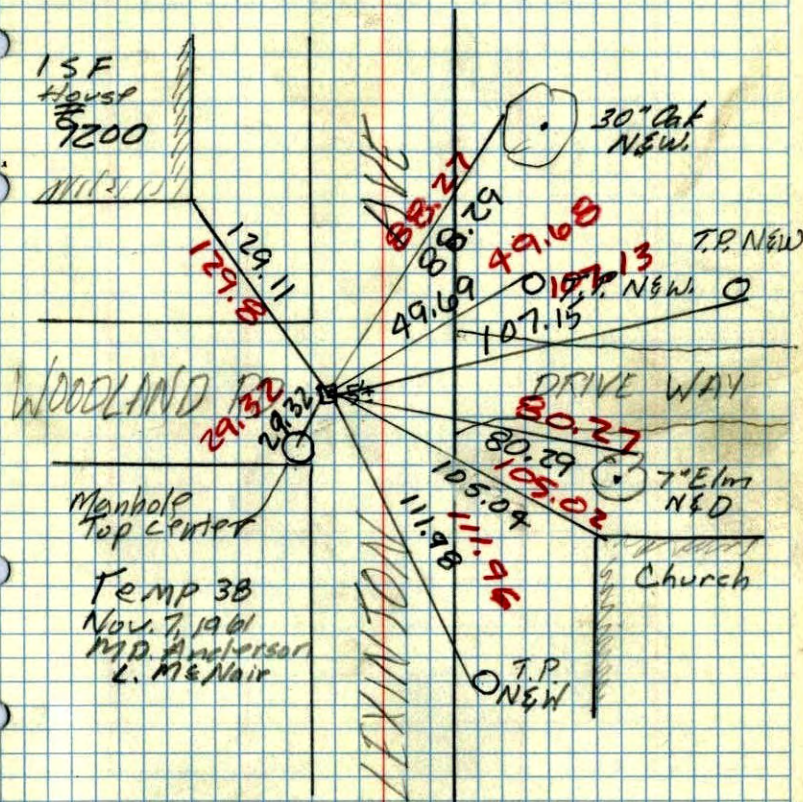
ROLAND W. ANDERSON
COUNTY SURVEYOR
ANOKA COUNTY, MINNESOTA

S.W. Cor. Sec. 25-31-23

found Conc. Mon down 0.8'

1/2" Iron pipe over top

checks with old ties



Manhole
Top Center
Temp 38
Nov. 7, 1961
M.D. Anderson
L. M. & Nair

TEMP. CORR.
+38°

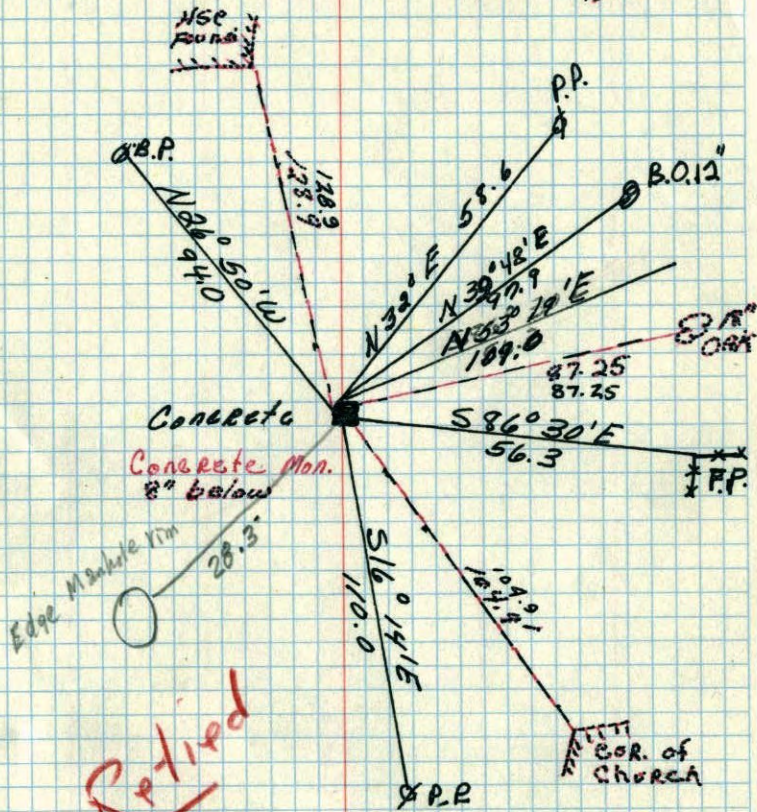
W

R23 44
SW Cor. of Sec. 25 T. 31 R24

Conc. Mon. down 8"

Retired

Charles C. George
Nov. 7, 1955

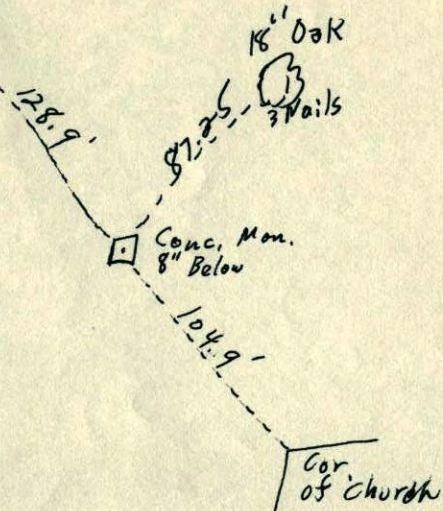


Retired

Sept. 6, 1943
Cartwright

S.E. Corn of Sec. 26 31-23
SW 25

N 82°
Found.



Retired

SW cor Sec. 25 T 31 R 23
Iron pin located here Dec. 1952

