

CERTIFICATE OF LOCATION OF GOVERNMENT CORNER

County of Anoka

State of Minnesota

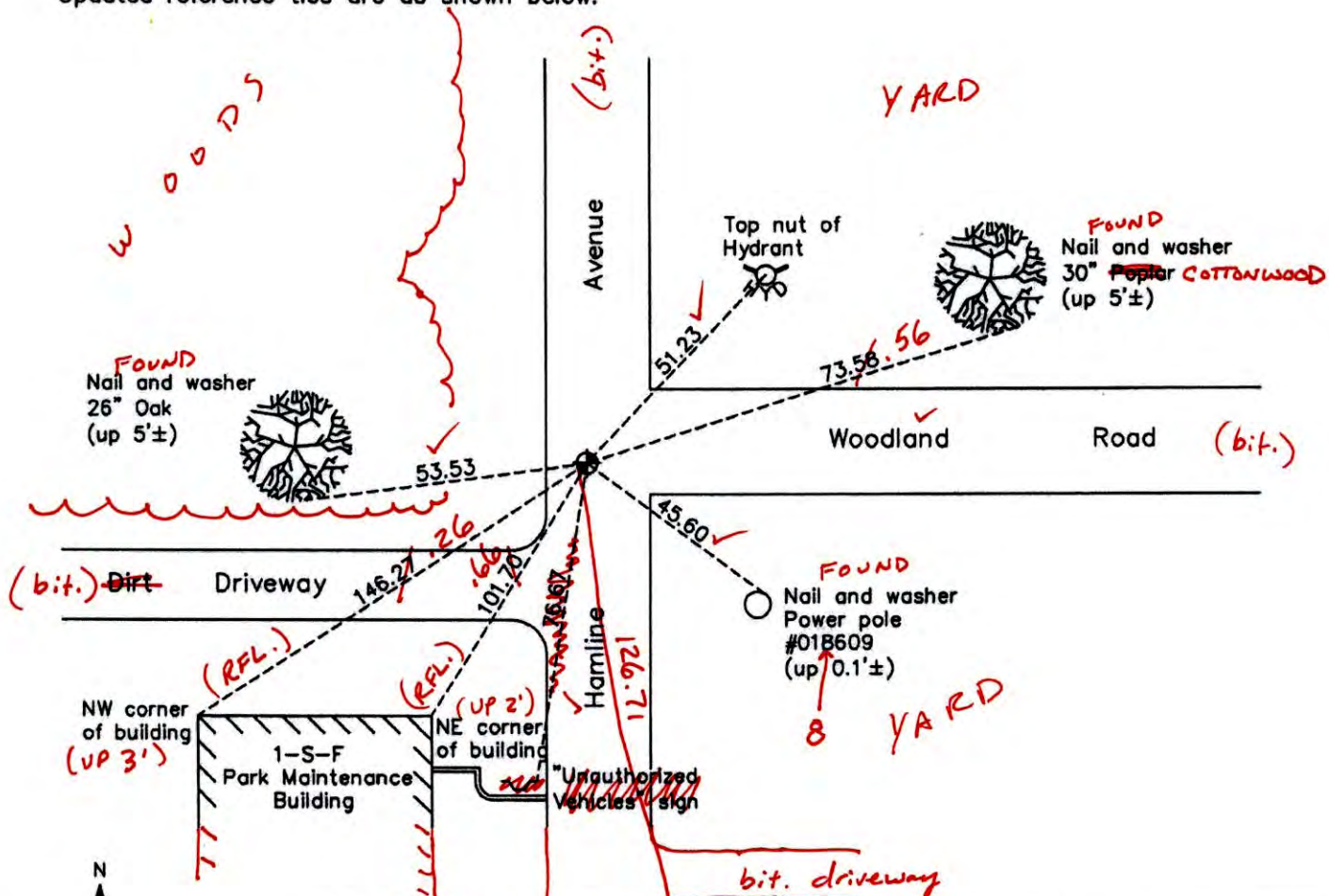
South 1/4 Corner of Sec. 26 Township 31 Range 23

On the 29th day of July, 1959, the described corner was evidenced by a concrete monument

and to perpetuate the location of said corner, at the exact location thereof, a permanent marker was placed consisting of a cast iron monument ON E of HAMLINE AVE.

AND on the 13th day of November, 2012, said permanent marker was replaced with a cast iron monument after road construction and the ties were updated.

Updated reference ties are as shown below.



Revision Date
12/09/13

N.A.D. 1983 Coordinates
(1996 Adjustment)

County Project Coordinates	
Northing	137770.6123
Easting	523924.8474
Date	10/28/98

I hereby certify that this United States public land survey monument record is correct and complete to the best of my knowledge and belief.

Larry D. Hoium Date 12/09/13
 Larry D. Hoium, Anoka County Surveyor
 Minnesota License Number 18165

6-25-14
BK-55 T/T

CERTIFICATE OF LOCATION OF GOVERNMENT CORNER

County of Anoka

State of Minnesota

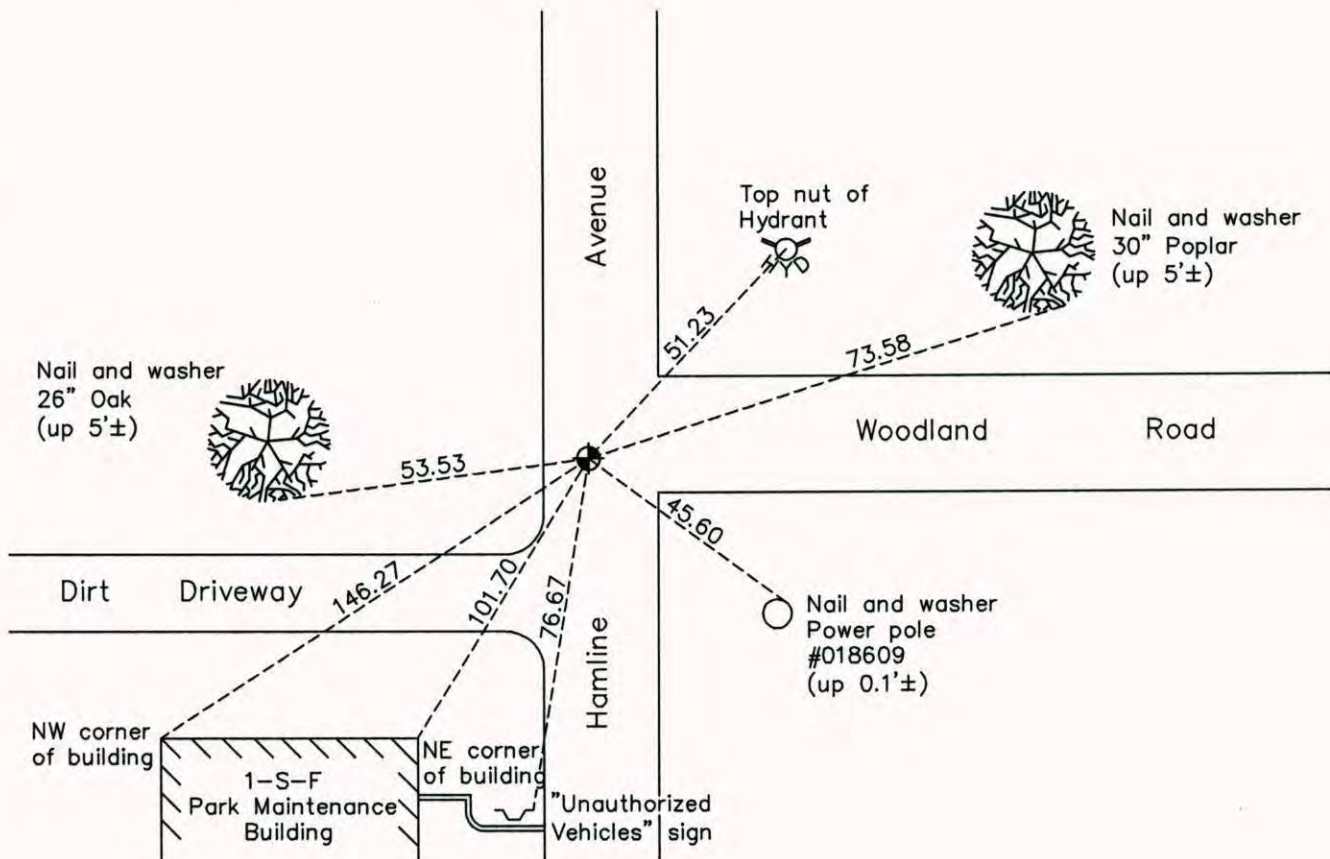
South 1/4 Corner of Sec. 26 Township 31 Range 23

On the 29th day of July, 1959, the described corner was evidenced by a concrete monument

and to perpetuate the location of said corner, at the exact location thereof, a permanent marker was placed consisting of a cast iron monument

AND on the 13th day of November, 2012, said permanent marker was replaced with a cast iron monument after road construction and the ties were updated.

Updated reference ties are as shown below.



N

W ANOKA COUNTY SURVEYOR E

S

Revision Date 12/09/13

N.A.D. 1983 Coordinates
(1996 Adjustment)

County Project Coordinates	
Northing	137770.6123
Easting	523924.8474
Date	10/28/98

I hereby certify that this United States public land survey monument record is correct and complete to the best of my knowledge and belief.

Larry D. Hoium Date 12/09/13

Larry D. Hoium, Anoka County Surveyor
Minnesota License Number 18165

CERTIFICATE OF LOCATION OF GOVERNMENT CORNER

County of Anoka State of Minnesota

South 1/4 Corner of Sec. 26 Township 31 Range 23

On the 29th day of July, 1959, the described corner was evidenced by a concrete monument

JS SH

and to perpetuate the location of said corner, at the exact location thereof, a permanent marker was placed consisting of a cast iron monument

AFTER

NRS COORD'S 30 Q: 0.06 N: 137770.595

CIM

(4) SHOTS

E: 523924.8207

SET

AND on the 15th day of June, 2006, said permanent marker was found and the ties were

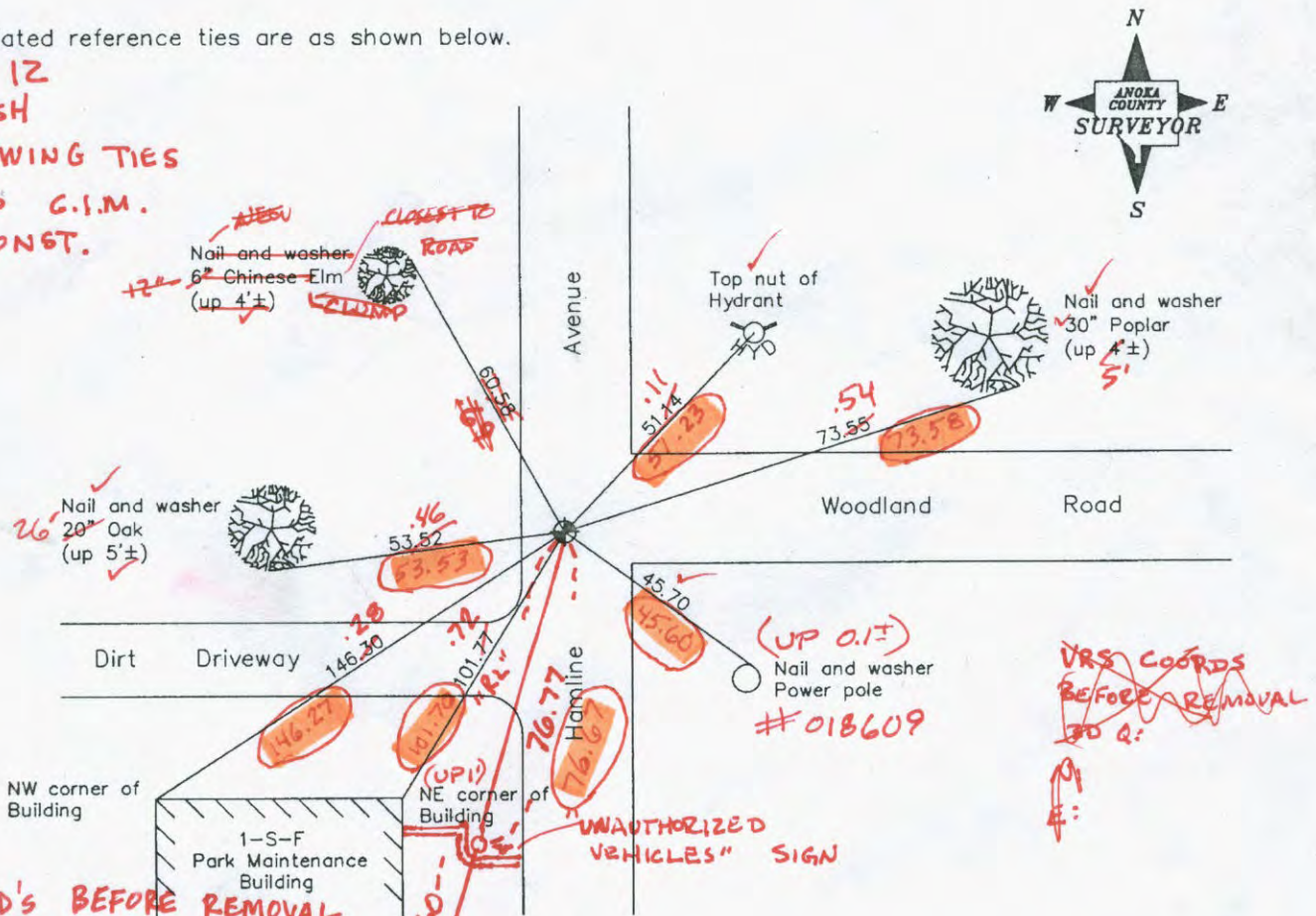
BACK

@ Co. PROJECT COORD'S updated

LOOK @ TIES DONE IN '95 + '98 TO COMPARE

Updated reference ties are as shown below.

8-20-12
JS SH
T/T + SWING TIES
REMOVED C.I.M.
FOR CONST.



VRS COORD'S BEFORE REMOVAL
30 Q: 0.05 N: 137770.7719
E: 523924.7934

Revised date	N.A.D. 1983 Coordinates (1996 Adjustment)
6/06/95	County Project Coordinates
11/06/98	Northing 137770.6123
6/15/06	Easting 523924.8474
	Date 10/28/98

I hereby certify that this United States public land survey monument record is correct and complete to the best of my knowledge and belief.

Larry D. Hoium Date 6/15/06

Larry D. Hoium, Anoka County Surveyor
Minnesota License Number 18165

C-L-F

CERTIFICATE OF LOCATION OF GOVERNMENT CORNER

County of Anoka

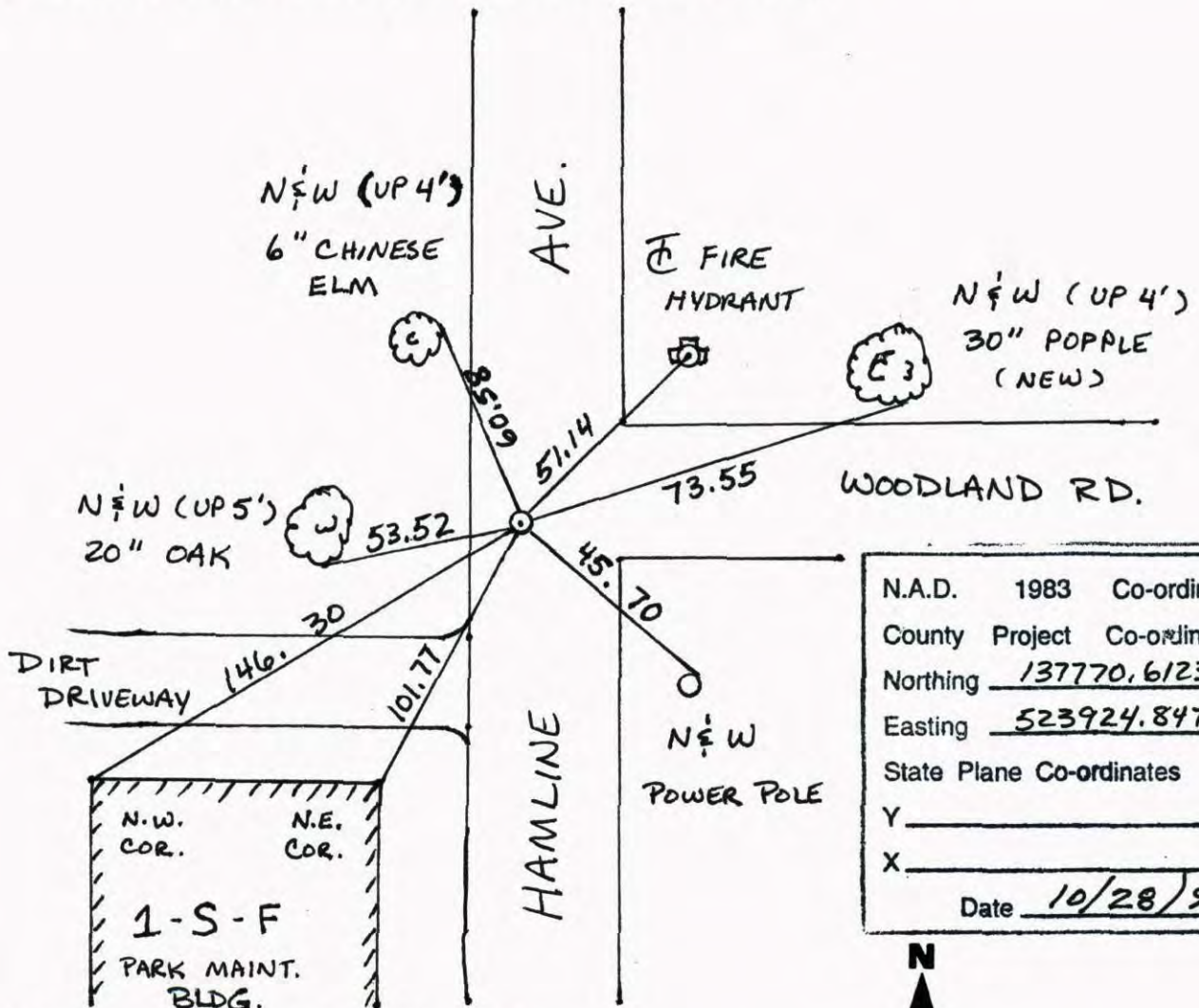
State of Minnesota

SOUTH $\frac{1}{4}$ Corner of Sec. 26 Township 31 Range 23

I hereby certify that on the 29 day of JULY, 19 99, I found the described corner which was evidenced by CONCRETE MONUMENT

and I further certify that to perpetuate the location of said corner, I did, at the exact location thereof, place a permanent marker consisting of CAST IRON MONUMENT

which reference or witness monuments are located in the manner following:



N.A.D.	1983	Co-ordinates
County	Project	Co-ordinates
Northing		<u>137770.6123</u>
Easting		<u>523924.8474</u>
State Plane Co-ordinates		
Y		_____
X		_____
Date		<u>10/28/98</u>

Revised date	Revised date	Revised date
<u>4-11-94</u>		
<u>6-6-95</u>		
<u>11-6-98</u>		
<u>6-15-06</u>		



CERTIFICATE OF LOCATION OF GOVERNMENT CORNER

County of Anoka

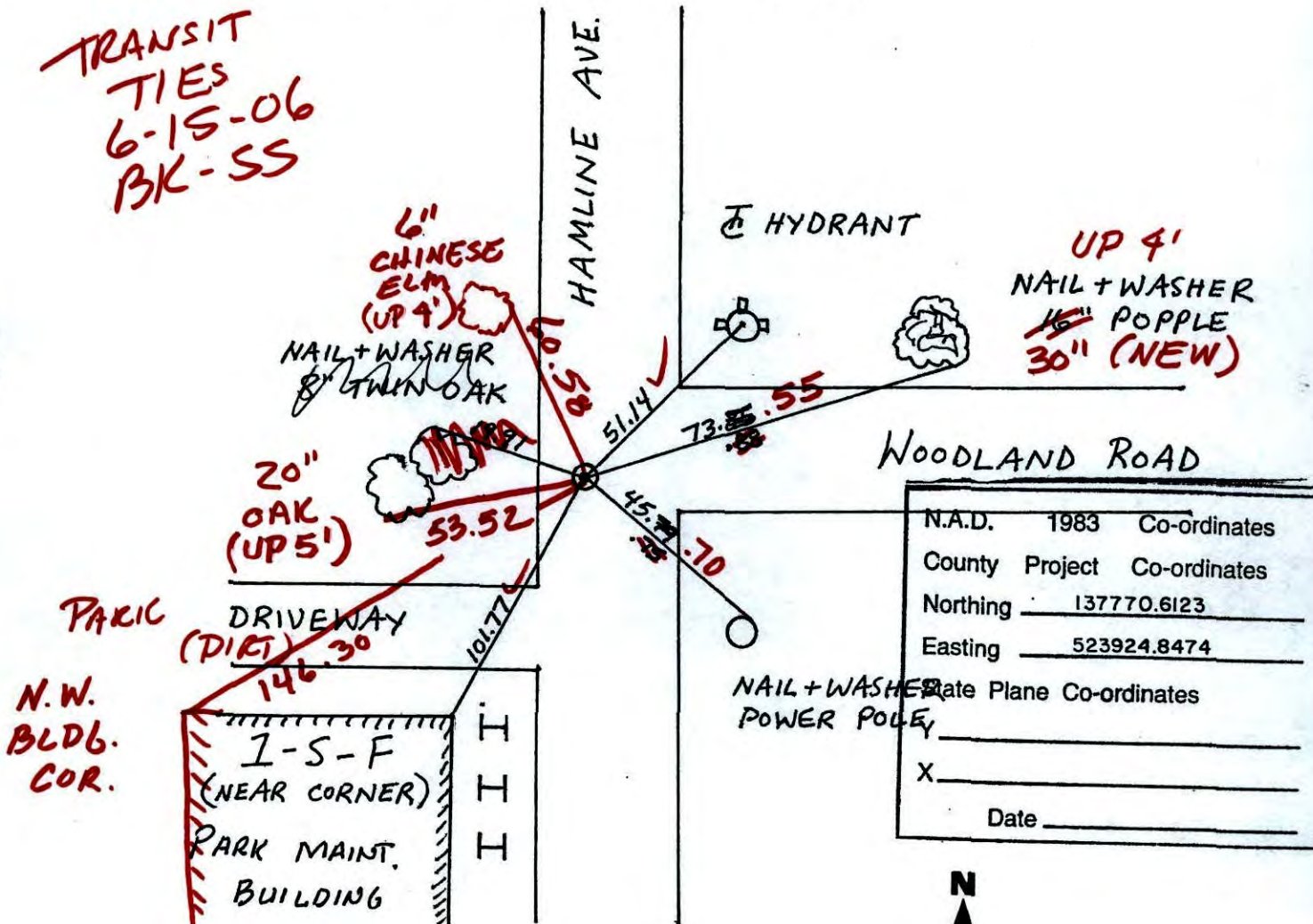
State of Minnesota

SOUTH 1/4 Corner of Sec. 26 Township 31 Range 23

I hereby certify that on the 29 day of JULY, 1959, I found the described corner which was evidenced by CONCRETE MONUMENT

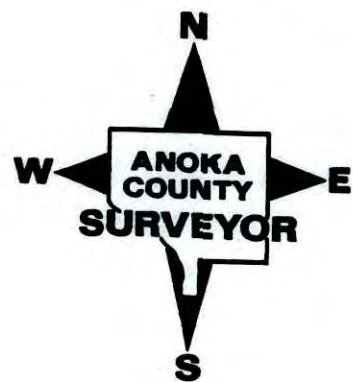
and I further certify that to perpetuate the location of said corner, I did, at the exact location thereof, place a permanent marker consisting of CAST IRON MONUMENT

which reference or witness monuments are located in the manner following:



N.A.D.	1983	Co-ordinates
County	Project	Co-ordinates
Northing	137770.6123	
Easting	523924.8474	
Date Plane	Co-ordinates	
X	_____	
Date	_____	

Revised date	Revised date	Revised date
4-11-94		
6-6-95		
11-6-98		



CERTIFICATE OF LOCATION OF GOVERNMENT CORNER

County of Anoka

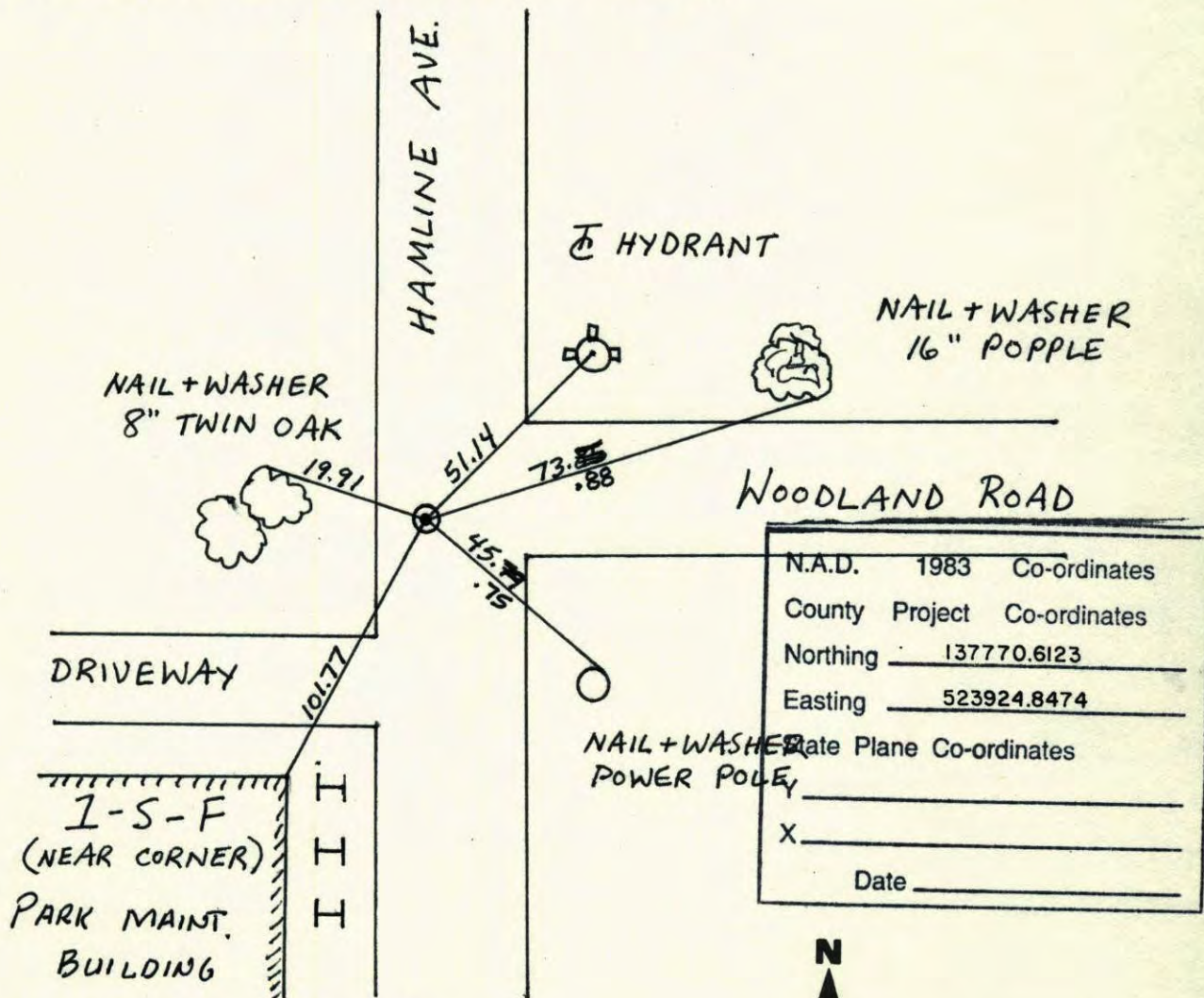
State of Minnesota

SOUTH 1/4 Corner of Sec. 26 Township 31 Range 23

I hereby certify that on the 29 day of JULY, 1959, I found the described corner which was evidenced by CONCRETE MONUMENT

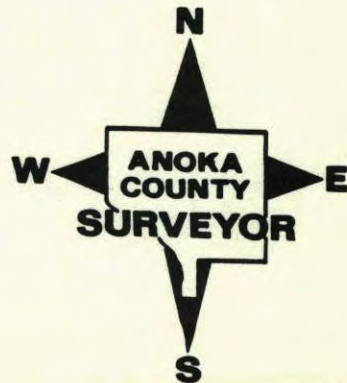
and I further certify that to perpetuate the location of said corner, I did, at the exact location thereof, place a permanent marker consisting of CAST IRON MONUMENT

which reference or witness monuments are located in the manner following:

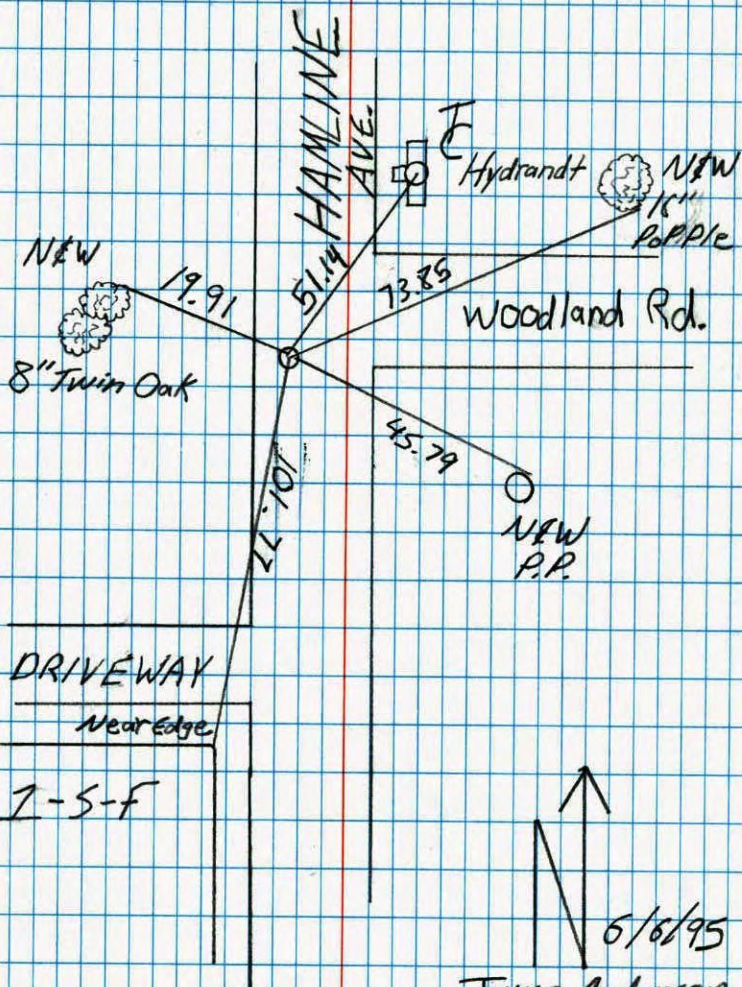


N.A.D.	1983	Co-ordinates
County	Project	Co-ordinates
Northing	<u>137770.6123</u>	
Easting	<u>523924.8474</u>	
Date Plane Co-ordinates		
X _____		
Date _____		

Revised date	Revised date	Revised date
<u>4-11-94</u>		
<u>6-6-95</u>		
<u>11-6-98</u>		



S 1/4 Sec. 26 T. 31 R. 23
CAST IRON MON.

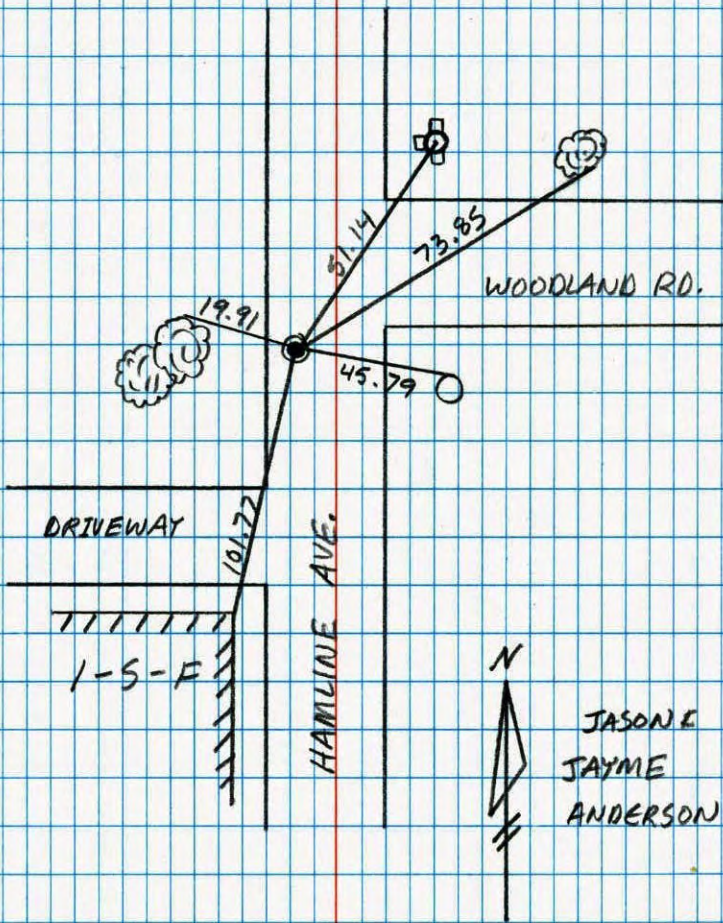


Jayme Anderson
Jason Anderson

NATIONAL PRINTRAST NO. 446

SOUTH 1/4 SEC. 26 T. 31 R. 23

RETIE CAST IRON



JASON E
JAYME
ANDERSON

NATIONAL PRINTRAST NO. 446

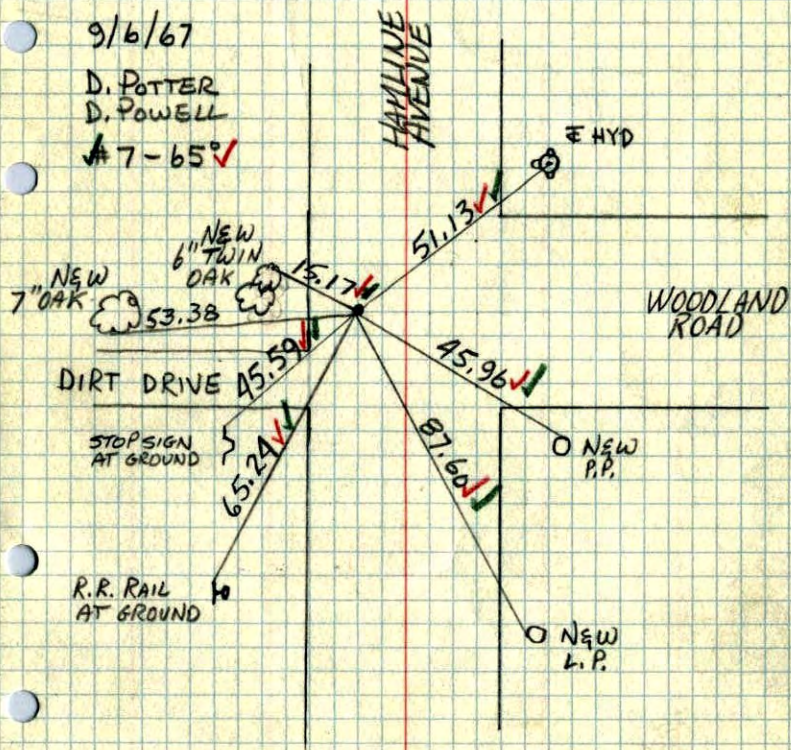
S 1/4 COR. SEC. 26, T 31, R 23

CAST IRON MON. FLUSH
CONCRETE MON. DOWN 1.92'

9/6/67

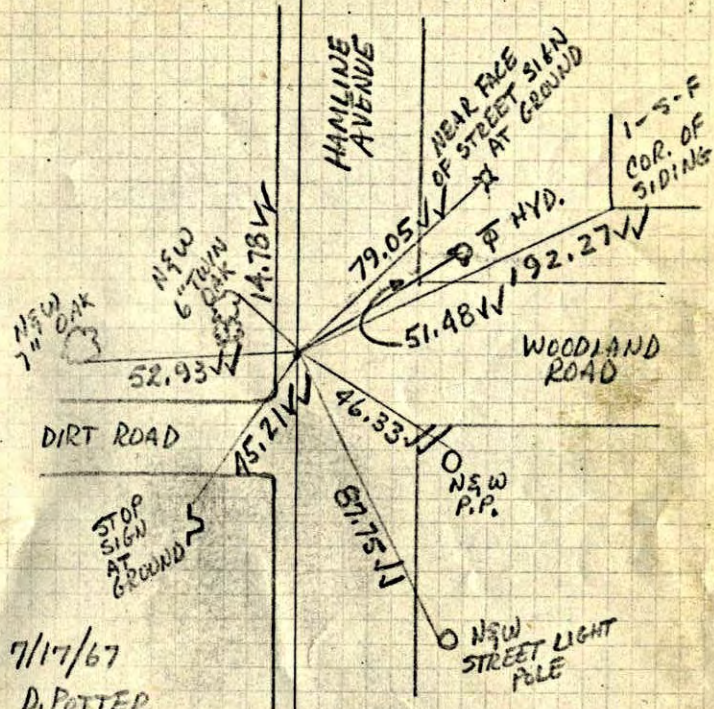
D. POTTER
D. POWELL

47-65



S 1/4 COR. SEC. 26, T 31, R 23

SET 3/4\" IRON PIPE FLUSH



7/17/67

D. POTTER
D. POWELL

47-68

FOUND CONCRETE MON. DOWN 1.92'

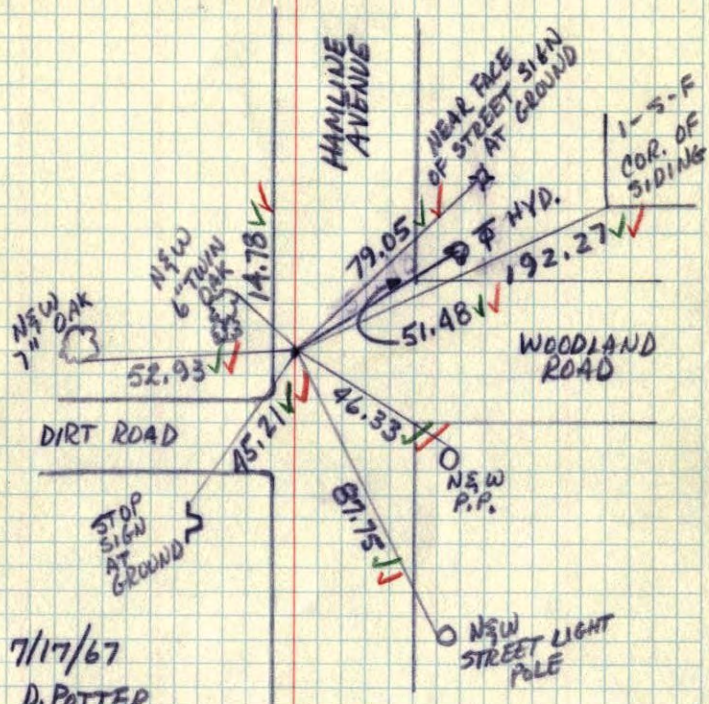
3/4\" IRON PIPE AZ WEST 4.06' SOUTH

TIES SWING TO POINT .46' WEST &
.03' SOUTH OF CONCRETE MON.

CON. MON. INTACT AND PLUMB SET
C.I. TO CONCRETE MON.

S¹/₄ COR. SEC. 26, T 31, R 23

SET 3/4" IRON PIPE FLUSH

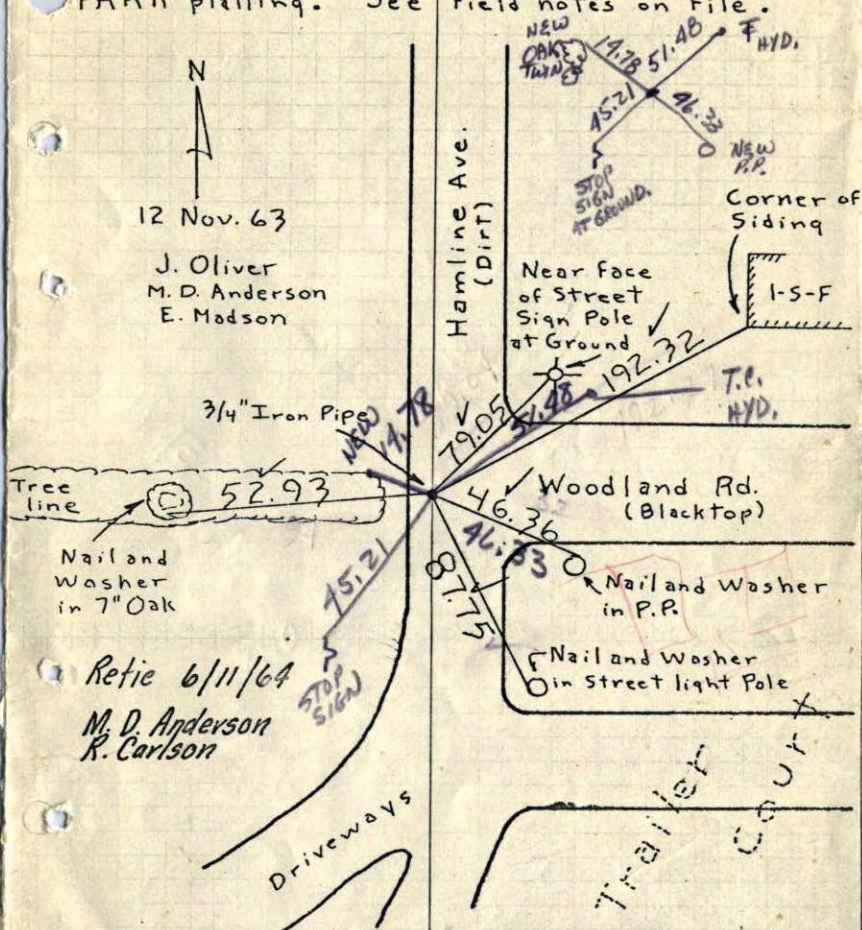


7/17/67
D. POTTEE
D. POWELL
✓ 7-68 ✓

89

So. 1/4 Cor. Sec. 26, T 31, R 23

Set 3/4" Iron Pipe down 0.1' from LEXINGTON
PARK platting. See field notes on File.



N
12 Nov. 63

J. Oliver
M. D. Anderson
E. Madson

3/4" Iron Pipe

Tree line

Nail and Washer in 7" Oak

Retie 6/11/64
M. D. Anderson
R. Carlson

Driveways

Trailer Court

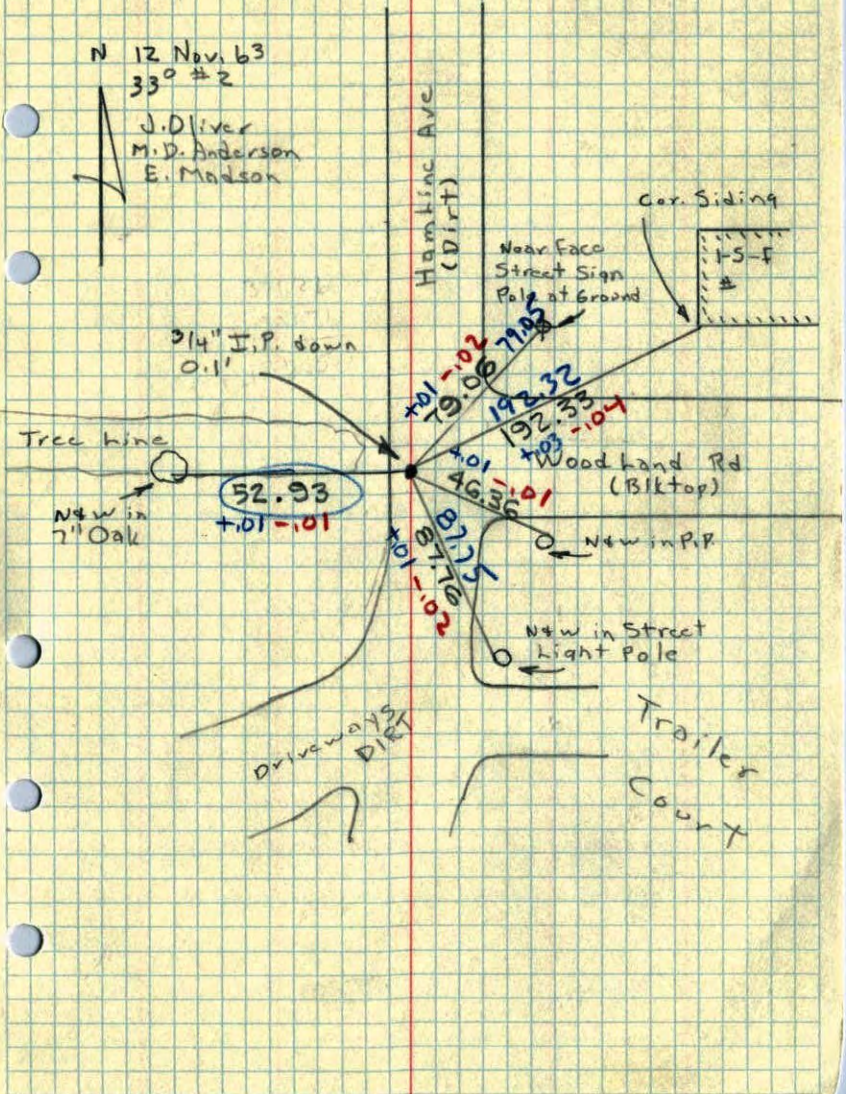
Nail and Washer in P.R.

Nail and Washer in Street light Pole

TEMPERATURE CORRECTED ROLAND W. ANDERSON
AND HORIZONTALLY TAPED MEASUREMENTS
COUNTY SURVEYOR
ANOKA COUNTY, MINNESOTA

So. 1/4 Cor. Sec. 26, T31, R23

Set 3/4" I.P. down 0.1' from LEXINGTON PARK platting - See field notes on file.



N 1/16 COR. ON Center line Sec

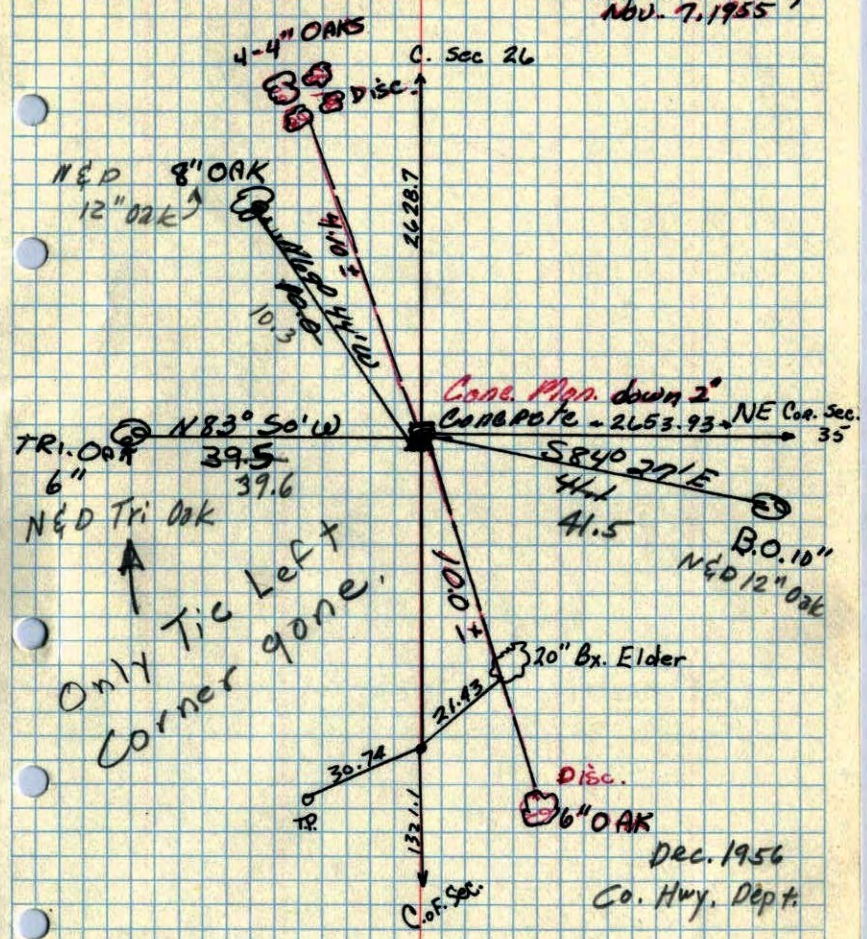
61

S 1/4 Cor. of Sec. 26 + 31 R23 V

Conc. Man.

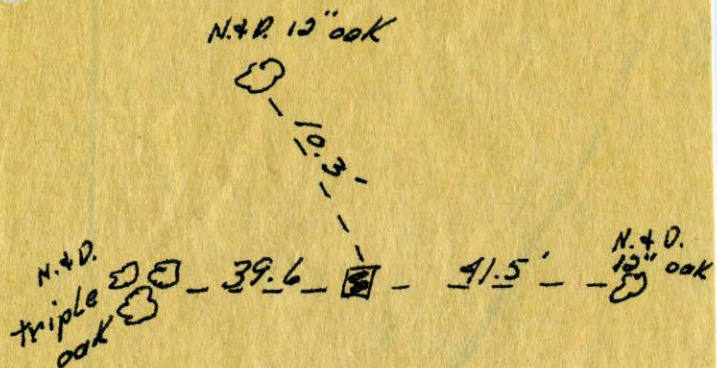
Down 2'

Retired Charles O. Georgi Nov. 7, 1955

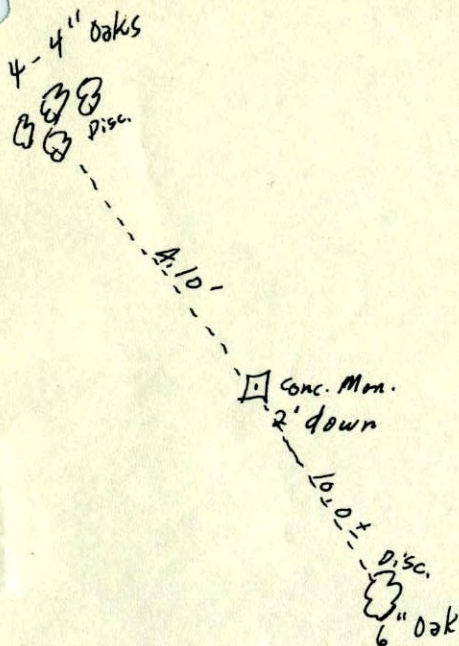


July 29, 1947 Onetweight

5¹/₄ cor. sec. 26 + 31 R23
Uncovered Dec. 1956 Cor. Mon. 2' below



5¹/₄ Corn. of Sec. 26 31-23



u

✓