

# CERTIFICATE OF LOCATION OF GOVERNMENT CORNER

County of Anoka

State of Minnesota

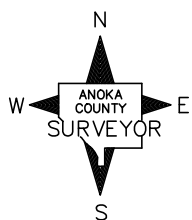
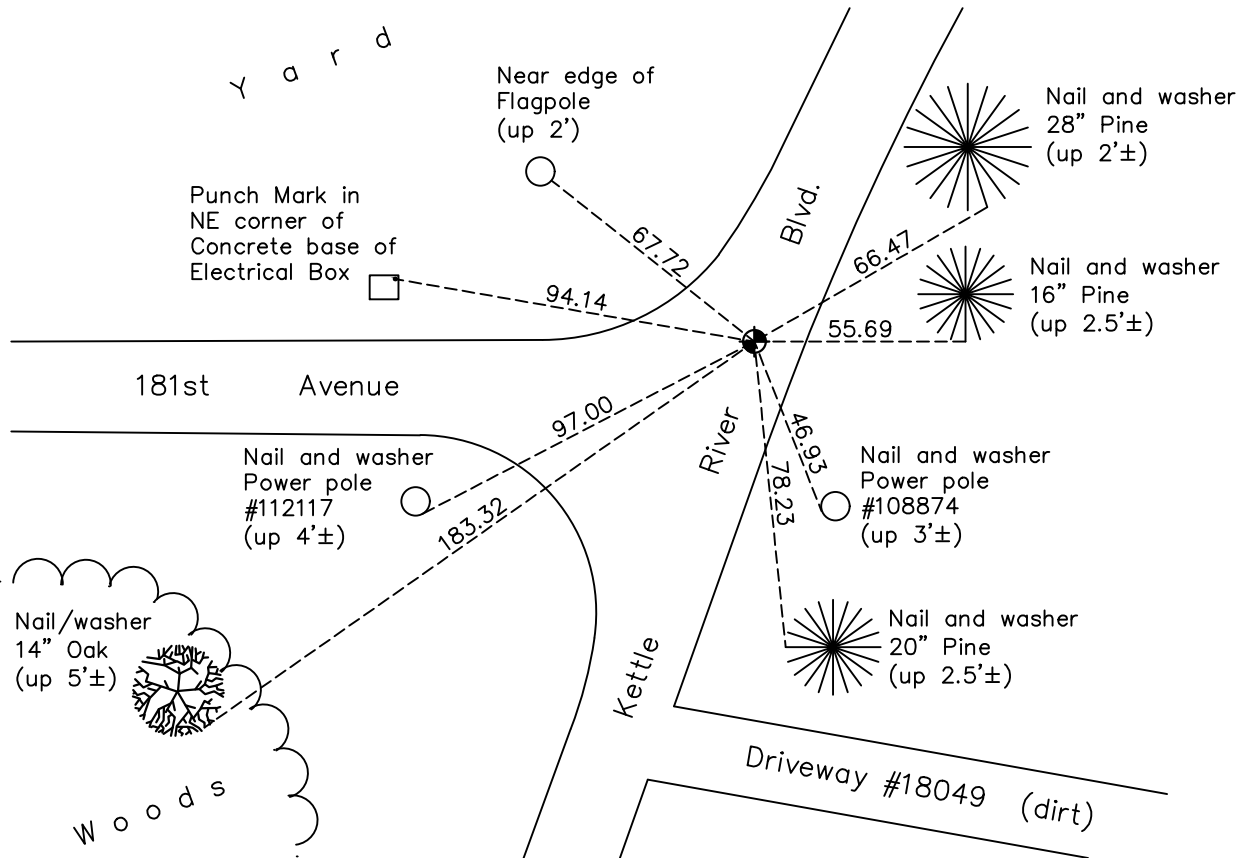
Witness Corner of Sec. 1 Township 32 Range 22  
(on north line of NE 1/4)

On the 22nd day of October, 1986, the described corner was evidenced by area resurvey

and to perpetuate the location of said corner, at the exact location thereof, a permanent marker was placed consisting of a cast iron monument

AND on the 31st day of May, 2022, said permanent marker was found flush and the  
ties were updated

Updated reference ties are as shown below.



N.A.D. 1983 Coordinates  
(1996 Adjustment)

County Project Coordinates	
Northing	<u>195504.8475</u>
Easting	<u>561479.9004</u>
Date	<u>6/16/03</u>

Revision Date  
7/18/2022

I hereby certify that this United States public land survey monument record is correct and complete to the best of my knowledge and belief.

*David Zieglmeier* Date 12/7/23

David Zieglmeier Anoka County Surveyor  
Minnesota License Number 46179

# HISTORY OF GOVERNMENT CORNER

Page No. 1

County of Anoka

State of Minnesota

Witness Corner of Sec. 1 Township 32 Range 22  
(on north line of NE 1/4)

## **CORNER HISTORY:**

October 22, 1986 - Set cast iron monument using area resurvey. Established ties to monument.

August 13, 1987 - Found cast iron monument and updated ties.

August 10, 1995 - Found cast iron monument and updated ties.

June 16, 2003 - Established NAD 1983 (1996 adj.) Anoka County project coordinates by static GPS methods.

October 16, 2007 - Found cast iron monument and updated ties.

October 7, 2014 - Found cast iron monument down 0.2'±. Verified position by VRS GPS methods. Updated ties.

October 10, 2014 - Raised cast iron monument flush.

June 5, 2019 - Found cast iron monument flush. Verified position by VRS GPS methods and updated ties prior to road construction. Removed monument.

September 30, 2019 - Reset cast iron monument flush after construction using static GPS methods. Verified position by VRS GPS methods. Updated ties.

May 31, 2022 - Found cast iron monument flush, verified position by VRS GPS method and updated ties.