

CERTIFICATE OF LOCATION OF GOVERNMENT CORNER

County of Anoka

State of Minnesota

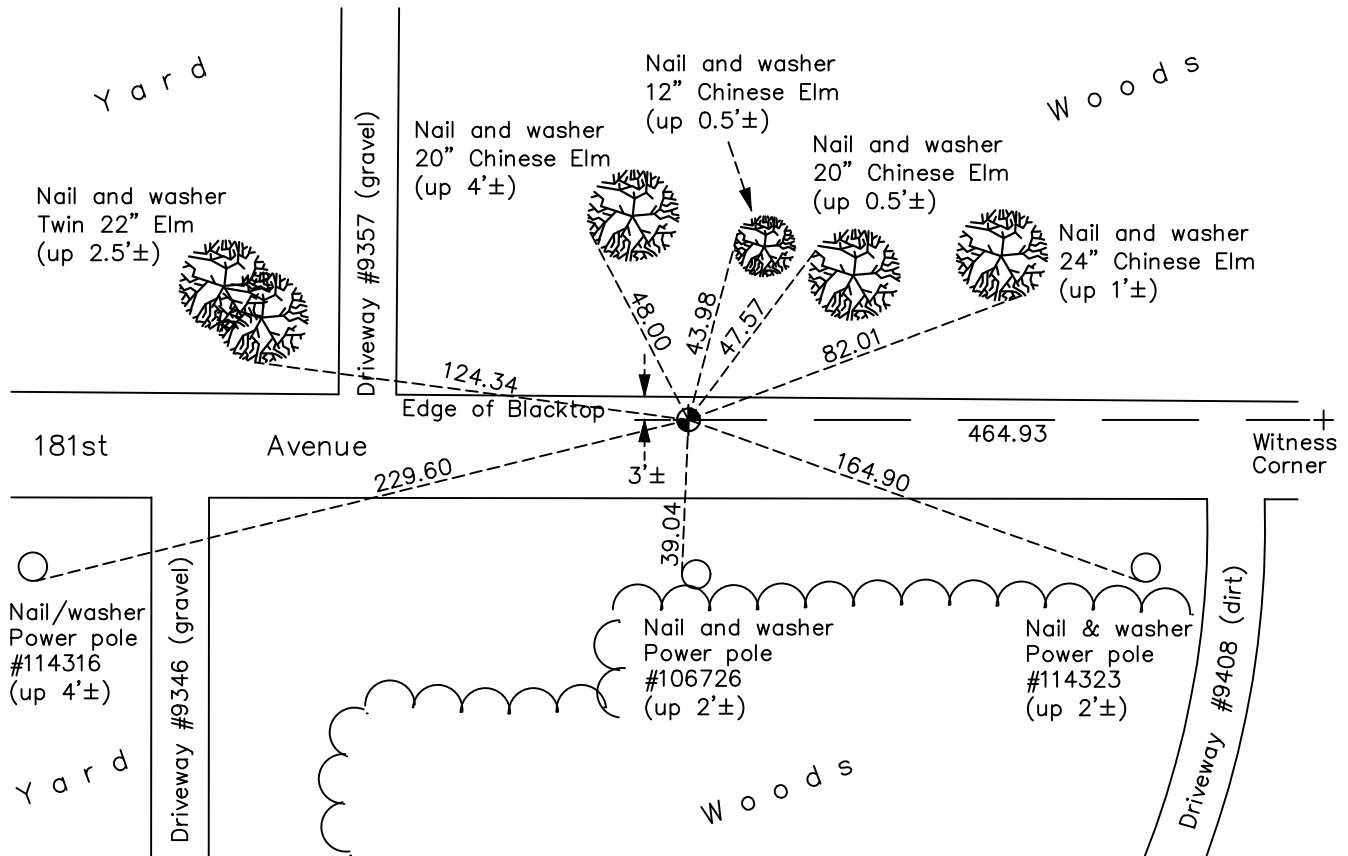
North 1/4 Corner of Sec. 1 Township 32 Range 22

On the 14th day of July, 1982, the described corner was evidenced by a 1/2" iron pipe set by Don Hult and area resurvey proved the position

and to perpetuate the location of said corner, at the exact location thereof, a permanent marker was placed consisting of a cast iron monument

AND on the 26th day of May, 2022, said permanent marker was found flush and the ties were updated

Updated reference ties are as shown below.



Revision Date
7/18/2022

N.A.D. 1983 Coordinates
(1996 Adjustment)

County Project Coordinates	
Northing	<u>195505.1400</u>
Easting	<u>561014.9371</u>
Date	<u>6/16/03</u>

I hereby certify that this United States public land survey monument record is correct and complete to the best of my knowledge and belief.

David Zieglmeier Date 12/7/23

David Zieglmeier Anoka County Surveyor
 Minnesota License Number 46179

HISTORY OF GOVERNMENT CORNER

Page No. 2

County of Anoka

State of Minnesota

North 1/4 Corner of Sec. 1 Township 32 Range 22

CORNER HISTORY:

July 14, 1982 - Found 1/2" iron pipe set by D. Hult. Verified position using area resurvey. Replaced iron pipe with cast iron monument down 0.5'±. Updated ties.

July 14, 1986 - Found cast iron monument and updated ties.

August 14, 1989 - Found cast iron monument and updated ties.

August 10, 1995 - Found cast iron monument and updated ties.

June 16, 2003 - Established NAD 1983 (1996 adj.) Anoka County project coordinates by static GPS methods.

October 16, 2007 - Found cast iron monument and updated ties.

October 7, 2014 - Found cast iron monument and updated ties.

September 27, 2019 - Found cast iron monument broken. Replaced with a new cast iron monument flush using static GPS methods. Verified position by VRS GPS methods. Updated ties.

May 26, 2022 - Found cast iron monument, verified position by VRS GPS method and updated ties.