

CERTIFICATE OF LOCATION OF GOVERNMENT CORNER

County of Anoka

State of Minnesota

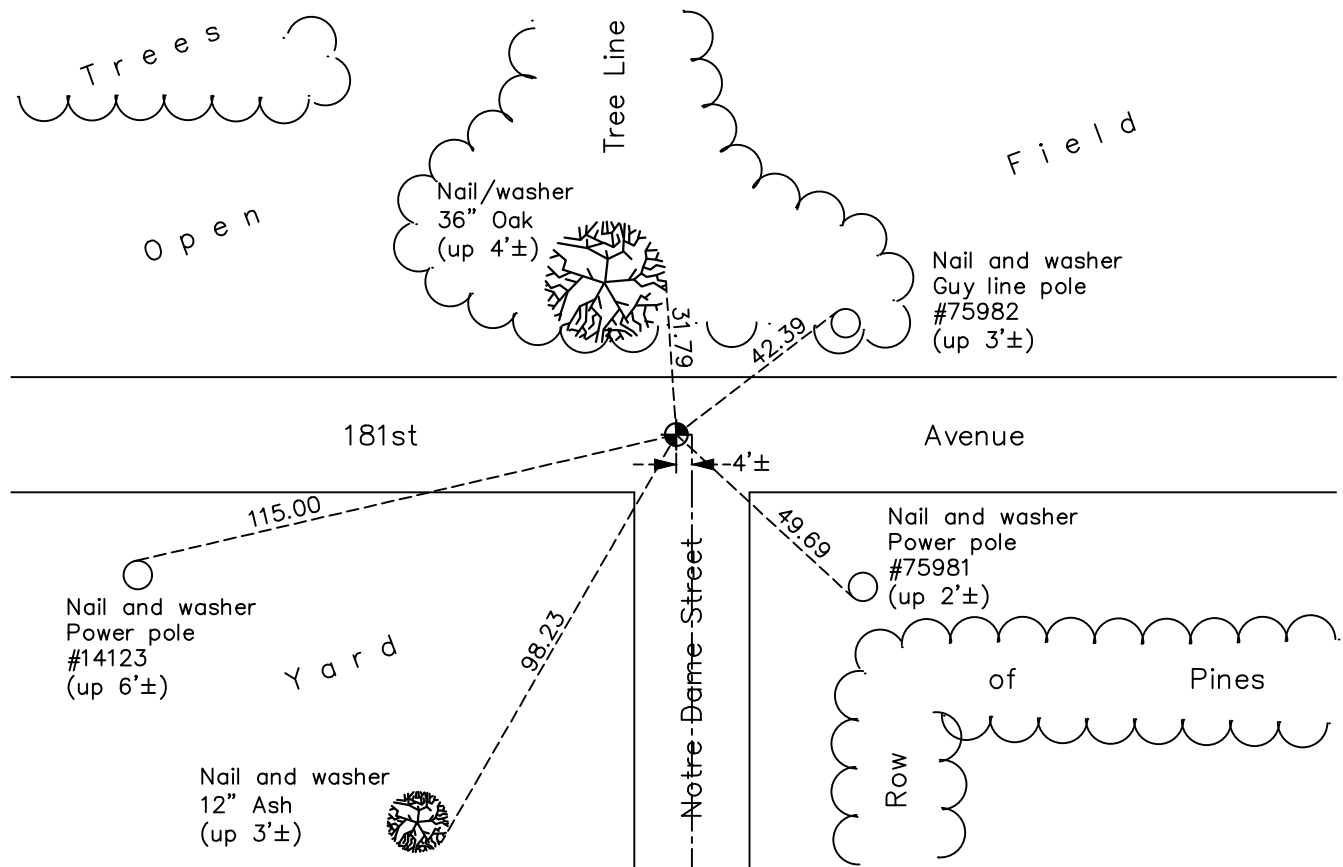
North 1/4 Corner of Sec. 2 Township 32 Range 22

On the ____ day of May, 1965, the described corner was evidenced by a 6" x 6" stone monument found by Don Hult

and to perpetuate the location of said corner, at the exact location thereof, a permanent marker was placed consisting of a cast iron monument

AND on the 26th day of May, 2022, said permanent marker was found flush and the ties were updated

Updated reference ties are as shown below.



Revision Date
7/18/2022

N.A.D. 1983 Coordinates
 (1996 Adjustment)

County Project Coordinates	
Northing	<u>195508.4252</u>
Easting	<u>555751.9940</u>
Date	<u>6/17/03</u>

I hereby certify that this United States public land survey monument record is correct and complete to the best of my knowledge and belief.
David Zieglmeier Date 12/7/23
 David Zieglmeier Anoka County Surveyor
 Minnesota License Number 46179

HISTORY OF GOVERNMENT CORNER

Page No. 4

County of Anoka

State of Minnesota

North 1/4 Corner of Sec. 2 Township 32 Range 22

CORNER HISTORY:

May 1965 - Don C. Hult found a 6" x 6" stone monument down 1.3' and updated the ties.

August 22, 1968 - Found 6" x 6" stone monument down 1.3'. Set cast iron monument down 0.5'± on top of stone monument. Updated ties.

June 5, 1973 - Found cast iron monument and updated ties.

August 3, 1976 - Found cast iron monument and updated ties.

July 14, 1982 - Found cast iron monument broken on top of stone monument. Set new cast iron monument down 0.5'± on top of stone monument. Updated ties.

August 10, 1995 - Found cast iron monument and updated ties.

June 17, 2003 - Established NAD 1983 (1996 adj.) Anoka County project coordinates by static GPS methods.

November 5, 2007 - Found cast iron monument and updated ties.

October 8, 2014 - Found cast iron monument and updated ties.

September 30, 2019 - Set cast iron monument flush after road construction using static GPS methods. Verified position by VRS GPS methods. Updated ties.

May 26, 2022 - Found cast iron monument, verified position by VRS GPS method and updated ties.