

CERTIFICATE OF LOCATION OF GOVERNMENT CORNER

County of Anoka

State of Minnesota

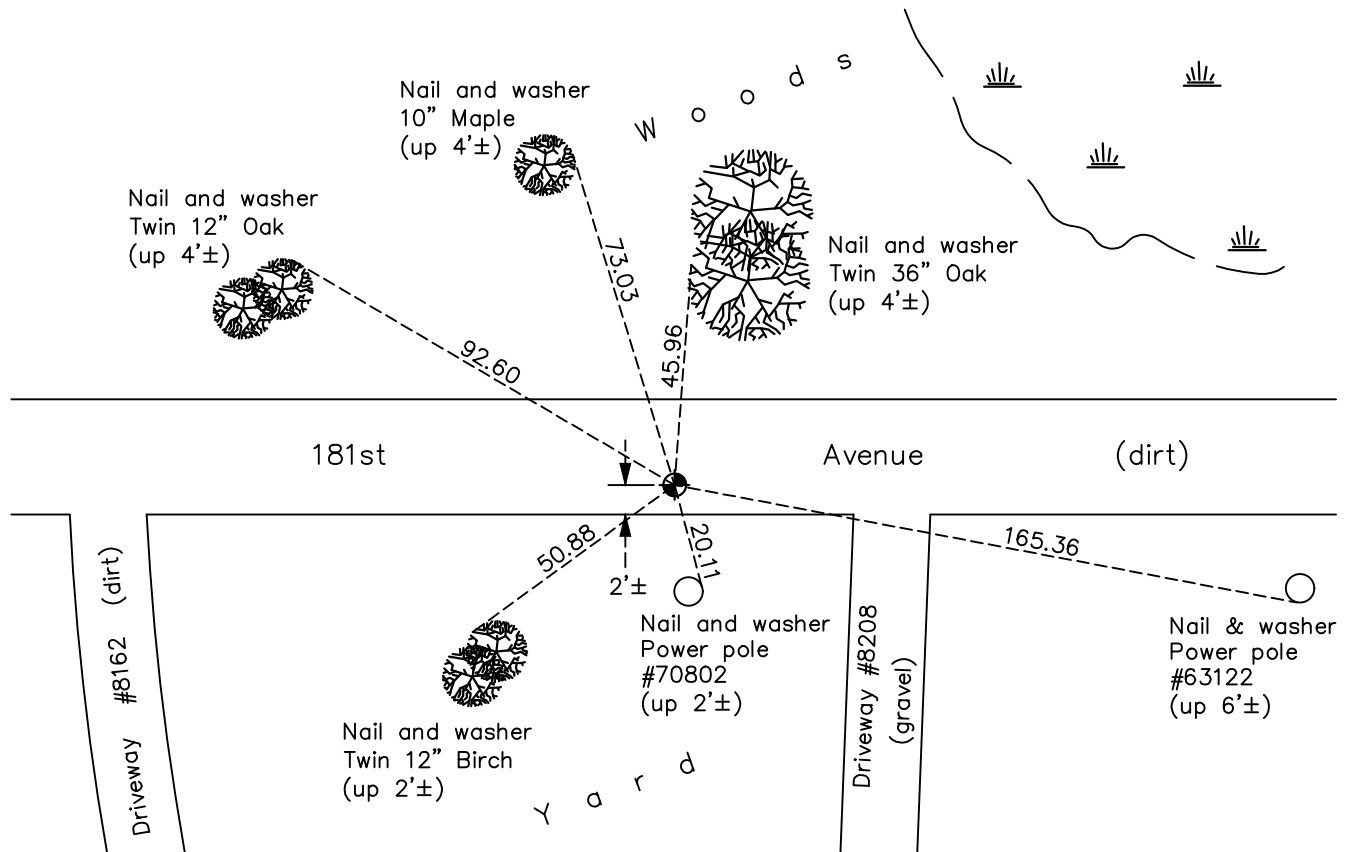
Northeast Corner of Sec. 3 Township 32 Range 22

On the 23rd day of March, 1979, the described corner was evidenced by a 1/2" iron pipe

and to perpetuate the location of said corner, at the exact location thereof, a permanent marker was placed consisting of a cast iron monument

AND on the 26th day of May, 2022, said permanent marker was found down 1.4'± and the ties were updated

Updated reference ties are as shown below.



Revision Date
7/18/2022

N.A.D. 1983 Coordinates
 (1996 Adjustment)

County Project Coordinates	
Northing	<u>195497.1924</u>
Easting	<u>553100.6985</u>
Date	<u>6/17/03</u>

I hereby certify that this United States public land survey monument record is correct and complete to the best of my knowledge and belief.

David Zieglmeier Date 12/7/23

David Zieglmeier Anoka County Surveyor
 Minnesota License Number 46179

HISTORY OF GOVERNMENT CORNER

Page No. 6

County of Anoka

State of Minnesota

Northeast Corner of Sec. 3 Township 32 Range 22

CORNER HISTORY:

March 23, 1979 - Found 1/2" iron pipe down 0.5'± in dirt road. Updated ties.

March 1, 1984 - Found 1/2" iron pipe and replaced with a cast iron monument down 0.5'±. Updated ties.

August 13, 1985 - Found cast iron monument and updated ties.

August 14, 1989 - Found cast iron monument and updated ties.

August 10, 1995 - Found cast iron monument and updated ties.

June 17, 2003 - Established NAD 1983 (1996 adj.) Anoka County project coordinates by static GPS methods.

November 6, 2007 - Found cast iron monument and updated ties.

October 8, 2014 - Found cast iron monument down 1'± and updated ties.

August 1, 2019 - Found cast iron monument down 1'±. Verified position by VRS GPS methods. Updated ties.

May 26, 2022 - Found cast iron monument down 1.4'±. Verified position by VRS GPS method. Updated ties.