

CERTIFICATE OF LOCATION OF GOVERNMENT CORNER

County of Anoka

State of Minnesota

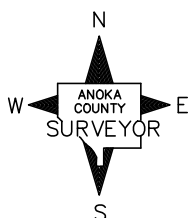
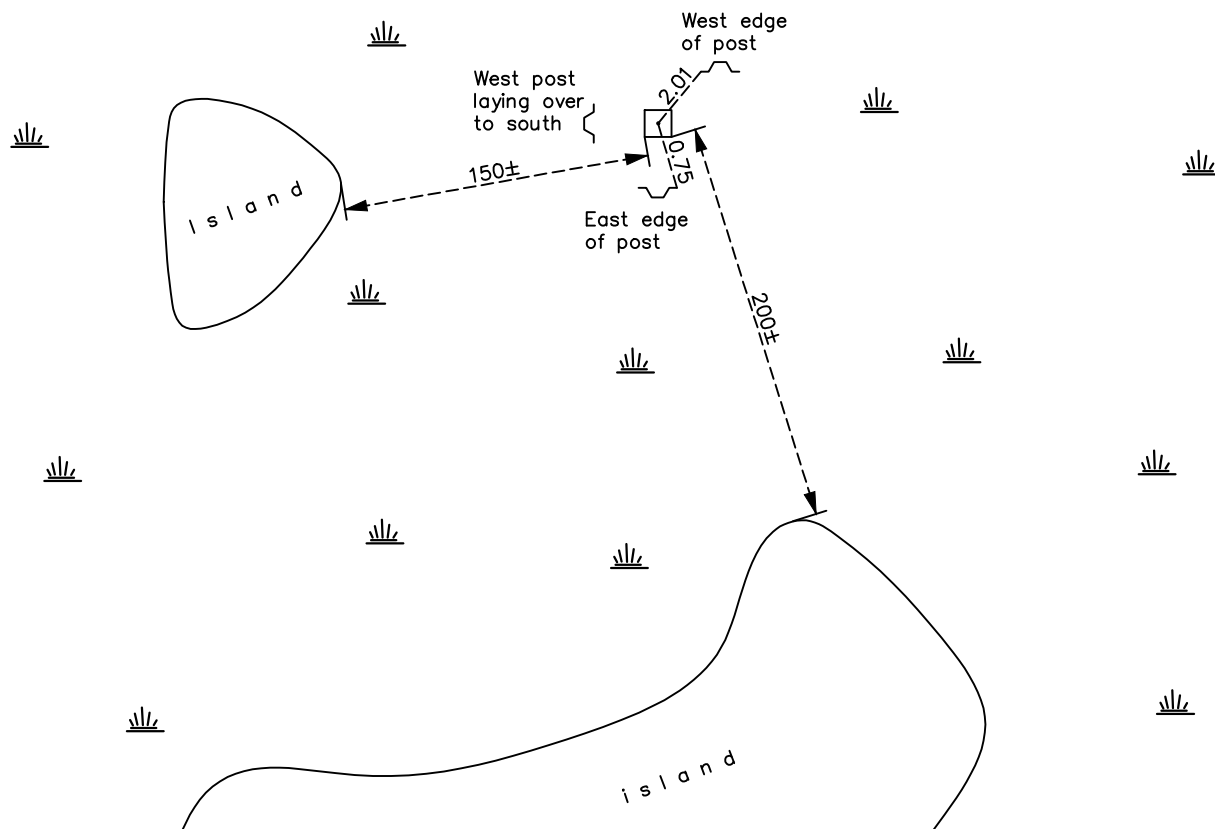
North 1/4 Corner of Sec. 5 Township 32 Range 22

On the 2nd day of February, 1977, the described corner was evidenced by a concrete monument

and to perpetuate the location of said corner, at the exact location thereof, a permanent marker was placed consisting of the same concrete monument

AND on the 3rd day of February, 2025, said permanent marker was found with the top 0.2' broken off. Verified position by RTK GPS method. Updated ties.

Updated reference ties are as shown below.



Revision Date

02/04/2025

N.A.D. 1983 Coordinates
(1996 Adjustment)

County Project Coordinates

Northing 195543.1900Easting 539961.0565Date 1/30/06

I hereby certify that this United States public land survey monument record is correct and complete to the best of my knowledge and belief.

David Zieglmeier Date 3/17/25

David M. Zieglmeier, Anoka County Surveyor

Minnesota License Number 46179

HISTORY OF GOVERNMENT CORNER

Page No. 11

County of Anoka

State of Minnesota

North 1/4 Corner of Sec. 5 Township 32 Range 22

CORNER HISTORY:

August 1847 - This corner was established by James M. Marsh, Deputy Surveyor. Marsh marked the position by "set post at quarter section corner" with two bearing trees marked as accessories.

Jan 1915 - E.G Maxwell set 4" x 4" x 36" concrete monument while resurveying township plat. Measured 40.00 chains East to the NE Corner Sec 5 and 40.00 chains West to the NW Corner Sec 5.

February 2, 1977 - Found concrete monument. Set sign and post 1'± south of monument. No corner ties.

1985, 1995 - Wet

January 30, 2006 - Found concrete monument with the top 0.2' broken off and 0.7' below the ice. Established NAD 1983 (1996 adj.) Anoka County project coordinates by static GPS methods. Established ties to monument.

N = 195543.1900

E = 539961.0565

February 3, 2025 - Found concrete monument down 0.5' with the top broke off in great shape. Verified position by RTK GPS method. Updated ties.