

CERTIFICATE OF LOCATION OF GOVERNMENT CORNER

County of Anoka

State of Minnesota

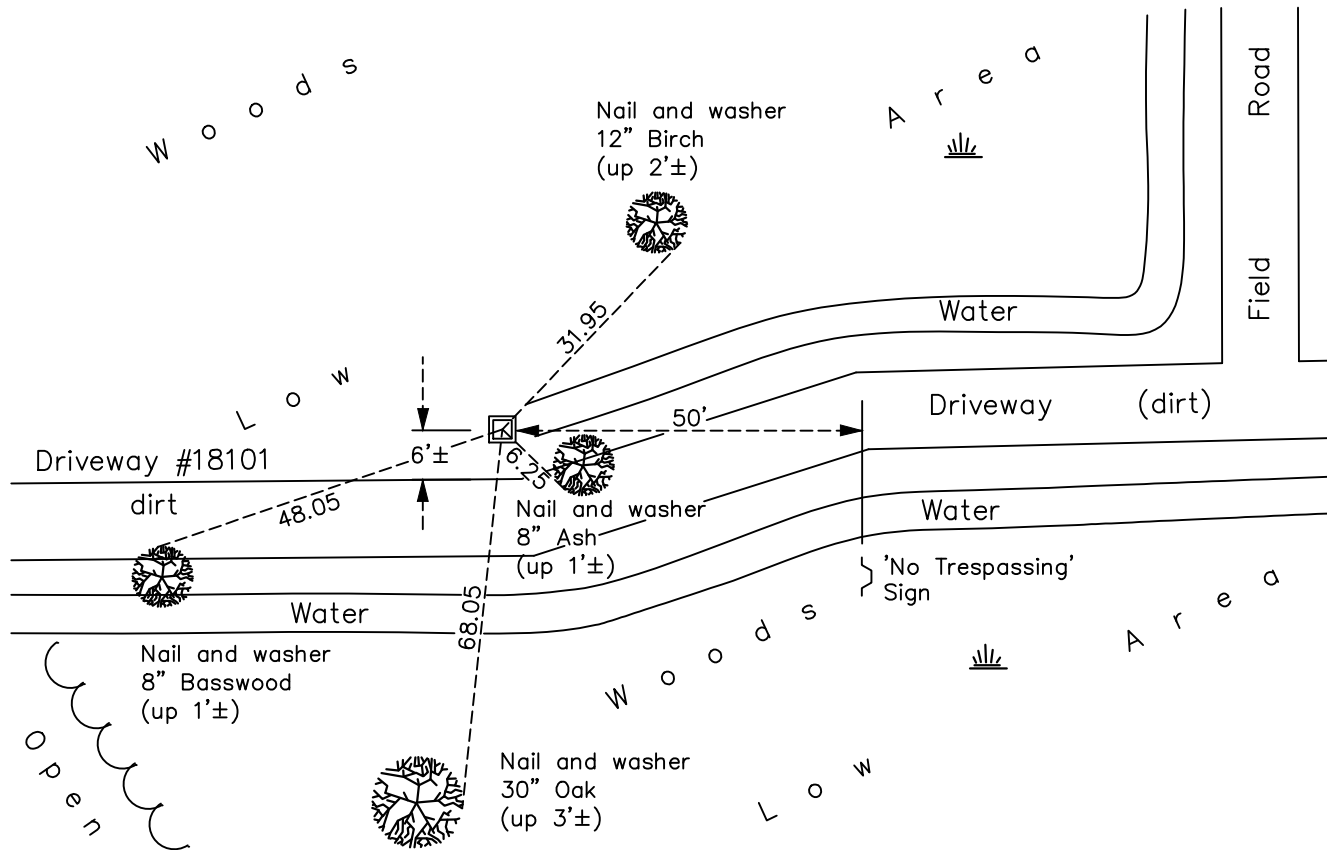
North 1/4 Corner of Sec. 6 Township 32 Range 22

On the 3rd day of September, 1964, the described corner was evidenced by a concrete monument

and to perpetuate the location of said corner, at the exact location thereof, a permanent marker was placed consisting of a red and white iron pipe

AND on the 6th day of June, 2022, said permanent marker was found 2"x2"x8'
steel Telspar monument up 2.5'± w/punchmarked cap. The ties were updated.

Updated reference ties are as shown below.



Revision Date

7/18/2022

N.A.D. 1983 Coordinates
(1996 Adjustment)

County Project Coordinates	
Northing	<u>195563.5940</u>
Easting	<u>534696.3937</u>
Date	<u>7/01/03</u>

I hereby certify that this United States public land survey monument record is correct and complete to the best of my knowledge and belief.

David Zieglmeier Date 12/7/23

David Zieglmeier Anoka County Surveyor
Minnesota License Number 46179

HISTORY OF GOVERNMENT CORNER

Page No. 13

County of Anoka

State of Minnesota

North 1/4 Corner of Sec. 6 Township 32 Range 22

CORNER HISTORY:

September 3, 1964 - Found concrete monument up 8"± and updated ties.

July 6, 1970 - Found concrete monument very loose and updated ties.

September 26, 1974 - Replaced loose concrete monument with a red and white iron pipe up 3'±. Updated ties.

August 6, 1976 - Found red and white iron pipe and updated ties.

August 24, 1979 - Reset red and white iron pipe up 2.5'± and updated ties.

August 14, 1985 - Found red and white iron pipe and updated ties.

August 30, 1989 - Found red and white iron pipe and updated ties.

August 17, 1995 - Found red and white iron pipe and updated ties.

July 1, 2003 - Found red and white iron pipe and updated ties. Established NAD 1983 (1996 adj.) Anoka County project coordinates by static GPS methods.

December 13, 2007 - Found red and white iron pipe and updated ties.

September 30, 2014 - Found red and white iron pipe up 5'± and slightly leaning west. Verified position by VRS GPS methods. Updated ties.

March 17, 2020 - Found red and white iron pipe missing. Set 2" x 2" x 8' steel Telspar monument up 2.5'± w/punchmarked 'County Surveyor cap using static GPS methods. Updated ties.

June 6, 2022 - Found 2" x 2" steel Telespar w/ punchmarked 'County Surveyor' cap up 2.5' ±, verified position by VRS GPS method and updated ties.