

CERTIFICATE OF LOCATION OF GOVERNMENT CORNER

County of Anoka

State of Minnesota

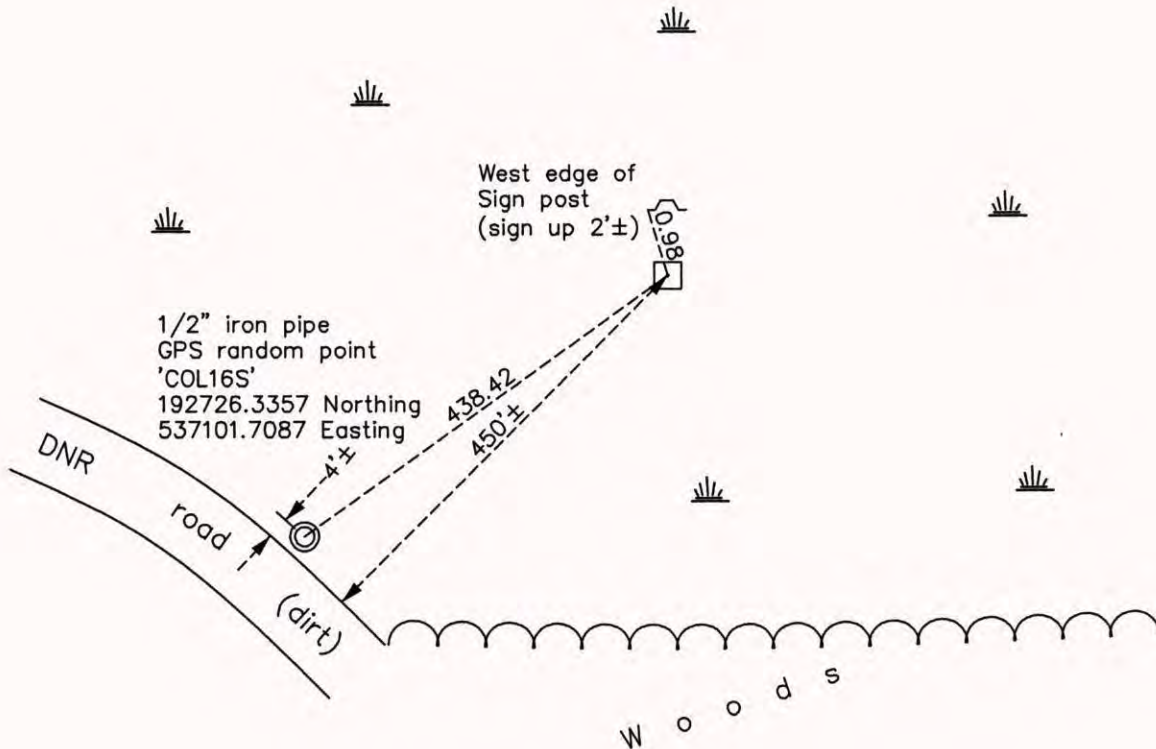
East 1/4 Corner of Sec. 6 Township 32 Range 22

On the 17th day of March, 1977, the described corner was evidenced by a concrete monument

and to perpetuate the location of said corner, at the exact location thereof, a permanent marker was placed consisting of the same concrete monument with a sign and post on the north side

AND on the 8th day of December, 2014, said permanent marker was found and the ties were updated

Updated reference ties are as shown below.



Revision Date
4/29/15

N.A.D. 1983 Coordinates
(1996 Adjustment)

County Project Coordinates	
Northing	193092.6863
Easting	537342.5330
Date	2/01/06

I hereby certify that this United States public land survey monument record is correct and complete to the best of my knowledge and belief.

Larry D. Hoium Date 4/29/15
 Larry D. Hoium, Anoka County Surveyor
 Minnesota License Number 18165