

# CERTIFICATE OF LOCATION OF GOVERNMENT CORNER

County of Anoka

State of Minnesota

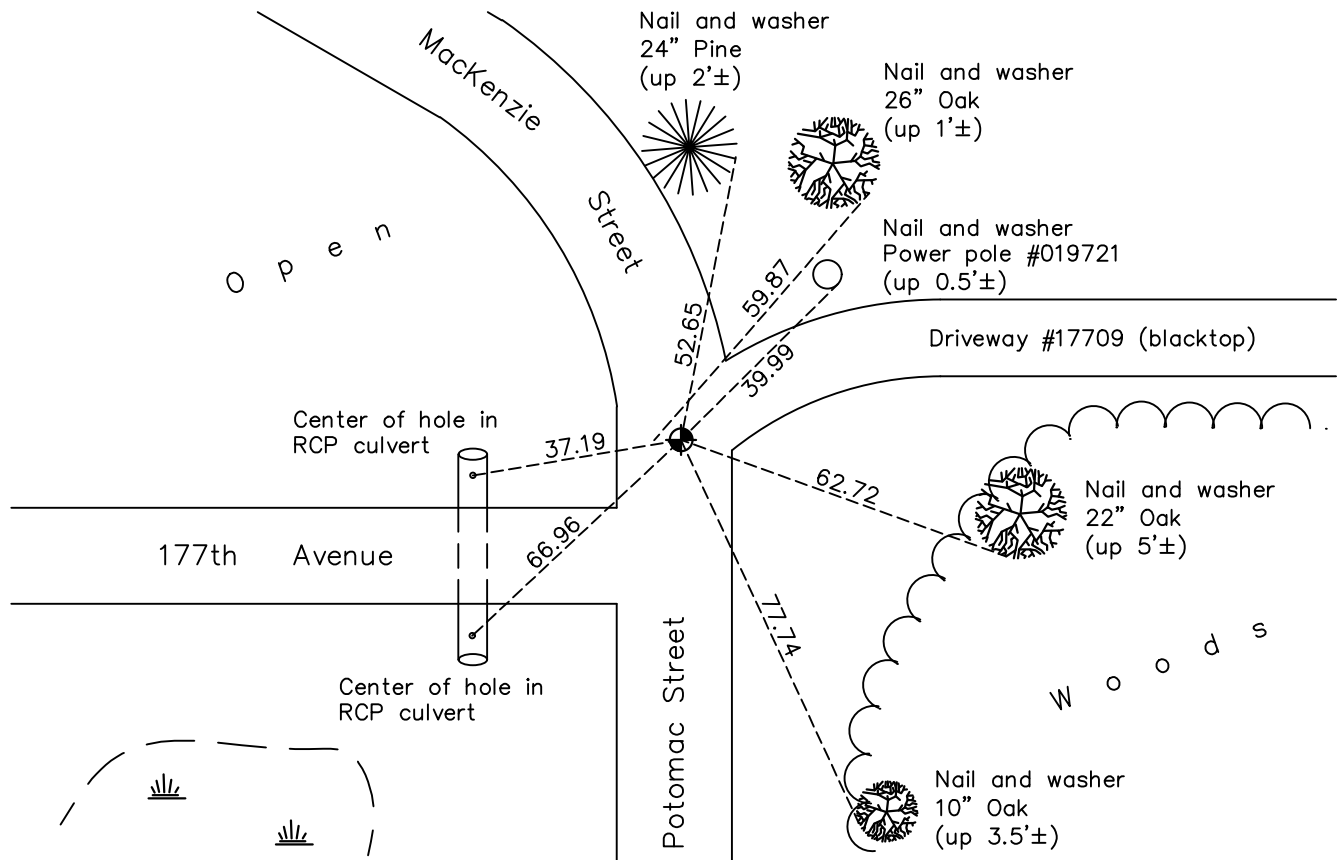
## East 1/4 Corner of Sec. 4 Township 32 Range 22

On the 18th day of September, 1964, the described corner was evidenced by a 1 1/2" well point from ties by R.M. Knutson

and to perpetuate the location of said corner, at the exact location thereof, a permanent marker was placed consisting of a cast iron monument

AND on the 31st day of May, 2022, said permanent marker was found flush and the ties were updated.

Updated reference ties are as shown below.



Revision Date  
 8/12/2022

N.A.D. 1983 Coordinates  
 (1996 Adjustment)

County Project Coordinates	
Northing	193083.1770
Easting	547895.9607
Date	6/24/03

I hereby certify that this United States public land survey monument record is correct and complete to the best of my knowledge and belief.  
*David Zieglmeier* Date 12/7/23  
 David Zieglmeier Anoka County Surveyor  
 Minnesota License Number 46179

# HISTORY OF GOVERNMENT CORNER

Page No. 18

County of Anoka

State of Minnesota

East 1/4 Corner of Sec. 4 Township 32 Range 22

## **CORNER HISTORY:**

1961 - R.M. Knudson found a well point in road and updated ties.

September 18, 1964 - Found 1 1/2" well point down 1'± using R.M. Knudson ties of 1961. Updated ties.

September 11, 1969 - Found well point and replaced with a cast iron monument down 0.5'±. Updated ties.

June 5, 1973 - Found cast iron monument and updated ties.

August 5, 1976 - Found cast iron monument and updated ties.

July 31, 1979 - Found cast iron monument and updated ties.

July 13, 1985 - Found cast iron monument and updated ties.

May 4, 1989 - Reset cast iron monument after road construction. Updated ties.

August 9, 1989 - Found cast iron monument and updated ties.

August 9, 1995 - Found cast iron monument and updated ties.

June 24, 2003 - Established NAD 1983 (1996 adj.) Anoka County project coordinates by static GPS methods.

November 7, 2007 - Found cast iron monument broken off and in need of reset. Checked ties to center fin.

September 19, 2014 - Found cast iron monument broken off and in need of reset. Checked ties to center fin. Checked position by VRS GPS methods.

October 27, 2014 - Found broken cast iron monument and replaced with a new cast iron monument flush using static GPS methods. Verified position by VRS GPS methods. Updated ties.

August 1, 2019 - Found cast iron monument flush. Verified position by VRS GPS methods. Updated ties.

May 31, 2022 - Found cast iron monument flush, verified position by VRS GPS method and updated ties.