

CERTIFICATE OF LOCATION OF GOVERNMENT CORNER

County of Anoka

State of Minnesota

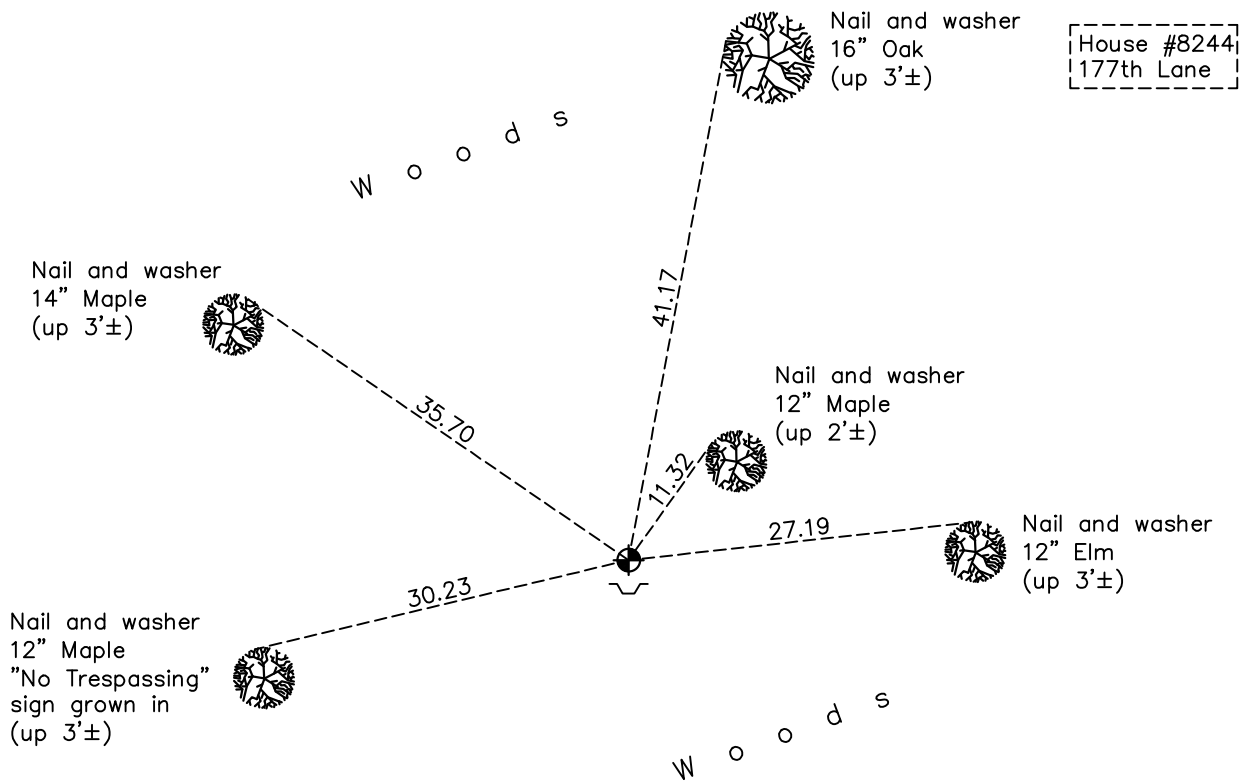
West 1/4 Corner of Sec. 2 Township 32 Range 22

On the 23rd day of September, 1968, the described corner was evidenced by a 3/4" iron pipe

and to perpetuate the location of said corner, at the exact location thereof, a permanent marker was placed consisting of a cast iron monument with a sign and post on the southwest side

AND on the 27th day of June, 2022, said permanent marker was found up 0.2'± and the ties were updated

Updated reference ties are as shown below.



House #8244
177th Lane

N

 ANOKA COUNTY SURVEYOR
 S

Revision Date
8/12/2022

N.A.D. 1983 Coordinates
(1996 Adjustment)

County Project Coordinates	
Northing	<u>193047.7205</u>
Easting	<u>553112.8716</u>
Date	<u>4/18/05</u>

I hereby certify that this United States public land survey monument record is correct and complete to the best of my knowledge and belief.

David Zieglmeier Date 12/7/23

David Zieglmeier Anoka County Surveyor
 Minnesota License Number 46179

HISTORY OF GOVERNMENT CORNER

Page No. 21

County of Anoka

State of Minnesota

West 1/4 Corner of Sec. 2 Township 32 Range 22

CORNER HISTORY:

April 1968 - Found unspecified marker and updated ties by Jim Kurth.

September 23, 1968 - Found 3/4" iron pipe flush 0.13' West of a well point up 2'±. Owner placed well point next to iron pipe. Replaced 3/4" iron pipe with a cast iron monument up 0.1'± and updated ties.

June 6, 1973 - Found cast iron monument and updated ties.

August 5, 1976 - Found cast iron monument and updated ties.

August 6, 1979 - Found cast iron monument and updated ties.

July 23, 1982 - Found cast iron monument and updated ties.

February 10, 1988 - Found cast iron monument and updated ties.

July 12, 1990 - Found cast iron monument and updated ties.

August 15, 1995 - Found cast iron monument and updated ties.

April 18, 2005 - Found cast iron monument. Updated ties. Esablished NAD 1983 (1996 adj.) Anoka County project coordinates by static GPS methods.

October 7, 2014 - Found cast iron monument up 0.2'± and updated ties.

September 24, 2019 - Found cast iron monument up 0.2'± and updated ties.

June 27, 2022 - Found cast iron monument up 0.2'± and updated ties.