

# CERTIFICATE OF LOCATION OF GOVERNMENT CORNER

County of Anoka

State of Minnesota

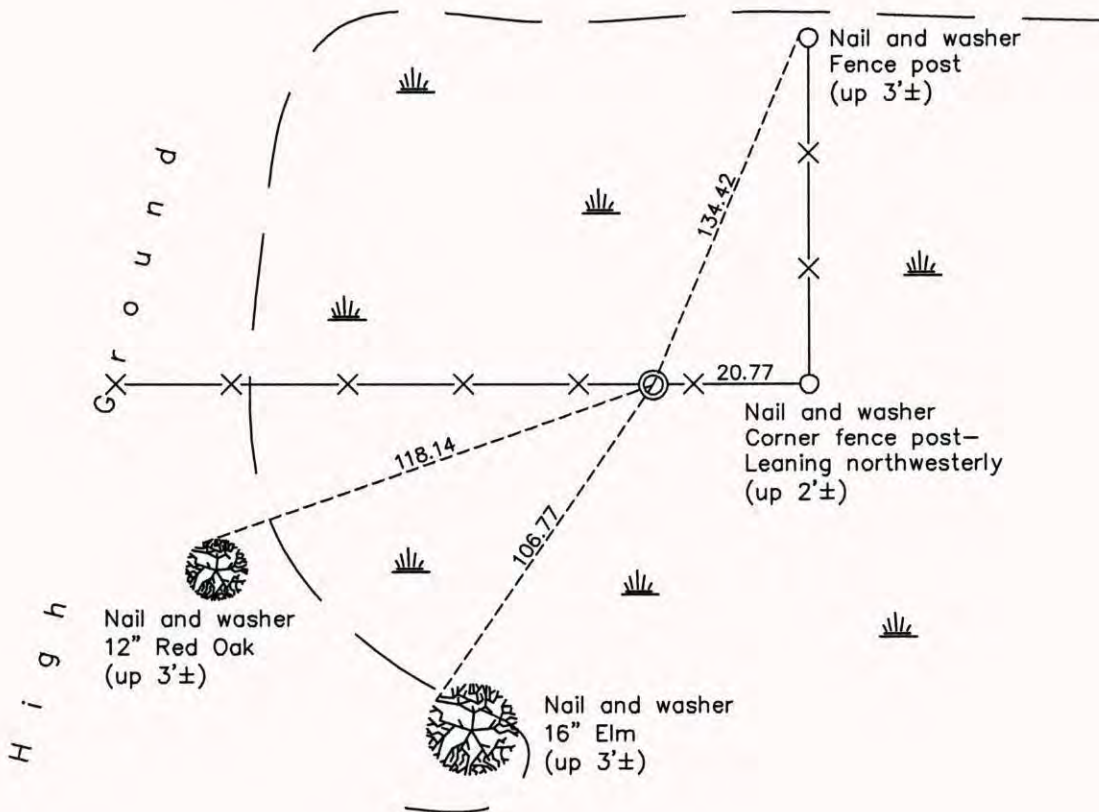
## West 1/4 Corner of Sec. 1 Township 32 Range 22

On the 26th day of December, 1965, the described corner was evidenced by a 2" capped iron pipe

and to perpetuate the location of said corner, at the exact location thereof, a permanent marker was placed consisting of the same 2" capped iron pipe

AND on the 2nd day of December, 2014, said permanent marker was found up 1'± and leaning southerly 0.2'±. The ties are updated.

Updated reference ties are as shown below.



Revision Date  
5/05/15

N.A.D. 1983 Coordinates  
(1996 Adjustment)

County Project Coordinates	
Northing	<u>193025.4007</u>
Easting	<u>558386.0096</u>
Date	<u>5/03/05</u>

I hereby certify that this United States public land survey monument record is correct and complete to the best of my knowledge and belief.

*Larry D. Hoium* Date 5/05/15

Larry D. Hoium, Anoka County Surveyor  
Minnesota License Number 18165