

CERTIFICATE OF LOCATION OF GOVERNMENT CORNER

County of Anoka

State of Minnesota

Witness Corner of Sec. 1 Township 32 Range 22

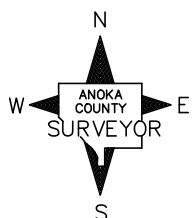
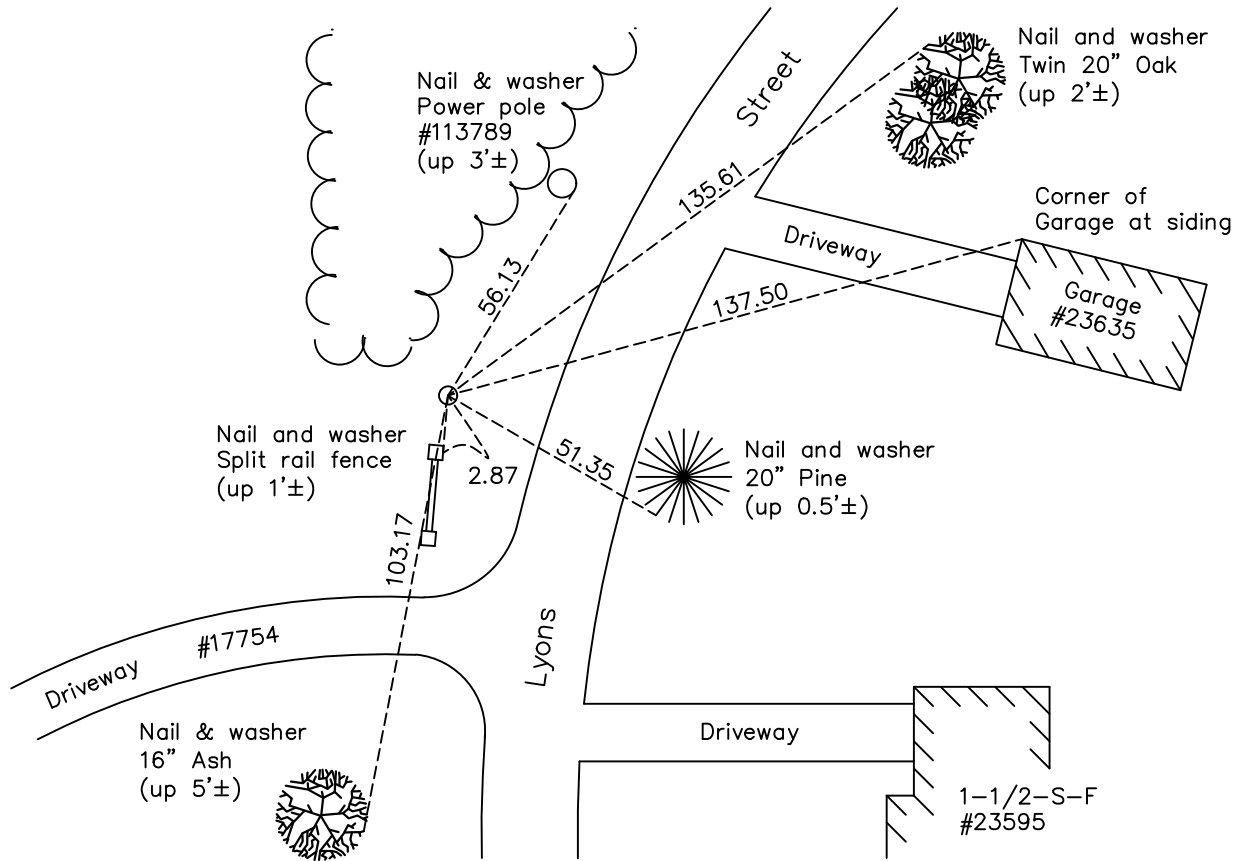
(on east line of NE 1/4)

On the 3rd day of August, 1964, the described corner was evidenced by Don Hult's ties

and to perpetuate the location of said corner, at the exact location thereof, a permanent marker was placed consisting of a 1/2" iron pipe

AND on the 26th day of May, 2022, said permanent marker was found with an "Anoka County" cap in the iron pipe. The ties were updated.

Updated reference ties are as shown below.



Revision Date
8/12/2022

N.A.D. 1983 Coordinates
(1996 Adjustment)

County Project Coordinates	
Northing	193620.5910
Easting	563609.4312
Date	6/18/03

I hereby certify that this United States public land survey monument record is correct and complete to the best of my knowledge and belief.

David Zieglmeier Date 12/7/23

David Zieglmeier Anoka County Surveyor
Minnesota License Number 46179

HISTORY OF GOVERNMENT CORNER

Page No. 26

County of Anoka

State of Minnesota

Witness Corner of Sec. 1 Township 32 Range 22
(on east line of NE 1/4)

CORNER HISTORY:

August 3, 1964 - Found 1 1/2" iron pipe up 0.2'± using Don Hult ties. Updated ties.

June 25, 1970 - Found 1 1/2" iron pipe missing. Set 1/2" iron pipe down 0.1'± using corner ties. Updated ties.

June 6, 1973 - Found 1/2" iron pipe and updated ties.

August 6, 1976 - Found 1/2" iron pipe and updated ties.

July 30, 1979 - Found 1/2" iron pipe and updated ties.

August 2, 1985 - Found 1/2" iron pipe and updated ties.

August 18, 1989 - Found 1/2" iron pipe and updated ties.

August 10, 1995 - Found 1/2" iron pipe and updated ties.

June 18, 2003 - Established NAD 1983 (1996 adj.) Anoka County project coordinates by static GPS methods.

December 26, 2007 - Found 1/2" iron pipe and updated ties.

September 23, 2014 - Found 1/2" iron pipe and placed a "Anoka County" cap in the iron pipe. Verified position by VRS GPS methods. Updated ties.

August 2, 2019 - Found 1/2" iron pipe with "Anoka County" cap. Verified position by VRS GPS methods. Updated ties.

May 26, 2022 - Found 1/2" iron pipe with "Anoka County" cap. Verified position by VRS GPS methods. Updated ties.