

CERTIFICATE OF LOCATION OF GOVERNMENT CORNER

County of Anoka

State of Minnesota

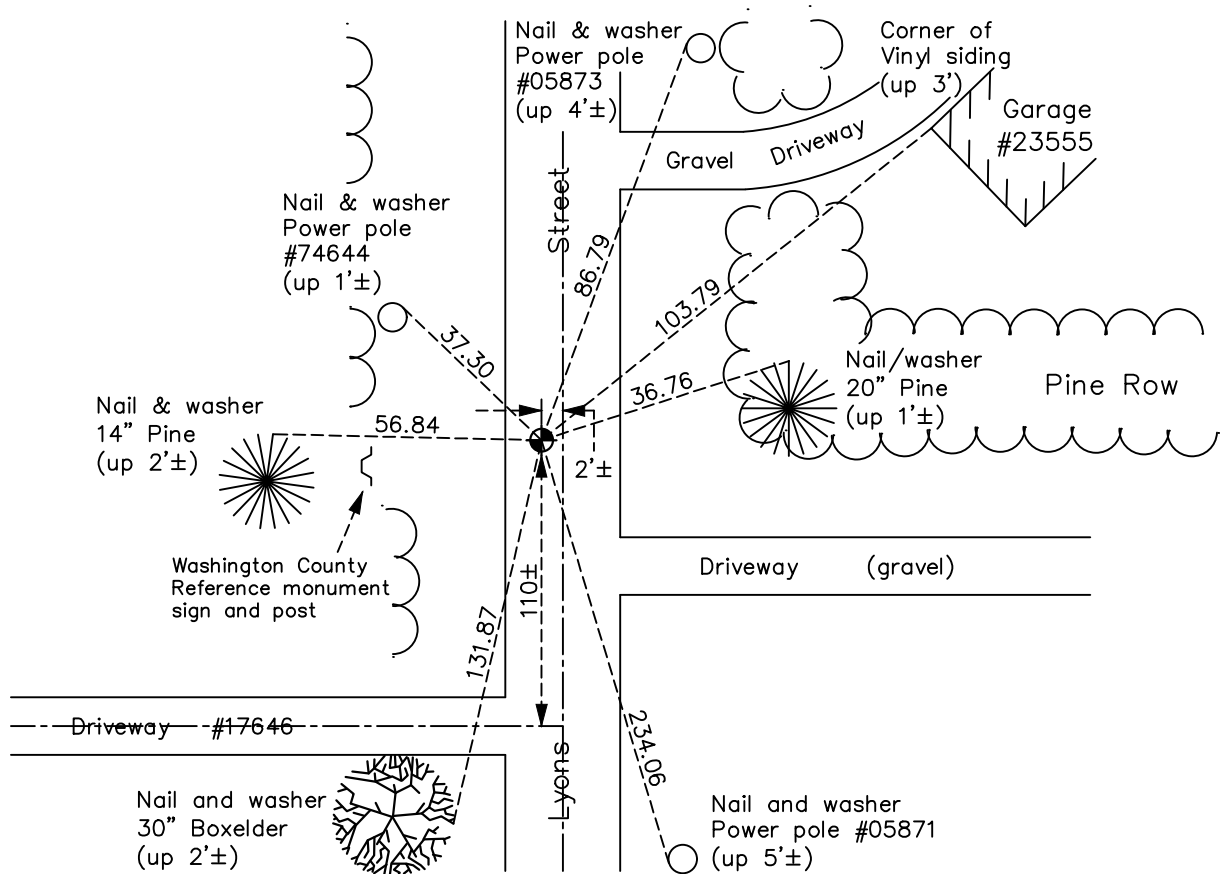
East 1/4 Corner of Sec. 1 Township 32 Range 22

On the 6th day of December, 1963, the described corner was evidenced by a 1-1/4" iron pipe

and to perpetuate the location of said corner, at the exact location thereof, a permanent marker was placed consisting of a cast iron monument

AND on the 26th day of May, 2022, said permanent marker was found flush and the ties were updated

Updated reference ties are as shown below.



Revision Date
8/12/2022

N.A.D. 1983 Coordinates
 (1996 Adjustment)

County Project Coordinates	
Northing	<u>192958.8888</u>
Easting	<u>563612.4896</u>
Date	<u>6/18/03</u>

I hereby certify that this United States public land survey monument record is correct and complete to the best of my knowledge and belief.

David Zieglmeier Date 12/7/23

David Zieglmeier Anoka County Surveyor
 Minnesota License Number 46179

HISTORY OF GOVERNMENT CORNER

Page No. 27

County of Anoka

State of Minnesota

East 1/4 Corner of Sec. 1 Township 32 Range 22

CORNER HISTORY:

December 6, 1963 - Found 1 1/4" iron pipe down 0.1' using Don Hult ties. Updated ties.

September 22, 1969 - Washington County placed a cast iron monument down 0.4'±.

August 6, 1976 - Found cast iron monument down 0.4'± and updated ties.

July 30, 1979 - Found cast iron monument and updated ties.

August 2, 1985 - Found cast iron monument and updated ties.

August 1, 1986 - Found cast iron monument down and raised. Updated ties.

February 10, 1988 - Found cast iron monument and updated ties.

August 18, 1989 - Found cast iron monument and updated ties.

August 10, 1995 - Found cast iron monument and updated ties.

June 18, 2003 - Established NAD 1983 (1996 adj.) Anoka County project coordinates by static GPS methods.

December 26, 2007 - Found cast iron monument and updated ties.

September 17, 2014 - Found cast iron monument. Verified position by VRS GPS methods. Updated ties.

August 2, 2019 - Found cast iron monument. Verified position by VRS GPS methods. Updated ties.

May 26, 2022 - Found cast iron monument. Verified position by VRS GPS methods. Updated ties.