

CERTIFICATE OF LOCATION OF GOVERNMENT CORNER

County of Anoka

State of Minnesota

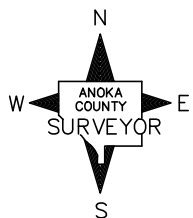
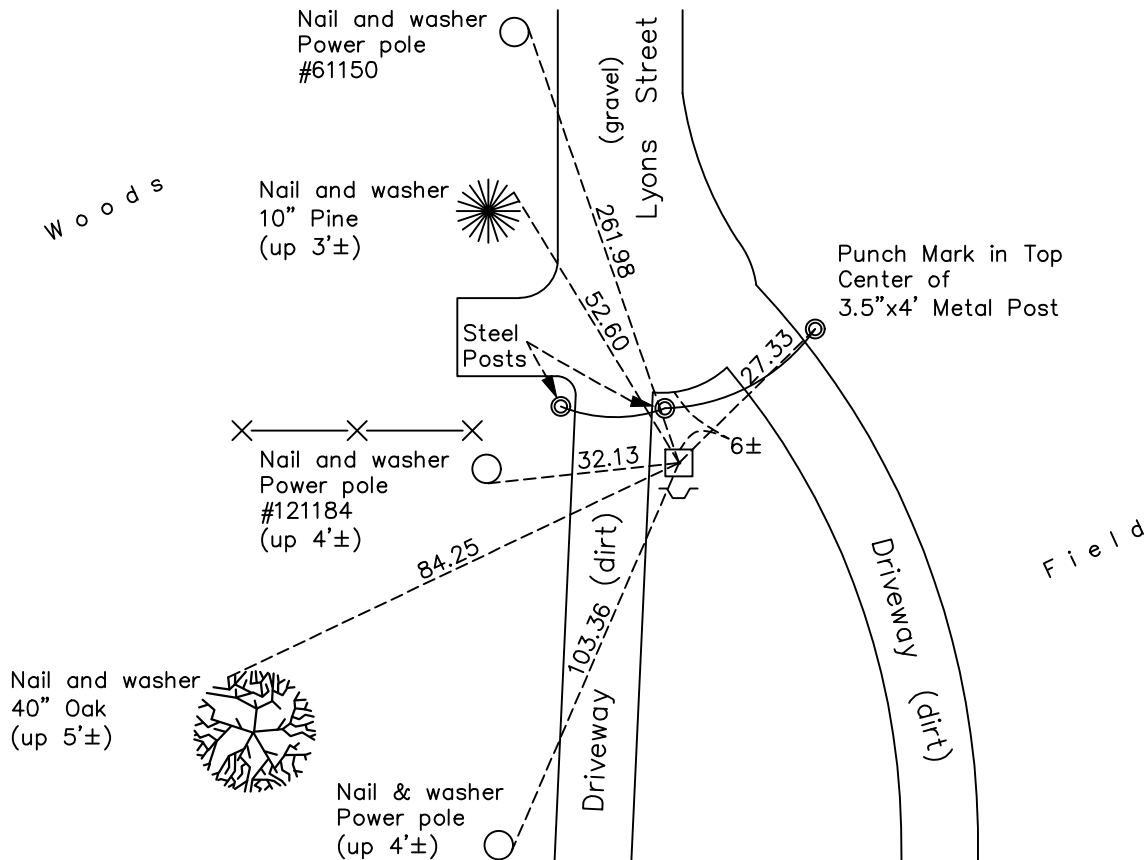
Northeast Corner of Sec. 12 Township 32 Range 22

On the 25th day of July, 1960, the described corner was evidenced by a sandstone monument

and to perpetuate the location of said corner, at the exact location thereof, a permanent marker was placed consisting of the same sandstone monument with a sign and post on the south side

AND on the 26th day of May, 2022, said permanent marker was found down 1.5'± with a sign and post 0.5'± south. The ties were updated.

Updated reference ties are as shown below.



Revision Date

8/12/2022

N.A.D. 1983 Coordinates
(1996 Adjustment)

County Project Coordinates	
Northing	<u>190363.6086</u>
Easting	<u>563625.5767</u>
Date	<u>6/18/03</u>

I hereby certify that this United States public land survey monument record is correct and complete to the best of my knowledge and belief.

David Zieglmeier Date 12/7/23

David Zieglmeier Anoka County Surveyor
Minnesota License Number 46179

HISTORY OF GOVERNMENT CORNER

Page No. 28

County of Anoka

State of Minnesota

Northeast Corner of Sec. 12 Township 32 Range 22

CORNER HISTORY:

July 25, 1960 - Found 6" x 6" sandstone monument down 0.5'± with a drill hole in top. Updated ties.

September 18, 1964 - Found sandstone monument and updated ties.

July 6, 1970 - Found sandstone monument and updated ties.

June 6, 1973 - Found sandstone monument and updated ties.

August 6, 1976 - Found sandstone monument and updated ties.

July 30, 1979 - Found sandstone monument and updated ties.

August 2, 1985 - Found sandstone monument and updated ties.

February 10, 1988 - Found sandstone monument and updated ties.

August 18, 1989 - Found sandstone monument and updated ties.

August 10, 1995 - Found sandstone monument and updated ties.

June 18, 2003 - Established NAD 1983 (1996 adj.) Anoka County project coordinates by static GPS methods.

January 4, 2008 - Found sandstone monument down 1'± and updated ties.

September 23, 2014 - Found sandstone monument down 1'± and updated ties.

August 2, 2019 - Found sandstone monument down 1'± and updated ties.

May 26, 2022 - Found sandstone monument down 1.5'±, verified position by GPS VRS method, updated ties.