

CERTIFICATE OF LOCATION OF GOVERNMENT CORNER

County of Anoka

State of Minnesota

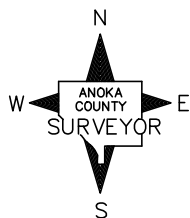
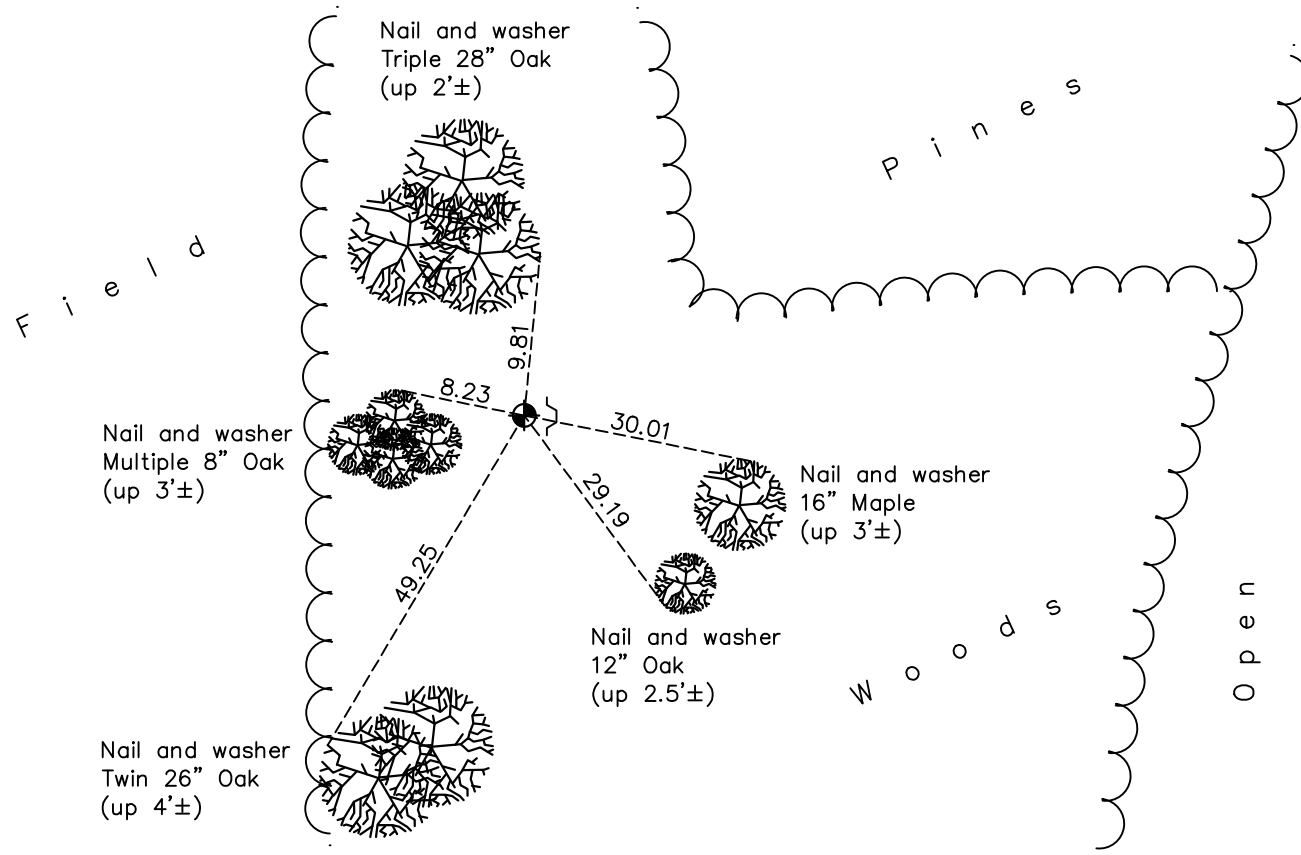
Southwest Corner of Sec. 1 Township 32 Range 22

On the 27th day of December, 1968, the described corner was evidenced by a 3/4" iron pipe

and to perpetuate the location of said corner, at the exact location thereof, a permanent marker was placed consisting of a cast iron monument with a sign and post on the east side

AND on the 31st day of May, 2022, said permanent marker was found flush and the ties were updated.

Updated reference ties are as shown below.



N.A.D. 1983 Coordinates
(1996 Adjustment)

County Project Coordinates	
Northing	<u>190403.1786</u>
Easting	<u>558390.5046</u>
Date	<u>4/18/05</u>

I hereby certify that this United States public land survey monument record is correct and complete to the best of my knowledge and belief.

David Zieglmeier Date 12/7/23

David Zieglmeier Anoka County Surveyor
Minnesota License Number 46179

Revision Date

8/12/2022

HISTORY OF GOVERNMENT CORNER

Page No. 30

County of Anoka

State of Minnesota

Southwest Corner of Sec. 1 Township 32 Range 22

CORNER HISTORY:

December 27, 1968 - Found 3/4" iron pipe and updated ties.

June 11, 1973 - Found 3/4" iron pipe and updated ties.

August 6, 1976 - Found 3/4" iron pipe and updated ties.

July 31, 1979 - Found 3/4" iron pipe and updated ties.

June 14, 1990 - Found 3/4" iron pipe and updated ties.

August 5, 1986 - Found 3/4" iron pipe and updated ties.

February 10, 1988 - Found 3/4" iron pipe and updated ties.

June 14, 1990 - Found 3/4" iron pipe and updated ties.

August 16, 1995 - Found cast iron monument with a sign and post on the North side. Updated ties.

April 18, 2005 - Found cast iron monument. Updated ties. Established NAD 1983 (1996 adj.) Anoka County project coordinates by static GPS methods.

October 9, 2014 - Found cast iron monument and updated ties. Found sign and post on North side missing. Set sign and post on the East side.

September 26, 2019 - Found cast iron monument and updated ties.

May 31, 2022 - Found cast iron monument flush, verified position by VRS GPS method and updated ties.