

# CERTIFICATE OF LOCATION OF GOVERNMENT CORNER

County of Anoka

State of Minnesota

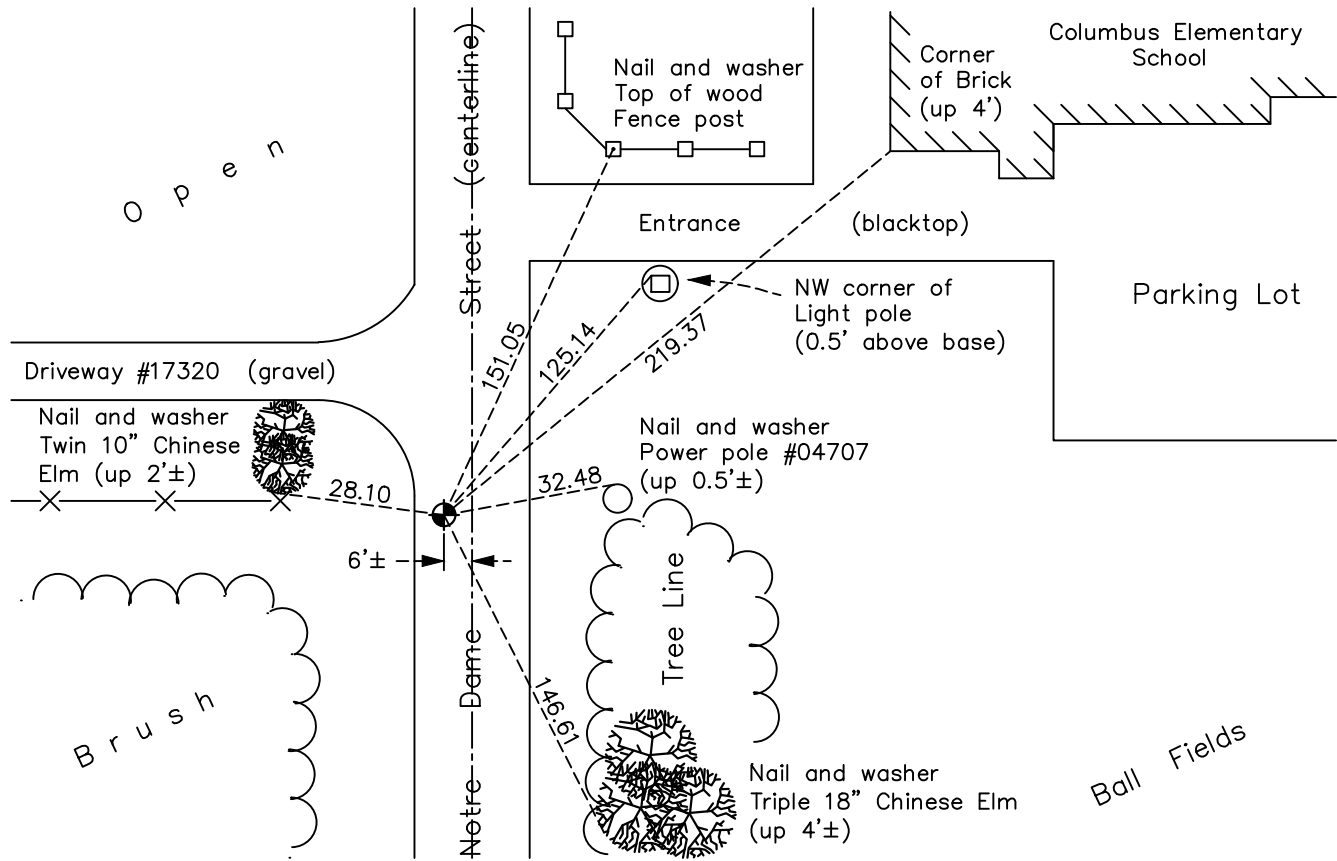
## North 1/4 Corner of Sec. 11 Township 32 Range 22

On the 25th day of April, 1978, the described corner was evidenced by area resurvey

and to perpetuate the location of said corner, at the exact location thereof, a permanent marker was placed consisting of a cast iron monument

AND on the 31st day of May, 2022, said permanent marker was found flush and the ties were updated.

Updated reference ties are as shown below.



N.A.D. 1983 Coordinates  
(1996 Adjustment)

County Project Coordinates	
Northing	<u>190413.6608</u>
Easting	<u>555763.3936</u>
Date	<u>6/17/03</u>

I hereby certify that this United States public land survey monument record is correct and complete to the best of my knowledge and belief.

David Zieglmeier Date 12/7/23

David Zieglmeier Anoka County Surveyor  
Minnesota License Number 46179

Revision Date

8/12/2022

# HISTORY OF GOVERNMENT CORNER

Page No. 31

County of Anoka

State of Minnesota

North 1/4 Corner of Sec. 11 Township 32 Range 22

## **CORNER HISTORY:**

April 25, 1978 - Found iron pipe set by Don Hult and replaced with a cast iron monument after area resurvey. Established ties to cast iron monument.

August 9, 1985 - Found cast iron monument and updated ties.

April 28, 1989 - Found cast iron monument and updated ties.

August 16, 1989 - Found cast iron monument and updated ties.

August 15, 1995 - Found cast iron monument and updated ties.

June 17, 2003 - Established NAD 1983 (1996 adj.) Anoka County project coordinates by static GPS methods.

December 11, 2007 - Found cast iron monument and updated ties.

October 9, 2014 - Found cast iron monument. Verified position by VRS GPS methods. Updated ties.

May 20, 2015 - Found cast iron monument. Set construction ties, updated corner ties and verified position by VRS GPS methods prior to road construction. Removed monument.

July 16, 2015 - Set cast iron monument flush after road construction using static GPS methods. Verified position by VRS GPS methods. Updated ties.

August 2, 2019 - Found cast iron monument flush. Verified position by VRS GPS methods. Updated ties.

May 31, 2022 - Found cast iron monument flush. Verified position by VRS GPS methods. Updated ties.