

CERTIFICATE OF LOCATION OF GOVERNMENT CORNER

County of Anoka

State of Minnesota

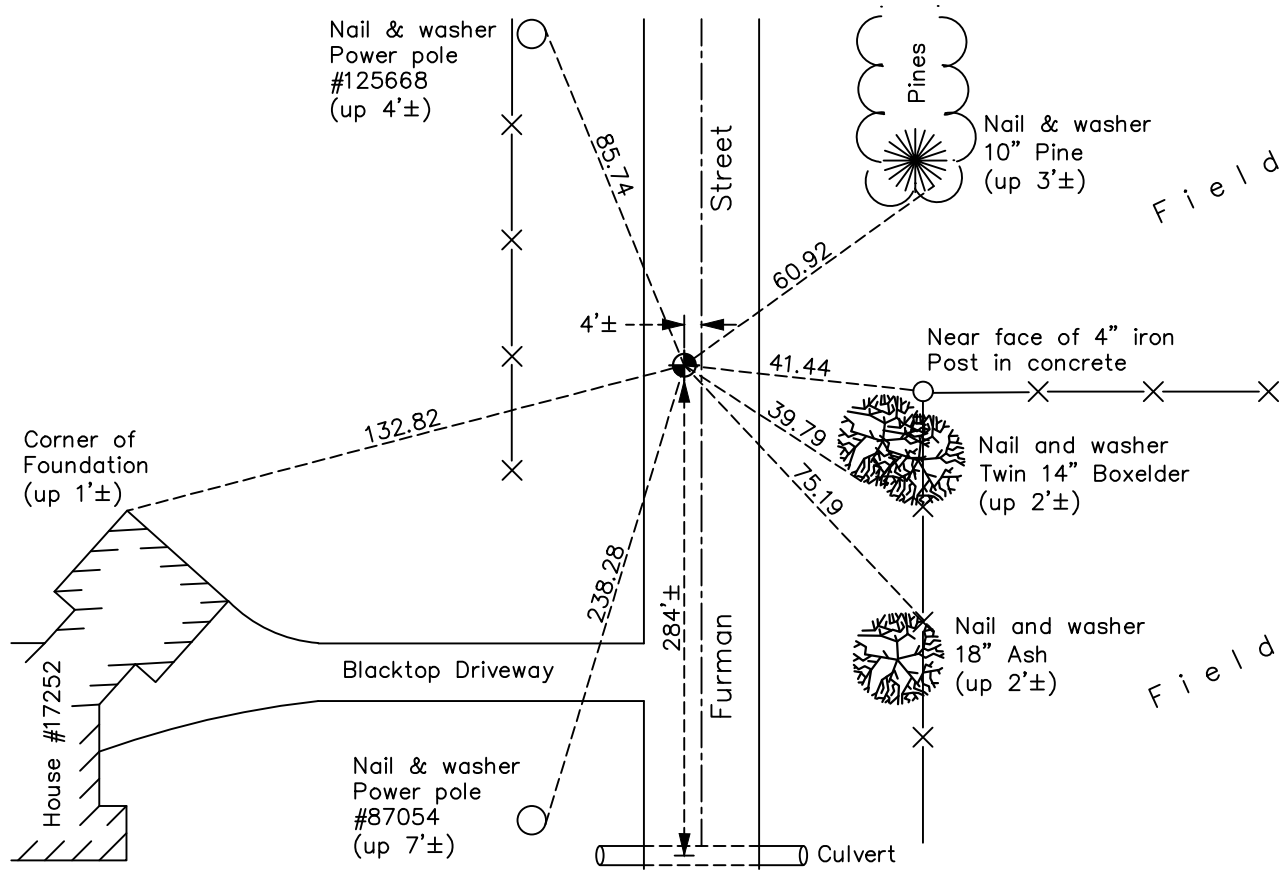
Southwest Corner of Sec. 2 Township 32 Range 22

On the ____ day of April, 1968, the described corner was evidenced by a railroad spike found by Jim Kurth

and to perpetuate the location of said corner, at the exact location thereof, a permanent marker was placed consisting of a cast iron monument

AND on the 31st day of May, 2022, said permanent marker was found flush and the ties were updated.

Updated reference ties are as shown below.



Revision Date
8/12/2022

N.A.D. 1983 Coordinates
 (1996 Adjustment)

County Project Coordinates	
Northing	<u>190424.1537</u>
Easting	<u>553124.8869</u>
Date	<u>6/17/03</u>

I hereby certify that this United States public land survey monument record is correct and complete to the best of my knowledge and belief.

David Zieglmeier Date 12/8/23

David Zieglmeier Anoka County Surveyor
 Minnesota License Number 46179

HISTORY OF GOVERNMENT CORNER

Page No. 32

County of Anoka

State of Minnesota

Southwest Corner of Sec. 2 Township 32 Range 22

CORNER HISTORY:

April 1968 - Jim Kurth found a railroad spike down 0.4'± and updated ties.

September 23, 1969 - Found railroad spike and replaced with a cast iron monument down 0.5'±. Updated ties.

June 5, 1973 - Found cast iron monument and updated ties.

August 8, 1976 - Found cast iron monument and updated ties.

July 31, 1979 - Found cast iron monument and updated ties.

August 9, 1985 - Found cast iron monument and updated ties.

February 10, 1988 - Found cast iron monument and updated ties.

August 15, 1989 - Found cast iron monument and updated ties.

August 15, 1995 - Found cast iron monument and updated ties.

June 17, 2003 - Established NAD 1983 (1996 adj.) Anoka County project coordinates by static GPS methods.

August 17, 2004 - Found cast iron monument down 1'± and updated ties.

September 16, 2014 - Found cast iron monument down 1'± and updated ties.

August 5, 2019 - Found road paved and cast iron monument under blacktop.

August 16, 2019 - Set 1' long cast iron monument flush with road on top of solid cast iron monument down 1'. Verified position by VRS GPS methods. Updated ties.

May 31, 2022 - Found cast iron monument flush, verified position by VRS GPS method and updated ties.