

# CERTIFICATE OF LOCATION OF GOVERNMENT CORNER

County of Anoka

State of Minnesota

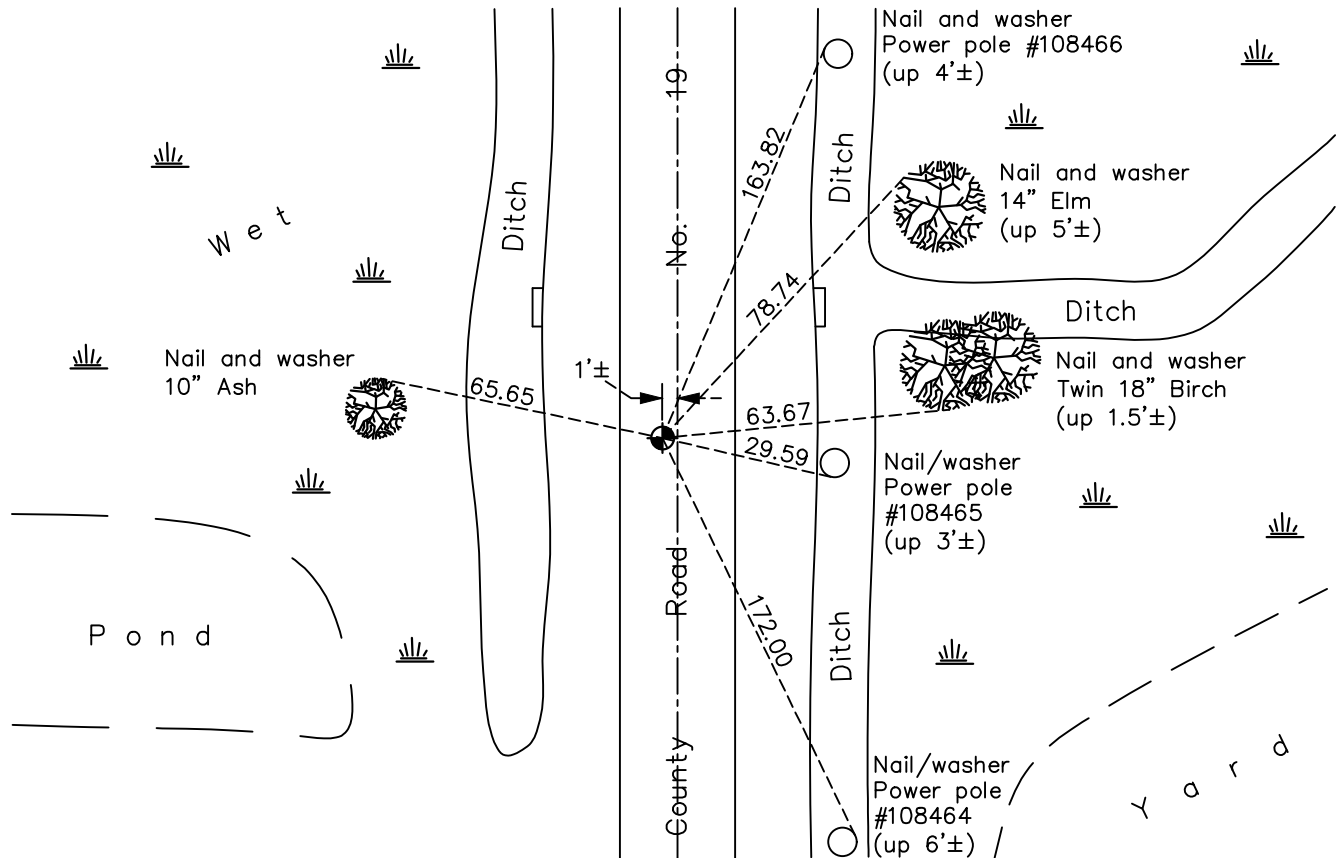
## Northwest Corner of Sec. 10 Township 32 Range 22

On the 5th day of April, 1978, the described corner was evidenced by an iron pipe

and to perpetuate the location of said corner, at the exact location thereof, a permanent marker was placed consisting of a cast iron monument

AND on the 31st day of May, 2022, said permanent marker was found flush and the ties were updated.

Updated reference ties are as shown below.



Revision Date  
8/12/2022

N.A.D. 1983 Coordinates  
(1996 Adjustment)

County Project Coordinates	
Northing	<u>190460.4077</u>
Easting	<u>547921.6560</u>
Date	<u>6/23/03</u>

I hereby certify that this United States public land survey monument record is correct and complete to the best of my knowledge and belief.

*David Zieglmeier* Date 12/8/23

David Zieglmeier Anoka County Surveyor  
Minnesota License Number 46179

# HISTORY OF GOVERNMENT CORNER

Page No. 34

County of Anoka

State of Minnesota

## Northwest Corner of Sec. 10 Township 32 Range 22

### **CORNER HISTORY:**

April 5, 1978 - Set cast iron monument flush at found iron pipe location. Established ties to monument.

August 9, 1989 - Found cast iron monument and updated ties.

August 14, 1995 - Found cast iron monument and updated ties.

May 28, 1997 - Found cast iron monument, set construction ties and updated corner ties prior to road construction. Removed monument.

August 26, 1997 - Set cast iron monument after road construction. Updated ties.

June 23, 2003 - Established NAD 1983 (1996 adj.) Anoka County project coordinates by static GPS methods.

August 9, 2004 - Found cast iron monument and updated ties.

December 19, 2007 - Found cast iron monument and updated ties.

July 12, 2012 - Found cast iron monument missing. Set temporary p.k. nail.

September 13, 2012 - Set 3/4 partial cast iron monument flush using static GPS methods. Updated ties.

September 19, 2014 - Found cast iron monument. Verified position by VRS GPS methods. Updated ties.

August 5, 2019 - Found cast iron monument. Verified position by VRS GPS methods. Updated ties.

May 31, 2022 - Found cast iron monument. Verified position by VRS GPS methods. Updated ties.