

CERTIFICATE OF LOCATION OF GOVERNMENT CORNER

County of Anoka

State of Minnesota

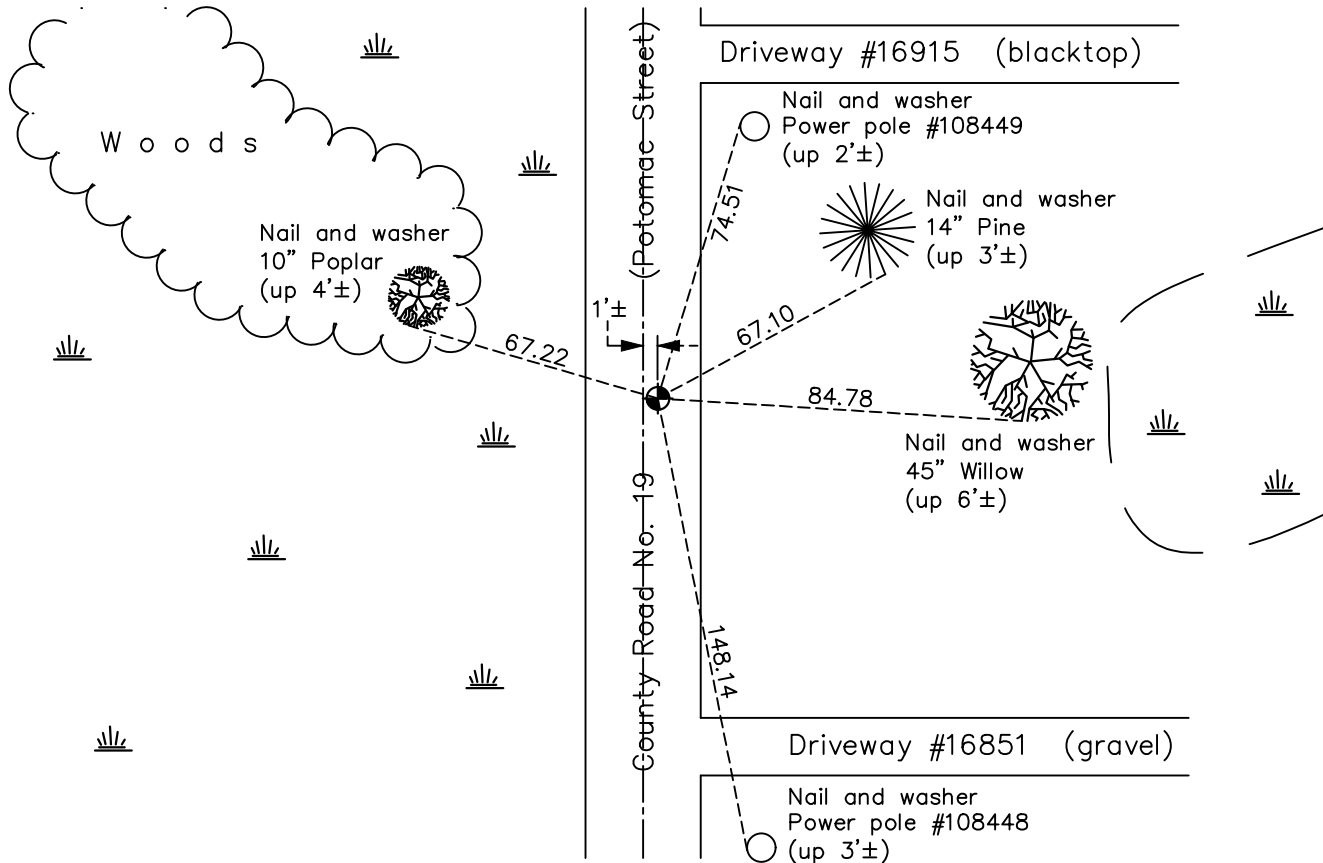
East 1/4 Corner of Sec. 9 Township 32 Range 22

On the 18th day of September, 1964, the described corner was evidenced by a 1/2" iron pipe

and to perpetuate the location of said corner, at the exact location thereof, a permanent marker was placed consisting of a cast iron monument

AND on the 31st day of May, 2022, said permanent marker was found flush and the ties were updated

Updated reference ties are as shown below.



Revision Date
8/12/2022

N.A.D. 1983 Coordinates
(1996 Adjustment)

County Project Coordinates	
Northing	<u>187836.1133</u>
Easting	<u>547954.7386</u>
Date	<u>6/23/03</u>

I hereby certify that this United States public land survey monument record is correct and complete to the best of my knowledge and belief.

David Zieglmeier Date 12/8/23

David Zieglmeier Anoka County Surveyor
Minnesota License Number 46179

HISTORY OF GOVERNMENT CORNER

Page No. 42

County of Anoka

State of Minnesota

East 1/4 Corner of Sec. 9 Township 32 Range 22

CORNER HISTORY:

Unknown date - R.M. Knudson found a 3/4" iron pipe and updated ties.

September 18, 1964 - Found 1/2" iron pipe down 0.2'± and updated ties.

September 8, 1969 - Found 1/2" iron pipe down 1.5'± directly under another iron pipe and replaced with a cast iron monument flush. Updated ties.

June 5, 1973 - Found cast iron monument and updated ties.

August 5, 1976 - Found cast iron monument and updated ties.

August 3, 1979 - Found cast iron monument and updated ties.

August 9, 1989 - Found cast iron monument and updated ties.

August 14, 1995 - Found cast iron monument and updated ties.

June 18, 1997 - Found cast iron monument and set construction ties prior to road construction.

August 26, 1997 - Set cast iron monument after road construction. Updated ties..

June 23, 2003 - Established NAD 1983 (1996 adj.) Anoka County project coordinates by static GPS methods.

November 14, 2007 - Found cast iron monument and updated ties.

September 26, 2014 - Found cast iron monument. Verified position by VRS GPS methods. Updated ties.

August 6, 2019 - Found cast iron monument. Verified position by VRS GPS methods. Updated ties.

May 31, 2022 - Found cast iron monument flush. Verified position by VRS GPS methods. Updated ties.