

CERTIFICATE OF LOCATION OF GOVERNMENT CORNER

County of Anoka

State of Minnesota

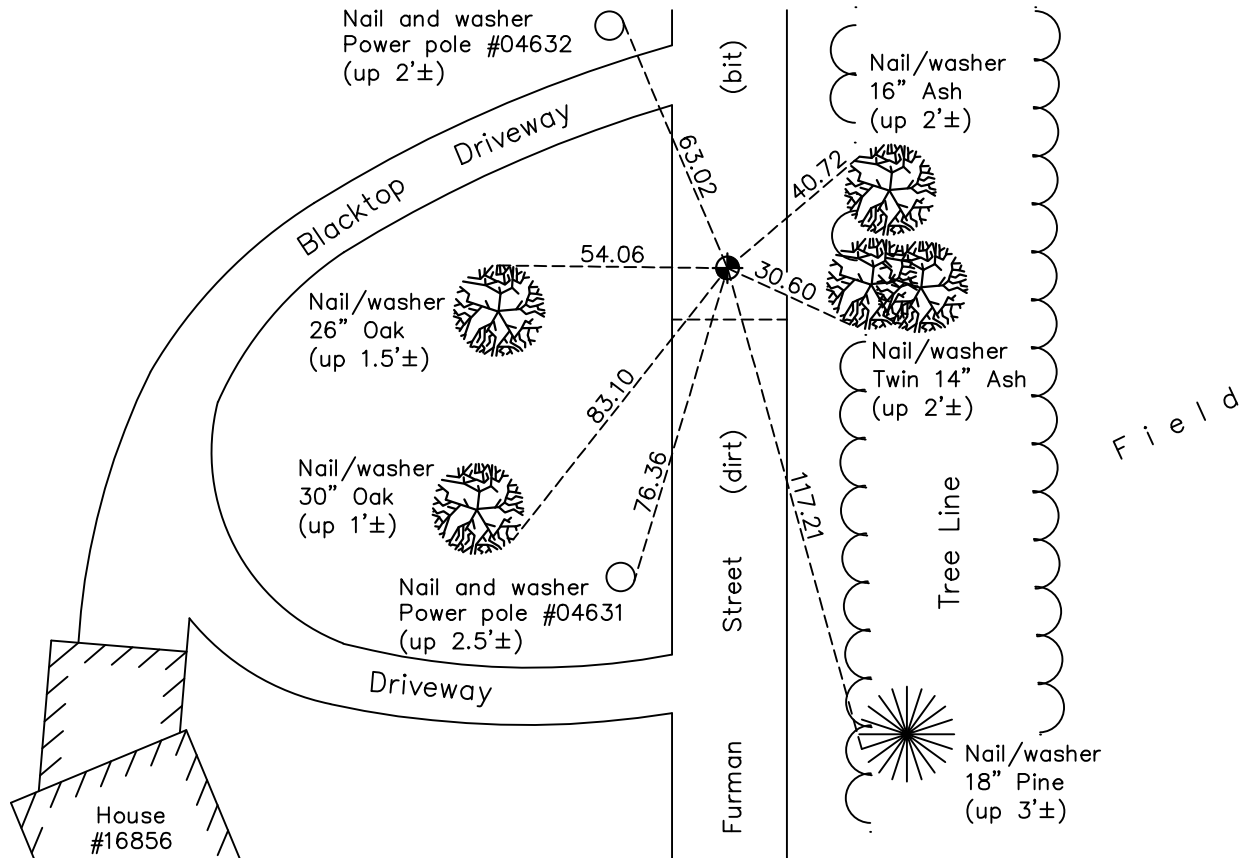
East 1/4 Corner of Sec. 10 Township 32 Range 22

On the 5th day of April, 1978, the described corner was evidenced by an iron pipe

and to perpetuate the location of said corner, at the exact location thereof, a permanent marker was placed consisting of a cast iron monument

AND on the 9th day of June, 2022, said permanent marker was found down 1.5'±, set new CIM on top of existing, set flush to new bituminous surface using ties. Updated ties after setting.

Updated reference ties are as shown below.



Revision Date
8/12/2022

N.A.D. 1983 Coordinates
 (1996 Adjustment)

County Project Coordinates	
Northing	<u>187808.0381</u>
Easting	<u>553153.9637</u>
Date	<u>6/18/03</u>

I hereby certify that this United States public land survey monument record is correct and complete to the best of my knowledge and belief.

David Zieglmeier Date 12/8/23

David Zieglmeier Anoka County Surveyor
 Minnesota License Number 46179

HISTORY OF GOVERNMENT CORNER

Page No. 43

County of Anoka

State of Minnesota

East 1/4 Corner of Sec. 10 Township 32 Range 22

CORNER HISTORY:

April 5, 1978 - Found iron pipe after area resurvey and replaced with a cast iron monument down 0.5'±.
Updated ties.

August 9, 1985 - Found cast iron monument and updated ties.

August 14, 1989 - Found cast iron monument and updated ties.

August 15, 1995 - Found cast iron monument and updated ties.

June 18, 2003 - Established NAD 1983 (1996 adj.) Anoka County project coordinates by static GPS methods.

August 17, 2004 - Found cast iron monument and updated ties.

August 17, 2007 - Found cast iron monument and updated ties.

September 16, 2014 - Found cast iron monument down 1.5'± and updated ties.

August 5, 2019 - Found cast iron monument down 1.5'±. Verified position by VRS GPS methods. Updated ties.

June 9th, 2022 - Found cast iron monument down 1.5'±. Set new cast iron monument on top of existing monument, set flush to new road bituminous surface, using ties. Verified position using GPS VRS method and updated ties after setting.