

CERTIFICATE OF LOCATION OF GOVERNMENT CORNER

County of Anoka

State of Minnesota

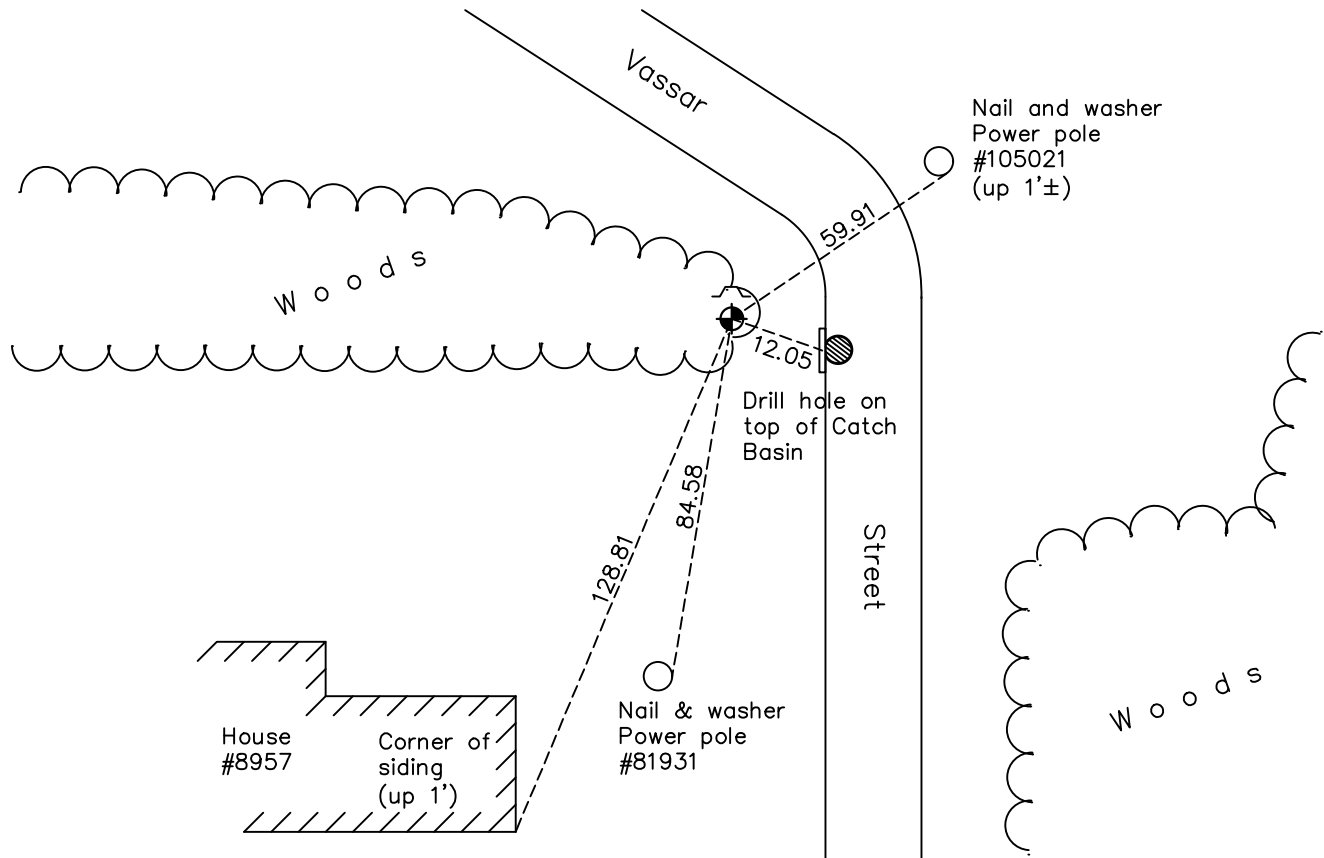
West 1/4 Corner of Sec. 12 Township 32 Range 22

On the 6th day of June, 1969, the described corner was evidenced by area resurvey

and to perpetuate the location of said corner, at the exact location thereof, a permanent marker was placed consisting of cast iron monument

AND on the 27th day of January, 2023, said permanent marker was found down 0.5'± with a sign/post 1.5'± to the North. Coordinates were verified using County RTK GPS method

Updated reference ties are as shown below.



Revision Date

1/30/2023

N.A.D. 1983 Coordinates
(1996 Adjustment)

County Project Coordinates	
Northing	187769.7574
Easting	558385.2710
Date	6/25/03

I hereby certify that this United States public land survey monument record is correct and complete to the best of my knowledge and belief.

David Zieglmeier Date 2/28/23

David Zieglmeier Anoka County Surveyor

Minnesota License Number 46179

HISTORY OF GOVERNMENT CORNER

Page No. 44

County of Anoka

State of Minnesota

West 1/4 Corner of Sec. 12 Township 32 Range 22

CORNER HISTORY:

June 6, 1969 - Found 1-1/2" iron pipe up 10"± set by Don Hult. Used in area resurvey. Updated ties.

June 11, 1973 - Found 1-1/2" iron pipe and updated ties.

August 6, 1976 - Found 1-1/2" iron pipe and updated ties.

August 6, 1979 - Found 1-1/2" iron pipe and updated ties.

July 13, 1982 - Found 1-1/2" iron pipe and updated ties.

August 13, 1985 - Found 1-1/2" iron pipe and updated ties.

May 30, 1986 - Found 1-1/2" iron pipe and updated ties.

August 29, 1989 - Found 1-1/2" iron pipe and updated ties.

April 19, 1990 - Found cast iron monument and updated ties.

August 16, 1995 - Found cast iron monument and updated ties.

June 25, 2003 - Established NAD 1983 (1996 adj.) Anoka County project coordinates by static GPS methods.

March 4, 2008 - Found cast iron monument down 1'± and updated ties.

September 23, 2014 - Found cast iron monument down 1'± and updated ties.

August 7, 2019 - Found cast iron monument down 1'± and updated ties.

June 7th, 2022 - Found cast iron monument down 0.5'±. Verified position by GPS VRS method. Updated ties.

January 27, 2023 - Found cast iron monument down 0.5'±, position verified by County RTK GPS method and the ties were reviewed.