

CERTIFICATE OF LOCATION OF GOVERNMENT CORNER

County of Anoka

State of Minnesota

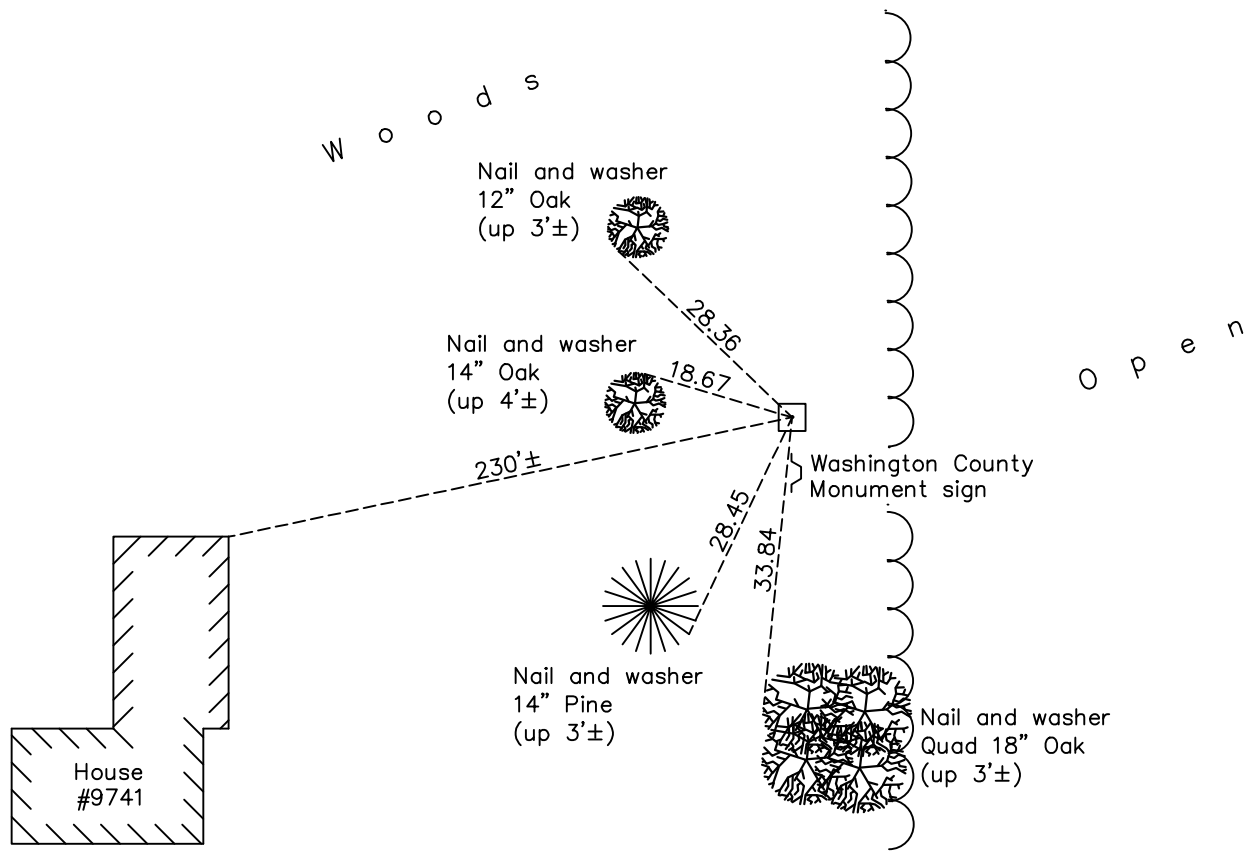
East 1/4 Corner of Sec. 12 Township 32 Range 22

On the 27th day of July, 1960, the described corner was evidenced by a sandstone monument

and to perpetuate the location of said corner, at the exact location thereof, a permanent marker was placed consisting of the same sandstone monument

AND on the 8th day of June, 2022, said permanent marker was found up 0.2'± and the ties were updated

Updated reference ties are as shown below.



Revision Date
8/12/2022

N.A.D. 1983 Coordinates
 (1996 Adjustment)

County Project Coordinates	
Northing	<u>187730.0753</u>
Easting	<u>563626.5223</u>
Date	<u>1/17/06</u>

I hereby certify that this United States public land survey monument record is correct and complete to the best of my knowledge and belief.

David Zieglmeier Date 12/8/23

David Zieglmeier Anoka County Surveyor
 Minnesota License Number 46179

HISTORY OF GOVERNMENT CORNER

Page No. 45

County of Anoka

State of Minnesota

East 1/4 Corner of Sec. 12 Township 32 Range 22

CORNER HISTORY:

July 27, 1960 - Found 6" x 6" stone (sandstone) monument up 3" with a drill hole in the top center. Updated ties.

September 18, 1964 - Found 6" x 6" stone monument and updated ties.

July 14, 1970 - Found 6" x 6" stone monument and updated ties.

June 6, 1973 - Found 6" x 6" stone monument and updated ties.

August 8, 1976 - Found 6" x 6" stone monument and updated ties.

August 6, 1979 - Found 6" x 6" stone monument and updated ties.

August 15, 1985 - Found 6" x 6" stone monument and updated ties.

April 28, 1989 - Found 6" x 6" stone monument and updated ties.

August 16, 1995 - Found 6" x 6" stone monument and updated ties.

January 17, 2006 - Established NAD 1983 (1996 adj.) Anoka County project coordinates by static GPS methods.

April 21, 2008 - Found 6" x 6" stone monument and updated ties.

September 23, 2014 - Found 6" x 6" stone monument up 0.2'± and updated ties.

August 7, 2019 - Found 6" x 6" stone monument up 0.2'± and updated ties.

June 8, 2022 - Found 6" x 6" stone monument up 0.2'±. Verified position by VRS GPS method. Updated ties.