

CERTIFICATE OF LOCATION OF GOVERNMENT CORNER

County of Anoka

State of Minnesota

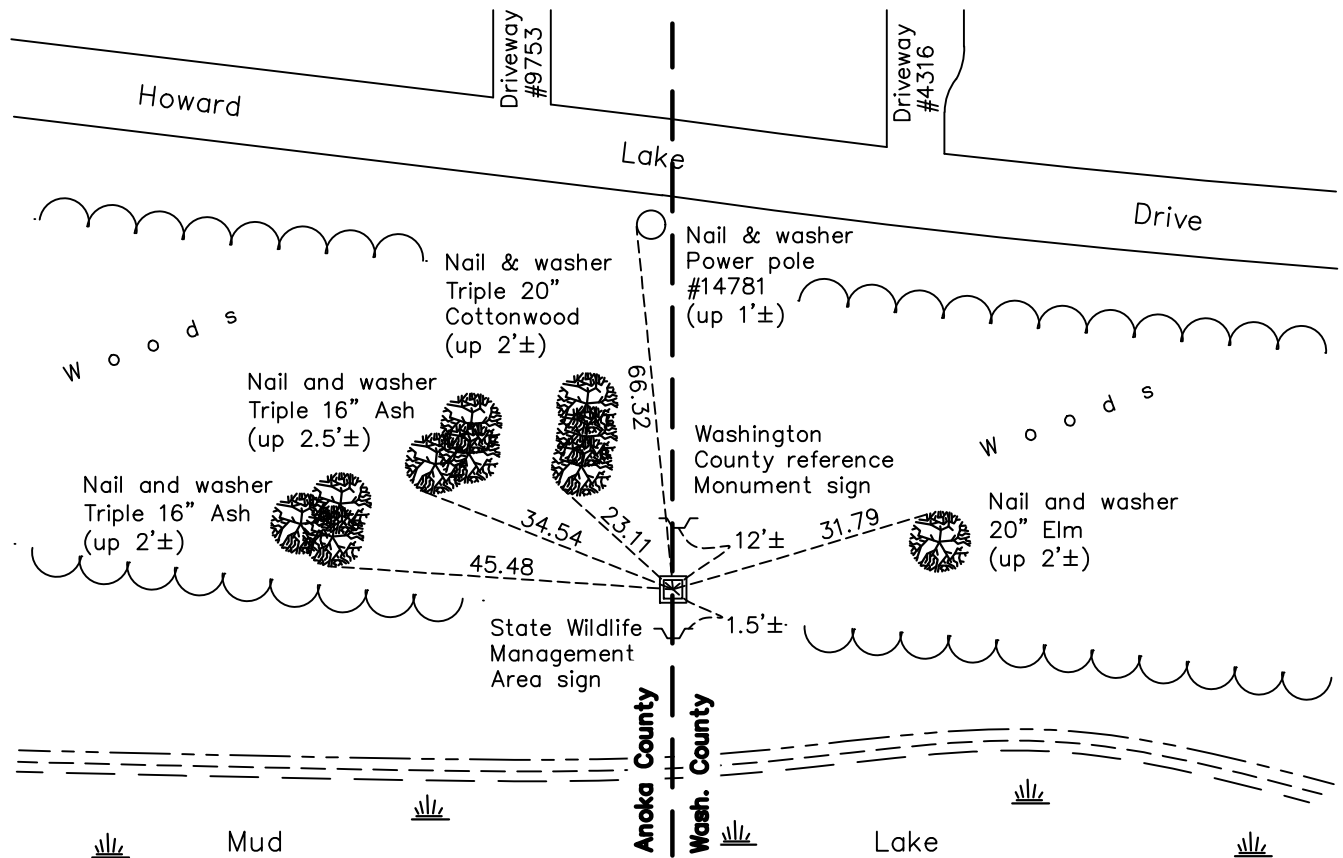
Southeast Corner of Sec. 12 Township 32 Range 22

On the 27th day of May, 2022, the described corner was evidenced by a Washington cast iron monument. Found up 0.5'± leaning northerly.

and to perpetuate the location of said corner, at the exact location thereof, a permanent marker was placed consisting of a 2" square steel Telspar with cap and punchmark up 1'± set back to historical position.

AND on the 3rd day of March, 2023, said permanent marker was Reset with 2" square steel Telspar monument w/cap up 1'. Verified position by RTK GPS. Updated ties.

Updated reference ties are as shown below.



N.A.D. 1983 Coordinates
(1996 Adjustment)

County Project Coordinates	
Northing	185097.6006
Easting	563624.7681
Date	7/01/03

I hereby certify that this United States public land survey monument record is correct and complete to the best of my knowledge and belief.

David Zieglmeier Date 3/15/23

David Zieglmeier Anoka County Surveyor
Minnesota License Number 46179

Revision Date

3/10/2023

HISTORY OF GOVERNMENT CORNER

Page No. 46

County of Anoka

State of Minnesota

Southeast Corner of Sec. 12 Township 32 Range 22

CORNER HISTORY:

August 3, 1964 - Found 5-1/2" x 4-1/2" sandstone monument with a drill hole in top using Don Hult ties. Straightened monument and Updated ties.

June 13, 1973 - Found Washington County cast iron monument and updated ties.

August 8, 1976 - Found Washington County cast iron monument and updated ties.

August 1, 1979 - Found Washington County cast iron monument and updated ties.

July 20, 1982 - Found Washington County cast iron monument and updated ties.

August 13, 1985 - Found Washington County cast iron monument and updated ties.

August 29, 1989 - Found Washington County cast iron monument and updated ties.

July 1, 2003 - Established NAD 1983 (1996 adj.) Anoka County project coordinates by static GPS methods.

March 4, 2008 - Found Washington County cast iron monument slightly leaning South. Updated ties.

September 23, 2014 - Found Washington County cast iron monument up 0.5'± and updated ties.

August 7, 2019 - Found Washington County cast iron monument up 0.5'± and slightly leaning SW. Updated ties.

May 27, 2022 - Found Washington County cast iron monument up 0.5'± and slightly leaning Northerly. Verified position by VRS GPS method. Updated ties.

March 3, 2023 - Found Washington County CIM up 0.5 feet leaning badly. Removed monument and replaced with a 2" Telespar with cap and punchmark to historical position. Verified position by RTK GPS method. Updated ties.