

CERTIFICATE OF LOCATION OF GOVERNMENT CORNER

County of Anoka

State of Minnesota

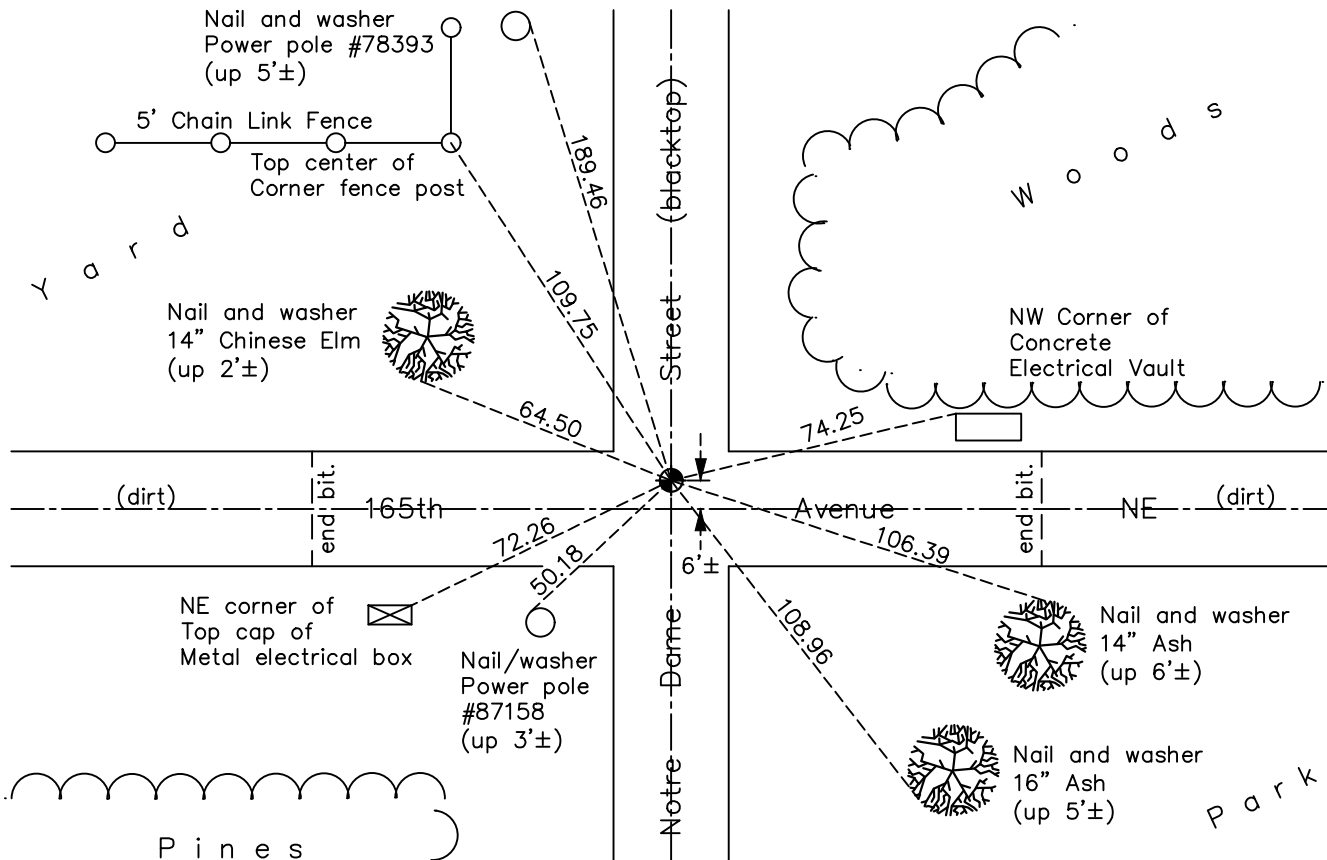
North 1/4 Corner of Sec. 14 Township 32 Range 22

On the 20th day of July, 1964, the described corner was evidenced by area resurvey

and to perpetuate the location of said corner, at the exact location thereof, a permanent marker was placed consisting of a cast iron monument

AND on the 27th day of May, 2022, said permanent marker was found and the ties
were updated.

Updated reference ties are as shown below.



Revision Date
8/12/2022

N.A.D. 1983 Coordinates
 (1996 Adjustment)

County Project Coordinates	
Northing	185166.7280
Easting	555800.0507
Date	6/24/03

I hereby certify that this United States public land survey monument record is correct and complete to the best of my knowledge and belief.

David Zieglmeier Date 12/8/23

David Zieglmeier Anoka County Surveyor
 Minnesota License Number 46179

HISTORY OF GOVERNMENT CORNER

County of Anoka

State of Minnesota

North 1/4 Corner of Sec. 14 Township 32 Range 22

CORNER HISTORY:

July 20, 1964 - Set cast iron monument down 0.5'± using area resurvey. Established ties to monument.

June 24, 1970 - Found cast iron monument and updated ties.

June 5, 1973 - Found cast iron monument and updated ties.

August 8, 1976 - Found cast iron monument and updated ties.

August 1, 1979 - Found cast iron monument and updated ties.

August 9, 1985 - Found cast iron monument and updated ties.

August 16, 1989 - Found cast iron monument and updated ties.

September 1, 1994 - Set new cast iron monument and updated ties.

August 15, 1995 - Found cast iron monument and updated ties.

June 24, 2003 - Established NAD 1983 (1996 adj.) Anoka County project coordinates by static GPS methods.

August 12, 2004 - Found cast iron monument and updated ties.

December 5, 2007 - Found cast iron monument and updated ties.

October 13, 2014 - Found cast iron monument and updated ties.

May 20, 2015 - Found cast iron monument, set construction ties, updated corner ties and verified position by VRS GPS methods prior to road construction. Removed monument.

July 16, 2015 - Set cast iron monument. Verified position by VRS GPS methods. Updated ties.

August 6, 2019 - Found cast iron monument. Verified position by VRS GPS methods. Updated ties.

May 27, 2022 - Found cast iron monument. Verified position by VRS GPS methods. Updated ties.