

# CERTIFICATE OF LOCATION OF GOVERNMENT CORNER

County of Anoka

State of Minnesota

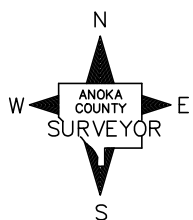
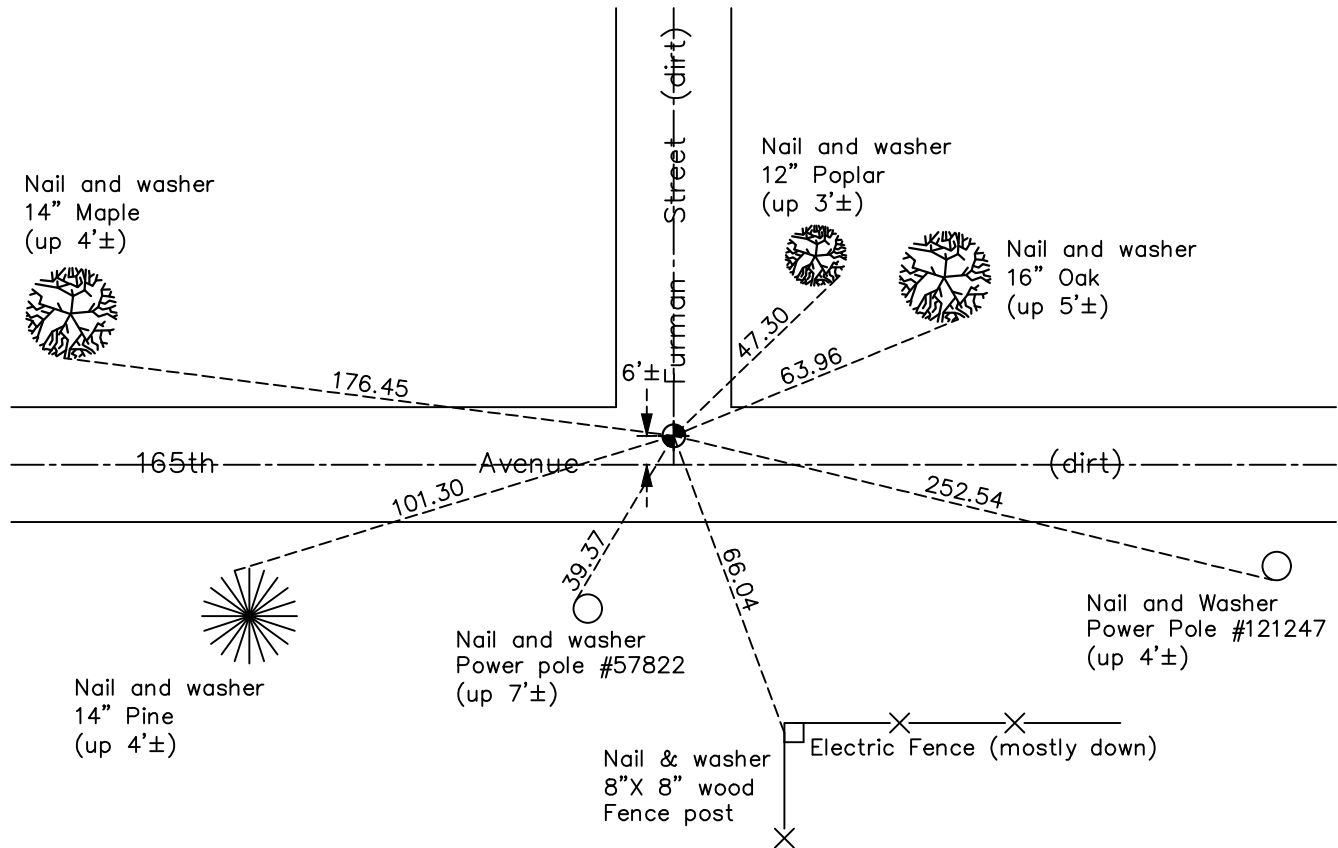
## Northwest Corner of Sec. 14 Township 32 Range 22

On the 20th day of July, 1964, the described corner was evidenced by area resurvey

and to perpetuate the location of said corner, at the exact location thereof, a permanent marker was placed consisting of a cast iron monument

AND on the 27th day of May, 2022, said permanent marker was found down 2'± and the ties were updated

Updated reference ties are as shown below.



Revision Date  
10/21/2022

N.A.D. 1983 Coordinates  
(1996 Adjustment)

County Project Coordinates	
Northing	185186.0130
Easting	553183.2688
Date	6/23/03

I hereby certify that this United States public land survey monument record is correct and complete to the best of my knowledge and belief.

*David Zieglmeier* Date 12/8/23

David Zieglmeier Anoka County Surveyor  
Minnesota License Number 46179

# HISTORY OF GOVERNMENT CORNER

Page No. 50

County of Anoka

State of Minnesota

## Northwest Corner of Sec. 14 Township 32 Range 22

### **CORNER HISTORY:**

July 20, 1964 - Set cast iron monument down 0.5' using area resurvey. Established ties to monument.

June 24, 1970 - Found cast iron monument and updated ties.

June 5, 1973 - Found cast iron monument and updated ties.

August 8, 1976 - Found cast iron monument and updated ties.

August 1, 1979 - Found cast iron monument and updated ties.

September 9, 1985 - Found cast iron monument and updated ties.

August 14, 1989 - Found cast iron monument and updated ties.

August 15, 1995 - Found cast iron monument and updated ties.

June 23, 2003 - Established NAD 1983 (1996 adj.) Anoka County project coordinates by static GPS methods.

August 17, 2004 - Found cast iron monument down 1.5' and updated ties.

September 11, 2014 - Found cast iron monument down 2'±. Verified position by VRS GPS methods. Updated ties.

August 5, 2019 - Found cast iron monument down 2'±. Verified position by VRS GPS methods. Updated ties.

May 27, 2022 - Found cast iron monument down 2'±. Verified position by VRS GPS methods. Updated ties.