

# CERTIFICATE OF LOCATION OF GOVERNMENT CORNER

County of Anoka

State of Minnesota

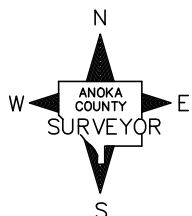
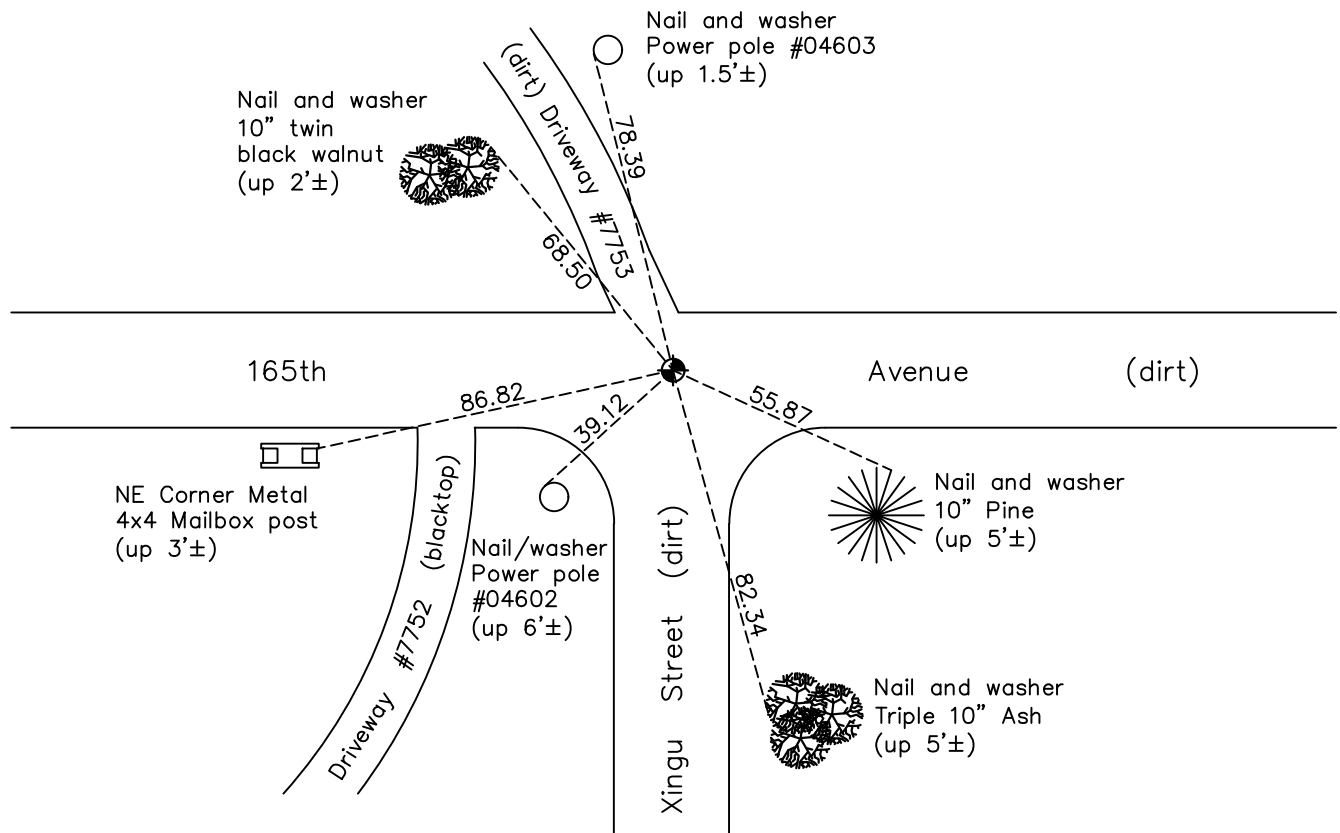
## North 1/4 Corner of Sec. 15 Township 32 Range 22

On the 13th day of May, 1963, the described corner was evidenced by a well point

and to perpetuate the location of said corner, at the exact location thereof, a permanent marker was placed consisting of a cast iron monument down 0.5'±

AND on the 27th day of May, 2022, said permanent marker was found down 1.9'± and the ties were updated

Updated reference ties are as shown below.



Revision Date  
10/21/2022

N.A.D. 1983 Coordinates  
 (1996 Adjustment)

County Project Coordinates	
Northing	<u>185201.6397</u>
Easting	<u>550575.4584</u>
Date	<u>6/23/03</u>

I hereby certify that this United States public land survey monument record is correct and complete to the best of my knowledge and belief.

*David Zieglmeier* Date 12/8/23

David Zieglmeier Anoka County Surveyor  
 Minnesota License Number 46179

# HISTORY OF GOVERNMENT CORNER

Page No. 51

County of Anoka

State of Minnesota

## North 1/4 Corner of Sec. 15 Township 32 Range 22

### **CORNER HISTORY:**

May 13, 1963 - Found 1-1/2" iron pipe down 5" set by Don Hult during area resurvey. Updated ties.

September 8, 1969 - Found well point and replaced with cast iron monument down 0.5'±. Updated ties.

June 5, 1973 - Found cast iron monument and updated ties.

August 8, 1976 - Found cast iron monument and updated ties.

August 1, 1979 - Found cast iron monument and updated ties.

August 9, 1985 - Found cast iron monument down 0.5' and updated ties.

August 16, 1989 - Found cast iron monument and updated ties.

April 19, 1990 - Found cast iron monument and updated ties.

August 16, 1989 - Found cast iron monument and updated ties.

August 15, 1995 - Found cast iron monument and updated ties.

June 23, 2003 - Established NAD 1983 (1996 adj.) Anoka County project coordinates by static GPS methods.

April 7, 2008 - Found cast iron monument down 1'± and updated ties.

September 11, 2014 - Found cast iron monument down 2'±. Verified position by VRS GPS methods. Updated ties.

August 7, 2019 - Found cast iron monument down 2'± and updated ties.

May 27, 2022 - Found cast iron monument down 1.9'±, verified position by GPS VRS method and updated ties.