

# CERTIFICATE OF LOCATION OF GOVERNMENT CORNER

County of Anoka

State of Minnesota

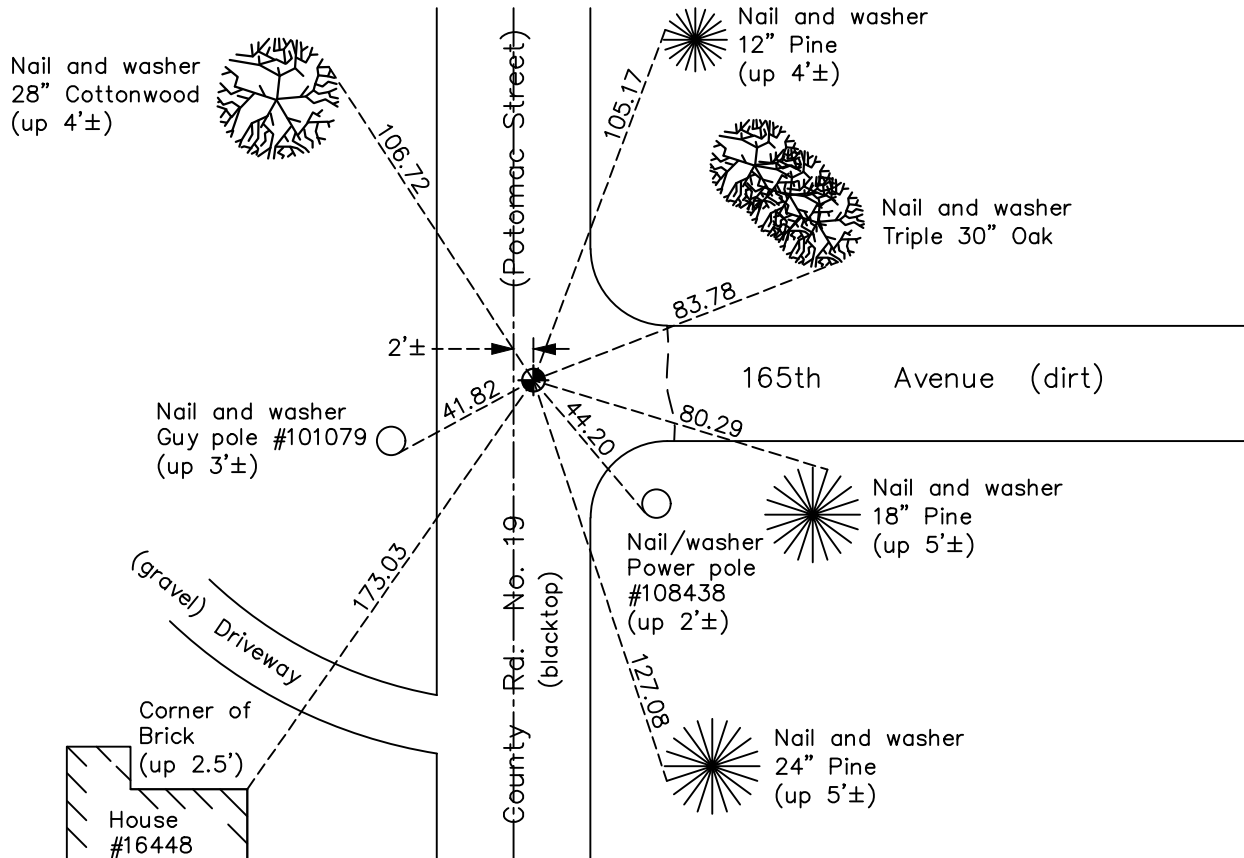
## Southeast Corner of Sec. 9 Township 32 Range 22

On the 8th day of September, 1969, the described corner was evidenced by a 1/2" iron pipe set above a solid iron bar

and to perpetuate the location of said corner, at the exact location thereof, a permanent marker was placed consisting of a cast iron monument

AND on the 6th day of November, 2023, said permanent marker was found CIM broken and was removed. Reset w/ full CIM & added 6" riser w/ top. Ties updated after setting and verified w/ RTK.

Updated reference ties are as shown below.



Revision Date  
11/09/2023

N.A.D. 1983 Coordinates  
(1996 Adjustment)

County Project Coordinates	
Northing	<u>185222.9519</u>
Easting	<u>547963.5435</u>
Date	<u>6/23/03</u>

I hereby certify that this United States public land survey monument record is correct and complete to the best of my knowledge and belief.

*David Zieglmeier* Date 12/8/23

David Zieglmeier Anoka County Surveyor  
Minnesota License Number 46179

# HISTORY OF GOVERNMENT CORNER

Page No. 52

County of Anoka

State of Minnesota

## Southeast Corner of Sec. 9 Township 32 Range 22

### **CORNER HISTORY:**

September 18, 1964 - Found 1/2" iron pipe flush with a solid iron bar underneath. Updated ties.

September 8, 1969 - Found 1/2" iron pipe on top of solid iron bar. Replaced 1/2" iron pipe with a cast iron monument flush on top of solid iron bar. Updated ties.

June 5, 1973 - Found cast iron monument and updated ties.

August 5, 1976 - Found cast iron monument and updated ties.

August 1, 1979 - Found cast iron monument and updated ties.

August 10, 1989 - Found cast iron monument and updated ties.

June 28, 1990 - Found cast iron monument and updated ties.

August 14, 1995 - Found cast iron monument and updated ties.

June 13, 1997 - Found cast iron monument and set construction ties prior to road construction.

August 26, 1997 - Set cast iron monument after road construction. Updated ties.

June 23, 2003 - Established NAD 1983 (1996 adj.) Anoka County project coordinates by static GPS methods.

November 14, 2007 - Found cast iron monument and updated ties.

September 26, 2014 - Found cast iron monument. Verified position by VRS GPS methods. Updated ties.

August 7, 2019 - Found cast iron monument. Verified position by VRS GPS methods. Updated ties.

May 27th, 2022 - Cast Iron Monument found broken down 0.4'±, using center of monument fins, verified position by GPS VRS method and updated ties.

November 6, 2023 - Cast Iron Monument found broken and was removed. Position was reset with a full Cast Iron Monument with an added 6" riser (for expected future road construction) and top. Ties were updated after setting and position was verified by RTK GPS method.