

CERTIFICATE OF LOCATION OF GOVERNMENT CORNER

County of Anoka

State of Minnesota

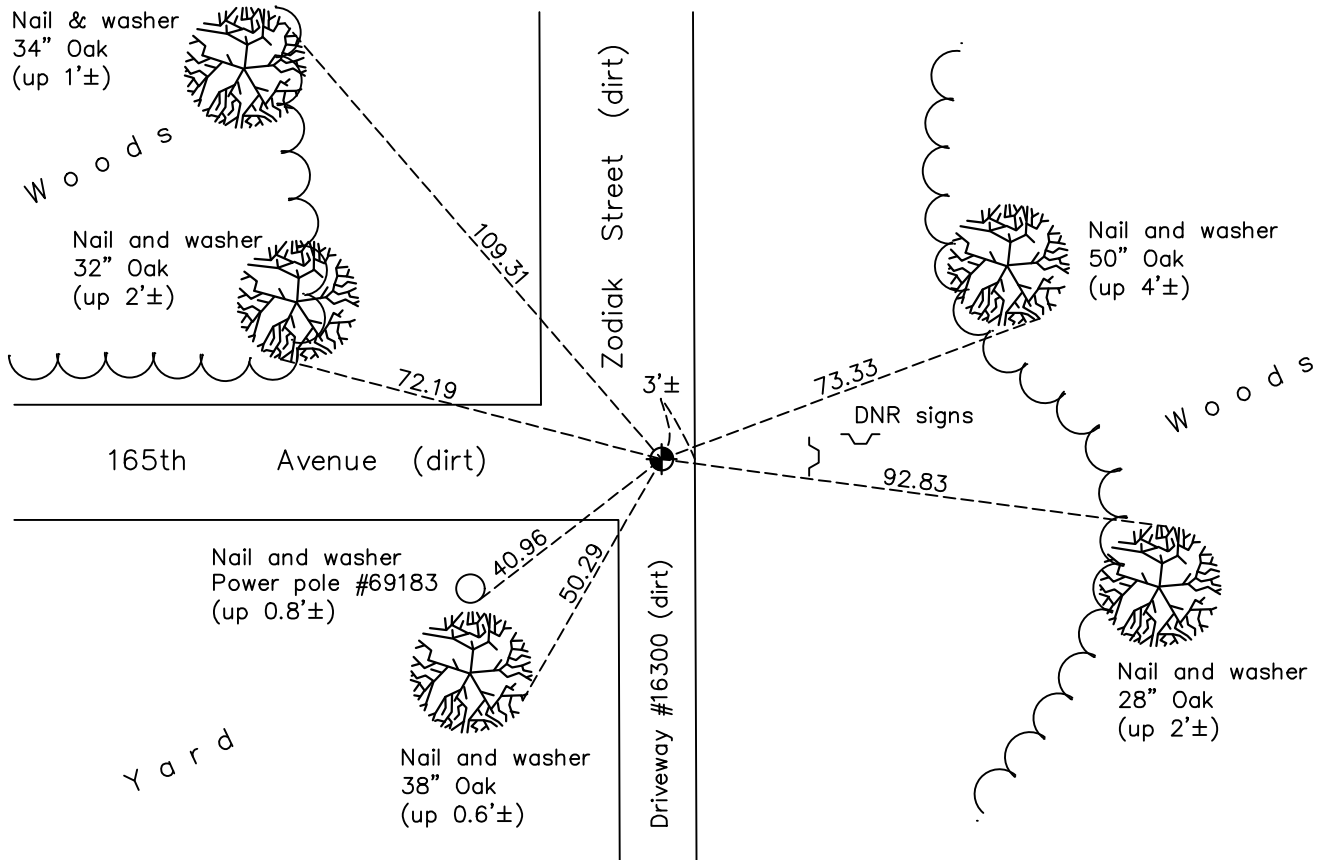
Northwest Corner of Sec. 16 Township 32 Range 22

On the 6th day of December, 1963, the described corner was evidenced by a 4" X 5" concrete monument

and to perpetuate the location of said corner, at the exact location thereof, a permanent marker was placed consisting of a cast iron monument

AND on the 31st day of May, 2022, said permanent marker was found down 0.6'± and the ties were updated

Updated reference ties are as shown below.



Revision Date
10/21/2022

N.A.D. 1983 Coordinates
(1996 Adjustment)

County Project Coordinates	
Northing	<u>185203.9335</u>
Easting	<u>542742.7546</u>
Date	<u>6/24/03</u>

I hereby certify that this United States public land survey monument record is correct and complete to the best of my knowledge and belief.

David Zieglmeier Date 12/8/23

David Zieglmeier Anoka County Surveyor
Minnesota License Number 46179

HISTORY OF GOVERNMENT CORNER

Page No. 54

County of Anoka

State of Minnesota

Northwest Corner of Sec. 16 Township 32 Range 22

CORNER HISTORY:

December 6, 1963 - Found 4" x 5" Concrete monument up 16" using Don Hult ties. Concrete monument was 0.3'± out of plumb to the North. Straightened up monument and updated ties

July 6, 1970 - Found concrete monument broken and replaced with a cast iron monument up 0.1'± using corner ties.

June 5, 1973 - Found cast iron monument and updated ties.

August 8, 1976 - Found cast iron monument and updated ties.

August 1, 1979 - Found cast iron monument and updated ties.

July 7, 1982 - Found cast iron monument and updated ties.

August 25, 1989 - Found cast iron monument and updated ties.

August 14, 1995 - Found cast iron monument and updated ties.

June 24, 2003 - Found cast iron monument down 0.4'±. Established NAD 1983 (1996 adj.) Anoka County project coordinates by static GPS methods. Updated ties.

September 11, 2014 - Found cast iron monument down 0.5'±. Verified position by VRS GPS methods. Updated ties.

August 8, 2019 - Found cast iron monument down 0.5'± and updated ties.

May 31, 2022 - Found cast iron down 0.6'±, verified position by GPS VRS method and updated ties.