

CERTIFICATE OF LOCATION OF GOVERNMENT CORNER

County of Anoka

State of Minnesota

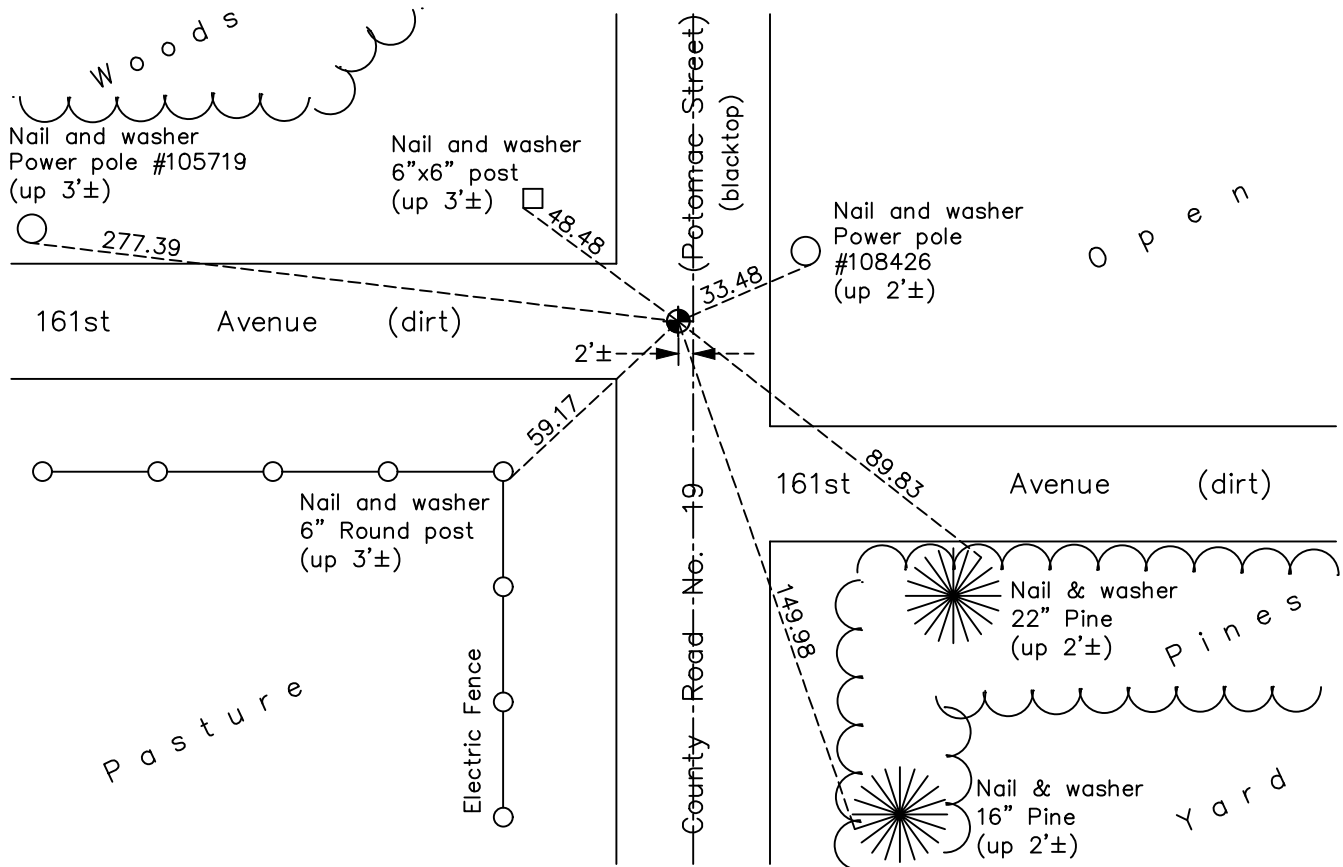
West 1/4 Corner of Sec. 15 Township 32 Range 22

On the 13th day of May, 1963, the described corner was evidenced by a railroad spike

and to perpetuate the location of said corner, at the exact location thereof, a permanent marker was placed consisting of a cast iron monument

AND on the 7th day of June, 2022, said permanent marker was found and the ties
were updated

Updated reference ties are as shown below.



N.A.D. 1983 Coordinates
(1996 Adjustment)

County Project Coordinates	
Northing	<u>182601.5735</u>
Easting	<u>547922.5649</u>
Date	<u>6/16/03</u>

Revision Date
10/21/2022

I hereby certify that this United States public land survey monument record is correct and complete to the best of my knowledge and belief.

David Zieglmeier Date 12/8/23

David Zieglmeier Anoka County Surveyor
Minnesota License Number 46179

HISTORY OF GOVERNMENT CORNER

Page No. 60

County of Anoka

State of Minnesota

West 1/4 Corner of Sec. 15 Township 32 Range 22

CORNER HISTORY:

May 13, 1963 - Found railroad spike flush set by Don Hult during area resurvey. Updated ties.

July 14, 1970 - Found railroad spike missing. Set cast iron monument flush using corner ties and Registered Land Survey No. 2. Updated ties.

June 6, 1973 - Found cast iron monument and updated ties.

August 5, 1976 - Found cast iron monument and updated ties.

August 1, 1979 - Found cast iron monument and updated ties.

August 10, 1989 - Found cast iron monument and updated ties.

August 14, 1995 - Found cast iron monument and updated ties.

June 13, 1997 - Found cast iron monument and set construction ties prior to road construction.

August 26, 1997 - Set cast iron monument after road construction. Updated ties.

June 16, 2003 - Established NAD 1983 (1996 adj.) Anoka County project coordinates by static GPS methods.

November 13, 2007 - Found cast iron monument and updated ties.

July 12, 2012 - Found cast iron monument broken down 0.5' and checked position against corner ties.

September 19, 2012 - Set cast iron monument using static GPS methods. Updated ties.

September 26, 2014 - Found cast iron monument and updated ties.

August 8, 2019 - Found cast iron monument. Verified position by VRS GPS methods. Updated ties.

June 7, 2022 - Found cast iron monument, verified position by VRS GPS method and updated ties.