

# CERTIFICATE OF LOCATION OF GOVERNMENT CORNER

County of Anoka

State of Minnesota

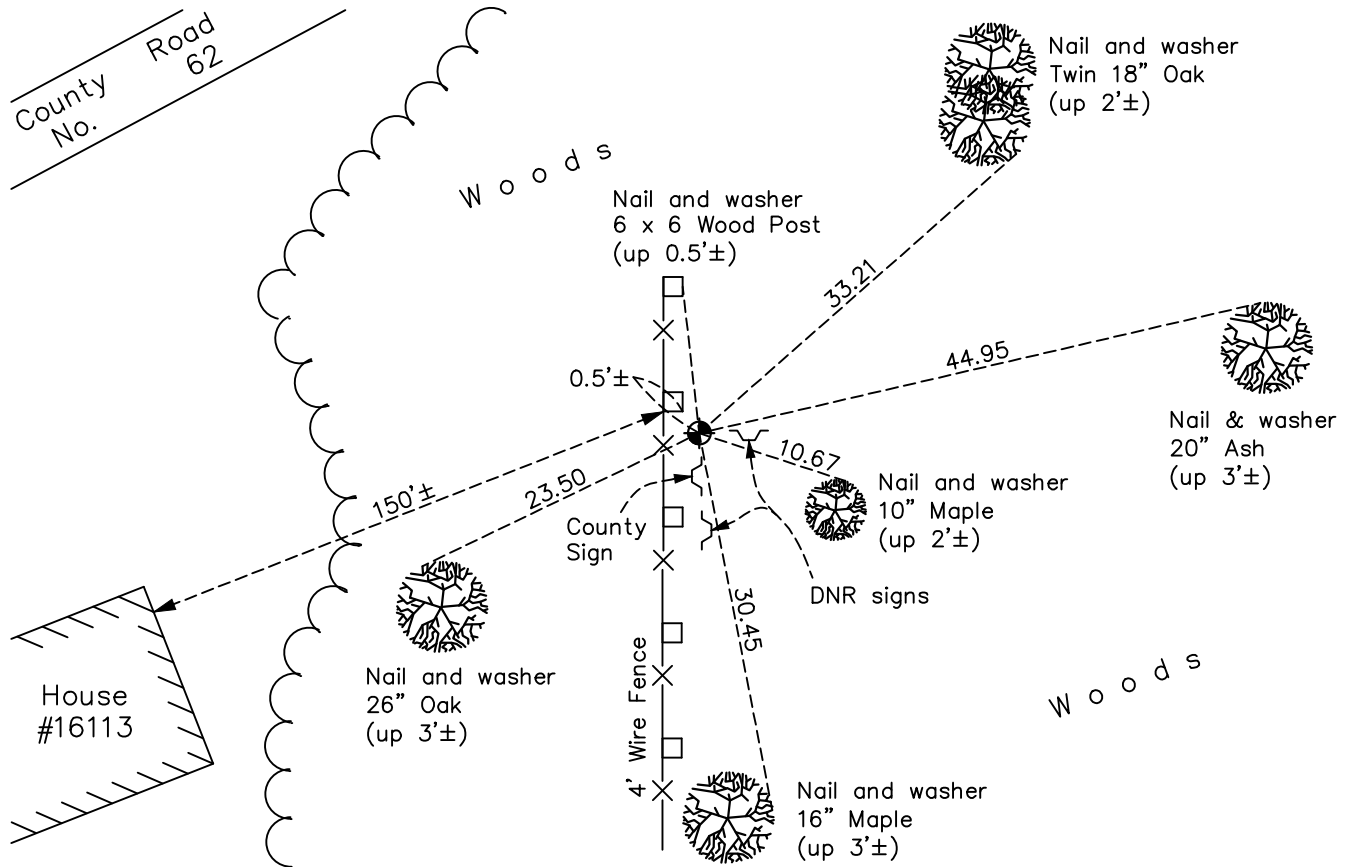
## West 1/4 Corner of Sec. 14 Township 32 Range 22

On the 20th day of July, 1964, the described corner was evidenced by area resurvey

and to perpetuate the location of said corner, at the exact location thereof, a permanent marker was placed consisting of a cast iron monument with a sign and post on the south side

AND on the 1st day of June, 2022, said permanent marker was found flush and the  
ties were updated.

Updated reference ties are as shown below.



Revision Date  
10/21/2022

N.A.D. 1983 Coordinates  
 (1996 Adjustment)

County Project Coordinates	
Northing	<u>182543.6826</u>
Easting	<u>553212.1376</u>
Date	<u>4/25/05</u>

I hereby certify that this United States public land survey monument record is correct and complete to the best of my knowledge and belief.  
*David Zieglmeier* Date 12/8/23  
 David Zieglmeier Anoka County Surveyor  
 Minnesota License Number 46179

# HISTORY OF GOVERNMENT CORNER

Page No. 61

County of Anoka

State of Minnesota

West 1/4 Corner of Sec. 14 Township 32 Range 22

## **CORNER HISTORY:**

July 20, 1964 - Set cast iron monument up 0.1' using area resurvey. Established ties to monument.

June 25, 1970 - Found cast iron monument and updated ties.

June 11, 1973 - Found cast iron monument and updated ties.

August 8, 1976 - Found cast iron monument and updated ties.

August 1, 1979 - Found cast iron monument and updated ties.

July 22, 1982 - Found cast iron monument and updated ties.

August 6, 1985 - Found cast iron monument and updated ties.

June 12, 1990 - Found cast iron monument and updated ties.

August 17, 1995 - Found cast iron monument and updated ties.

April 25, 2005 - Established NAD 1983 (1996 adj.) Anoka County project coordinates by static GPS methods.

April 21, 2008 - Found cast iron monument and updated ties.

September 23, 2014 - Found cast iron monument and updated ties.

August 8, 2019 - Found cast iron monument flush and updated ties.

June 1, 2022 - Found cast iron monument flush, verified position with GPS VRS method and updated ties.