

CERTIFICATE OF LOCATION OF GOVERNMENT CORNER

County of Anoka

State of Minnesota

Witness Corner of Sec. 13 Township 32 Range 22

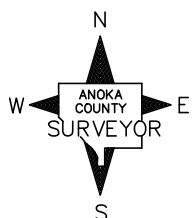
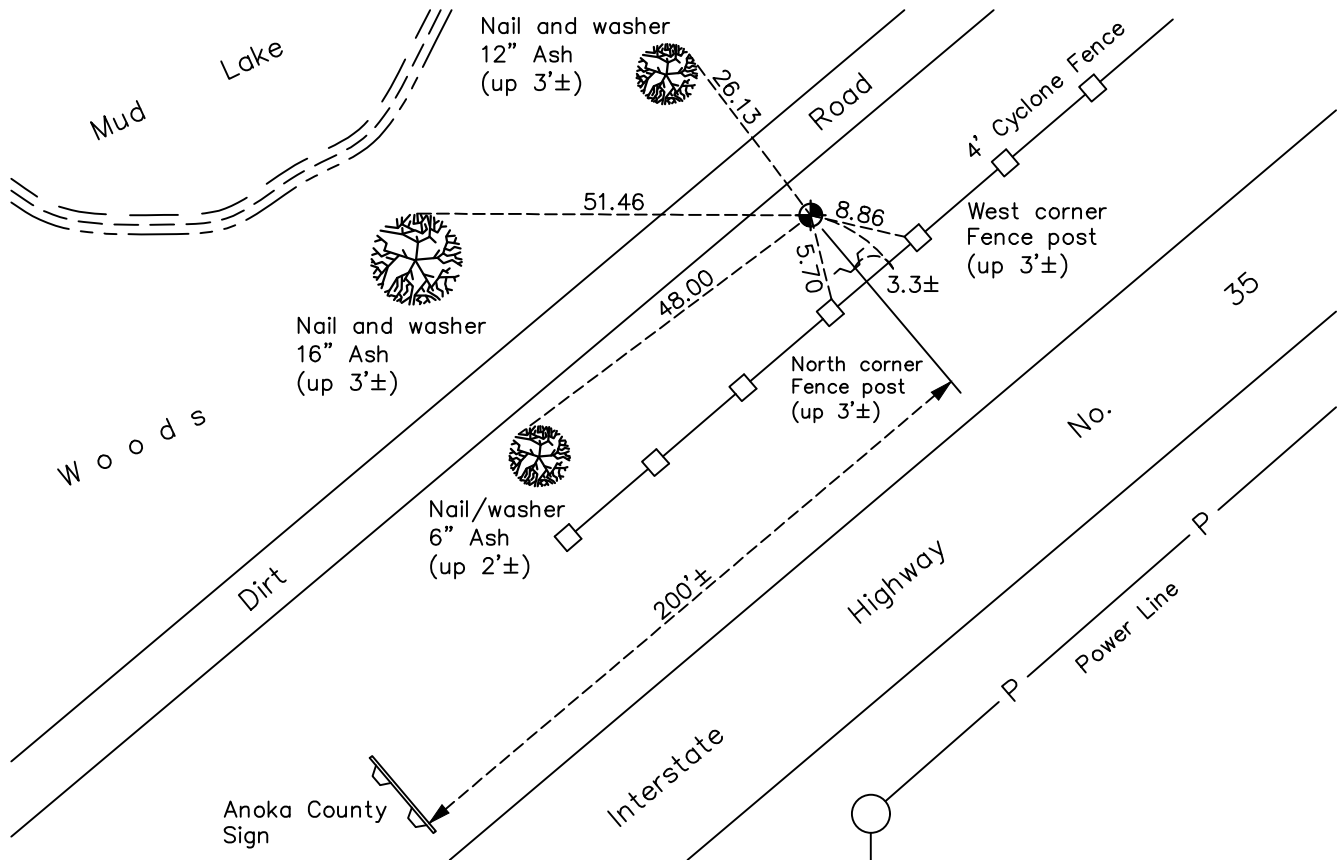
(on east line of section)

On the 12th day of February, 1979, the described corner was evidenced by area resurvey

and to perpetuate the location of said corner, at the exact location thereof, a permanent marker was placed consisting of a cast iron monument with a sign and post 3' SE along fence line

AND on the 7th day of June, 2022, said permanent marker was found down 0.5'± and the ties were updated.

Updated reference ties are as shown below.



Revision Date
11/29/2022

N.A.D. 1983 Coordinates
 (1996 Adjustment)

County Project Coordinates	
Northing	<u>181465.1975</u>
Easting	<u>563647.6397</u>
Date	<u>7/01/03</u>

I hereby certify that this United States public land survey monument record is correct and complete to the best of my knowledge and belief.
David Zieglmeier Date 12/8/23
 David Zieglmeier Anoka County Surveyor
 Minnesota License Number 46179

HISTORY OF GOVERNMENT CORNER

Page No. 65A

County of Anoka

State of Minnesota

Witness Corner of Sec. 13 Township 32 Range 22
(on east line of section)

CORNER HISTORY:

February 12, 1979 - Set 1/2" iron pipe using area resurvey. Established ties to iron pipe.

May 15, 1979 - Found 1/2" iron pipe and replaced with a cast iron monument. Updated ties.

July 20, 1982 - Found cast iron monument and updated ties.

August 14, 1985 - Found cast iron monument and updated ties.

September 1, 1989 - Found cast iron monument and updated ties.

September 6, 1995 - Found cast iron monument and updated ties.

July 1, 2003 - Established NAD 1983 (1996 adj.) Anoka County project coordinates by static GPS methods.

September, 25 - 2014 - Found cast iron monument down 0.5'±. Set new sign and post 2'± SE of monument along fence line. Updated ties.

August 23, 2019 - Found cast iron monument down 0.5'±. Set new sign and post 3'± SE of monument along fence line. Verified position by VRS GPS methods. Updated ties.

June 7, 2022 - Found cast iron monument down 0.5'±. Verified position by VRS GPS methods. Updated ties.