

CERTIFICATE OF LOCATION OF GOVERNMENT CORNER

County of Anoka

State of Minnesota

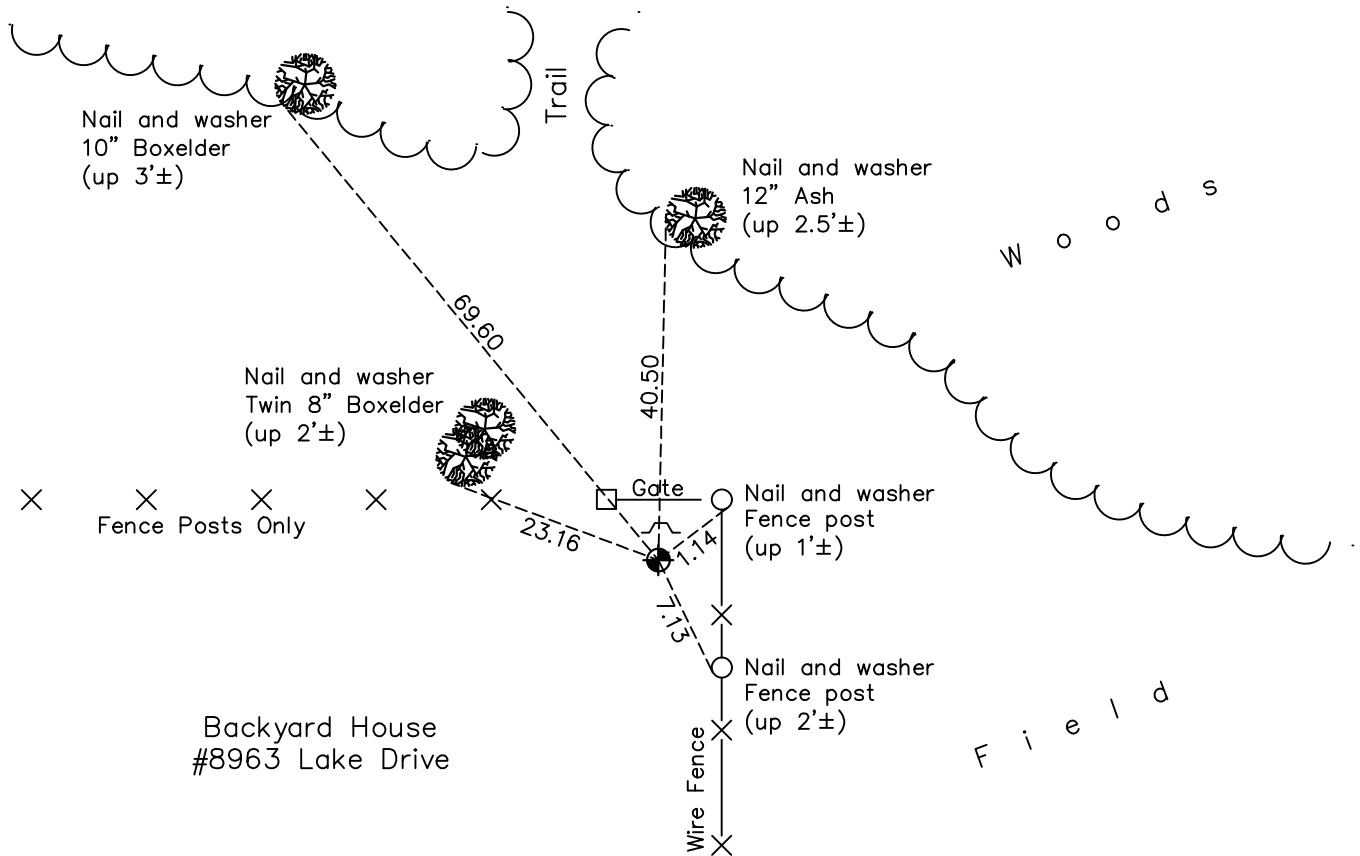
Northeast Corner of Sec. 23 Township 32 Range 22

On the 20th day of June, 1963, the described corner was evidenced by area property surveys

and to perpetuate the location of said corner, at the exact location thereof, a permanent marker was placed consisting of a cast iron monument with a sign and post on the north side

AND on the 8th day of June, 2022, said permanent marker was found down 0.4'± and the ties were updated

Updated reference ties are as shown below.



N.A.D. 1983 Coordinates
(1996 Adjustment)

County Project Coordinates	
Northing	<u>179865.7704</u>
Easting	<u>558482.7084</u>
Date	<u>5/18/04</u>

Revision Date
11/29/2022

I hereby certify that this United States public land survey monument record is correct and complete to the best of my knowledge and belief.

David Zieglmeier Date 12/8/23

David Zieglmeier Anoka County Surveyor
Minnesota License Number 46179

HISTORY OF GOVERNMENT CORNER

Page No. 67

County of Anoka

State of Minnesota

Northeast Corner of Sec. 23 Township 32 Range 22

CORNER HISTORY:

June 20, 1963 - Set spike using area property surveys. Established ties to spike.

November 17, 1964 - Found spike and replaced with a cast iron monument. Updated ties.

July 15, 1970 - Found cast iron monument and updated ties.

JUNE 13, 1973 - Found cast iron monument and updated ties.

July 13, 1982 - Found cast iron monument and updated ties.

August 14, 1985 - Found cast iron monument and updated ties.

July 16, 1990 - Found cast iron monument and updated ties. Set sign and post on the North side.

August 21, 1995 - Found cast iron monument and updated ties.

May 18, 2004 - Established NAD 1983 (1996 adj.) Anoka County project coordinates by static GPS methods.

April 7, 2008 - Found cast iron monument and updated ties.

October 14, 2014 - Found cast iron monument down 0.4'± and updated ties.

August 8, 2019 - Found cast iron monument down 0.4'± and updated ties.

June 8th, 2022 - Found cast iron monument down 0.4'±, verified position by VRS GPS method and updated ties