

CERTIFICATE OF LOCATION OF GOVERNMENT CORNER

County of Anoka

State of Minnesota

Witness Corner of Sec. 14 Township 32 Range 22

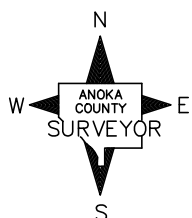
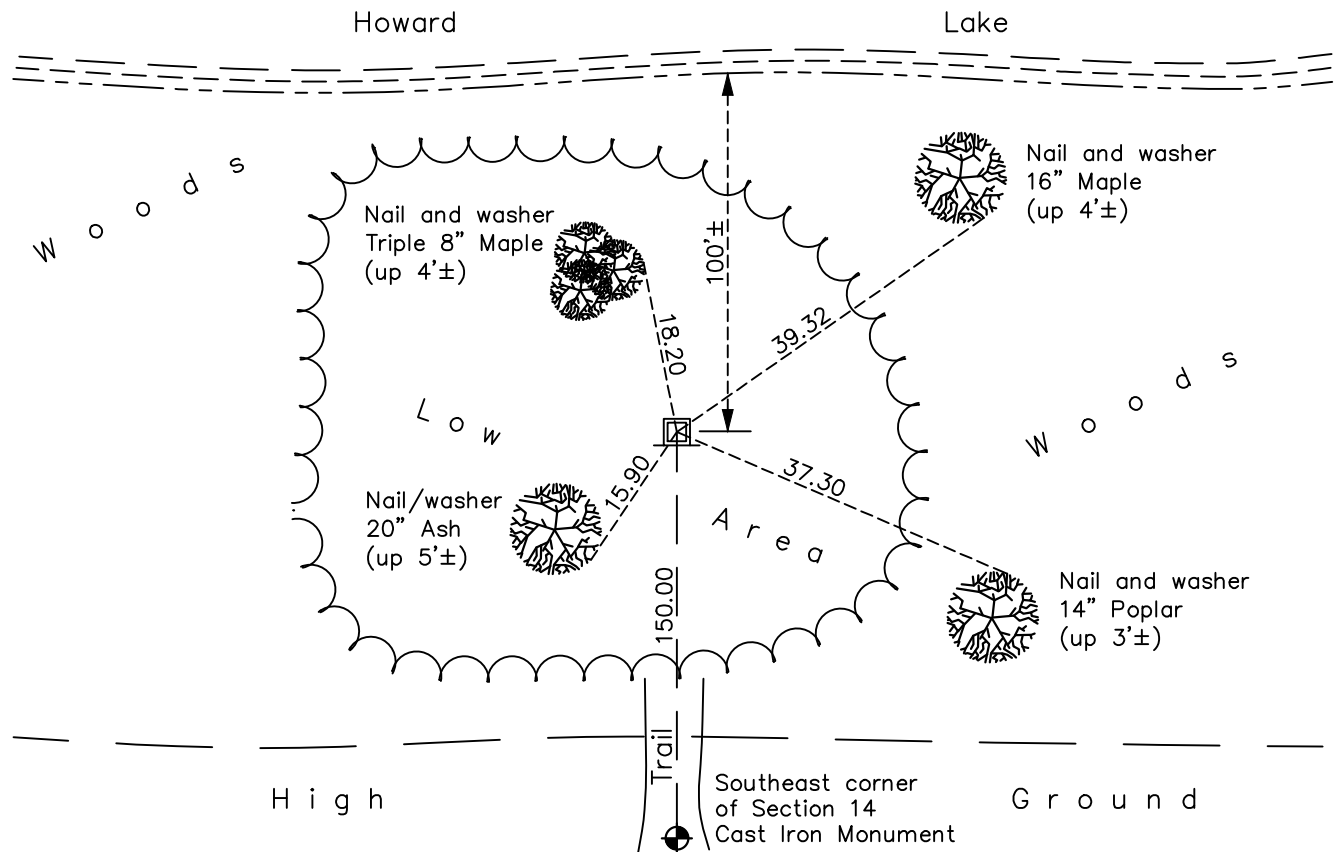
(on east line of SE 1/4)

On the 20th day of February, 1979, the described corner was evidenced by area resurvey

and to perpetuate the location of said corner, at the exact location thereof, a permanent marker was placed consisting of a red and white 2" square steel Telespar monument

AND on the 8th day of June, 2022, said permanent marker was found up 5'± with a sign attached facing south and the ties were updated

Updated reference ties are as shown below.



Revision Date
11/29/2022

N.A.D. 1983 Coordinates
 (1996 Adjustment)

County Project Coordinates	
Northing	<u>180015.5497</u>
Easting	<u>558480.3422</u>
Date	<u>1/18/06</u>

I hereby certify that this United States public land survey monument record is correct and complete to the best of my knowledge and belief.

David Zieglmeier Date 12/8/23

David Zieglmeier Anoka County Surveyor
 Minnesota License Number 46179

HISTORY OF GOVERNMENT CORNER

Page No. 67A

County of Anoka

State of Minnesota

Witness Corner of Sec. 14 Township 32 Range 22
(on east line of SE 1/4)

CORNER HISTORY:

February 20, 1979 - Set red and white iron pipe w/sign up 3'± using area resurvey. Established ties to iron pipe.

August 21, 1995 - Found red and white iron pipe and updated ties.

January 18, 2006 - Established NAD 1983 (1996 adj.) Anoka County project coordinates by static GPS methods.

April 7, 2008 - Found red and white 2" x 2" steel Telspar monument and updated ties.

October 14, 2014 - Found red and white 2" x 2" steel Telspar monument w/sign attached up 5'±. Updated ties.

August 8, 2019 - Found red and white 2" x 2" steel Telspar monument w/sign attached up 5'±. Updated ties.

June 8, 2022 - Found red and white 2" x 2" steel Telspar monument w/sign attached up 5'±. Updated ties.