

CERTIFICATE OF LOCATION OF GOVERNMENT CORNER

County of Anoka

State of Minnesota

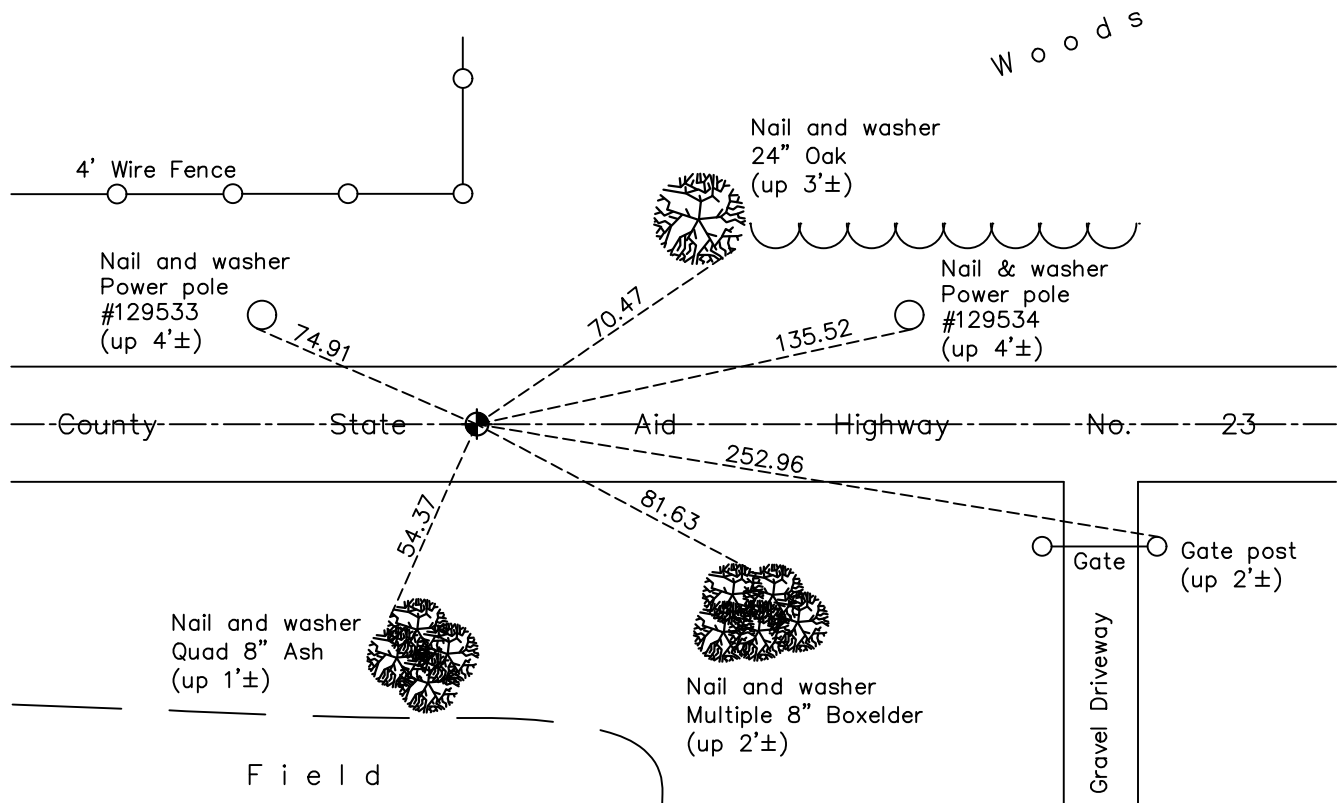
Southwest Corner of Sec. 14 Township 32 Range 22

On the 17th day of November, 1964, the described corner was evidenced by area resurvey

and to perpetuate the location of said corner, at the exact location thereof, a permanent marker was placed consisting of a cast iron monument

AND on the 9th day of June, 2022, said permanent marker was found flush and the ties were updated

Updated reference ties are as shown below.



Revision Date
 11/29/2022

N.A.D. 1983 Coordinates
(1996 Adjustment)

County Project Coordinates	
Northing	<u>179932.0440</u>
Easting	<u>553240.4957</u>
Date	<u>6/17/03</u>

I hereby certify that this United States public land survey monument record is correct and complete to the best of my knowledge and belief.

David Zieglmeier Date 12/8/23

David Zieglmeier Anoka County Surveyor
 Minnesota License Number 46179

HISTORY OF GOVERNMENT CORNER

Page No. 69

County of Anoka

State of Minnesota

Southwest Corner of Sec. 14 Township 32 Range 22

CORNER HISTORY:

November 17, 1964 - Set 3/4" x 3-1/2" bolt down 1/2" in concrete road using area resurvey. Established ties to bolt.

June 29, 1970 - Found bolt in concrete road and updated ties.

June 8, 1973 - Found bolt in concrete road and updated ties.

August 10, 1976 - Found bolt in concrete road and updated ties.

August 1, 1979 - Found bolt in concrete road and updated ties.

December 9, 1987 - Found 1/2" iron pipe and updated ties.

August 8, 1989 - Found 1/2" iron pipe and updated ties.

August 11, 1995 - Found 1/2" iron pipe and updated ties.

July 17, 1998 - Found 1/2" iron pipe and updated ties.

June 17, 2003 - Established NAD 1983 (1996 adj.) Anoka County project coordinates by static GPS methods.

November 15, 2007 - Found 1/2" iron pipe and updated ties.

November 16, 2011 - Found cast iron monument and updated ties.

October 10, 2014 - Found cast iron monument and updated ties.

August 16, 2019 - Found cast iron monument. Verified position by VRS GPS methods. Updated ties.

June 9, 2022 - Found cast iron monument. Verified position by VRS GPS methods. Updated ties.