

CERTIFICATE OF LOCATION OF GOVERNMENT CORNER

County of Anoka

State of Minnesota

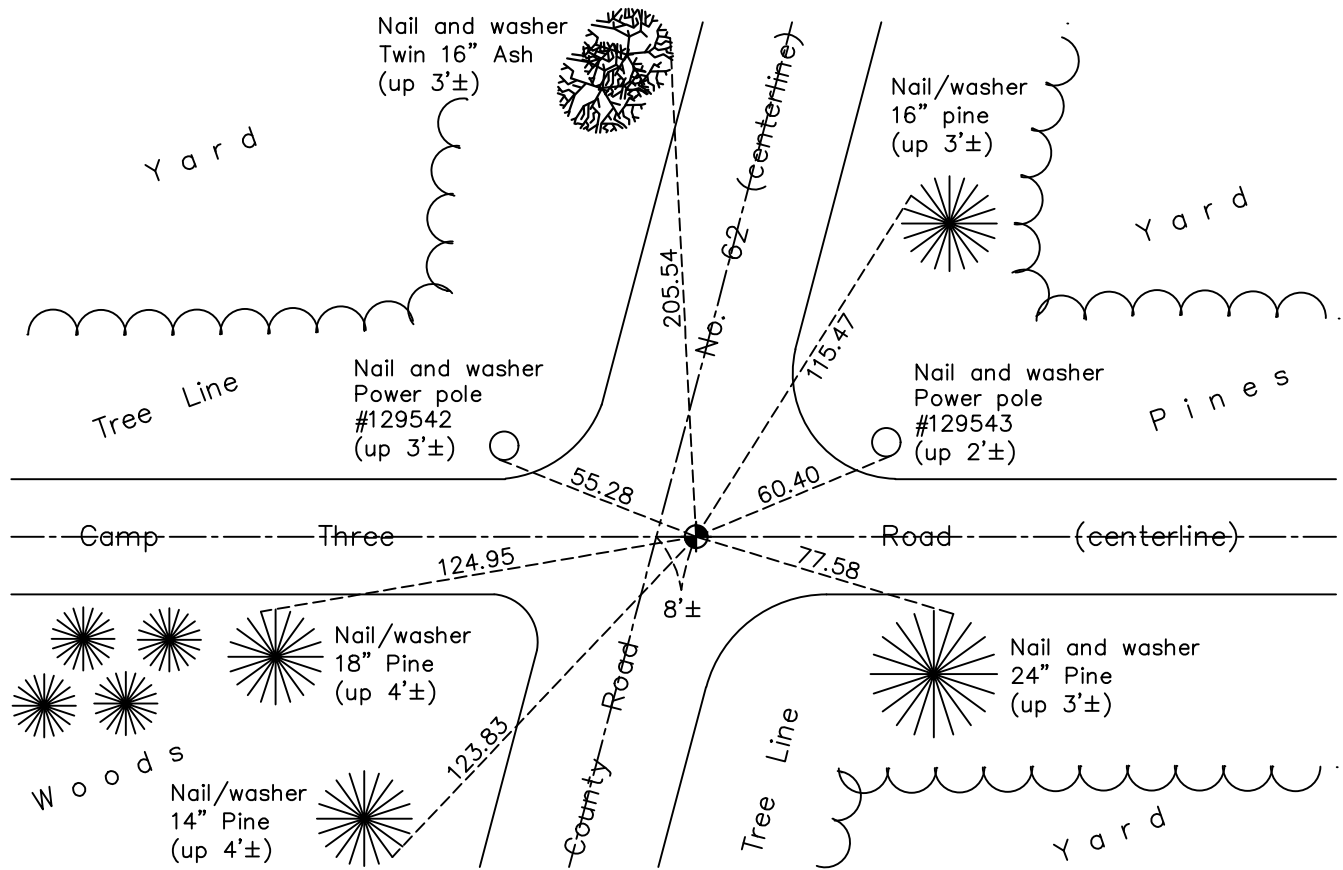
South 1/4 Corner of Sec. 15 Township 32 Range 22

On the 20th day of July, 1964, the described corner was evidenced by area resurvey

and to perpetuate the location of said corner, at the exact location thereof, a permanent marker was placed consisting of a cast iron monument

AND on the 1st day of June, 2022, said permanent marker was found flush and the ties were updated

Updated reference ties are as shown below.



Revision Date
11/29/2022

N.A.D. 1983 Coordinates
 (1996 Adjustment)

County Project Coordinates	
Northing	<u>179960.1471</u>
Easting	<u>550538.2371</u>
Date	<u>6/17/03</u>

I hereby certify that this United States public land survey monument record is correct and complete to the best of my knowledge and belief.
David Zieglmeier Date 12/8/23
 David Zieglmeier Anoka County Surveyor
 Minnesota License Number 46179

HISTORY OF GOVERNMENT CORNER

Page No. 70

County of Anoka

State of Minnesota

South 1/4 Corner of Sec. 15 Township 32 Range 22

CORNER HISTORY:

1960 - Found pipe by Anoka County highway department and updated ties.

July 20, 1964 - Set cast iron monument using area resurvey. Established ties to monument.

June 26, 1970 - Found cast iron monument flush and updated ties.

June 8, 1973 - Found cast iron monument and updated ties.

August 10, 1976 - Found cast iron monument and updated ties.

August 1, 1979 - Found cast iron monument and updated ties.

July 13, 1982 - Found cast iron monument and updated ties.

August 2, 1985 - Found cast iron monument and updated ties.

August 8, 1989 - Found cast iron monument and updated ties.

August 11, 1995 - Found cast iron monument and updated ties.

June 17, 2003 - Estbalished NAD 1983 (1996 adj.) Anoka County project coordinates by static GPS methods.

November 15, 2007 - Found cast iron monument and updated ties.

June 12, 2012 - Found cast iron monument, set construction ties and updated corner ties prior to road construction. Removed monument.

September 12, 2012 - Set cast iron monument after road construction using static GPS methods. Updated ties.

October 13, 2014 - Found cast iron monument and updated ties.

August 9, 2019 - Found cast iron monument. Verified position by VRS GPS methods. Updated ties.

June 1, 2022 - Found cast iron monument. Verified position by VRS GPS method. Updated ties.