

CERTIFICATE OF LOCATION OF GOVERNMENT CORNER

County of Anoka

State of Minnesota

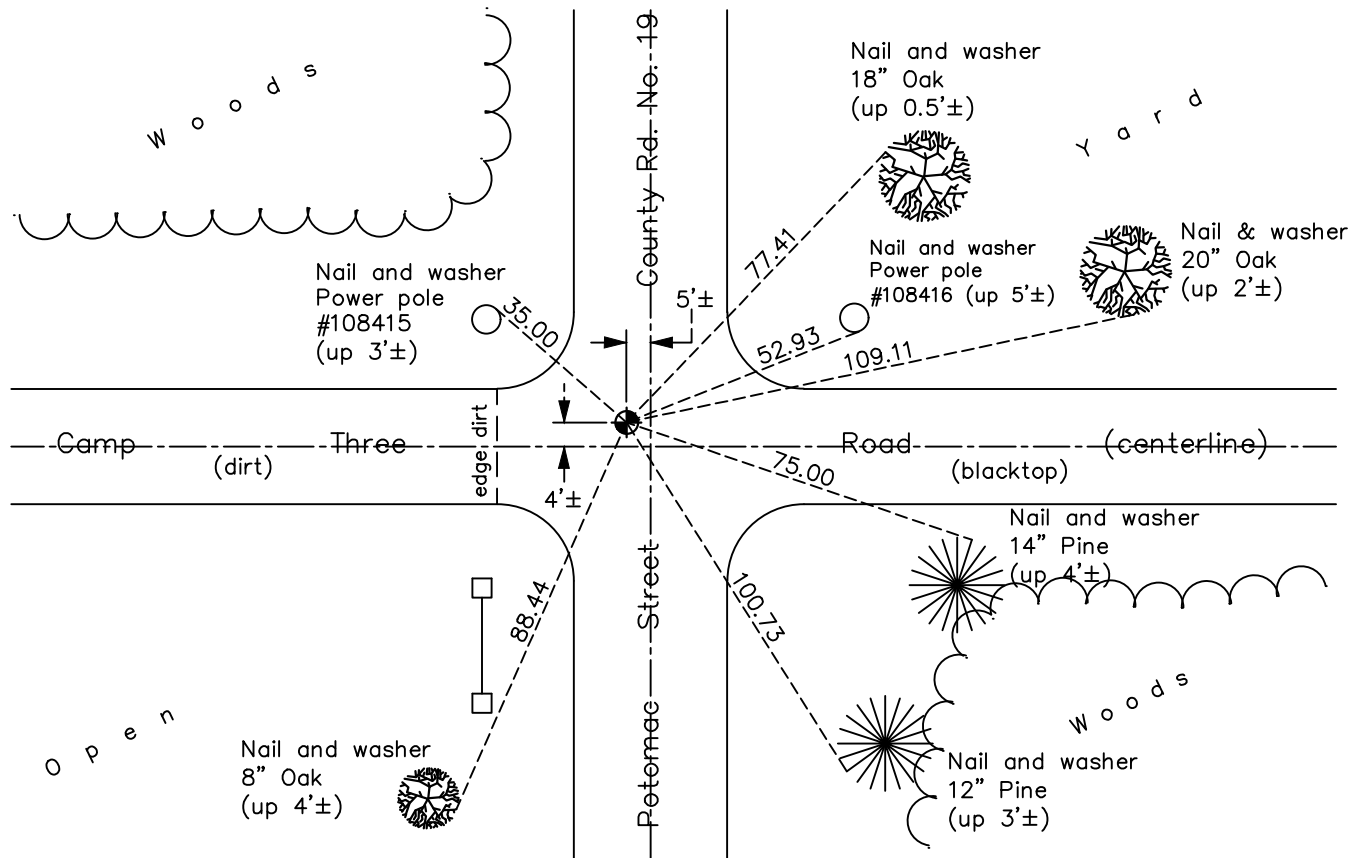
Southwest Corner of Sec. 15 Township 32 Range 22

On the 13th day of August, 1964, the described corner was evidenced by an iron pipe

and to perpetuate the location of said corner, at the exact location thereof, a permanent marker was placed consisting of a cast iron monument

AND on the 7th day of June, 2022, said permanent marker was found flush and the ties were updated

Updated reference ties are as shown below.



Revision Date
11/29/2022

N.A.D. 1983 Coordinates
 (1996 Adjustment)

County Project Coordinates	
Northing	<u>179979.3955</u>
Easting	<u>547881.0832</u>
Date	<u>6/17/03</u>

I hereby certify that this United States public land survey monument record is correct and complete to the best of my knowledge and belief.

David Zieglmeier Date 12/8/23

David Zieglmeier Anoka County Surveyor
 Minnesota License Number 46179

HISTORY OF GOVERNMENT CORNER

Page No. 71

County of Anoka

State of Minnesota

Southwest Corner of Sec. 15 Township 32 Range 22

CORNER HISTORY:

August 13, 1964 - Found 1/2" iron pipe flush using Jim Kurth ties. Updated ties.

September 8, 1969 - Found 1/2" iron pipe and replaced with a cast iron monument. Updated ties.

June 6, 1973 - Found cast iron monument and updated ties.

1976 - Found cast iron monument and updated ties.

August 1, 1979 - Found cast iron monument and updated ties.

August 10, 1989 - Found cast iron monument and updated ties.

August 11, 1995 - Found cast iron monument and updated ties.

June 13, 1997 - Found cast iron monument and updated ties prior to road construction.

August 26, 1997 - Set cast iron monument after road construction. Updated ties.

June 17, 2003 - Established NAD 1983 (1996 adj.) Anoka County project coordinates by static GPS methods.

November 13, 2007 - Found cast iron monument and updated ties.

September 26, 2014 - Found cast iron monument. Verified position by VRS GPS methods. Updated ties.

August 7, 2019 - Found cast iron monument. Verified position by VRS GPS methods. Updated ties.

June 7th, 2022 - Found cast iron monument. Verified position by VRS GPS method. Updated ties.